



Chipsmall Limited consists of a professional team with an average of over 10 year of expertise in the distribution of electronic components. Based in Hongkong, we have already established firm and mutual-benefit business relationships with customers from,Europe,America and south Asia,supplying obsolete and hard-to-find components to meet their specific needs.

With the principle of "Quality Parts,Customers Priority,Honest Operation,and Considerate Service",our business mainly focus on the distribution of electronic components. Line cards we deal with include Microchip,ALPS,ROHM,Xilinx,Pulse,ON,Everlight and Freescale. Main products comprise IC,Modules,Potentiometer,IC Socket,Relay,Connector.Our parts cover such applications as commercial,industrial, and automotives areas.

We are looking forward to setting up business relationship with you and hope to provide you with the best service and solution. Let us make a better world for our industry!



## Contact us

Tel: +86-755-8981 8866 Fax: +86-755-8427 6832

Email & Skype: info@chipsmall.com Web: www.chipsmall.com

Address: A1208, Overseas Decoration Building, #122 Zhenhua RD., Futian, Shenzhen, China



PART NUMBER	LED COLOR				LED SPEC. CHART.
	POSITION 1	POSITION 2	POSITION 3	POSITION 4	
569-0101-111	RED	RED	RED	RED	1
569-0101-212	RED	GREEN	RED	GREEN	1
569-0101-232	RED	GREEN	YELLOW	GREEN	1
569-0101-237	RED	GREEN	YELLOW	ORANGE	1
569-0101-732	RED	ORANGE	YELLOW	GREEN	1
569-0102-222	GREEN	GREEN	GREEN	GREEN	1
569-0102-232	GREEN	GREEN	YELLOW	GREEN	1
569-0102-233	GREEN	GREEN	YELLOW	YELLOW	1
569-0102-237	GREEN	GREEN	YELLOW	ORANGE	1
569-0103-222	YELLOW	GREEN	GREEN	GREEN	1
569-0103-237	YELLOW	GREEN	YELLOW	ORANGE	1
569-0103-323	GREEN	YELLOW	GREEN	YELLOW	1
569-0103-333	YELLOW	YELLOW	YELLOW	YELLOW	1
569-0107-777	ORANGE	ORANGE	ORANGE	ORANGE	1
*569-0109-999	BLUE	BLUE	BLUE	BLUE	1
569-0201-111	RED	RED	RED	RED	2
569-0202-222	GREEN	GREEN	GREEN	GREEN	2
569-0202-233	GREEN	GREEN	YELLOW	YELLOW	2
569-0203-333	YELLOW	YELLOW	YELLOW	YELLOW	2
569-0301-111	RED	RED	RED	RED	3
569-0302-222	GREEN	GREEN	GREEN	GREEN	3
569-0302-233	GREEN	GREEN	YELLOW	YELLOW	3
569-0303-333	YELLOW	YELLOW	YELLOW	YELLOW	3
569-0701-111	RED/GREEN	RED/GREEN	RED/GREEN	RED/GREEN	4
569-0701-144	RED/GREEN	RED/GREEN	YELLOW/GREEN	YELLOW/GREEN	4
569-0704-411	YELLOW/GREEN	YELLOW/GREEN	RED/GREEN	RED/GREEN	4
569-0704-444	YELLOW/GREEN	YELLOW/GREEN	YELLOW/GREEN	YELLOW/GREEN	4

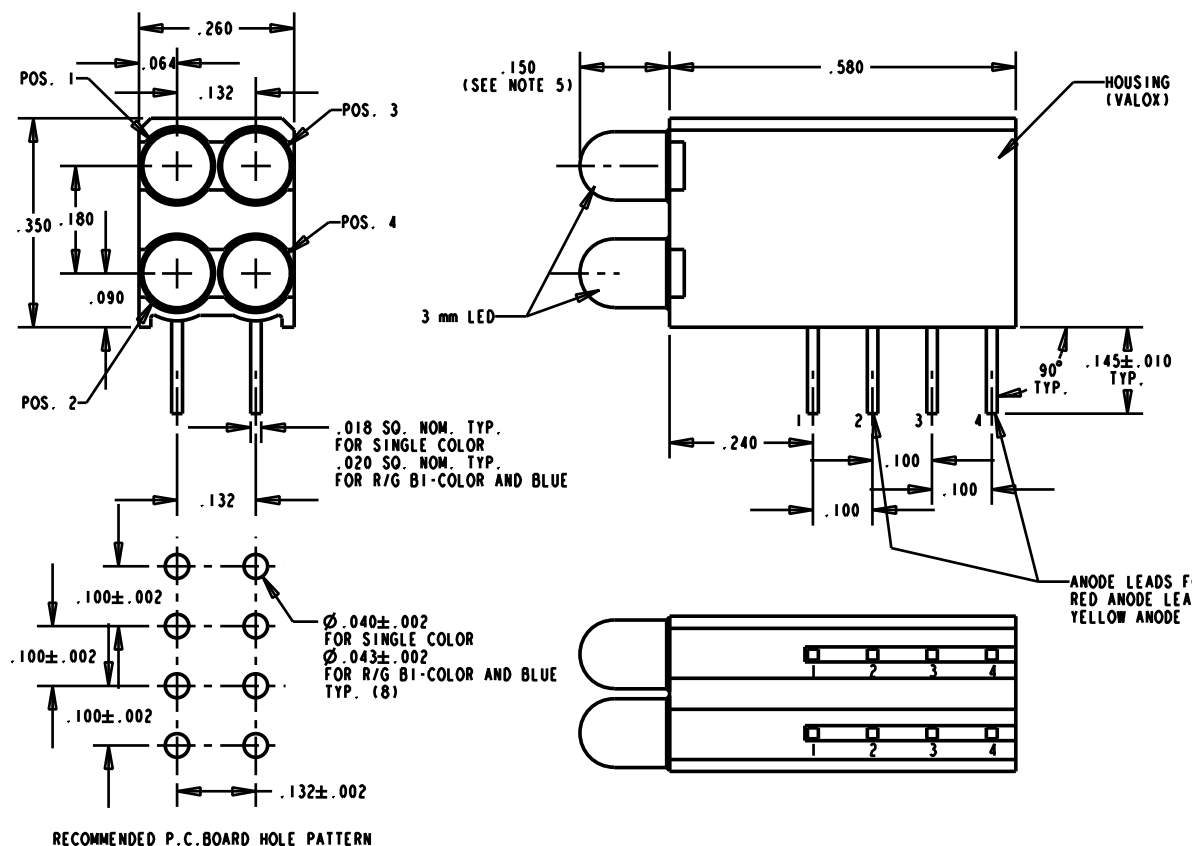
OPERATING CHARACTERISTICS AT 25°C AMBIENT						
CHARACTERISTICS	COLOR	MIN	TYP	MAX	UNITS	TEST CONDITIONS
LUMINOUS INTENSITY	RED	7.4	10.0		mcd	I <sub>r</sub> = 10 mA
	YELLOW	7.4	10.0			
	GREEN	4.7	12.6			
	ORANGE	3.4	7.0			
	BLUE	7.1	12.5	18.0		
FORWARD VOLTAGE	RED		2.0	2.8	V	I <sub>r</sub> = 20 mA
	YELLOW		2.1	2.8		
	GREEN		2.1	2.8		
	ORANGE	1.5	2.2	3.0		
REVERSE VOLTAGE	RED	5			V	I <sub>r</sub> = 10 mA
	YELLOW	5				
	GREEN	5				
	ORANGE	5				
PEAK WAVELENGTH	RED		635		nm	MEASURED AT PEAK
	YELLOW		585			
	GREEN		565			
	ORANGE		600			
	BLUE		428			
VIEWING ANGLE 2° 1/2	RED		60		DEG.	
	YELLOW		60			
	GREEN		60			
	ORANGE		60			
	BLUE		70			



CHART 1

SEE NOTE 4

- NOTE:
- LED LEAD SPACING MEASURED AT HOUSING EXIT.
  - PIN NUMBERS FOR REFERENCE ONLY, DESIGNATION NON-EXISTENT ON PARTS.
  - DIALIGHT PART NUMBER: 569-0101-111, 569-0102-222, 569-0103-333, 569-0107-777
  - ATTENTION: OBSERVE PRECAUTIONS FOR HANDLING ELECTROSTATIC SENSITIVE DEVICES.
  - P/N: 569-0109-999: DIMENSION FOR LED PROTRUSION FROM HOUSING IS .156.



OPERATING CHARACTERISTICS AT 25°C AMBIENT						
CHARACTERISTICS	COLOR	MIN	TYP	MAX	UNITS	TEST CONDITIONS
LUMINOUS INTENSITY	RED	1.0	1.6		mcd	I <sub>r</sub> = 2 mA
	YELLOW	1.0	1.6			
	GREEN	1.0	1.6			
FORWARD VOLTAGE	RED		1.7	2.2	V	I <sub>r</sub> = 2 mA
	YELLOW		1.8	2.2		
REVERSE VOLTAGE	RED	5			V	I <sub>r</sub> = 10 μA
	YELLOW	5				
	GREEN	5				
PEAK WAVELENGTH	RED		635		nm	MEASURED AT PEAK
	YELLOW		583			
	GREEN		565			
VIEWING ANGLE 2° 1/2	RED		60		DEG.	
	YELLOW		60			
	GREEN		60			



CHART 2

OPERATING CHARACTERISTICS AT 25°C AMBIENT						
CHARACTERISTICS	COLOR	MIN	TYP	MAX	UNITS	TEST CONDITIONS
LUMINOUS INTENSITY	RED	8.7	29.0		mcd	V <sub>r</sub> = 5 V
	YELLOW	3.7	12.6			
	GREEN	5.6	19.0			
FORWARD VOLTAGE	RED		10.0	15.0	V	V <sub>r</sub> = 5 V
	YELLOW		10.0	15.0		
	GREEN		12.0	15.0		
REVERSE VOLTAGE	RED	5			V	I <sub>r</sub> = 100 μA
	YELLOW	5				
	GREEN	5				
PEAK WAVELENGTH	RED		635		nm	MEASURED AT PEAK
	YELLOW		585			
	GREEN		565			
VIEWING ANGLE 2° 1/2	RED		60		DEG.	
	YELLOW		60			
	GREEN		60			



CHART 3  
INTEGRAL RESISTOR, 5V LED

YELLOW/GREEN BI-COLOR LEDS						
OPERATING CHARACTERISTICS AT 25°C AMBIENT						
CHARACTERISTICS	COLOR	MIN	TYP	MAX	UNITS	TEST CONDITIONS
LUMINOUS INTENSITY	YELLOW	2.5	4.3		mcd	I <sub>r</sub> = 10 mA
	GREEN	2.5	6.3			
FORWARD VOLTAGE	YELLOW		2.1	2.8	V	I <sub>r</sub> = 20 mA
	GREEN		2.1	2.8		
PEAK WAVELENGTH	YELLOW		635		nm	MEASURED AT PEAK
	GREEN		565			
VIEWING ANGLE 2° 1/2	RED		80		DEG.	
	YELLOW		80			
	GREEN		80			

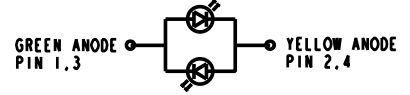
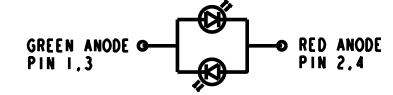


CHART 4

RED/GREEN BI-COLOR LEDS						
OPERATING CHARACTERISTICS AT 25°C AMBIENT						
CHARACTERISTICS	COLOR	MIN	TYP	MAX	UNITS	TEST CONDITIONS
LUMINOUS INTENSITY	RED	1.7	4.7		mcd	I <sub>r</sub> = 20 mA
	GREEN	3.7	10.0			
FORWARD VOLTAGE	RED		2.0	2.8	V	I <sub>r</sub> = 20 mA
	GREEN		2.1	2.8		
PEAK WAVELENGTH	RED		635		nm	MEASURED AT PEAK
	GREEN		565			
REVERSE VOLTAGE	RED	5			V	I <sub>r</sub> = 100 μA
	GREEN	5				
VIEWING ANGLE 2° 1/2	RED		60		DEG.	
	GREEN		60			



THIS DRAWING AND THE CONTENTS HEREIN ARE CONFIDENTIAL AND THE SOLE PROPERTY OF DIALIGHT. REPRODUCTION OF THIS DRAWING OR CONSTRUCTION OF ANY PARTS WITHIN THIS DRAWING ARE FORBIDDEN WITHOUT THE WRITTEN CONSENT OF DIALIGHT.

SCALE 5:1

ALL DIM'S IN: INCHES

TOLERANCES: UNLESS OTHERWISE SPECIFIED

FRACTIONS: ±1/64

DECIMALS (1.XX): ±.02

DECIMALS (1.XXX): ±.015

ANGLES: ±1°

FINISH:

FSCN 83330

DRAWING NUMBER: C-16022

REV: F

TITLE: BI-LEVEL CBI

MATERIAL:

Dialight

1501 ROUTE 34 SOUTH FARMINGDALE, NJ 07727

SHEET OF FAMILY TABLES: