



Chipsmall Limited consists of a professional team with an average of over 10 year of expertise in the distribution of electronic components. Based in Hongkong, we have already established firm and mutual-benefit business relationships with customers from,Europe,America and south Asia,supplying obsolete and hard-to-find components to meet their specific needs.

With the principle of “Quality Parts,Customers Priority,Honest Operation,and Considerate Service”,our business mainly focus on the distribution of electronic components. Line cards we deal with include Microchip,ALPS,ROHM,Xilinx,Pulse,ON,Everlight and Freescale. Main products comprise IC,Modules,Potentiometer,IC Socket,Relay,Connector.Our parts cover such applications as commercial,industrial, and automotives areas.

We are looking forward to setting up business relationship with you and hope to provide you with the best service and solution. Let us make a better world for our industry!



## Contact us

Tel: +86-755-8981 8866 Fax: +86-755-8427 6832

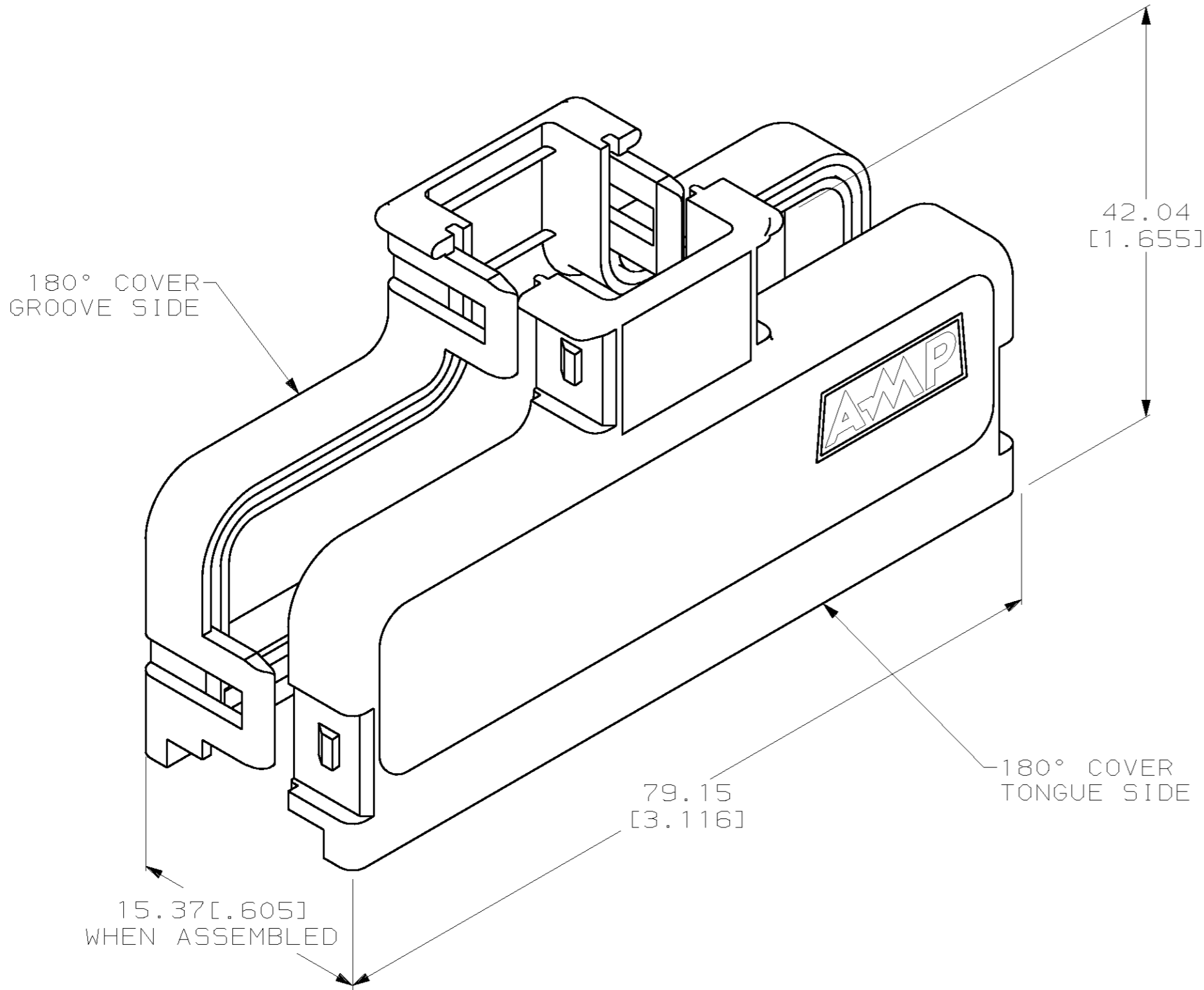
Email & Skype: [info@chipsmall.com](mailto:info@chipsmall.com) Web: [www.chipsmall.com](http://www.chipsmall.com)

Address: A1208, Overseas Decoration Building, #122 Zhenhua RD., Futian, Shenzhen, China






LOC	DIST	REVISIONS				
AA	20	P	LTR	DESCRIPTION	DATE	DWN
		C		OBSOLETE	21JAN03	DLD

1. DIMENSIONS ARE MAXIMUM UNLESS OTHERWISE SPECIFIED.
2. KIT SHIPPED NOT ASSEMBLED.
3. MATERIAL: POLYPHENYLENE OXIDE, BLACK.
4. CABLE RANGE: Ø14.22-15.37 [.560-.605].
5. 100 KITS BULK PACKAGED.



569025-1

PART NUMBER

THIS DRAWING IS A CONTROLLED DOCUMENT.		DWN L. SMITH 05-DEC-94		<b>AMP</b> AMP Incorporated Harrisburg, PA 17105-3608	
DIMENSIONS: mm [INCHES]		CHK C. WHITT 07-DEC-94			
	TOLERANCES UNLESS OTHERWISE SPECIFIED:	APVD J. TRAMMEL 14-DEC-94		NAME  COVER KIT, 180 DEGREE, 64 POSITION, CHAMP	
	0 PLC ±-	PRODUCT SPEC			
	1 PLC ±-	-			
	2 PLC ±-	APPLICATION SPEC			
	3 PLC ±-	-		SIZE	
	4 PLC ±-	-		CAGE CODE	
	ANGLES ±-	WEIGHT		DRAWING NO	
	MATERIAL	FINISH	-		RESTRICTED TO
	-	CUSTOMER DRAWING		A2 00779 C-569025	
				SCALE 2:1	
				SHEET 1 OF 1	
				REV C	