



Chipsmall Limited consists of a professional team with an average of over 10 year of expertise in the distribution of electronic components. Based in Hongkong, we have already established firm and mutual-benefit business relationships with customers from,Europe,America and south Asia,supplying obsolete and hard-to-find components to meet their specific needs.

With the principle of “Quality Parts,Customers Priority,Honest Operation,and Considerate Service”,our business mainly focus on the distribution of electronic components. Line cards we deal with include Microchip,ALPS,ROHM,Xilinx,Pulse,ON,Everlight and Freescale. Main products comprise IC,Modules,Potentiometer,IC Socket,Relay,Connector.Our parts cover such applications as commercial,industrial, and automotives areas.

We are looking forward to setting up business relationship with you and hope to provide you with the best service and solution. Let us make a better world for our industry!



Contact us

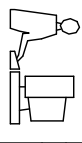
Tel: +86-755-8981 8866 Fax: +86-755-8427 6832

Email & Skype: info@chipsmall.com Web: www.chipsmall.com

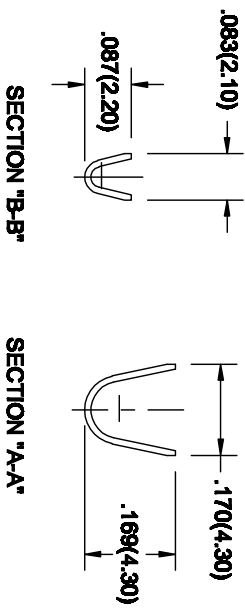
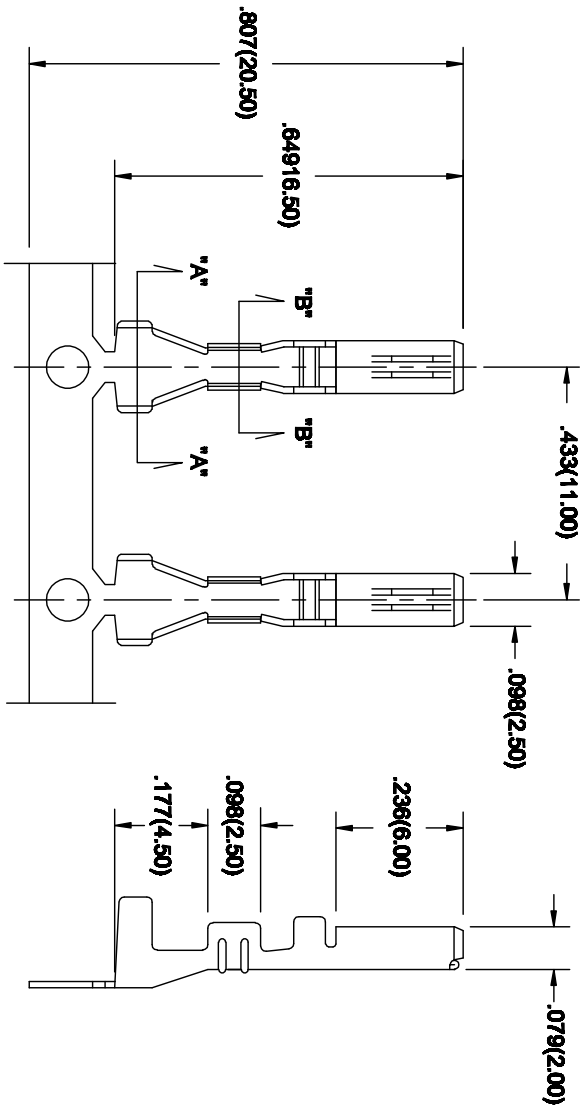
Address: A1208, Overseas Decoration Building, #122 Zhenhua RD., Futian, Shenzhen, China



THIS IS A C.A.D. GENERATED DRAWING
DO NOT MAKE MANUAL REVISIONS TO MASTER
ALL TOLERANCES UNLESS OTHERWISE SPECIFIED 2/98




ISSUE NUMBER
ORIGINAL
. 1



MATERIAL: BRASS, TIN PLATED

PART NUMBER 570-290-721 WILL BE IN REEL 4,000 PCS
PART NUMBER 570-290-721P60 WILL BE IN STRIP 40 PCS

570 SERIES FEMALE CRIMP CONTACT
WIRE RANGE AWG 22 TO 20

 EDAC INC TORONTO, ONTARIO CANADA YOUR CONNECTION TO QUALITY & SERVICE		THESE DRAWINGS AND SPECIFICATIONS ARE THE PROPERTY OF EDAC INC. AND SHALL NOT BE REPRODUCED, COPIED, MANIPULATED OR SAID FOR REPRODUCTION WITHOUT WRITTEN PERMISSION.	
ACAD REF DWG NUMBER 570-290-721		DRAWING NUMBER 570-290-721	
DRAWN: F.BRONES DATE: JUN. 01/14		ISSUE 1	
CHECKED: DATE:		PART NUMBER 570-290-721	