

Chipsmall Limited consists of a professional team with an average of over 10 year of expertise in the distribution of electronic components. Based in Hongkong, we have already established firm and mutual-benefit business relationships with customers from,Europe,America and south Asia,supplying obsolete and hard-to-find components to meet their specific needs.

With the principle of “Quality Parts,Customers Priority,Honest Operation,and Considerate Service”,our business mainly focus on the distribution of electronic components. Line cards we deal with include Microchip,ALPS,ROHM,Xilinx,Pulse,ON,Everlight and Freescale. Main products comprise IC,Modules,Potentiometer,IC Socket,Relay,Connector.Our parts cover such applications as commercial,industrial, and automotives areas.

We are looking forward to setting up business relationship with you and hope to provide you with the best service and solution. Let us make a better world for our industry!



## Contact us

Tel: +86-755-8981 8866 Fax: +86-755-8427 6832

Email & Skype: [info@chipsmall.com](mailto:info@chipsmall.com) Web: [www.chipsmall.com](http://www.chipsmall.com)

Address: A1208, Overseas Decoration Building, #122 Zhenhua RD., Futian, Shenzhen, China

IEC Appliance Inlet C14 or C18 with Filter, Protection Degree IP65 into the Appliance, Fuseholder 1- or 2-pole, Front or Rear Mounting



5707.xxxx.xx2 Mounting from front side



5707.xxxx.xxx.22 with IP 54 V-Lock cord connection



5707 with IP 54 Inlet Gasket



### Approvals and Compliances

#### Description

- Panel Mount :  
Screw-on version from front or rear side , Screws with sealing are included
- 4 Functions :  
Appliance Inlet protection class I or II , Line filter in standard and medical version , Fuseholder for fuse-links 5 x 20 mm , IP 65 protection into the appliance
- For front side mounting versions a sealing kit IP 54 for the power supply connection is available as an accessory: 4700.0021
- Option suffix ".22" offers IP 54 for the power input in combination with V-Lock cordsets
- Quick connect terminals 6.3 x 0.8 mm

#### Unique Selling Proposition

- Sealed power entry module
- Strong in Design and Safety
- IP 65 protection to the appliance
- IP 54 protection to the cord connection

#### Characteristics

- Extreme robust design
- All single elements are already wired
- Screw type fuse carrier, slotted
- With EMC-shield
- Especially for applications in rough environments (see technical data)
- Suitable for use in equipment according to IEC/UL 60950  
Suitable for use in medical equipment according to IEC/UL 60601-1

#### Other versions on request

- With solder terminals
- Class X1- and Y1-capacitors for enhanced withstand voltage
- Medical version M80
- Additional factory-mounted sealing (IP54) of power input
- Version with current rating 3 A

#### Weblinks

[pdf datasheet](#), [html-datasheet](#), [General Product Information](#), [Distributor-Stock-Check](#), [Accessories](#), [Detailed request for product](#), [Microsite](#)

Newly available variants corresponding to V-Lock mating cordset. The connector is equipped with a notch intended for use with the latching cordset. The cord latching system prevents against accidental removal of the cordset.

#### Technical Data

|                                 |  |                                   |  |
|---------------------------------|--|-----------------------------------|--|
| Ratings IEC                     | 1 - 8A @ Ta 40 °C / 250VAC; 50Hz   | appliance inlet/-outlet           | C14 / C18 acc. to IEC 60320-1  |
| Ratings UL/CSA                  | 1 - 8A @ Ta 40 °C / 125VAC; 60Hz   |                                   | UL 498, CSA C22.2 no. 42 (for cold conditions) pin-temperature 70 °C, 8A, Protection Class I or II     |
| Leakage Current                 | standard < 0.5mA (250 V / 60Hz)<br>medical < 5 µA (250 V / 60 Hz)                          |                                   |  |
| Dielectric Strength             | > 1.7kVDC between L-N<br>> 2.7kVDC between L/N-PE<br>Test voltage (2sec)                   | Fuseholder                        | 1 or 2 pole, Shocksafe category PC2 acc. to IEC 60127-6,<br>for fuse-links 5 x 20mm                    |
| Allowable Operation Temperature | -25 °C to 85 °C  | Rated Power Acceptance @ Ta 23 °C | 5 x 20: 1.6W 1-pole/ 1,2W 2-pole per pole  |
| Climatic Category               | 25/085/21 acc. to IEC 60068-1  | Power Acceptance @ Ta > 23°C      | Admissible power acceptance at higher ambient temperature see derating curves                          |
| IP-Protection                   | from front side IP 65 acc. to IEC 60529<br>from rear-side IP 65 acc. to IEC 60529          | Line Filter                       | Standard and Medical Version, IEC 60939, UL 1283, CSA C22.2 no. 8<br><a href="#">Technical Details</a> |
| Protection Class                | Suitable for appliances with protection class I or II acc. to IEC 61140                    | MTBF                              | > 2'800'000h acc. to MIL-HB-217 F  |
| Terminal                        | Quick connect terminals 6.3 x 0.8 mm   |                                   |  |
| Panel Thickness S               | Screw, max 3mm<br>Mounting screw torque max 0.8Nm<br>2 screws M3 with sealing are provided |                                   |  |
| Material: Housing               | black / white / metallic, UL 94V-0   |                                   |  |



### Approvals and Compliances

Detailed information on product approvals, code requirements, usage instructions and detailed test conditions can be looked up in [Details about Approvals](#)

## Approvals









The approval mark is used by the testing authorities to certify compliance with the safety requirements placed on electronic products.

Approval Reference Type: 5707

| Approval Logo  | Certificates  | Certification Body | Description                  |
|--|---------------|--------------------|------------------------------|
|  | VDE Approvals | VDE                | Certificate Number: 40016382 |
|  | UL Approvals  | UL                 | UL File Number: E72928       |




## Product standards

Product standards that are referenced

| Organization   | Design                | Standard         | Description   |
|--|-----------------------|------------------|---|
|  | Designed according to | IEC 60320-1      | Appliance couplers for household and similar general purposes         |
|  | Designed according to | IEC 60939        | Passive filters for suppressing electromagnetic interference          |
|  | Designed according to | IEC 60127-6      | Miniature fuses. Part 6. Fuse-holders for miniature fuse-links        |
|  | Designed according to | IEC 61058-1      | Switches for appliances. Part 1. General requirements                 |
|  | Designed according to | UL 498           | Standard for Attachment Plugs and Receptacles                         |
|  | Designed according to | UL 1283          | Electromagnetic interference filters                                  |
|  | Designed according to | CSA C22.2 no. 42 | General Use Receptacles, Attachment Plugs, and Similar Wiring Devices |
|  | Designed according to | CSA C22.2 no. 8  | Electromagnetic interference (EMI) filters                            |







## Application standards

Application standards where the product can be used

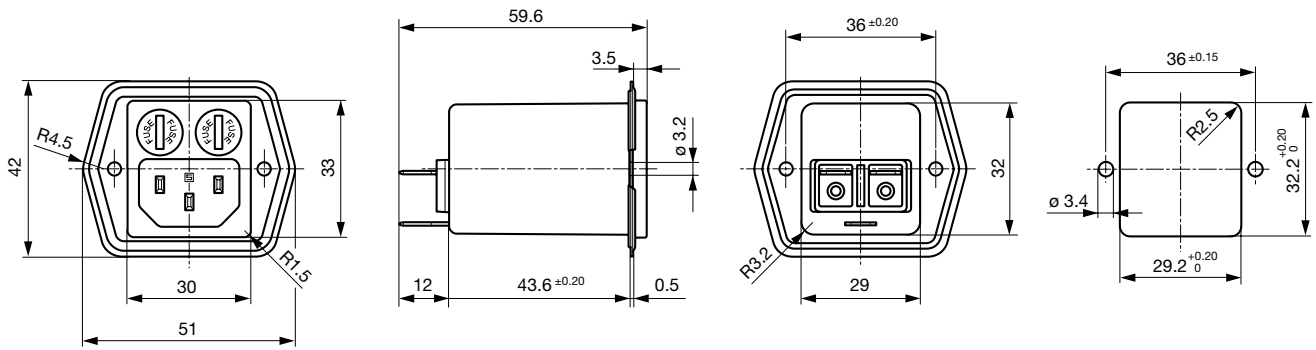
| Organization   | Design                         | Standard     | Description   |
|--|--------------------------------|--------------|---|
|  | Designed for applications acc. | IEC/UL 60950 | IEC 60950-1 includes the basic requirements for the safety of information technology equipment.   |
|  | Designed for applications acc. | IEC 60601-1  | Medical electrical equipment - Part 1: General requirements for basic safety and essential performance  |
|  | Designed for applications acc. | IEC 60335-1  | Safety of electrical appliances for household and similar purposes. Meets the requirements for appliances in unattended use. This includes the enhanced requirements of glow wire tests acc. to IEC 60695-2-12 and -13. |

## Compliances

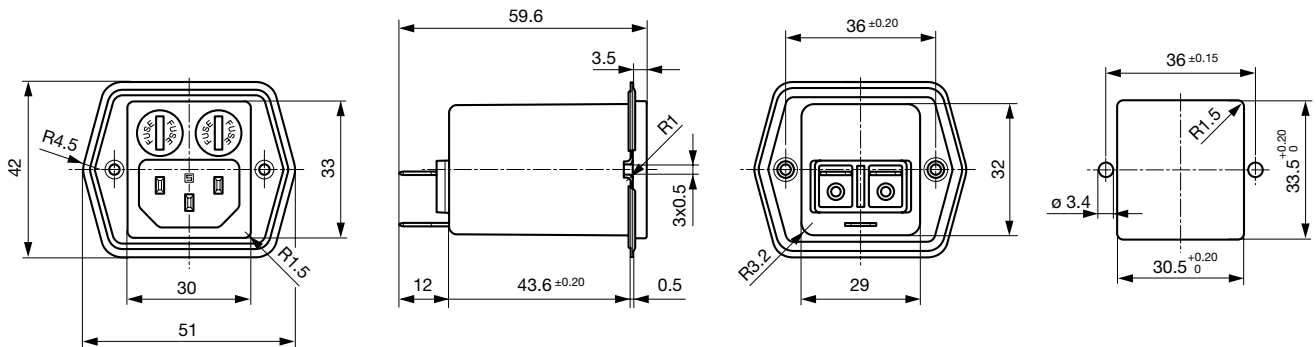
The product complies with following Guide Lines

| Identification   | Details                      | Initiator   | Description  |
|--|------------------------------|-------------|--|
|  | CE declaration of conformity | SCHURTER AG | The CE marking declares that the product complies with the applicable requirements laid down in the harmonisation of Community legislation on its affixing in accordance with EU Regulation 765/2008.                        |
|  | RoHS                         | SCHURTER AG | EU Directive RoHS 2011/65/EU   |
|  | China RoHS                   | SCHURTER AG | The law SJ / T 11363-2006 (China RoHS) has been in force since 1 March 2007. It is similar to the EU directive RoHS.   |
|  | REACH                        | SCHURTER AG | On 1 June 2007, Regulation (EC) No 1907/2006 on the Registration, Evaluation, Authorization and Restriction of Chemicals 1 (abbreviated as "REACH") entered into force.  |
|  | MicrositeV-Lock              | SCHURTER AG | V-Lock system are based on a matching plug-dose combination. The connector is equipped with a notch intended for use with the latching cordset. The cord latching system prevents against accidental removal of the cordset. |
|  | Medical Equipment            | SCHURTER AG | Suitable for use in medical equipment according to IEC/UL 60601-1  |

**Dimension [mm]**  
 Mounting from front side



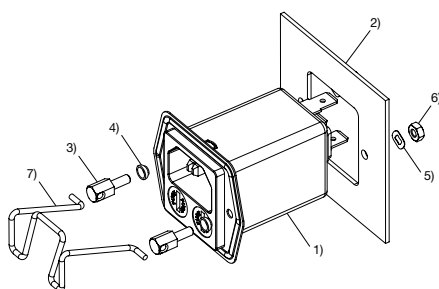
Mounting from rear side



**Assembly Instructions**

Mounting sealing kit IP 54 for the power supply (only for frontside mounting)

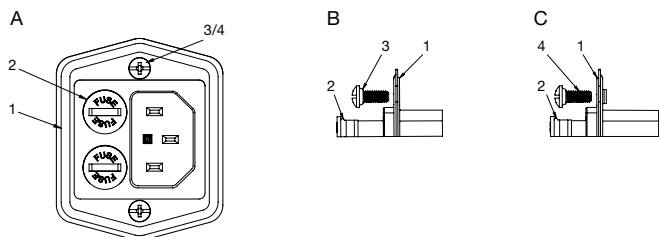
Mating cordsets to sealing kit



- 1) Power entry module with factory-mounted inlet gasket
- 2) Chassis
- 3) Pillar
- 4) Gasket ring
- 5) Crinkle washer
- 6) Nut
- 7) Retaining clip

| Part no   | Country plug   | Cable length | Cross section          | Color |
|-----------|----------------|--------------|------------------------|-------|
| 6000.0214 | open end       | 2.0 m        | 3x1 mm <sup>2</sup>    | black |
| 6003.0215 | EURO plug      | 2.5 m        | 3x1 mm <sup>2</sup>    | black |
| 6004.0215 | EURO plug      | 2.5 m        | 3x1 mm <sup>2</sup>    | black |
| 6007.0212 | EURO plug      | 1.0 m        | 3x1 mm <sup>2</sup>    | black |
| 6007.0214 | IEC plug       | 2.0 m        | 3x1 mm <sup>2</sup>    | black |
| 6004.0114 | EURO plug      | 2.0 m        | 3x0.75 mm <sup>2</sup> | black |
| 6026.0215 | Italy          | 2.5 m        | 3x1 mm <sup>2</sup>    | black |
| 6009.1315 | North America  | 2.5 m        | 3x18 AWG               | black |
| 6047.6414 | Japan          | 2.0 m        | 3x0.75 mm <sup>2</sup> | black |
| 6009.1214 | North America  | 2.0 m        | 3x18 AWG               | black |
| 6011.0215 | Switzerland    | 2.5 m        | 3x1 mm <sup>2</sup>    | black |
| 6044.0215 | United Kingdom | 2.5 m        | 3x1 mm <sup>2</sup>    | black |

Mounting standard version



A) front view  
 B) detail front mounting type  
 C) detail rear mounting type

- 1) sealing of flange
- 2) sealing of fuseholder
- 3) sealing of screw hole (front mounting type: sealing ring on screw head)
- 4) sealing of screw hole (rear mounting type: sealing on screw thread)

Important:

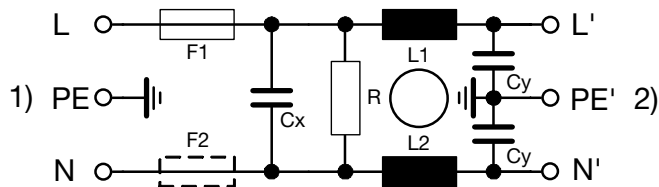
- use supplied fuse caps (2) and mounting screws (3/4)
- optimal sealing requires even and solid panel opening
- recommended tightening torque for mounting screws (2/3/4): 0.5-0.8 Nm
- IP65 protection between the inlet and connector pins, but no IP rating between the connector pins and the plug of the power cord!

Technical Data of Filter-Components

| Rated Current [A] | Filter-Type           | Inductances L [mH] | Capacitance CX [nF] | Capacitance CY [nF] | R [MΩ] |
|-------------------|-----------------------|--------------------|---------------------|---------------------|--------|
| 1                 | Standard Version      | 2 x 12             | 100                 | 2.2                 | 1      |
| 2                 | Standard Version      | 2 x 5.2            | 100                 | 2.2                 | 1      |
| 4                 | Standard Version      | 2 x 2              | 100                 | 2.2                 | 1      |
| 6                 | Standard Version      | 2 x 0.8            | 100                 | 2.2                 | 1      |
| 8                 | Standard Version      | 2 x 0.4            | 100                 | 2.2                 | 1      |
| 1                 | Medical Version (M5)  | 2 x 12             | 100                 | -                   | 1      |
| 2                 | Medical Version (M5)  | 2 x 5.2            | 100                 | -                   | 1      |
| 4                 | Medical Version (M5)  | 2 x 2              | 100                 | -                   | 1      |
| 6                 | Medical Version (M5)  | 2 x 0.8            | 100                 | -                   | 1      |
| 8                 | Medical Version (M5)  | 2 x 0.4            | 100                 | -                   | 1      |
| 2                 | Medical Version (M80) | 2 x 5.2            | 100                 | 0.47                | 1      |

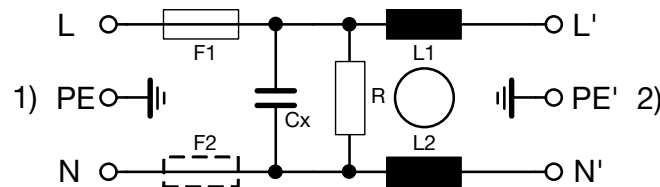
Diagrams

Standard version



1) Line  
 2) Load

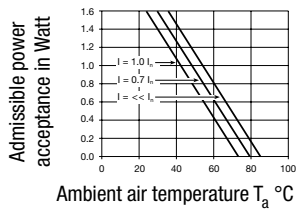
Medical version M5



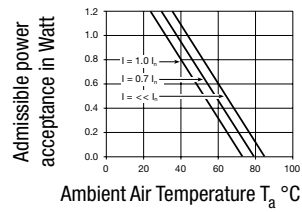
1) Line  
 2) Load

**Derating Curves**

1-pole



2-pole

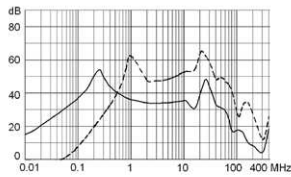


**Attenuation Loss**

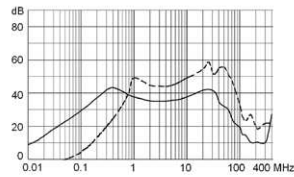
- - - 50Ω differential mode    \_\_\_\_ 50Ω common mode

Standard version

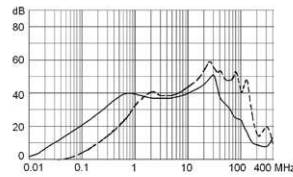
1 A



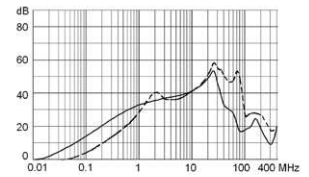
2 A



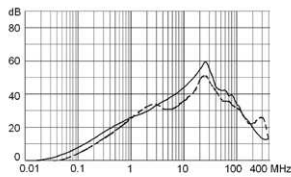
4 A



6 A

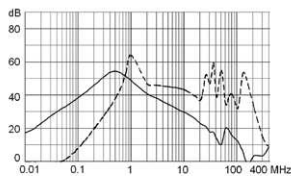


8 A

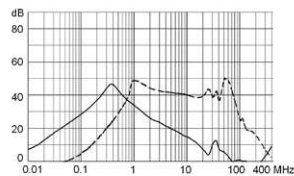


Medical version (M5)

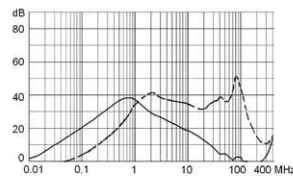
1 A



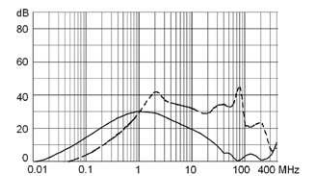
2 A



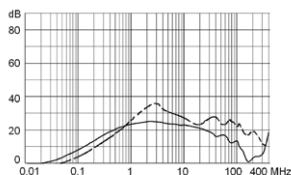
4 A



6 A



8 A



**All Variants**

| Rated Current [A] | Filter-Type      | Mounting side | Cord retaining kits | Protection Class | Power Cord IP-protection | Fuseholder | Color | V-Lock | Order Number  |
|-------------------|------------------|---------------|---------------------|------------------|--------------------------|------------|-------|--------|---------------|
| 1                 | Standard Version | Front Side    | -                   | I                | -                        | 1-pole     | black |        | 5707.0101.112 |
| 1                 | Standard Version | Rear Side     | -                   | I                | -                        | 1-pole     | black |        | 5707.0101.113 |
| 2                 | Standard Version | Front Side    | -                   | I                | -                        | 1-pole     | black |        | 5707.0201.112 |

| Rated Current [A] | Filter-Type          | Mounting side | Cord retaining kits | Protection Class | Power Cord IP-protection | Fuseholder | Color | V-Lock | Order Number     |
|-------------------|----------------------|---------------|---------------------|------------------|--------------------------|------------|-------|--------|------------------|
| 2                 | Standard Version     | Rear Side     | -                   | I                | -                        | 1-pole     | black |        | 5707.0201.113    |
| 4                 | Standard Version     | Front Side    | -                   | I                | -                        | 1-pole     | black |        | 5707.0401.112    |
| 4                 | Standard Version     | Rear Side     | -                   | I                | -                        | 1-pole     | black |        | 5707.0401.113    |
| 6                 | Standard Version     | Front Side    | -                   | I                | -                        | 1-pole     | black |        | 5707.0601.112    |
| 6                 | Standard Version     | Rear Side     | -                   | I                | -                        | 1-pole     | black |        | 5707.0601.113    |
| 8                 | Standard Version     | Front Side    | -                   | I                | -                        | 1-pole     | black |        | 5707.0801.112    |
| 8                 | Standard Version     | Rear Side     | -                   | I                | -                        | 1-pole     | black |        | 5707.0801.113    |
| 1                 | Standard Version     | Front Side    | -                   | I                | -                        | 2-pole     | black |        | 5707.0101.312    |
| 1                 | Standard Version     | Rear Side     | -                   | I                | -                        | 2-pole     | black |        | 5707.0101.313    |
| 2                 | Standard Version     | Front Side    | -                   | I                | -                        | 2-pole     | black |        | 5707.0201.312    |
| 2                 | Standard Version     | Rear Side     | -                   | I                | -                        | 2-pole     | black |        | 5707.0201.313    |
| 4                 | Standard Version     | Front Side    | -                   | I                | -                        | 2-pole     | black |        | 5707.0401.312    |
| 4                 | Standard Version     | Rear Side     | -                   | I                | -                        | 2-pole     | black |        | 5707.0401.313    |
| 4                 | Standard Version     | Rear Side     | -                   | I                | IP 54                    | 2-pole     | black | ●      | 5707.0401.313.22 |
| 6                 | Standard Version     | Front Side    | -                   | I                | -                        | 2-pole     | black |        | 5707.0601.312    |
| 6                 | Standard Version     | Rear Side     | -                   | I                | -                        | 2-pole     | black |        | 5707.0601.313    |
| 8                 | Standard Version     | Front Side    | -                   | I                | -                        | 2-pole     | black |        | 5707.0801.312    |
| 8                 | Standard Version     | Front Side    | -                   | I                | IP 54                    | 2-pole     | black |        | 5707.0801.312.01 |
| 8                 | Standard Version     | Rear Side     | -                   | I                | -                        | 2-pole     | black |        | 5707.0801.313    |
| 8                 | Standard Version     | Rear Side     | -                   | I                | -                        | 2-pole     | black | ●      | 5707.0801.313.21 |
| 1                 | Medical Version (M5) | Front Side    | -                   | I                | -                        | 2-pole     | black |        | 5707.0103.312    |
| 1                 | Medical Version (M5) | Rear Side     | -                   | I                | -                        | 2-pole     | black |        | 5707.0103.313    |
| 1                 | Medical Version (M5) | Rear Side     | -                   | I                | -                        | 2-pole     | black | ●      | 5707.0103.313.21 |
| 2                 | Medical Version (M5) | Front Side    | -                   | I                | -                        | 2-pole     | black |        | 5707.0203.312    |
| 2                 | Medical Version (M5) | Rear Side     | -                   | I                | -                        | 2-pole     | black |        | 5707.0203.313    |
| 2                 | Medical Version (M5) | Rear Side     | -                   | I                | -                        | 2-pole     | black | ●      | 5707.0203.313.21 |
| 4                 | Medical Version (M5) | Rear Side     | -                   | I                | IP 54                    | 2-pole     | black | ●      | 3-100-897        |
| 4                 | Medical Version (M5) | Front Side    | -                   | I                | -                        | 2-pole     | black |        | 5707.0403.312    |
| 4                 | Medical Version (M5) | Rear Side     | -                   | I                | -                        | 2-pole     | black |        | 5707.0403.313    |
| 4                 | Medical Version (M5) | Rear Side     | -                   | I                | -                        | 2-pole     | black | ●      | 5707.0403.313.21 |
| 6                 | Medical Version (M5) | Front Side    | -                   | I                | -                        | 2-pole     | black |        | 5707.0603.312    |
| 6                 | Medical Version (M5) | Rear Side     | -                   | I                | -                        | 2-pole     | black |        | 5707.0603.313    |
| 6                 | Medical Version (M5) | Rear Side     | -                   | I                | -                        | 2-pole     | black | ●      | 5707.0603.313.21 |
| 6                 | Medical Version (M5) | Front Side    | -                   | I                | -                        | 2-pole     | white |        | 5707.0613.312    |
| 6                 | Medical Version (M5) | Front Side    | -                   | I                | -                        | 2-pole     | white | ●      | 5707.0613.312.21 |
| 6                 | Medical Version (M5) | Rear Side     | -                   | I                | -                        | 2-pole     | white |        | 5707.0613.313    |
| 6                 | Medical Version (M5) | Rear Side     | -                   | I                | -                        | 2-pole     | white | ●      | 5707.0613.313.21 |
| 8                 | Medical Version (M5) | Front Side    | -                   | I                | -                        | 2-pole     | black |        | 5707.0803.312    |
| 8                 | Medical Version (M5) | Front Side    | -                   | I                | IP 54                    | 2-pole     | black | ●      | 5707.0803.312.22 |
| 8                 | Medical Version (M5) | Rear Side     | -                   | I                | -                        | 2-pole     | black |        | 5707.0803.313    |
| 8                 | Medical Version (M5) | Rear Side     | -                   | I                | -                        | 2-pole     | black | ●      | 5707.0803.313.21 |
| 1                 | Medical Version (M5) | Front Side    | -                   | II               | -                        | 2-pole     | black |        | 5707.0103.412    |
| 1                 | Medical Version (M5) | Rear Side     | -                   | II               | -                        | 2-pole     | black |        | 5707.0103.413    |
| 2                 | Medical Version (M5) | Front Side    | -                   | II               | -                        | 2-pole     | black |        | 5707.0203.412    |
| 2                 | Medical Version (M5) | Rear Side     | -                   | II               | -                        | 2-pole     | black |        | 5707.0203.413    |
| 4                 | Medical Version (M5) | Front Side    | -                   | II               | -                        | 2-pole     | black |        | 5707.0403.412    |
| 4                 | Medical Version (M5) | Rear Side     | -                   | II               | -                        | 2-pole     | black |        | 5707.0403.413    |

| Rated Current [A] | Filter-Type           | Mounting side | Cord retaining kits | Protection Class | Power Cord IP-protection | Fuseholder | Color | V-Lock | Order Number     |
|-------------------|-----------------------|---------------|---------------------|------------------|--------------------------|------------|-------|--------|------------------|
| 6                 | Medical Version (M5)  | Front Side    | -                   | II               | -                        | 2-pole     | black |        | 5707.0603.412    |
| 6                 | Medical Version (M5)  | Rear Side     | -                   | II               | -                        | 2-pole     | black |        | 5707.0603.413    |
| 8                 | Medical Version (M5)  | Front Side    | -                   | II               | -                        | 2-pole     | black |        | 5707.0803.412    |
| 8                 | Medical Version (M5)  | Rear Side     | -                   | II               | -                        | 2-pole     | black |        | 5707.0803.413    |
| 2                 | Medical Version (M80) | Front Side    | -                   | I                | IP 54                    | 2-pole     | black |        | 5707.0205.312.01 |

Most Popular.

Availability for all products can be searched real-time: <https://www.schurter.com/en/Stock-Check/Stock-Check-SCHURTER>

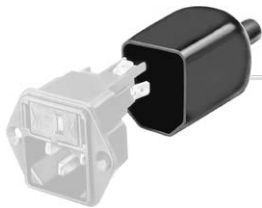
**Packaging unit** 10 Pcs

### Accessories

#### Description



**Wire Harness**  
 Wire harness for SCHURTER products



**Assorted Covers**  
 Rear Cover

0859.0047

### Mating Outlets/Connectors

#### Category / Description

##### Connector Overview complete



|  |         |
|--|---------|
| 4782 Mounting: Power Cord, 3 x 1 mm <sup>2</sup> / 3 x 18 AWG, Cable, Connector: IEC C13     | 4782    |
| 4022 Mounting: Power Supply Cord, 3 x 1.5 mm <sup>2</sup> , Screw clamps, Connector: IEC C13 | 4022    |
| 4785 Mounting: Power Cord, 3 x 1 mm <sup>2</sup> / 3 x 18 AWG, Cable, Connector: IEC C13     | 4785    |
| 4300-06 Mounting: Power Cord, 3 x 1 mm <sup>2</sup> / 3 x 18 AWG, Cable, Connector: IEC C13  | 4300-06 |
| 4012 Mounting: Power Supply Cord, 3 x 1.5 mm <sup>2</sup> , Screw clamps, Connector: IEC C13 | 4012    |
| <a href="#">Connector further types to 5707</a>  | ...     |

##### Interconnection Cord Overview complete



|  |           |
|--|-----------|
| Cord Sets 10 A, Interconnection, 2.0 m, IEC H05VV-F3G1.0, black                | 6007.0204 |
| Cord Sets 10 A, Interconnection, 1.0 m, Connector IEC C13, H05VV-F3G1.0, black | 6007.0212 |
| Cord Sets 10 A, Interconnection, 2.0 m, Connector IEC C13, H05VV-F3G1.0, black | 6007.0214 |

[Interconnection Cord further types to 5707](#)



Category / Description

[Power Supply Cord Overview complete](#)



|  |           |
|--|-----------|
| Cord Sets 10 A, Europlug, 2.5 m, Connector IEC C13, H05VV-F3G1.0, black          | 6004.0215 |
| Cord Sets 10 A, Europlug, 2.5 m, Connector IEC C13, H05VV-F3G1.0, black          | 6003.0215 |
| Cord Sets 10 A, uninsulated wires, 2.0 m, Connector IEC C13, H05VV-F3G1.0, black | 6000.0224 |
| Cord Sets 10 A, uninsulated wires, 2.0 m, Connector IEC C13, H05VV-F3G1.0, black | 6000.0214 |
| Cord Sets 10 A, United Kingdom, 2.5 m, Connector IEC C13, H05VV-F3G1.0, black    | 6044.0215 |
| <a href="#">Power Supply Cord further types to 5707</a>                          | ...       |

[Power Supply or Interconnection Cord Overview complete](#)



|  |           |
|--|-----------|
| Cord Sets 10 A, United Kingdom, 2.0 m, Connector IEC H05VV-F3G1.0, black   | 6044.0204 |
| <a href="#">Power Supply or Interconnection Cord further types to 5707</a> |           |

Mating Outlets/Connectors shuttered

[Power Cord Overview complete](#)



|   |         |
|---|---------|
| VAC13KS, Overview, diverse Connector IEC C13, cord end: | VAC13KS |
| Power cord with IEC connector C17, V-Lock, straight     | VAC17KS |
| <a href="#">Power Cord further types to 5707</a>        |         |