



Chipsmall Limited consists of a professional team with an average of over 10 year of expertise in the distribution of electronic components. Based in Hongkong, we have already established firm and mutual-benefit business relationships with customers from,Europe,America and south Asia,supplying obsolete and hard-to-find components to meet their specific needs.

With the principle of “Quality Parts,Customers Priority,Honest Operation,and Considerate Service”,our business mainly focus on the distribution of electronic components. Line cards we deal with include Microchip,ALPS,ROHM,Xilinx,Pulse,ON,Everlight and Freescale. Main products comprise IC,Modules,Potentiometer,IC Socket,Relay,Connector.Our parts cover such applications as commercial,industrial, and automotives areas.

We are looking forward to setting up business relationship with you and hope to provide you with the best service and solution. Let us make a better world for our industry!



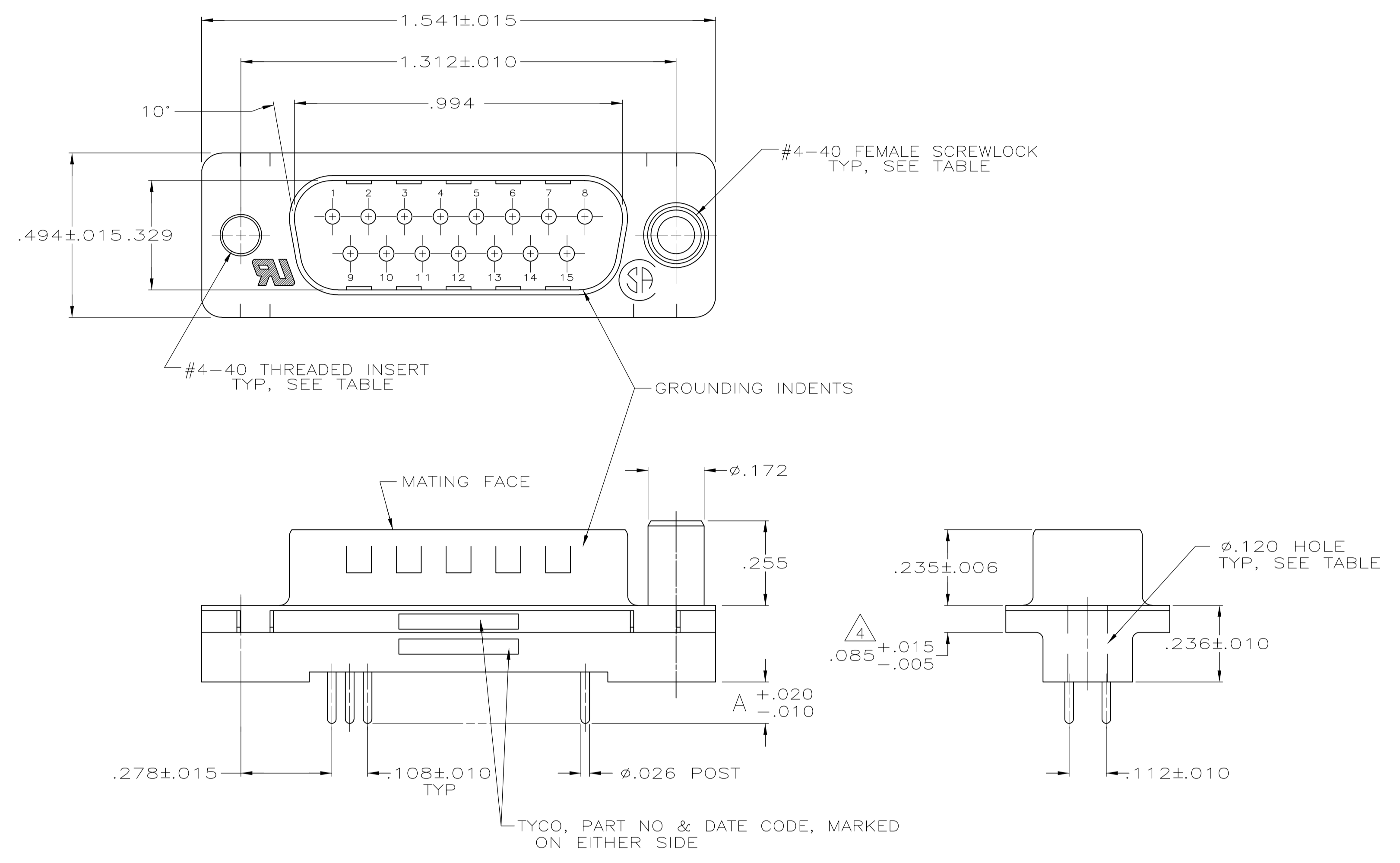
Contact us

Tel: +86-755-8981 8866 Fax: +86-755-8427 6832

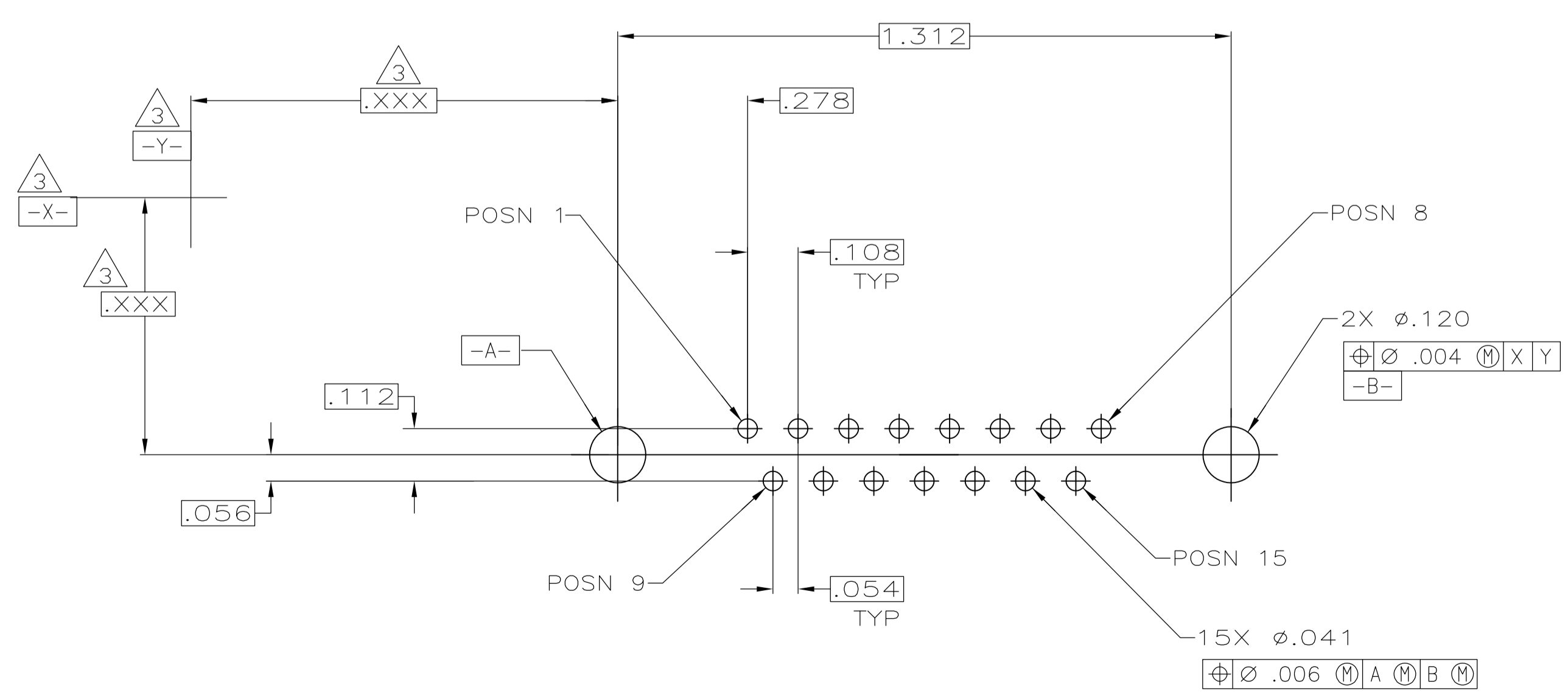
Email & Skype: info@chipsmall.com Web: www.chipsmall.com

Address: A1208, Overseas Decoration Building, #122 Zhenhua RD., Futian, Shenzhen, China





- ① HOUSING: FLAME RETARDANT, 94V-0 RATED, THERMOPLASTIC;
COLOR: BLACK
SHELL: CARBON STEEL
CONTACTS: BRASS
INSERTS: BRASS
SCREWLOCKS: ZINC
- ② SHELL: .000200 MIN TIN OVER .000100 MIN COPPER.
INSERTS: UNPLATED.
SCREWLOCKS: CLEAR CHROMATE.
CONTACTS: GOLD PLATED FOR A LENGTH OF .150 MIN FROM MATING END, .000030 MIN GOLD IN MATED AREA, .000100 MIN TIN ON OPPOSITE END, ALL OVER .000050 MIN NICKEL.
-OR-
GOLD FLASH OVER PALLADIUM NICKEL PLATED FOR A LENGTH OF .150 MIN FROM MATING END, .000030 MIN PALLADIUM NICKEL IN MATED AREA, .000100 MIN TIN ON OPPOSITE END, ALL OVER .000050 MIN NICKEL.
- ③ DATUMS AND BASIC DIMENSIONS ESTABLISHED BY CUSTOMER.
- ④ .110 MAX IN SHELL TAB CLINCH AREAS.



RECOMMENDED PC BOARD MOUNTING DIMENSIONS

W/FEMALE SCREWLOCKS	.170	1-5747872-6
W/THREADED INSERTS	.125	5747872-8
W/Ø.120	.170	5747872-4
HARDWARE	A	PART NO

THIS DRAWING IS A CONTROLLED DOCUMENT.

DIMENSIONS: INCHES	TOLERANCES UNLESS OTHERWISE SPECIFIED:	DIN B. LATTUCA 20SEP05	CHK S. BOLASH 20SEP05	NAME M. WALMSLEY 20SEP05	PRODUCT SPEC 108-40025	APPLICATION SPEC 114-40023	SIZE A1	SCALE 4:1	SHEET 1 OF 1	REV B1
0 PLC ± -	1 PLC ± -	2 PLC ± -	3 PLC ± .005	4 PLC ± -	ANGLES ± -	WEIGHT -	CUSTOMER DRAWING			

STE TE Connectivity

PLUG ASSEMBLY, SIZE 2, 15 POS., VERTICAL, .026 DIA POSTS, FRONT SHELL, AMPLIMITE HD-20

00779C=5747872