



Chipsmall Limited consists of a professional team with an average of over 10 year of expertise in the distribution of electronic components. Based in Hongkong, we have already established firm and mutual-benefit business relationships with customers from,Europe,America and south Asia,supplying obsolete and hard-to-find components to meet their specific needs.

With the principle of “Quality Parts,Customers Priority,Honest Operation,and Considerate Service”,our business mainly focus on the distribution of electronic components. Line cards we deal with include Microchip,ALPS,ROHM,Xilinx,Pulse,ON,Everlight and Freescale. Main products comprise IC,Modules,Potentiometer,IC Socket,Relay,Connector.Our parts cover such applications as commercial,industrial, and automotives areas.

We are looking forward to setting up business relationship with you and hope to provide you with the best service and solution. Let us make a better world for our industry!



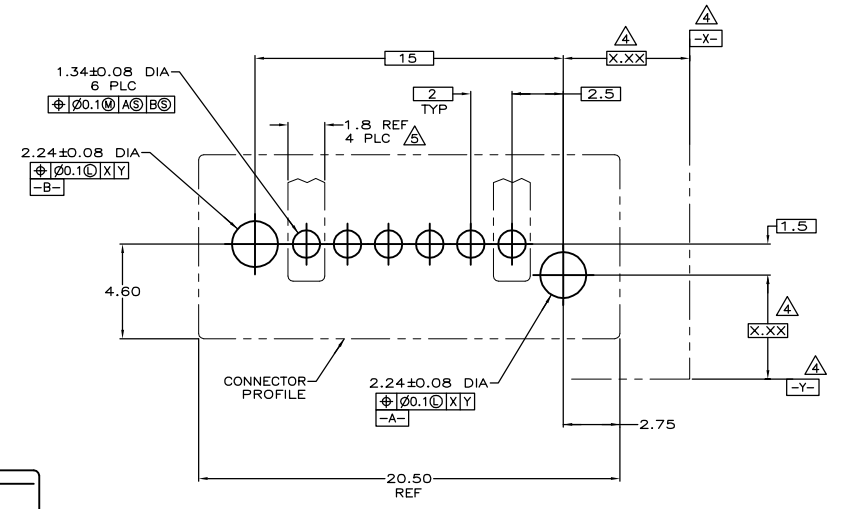
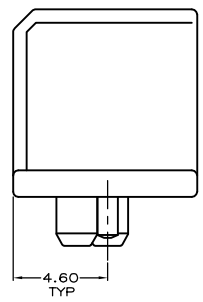
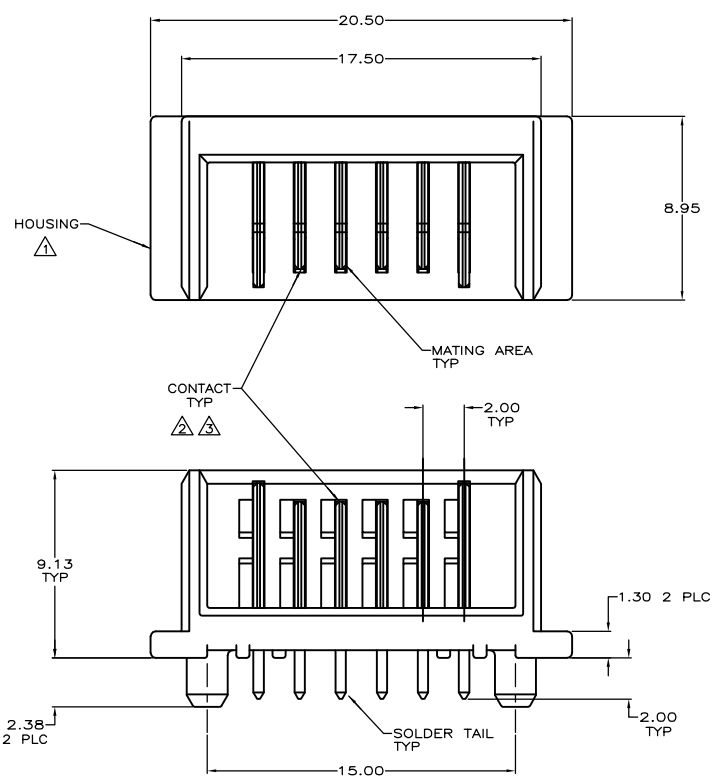
Contact us

Tel: +86-755-8981 8866 Fax: +86-755-8427 6832

Email & Skype: info@chipsmall.com Web: www.chipsmall.com

Address: A1208, Overseas Decoration Building, #122 Zhenhua RD., Futian, Shenzhen, China





- △ HOUSING: SPS, UL 94V-0 RATED, BLACK.
- △ CONTACT: BRASS.
- △ .076um MINIMUM GOLD OVER 0.76um MINIMUM PALLADIUM NICKEL ON MATING AREA, 3.80um MINIMUM TIN ON SOLDER TAIL, ALL OVER 1.27um MINIMUM NICKEL.
- △ DATUMS AND DIMENSIONS ESTABLISHED BY CUSTOMER.
- △ RECOMMENDED MINIMUM TRACE WIDTH FOR END POSITIONS WHEN CARRYING 3 AMPS: 1.8 WIDE x 55um THICK, BOTH SIDES.

5787531-1
PART NUMBER

THIS DRAWING IS A CONTROLLED DOCUMENT.		DATE: 07-08-99	BY: [Signature]	TYCO ELECTRONICS CORPORATION
DIMENSIONS: mm		DATE: 07-11-99	BY: [Signature]	SHANGHAI PRC
TOLERANCES UNLESS OTHERWISE SPECIFIED:		DATE: 07-11-99	BY: [Signature]	
Ø	PLC	±		PRODUCT SPEC
	PLC	± 0.13		
	PLC	±		APPLICATION SPEC
	PLC	±		
	PLC	±		
MATERIAL:	FINISH:	WEIGHT:	SIZE: A1	DATE CODE: 00779
			DRAWING NO: 5787531	
			CUSTOMER DRAWING	
			SCALE: 8:1	SHEET 1 OF 1