



Chipsmall Limited consists of a professional team with an average of over 10 year of expertise in the distribution of electronic components. Based in Hongkong, we have already established firm and mutual-benefit business relationships with customers from,Europe,America and south Asia,supplying obsolete and hard-to-find components to meet their specific needs.

With the principle of "Quality Parts,Customers Priority,Honest Operation,and Considerate Service",our business mainly focus on the distribution of electronic components. Line cards we deal with include Microchip,ALPS,ROHM,Xilinx,Pulse,ON,Everlight and Freescale. Main products comprise IC,Modules,Potentiometer,IC Socket,Relay,Connector.Our parts cover such applications as commercial,industrial, and automotives areas.

We are looking forward to setting up business relationship with you and hope to provide you with the best service and solution. Let us make a better world for our industry!



## Contact us

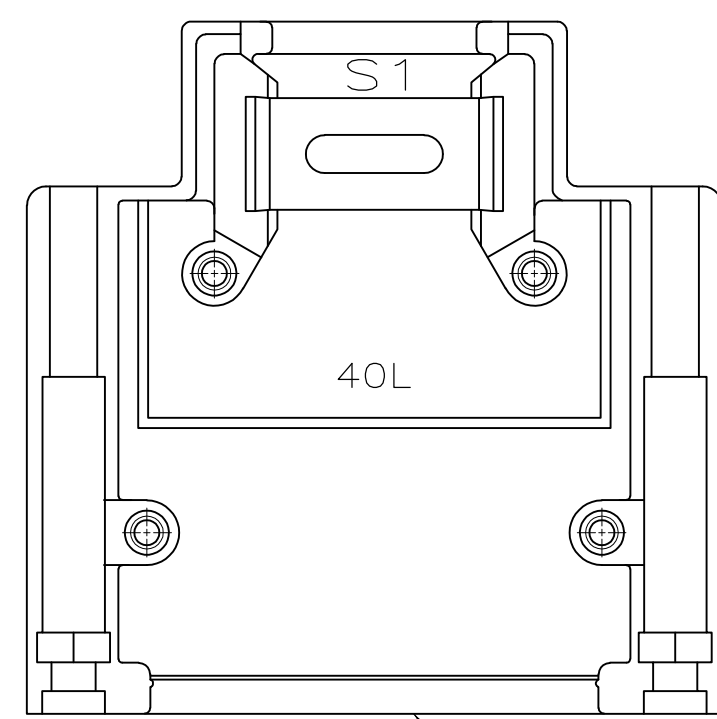
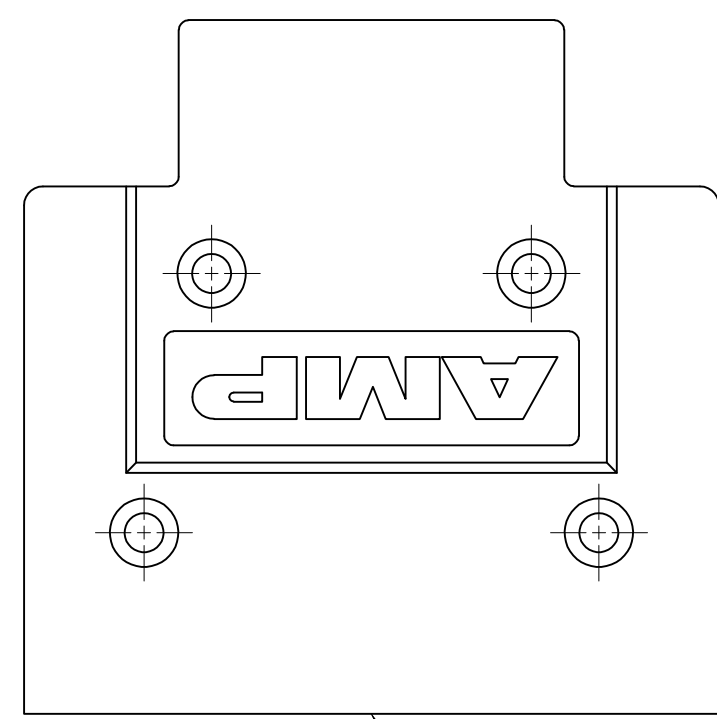
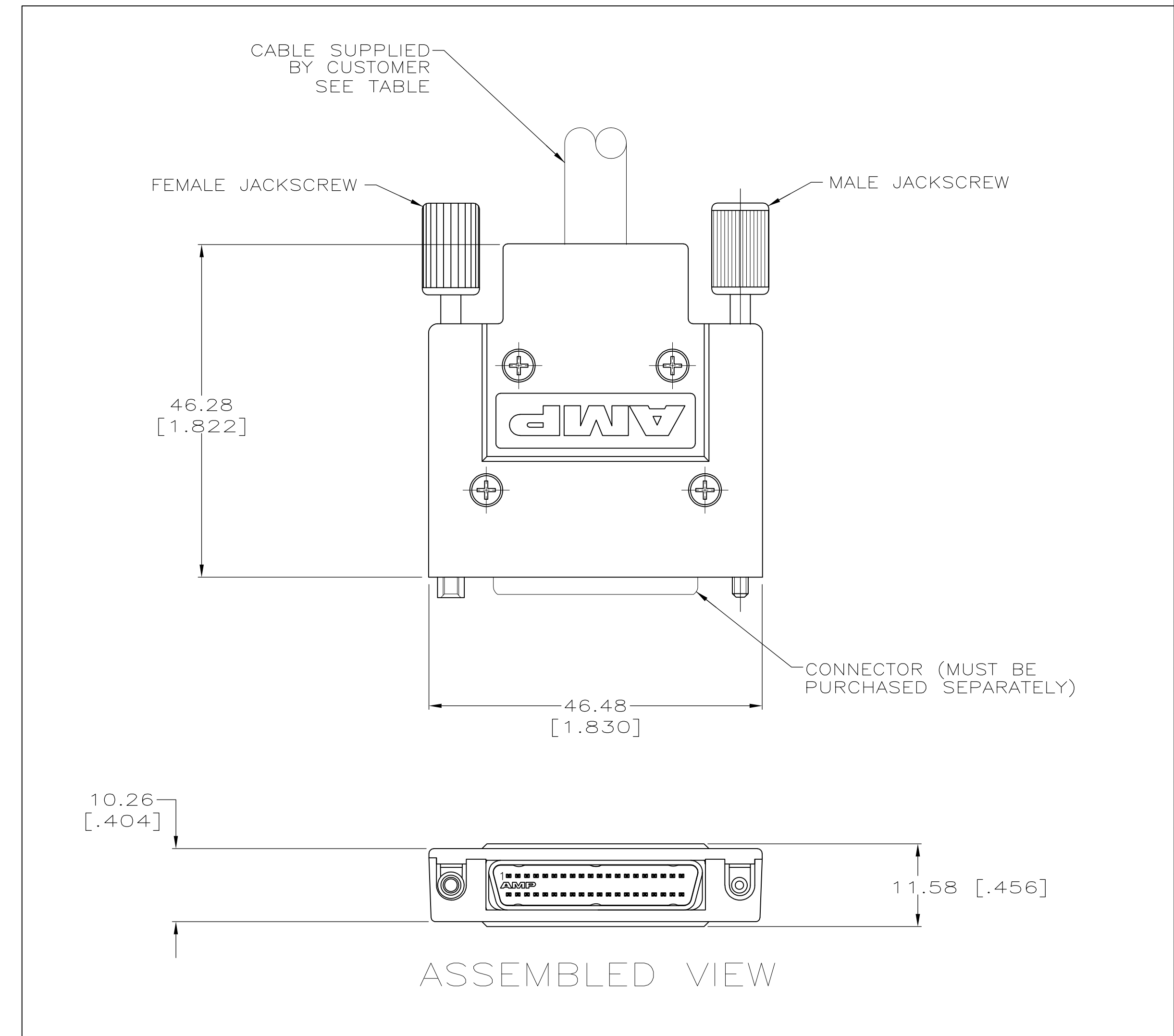
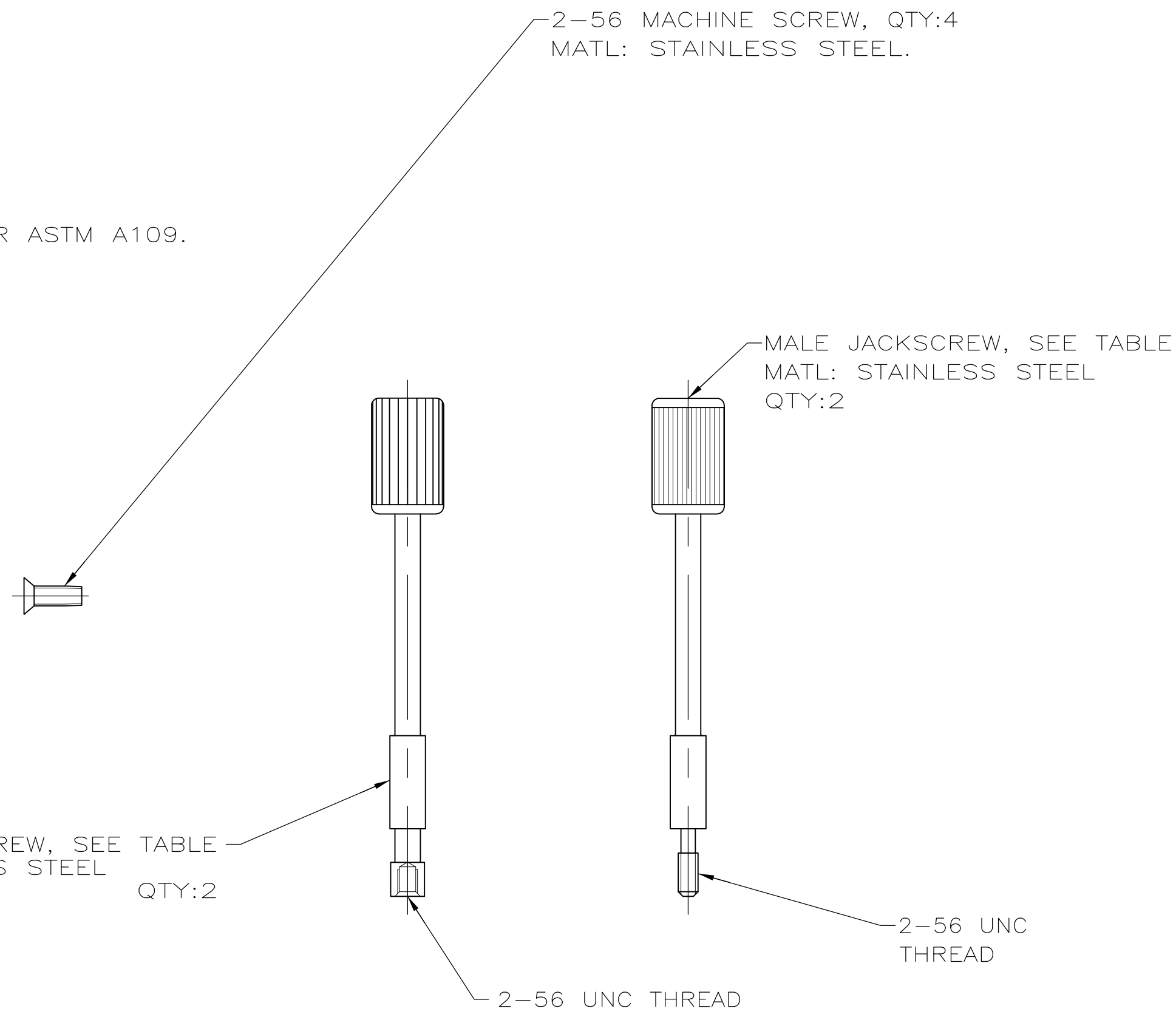
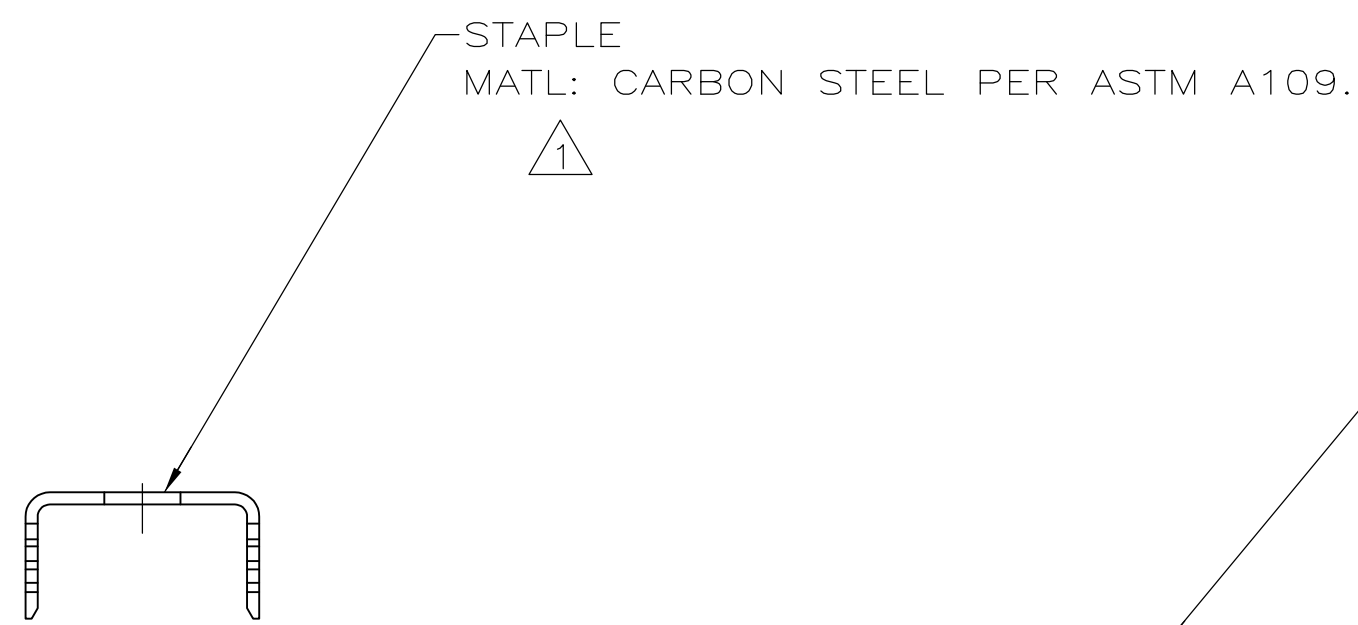
Tel: +86-755-8981 8866 Fax: +86-755-8427 6832

Email & Skype: info@chipsmall.com Web: www.chipsmall.com

Address: A1208, Overseas Decoration Building, #122 Zhenhua RD., Futian, Shenzhen, China



REVISIONS				
P	LT/R	DESCRIPTION	DATE	APP'D
B		REVISED PER ECO-16-005483	13APR2016	AP DG



UPPER BACKSHELL  
MATL: ZINC PER ASTM B86.  
②

LOWER BACKSHELL  
MATL: ZINC PER ASTM B86.  
②

- ① 1.27 μm [.000050] MIN BRIGHT TIN OVER 1.27 μm [.000050] MIN NICKEL.
- ② 2.54 μm [.000100] MIN NICKEL OVER 5.08 μm [.000200] MIN COPPER.
- ③ PARTS INDIVIDUALLY BULK PACKAGED.

JACKSCREW	CABLE MAX DIA.	PART NO.
FEMALE	8.89 [.350]	5787543-9
FEMALE	10.16 [.400]	5787543-8
FEMALE	11.43 [.450]	5787543-7
MALE	8.89 [.350]	5787543-3
MALE	10.16 [.400]	5787543-2
MALE	11.43 [.450]	5787543-1

THIS DRAWING IS A CONTROLLED DOCUMENT.

<p>APPROVED: M. WALMSLEY</p> <p>DATE: 26AUG05</p> <p>PRODUCT SPEC</p> <p>APPLICATION SPEC</p> <p>WEIGHT: 0.000000</p> <p>CUSTOMER DRAWING</p>	<p>DRAWN: G. PETERS</p> <p>CHK: S. SHUEY</p> <p>DATE: 26AUG05</p> <p>NAME: BACKSHELL KIT, UNASSEMBLED, 40 POSITION .050 SERIES AMPLIMITE</p> <p>SIZE: A1</p> <p>CAGE CODE: 00779</p> <p>DRAWING NO: 5787543</p> <p>SCALE: 1:1</p>	<p>STE TE Connectivity</p> <p>RESTRICTED TO</p> <p>SHEET 1 OF 1</p> <p>REV B</p>
---	---	--