



Chipsmall Limited consists of a professional team with an average of over 10 year of expertise in the distribution of electronic components. Based in Hongkong, we have already established firm and mutual-benefit business relationships with customers from,Europe,America and south Asia,supplying obsolete and hard-to-find components to meet their specific needs.

With the principle of “Quality Parts,Customers Priority,Honest Operation,and Considerate Service”,our business mainly focus on the distribution of electronic components. Line cards we deal with include Microchip,ALPS,ROHM,Xilinx,Pulse,ON,Everlight and Freescale. Main products comprise IC,Modules,Potentiometer,IC Socket,Relay,Connector.Our parts cover such applications as commercial,industrial, and automotives areas.

We are looking forward to setting up business relationship with you and hope to provide you with the best service and solution. Let us make a better world for our industry!



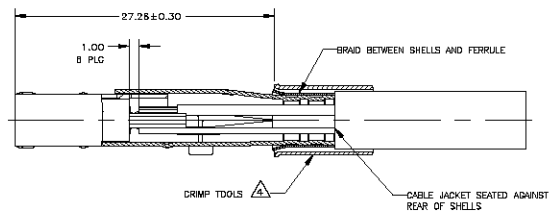
Contact us

Tel: +86-755-8981 8866 Fax: +86-755-8427 6832

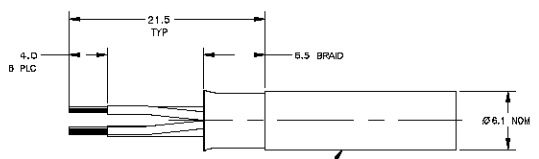
Email & Skype: info@chipsmall.com Web: www.chipsmall.com

Address: A1208, Overseas Decoration Building, #122 Zhenhua RD., Futian, Shenzhen, China





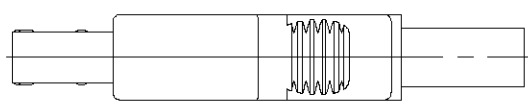
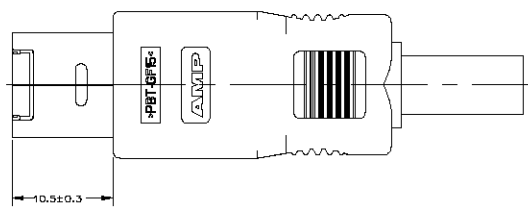
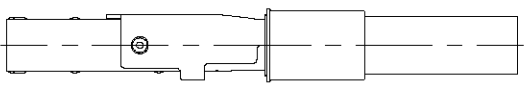
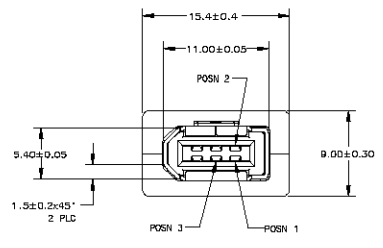
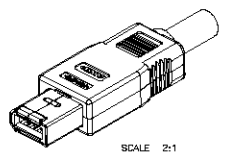
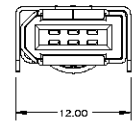
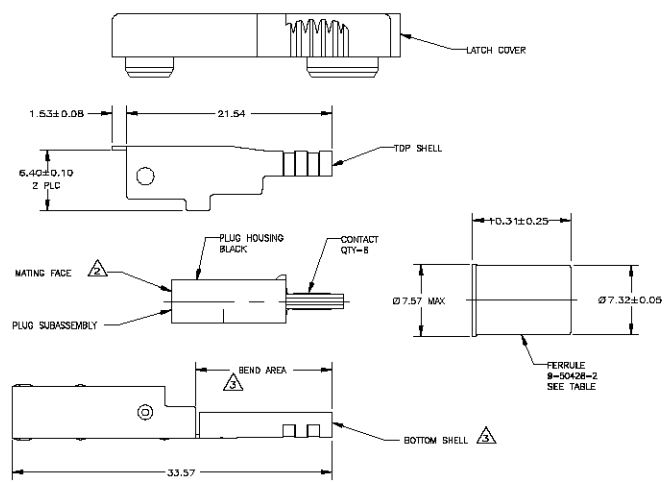
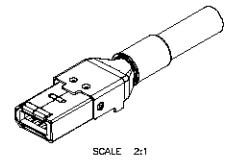
ASSEMBLED VIEW BEFORE CRIMP



CUSTOMER SUPPLIED CABLE
 CABLE 378974-1, GRAY, 8 CONDUCTOR,
 30/22 AWG, UNSTRIPPED IS AVAILABLE

- ⚠️ PLUG HOUSING AND COVERS: POLYESTER PBT, UL 94V-0 RATED; CONTACTS: PHOSPHOR BRONZE; SHELLS: CARBON STEEL; FERRULE: COPPER.
- ⚠️ FERRULE: 0.002-0.005 TIN OVER NICKEL; SHELLS: 0.002-0.005 TIN OVER NICKEL CONTACTS: 0.00075 MIN GOLD OR (0.00075 MIN GOLD OVER 0.00075 MIN PALLADIUM) IN A 0.4 MIN WIDE AREA 0.82 FROM MATING FACE END OF CONTACT TIP, 0.00351 MIN TIN 5 MIN FROM OPPOSITE END, ALL OVER 0.00127 MIN NICKEL.
- ⚠️ BOTTOM SHELL SHOWN STRAIGHT, WILL BE DELIVERED WITH BEND AREA, FOR PLUG SUBASSEMBLY INSERTION.
- ⚠️ RECOMMENDED CRIMP TOOLS: PRO CRIMPER 354940-1 WITH DIE SET 58537-1 FOR Ø6.1 CABLE.

LEAD FREE



788513-3	788514-3	5787949-1	9-50428-2	788511-1	GRAY	788512-1	GRAY	5787950-1
TOP SHELL (1)	BOTTOM SHELL (1)	PLUG SUB-ASSY (1)	FERRULE (1)	COVER (1)	COLOR	LATCH COVER (1)	COLOR	PART NO

THIS DRAWING IS A CONTROLLED DOCUMENT.

DATE	DESIGNED BY	DESIGNED BY	DATE
01/20/2010	LEI ZHOU	STEVEN YAO	01/20/2010
APP'D	CHECKED	APP'D	CHECKED

Application: Type Electronic Corporation
 SIVON SuperHigh Speed
 PLUG KIT, UNASSEMBLED, 6 POSITION, IEEE P1394

SIZE: A1
 SHEET: 1 OF 1
 SCALE: 4:1
 DRAWING NO: 00779C-5787950
 CUSTOMER DRAWING