



Chipsmall Limited consists of a professional team with an average of over 10 year of expertise in the distribution of electronic components. Based in Hongkong, we have already established firm and mutual-benefit business relationships with customers from,Europe,America and south Asia,supplying obsolete and hard-to-find components to meet their specific needs.

With the principle of "Quality Parts,Customers Priority,Honest Operation,and Considerate Service",our business mainly focus on the distribution of electronic components. Line cards we deal with include Microchip,ALPS,ROHM,Xilinx,Pulse,ON,Everlight and Freescale. Main products comprise IC,Modules,Potentiometer,IC Socket,Relay,Connector.Our parts cover such applications as commercial,industrial, and automotives areas.

We are looking forward to setting up business relationship with you and hope to provide you with the best service and solution. Let us make a better world for our industry!



## Contact us

Tel: +86-755-8981 8866 Fax: +86-755-8427 6832

Email & Skype: info@chipsmall.com Web: www.chipsmall.com

Address: A1208, Overseas Decoration Building, #122 Zhenhua RD., Futian, Shenzhen, China



4

3

2

1

THIS DRAWING IS UNPUBLISHED. RELEASED FOR PUBLICATION  
 © COPYRIGHT - By - ALL RIGHTS RESERVED.

LOC		DIST		REVISIONS			
P	LTR	DESCRIPTION		DATE	DWN	APVD	
	B1	REVISED PER ECO-11-004835		11MAR11	RK	HMR	

Dimensions: 26.80, 13.40, 0.40, 0.80, 1.60, 14.68, 31.65

Callouts: -B-, SHELL, MATING FACE, 8 (Datum A)

Dimensions: 42.70, 37.70, 28.30±0.05, 6.00, 3.50, 3.30, 2.08, 6.84

Callouts: 2X M2 X 0.4-4H, -A-, 2X BRACKET, 68X CONTACT, 68X 0.254±0.013 (Datum A), 0.20 (M) (B) (C) (A) (S) (Datum A), 6 (Datum A)

1 HOUSING & PIN SPACER: THERMOPLASTIC, BLACK, UL 94V-0 RATED.  
 SHELL: CARBON STEEL.  
 CONTACTS: PHOSPHOR BRONZE.  
 BRACKETS: STEEL.

2 SHELL: 5.08µm MIN NICKEL OVER 2.54µm MIN COPPER.  
 CONTACTS: 0.76µm MIN GOLD ON MATING END, 3.75µm MIN TIN ON  
 SOLDER TAILS, BOTH OVER 1.27µm MIN NICKEL ON ENTIRE CONTACT.  
 BRACKETS: TIN PLATED.

3 CONTACTS DESIGNED FOR USE ON 1.60±0.15 THICK PC BOARD WITH  
 PLATED THRU MOUNTING HOLES.

4 RECEPTACLE ASSEMBLY DESIGNED FOR USE WITH 1.12±0.08 THICK PANEL.

5 DATUMS AND DIMENSIONS ESTABLISHED BY CUSTOMER.

6 POSITION TOLERANCE APPLIES AT CONTACT TIP ONLY.

7 CONTACTS DESIGNED FOR USE ON 2.35±0.15 THICK PC BOARD WITH  
 PLATED THRU MOUNTING HOLES.

8 DATE CODE MARKED IN APPROXIMATE AREA SHOWN.

Dimensions: 5.20, 0.20, 3.46, 0.389, 1.35, 5.33, 1.15, 1.20, 1.15

Callouts: HOUSING, PIN SPACER, 0.152 (K) 68X INDIVIDUALLY, (K) 34X INDIVIDUALLY, SEE DETAIL Z, 68X 0.30 (Datum K), 0.20 (S) (C) (B) (Datum K)

7	3.55	5796055-2
3	2.27	5796055-1
REMARKS	F	PART NUMBER

THIS DRAWING IS A CONTROLLED DOCUMENT.		DWN	J.GERACE	31JAN05
DIMENSIONS:		CHK	S.SHUEY	31JAN05
mm	TOLERANCES UNLESS OTHERWISE SPECIFIED:	APVD	M.WALMSLEY	31JAN05
0 PLC	± -	PRODUCT SPEC	108-1471	
1 PLC	± -	APPLICATION SPEC	114-6057	
2 PLC	± 0.13	WEIGHT	-	
3 PLC	± -	CUSTOMER DRAWING		
4 PLC	± -	SCALE	5:1	
ANGLES	± -	SHEET	1 of 2	
FINISH	2	REV	B1	

TE Connectivity  
 RECEPTACLE ASSEMBLY, RIGHT ANGLE,  
 68 POS, SHIELDED, CHAMP 0.8mm

SIZE: A2 CAGE CODE: 00779 DRAWING NO: C=5796055 RESTRICTED TO: -

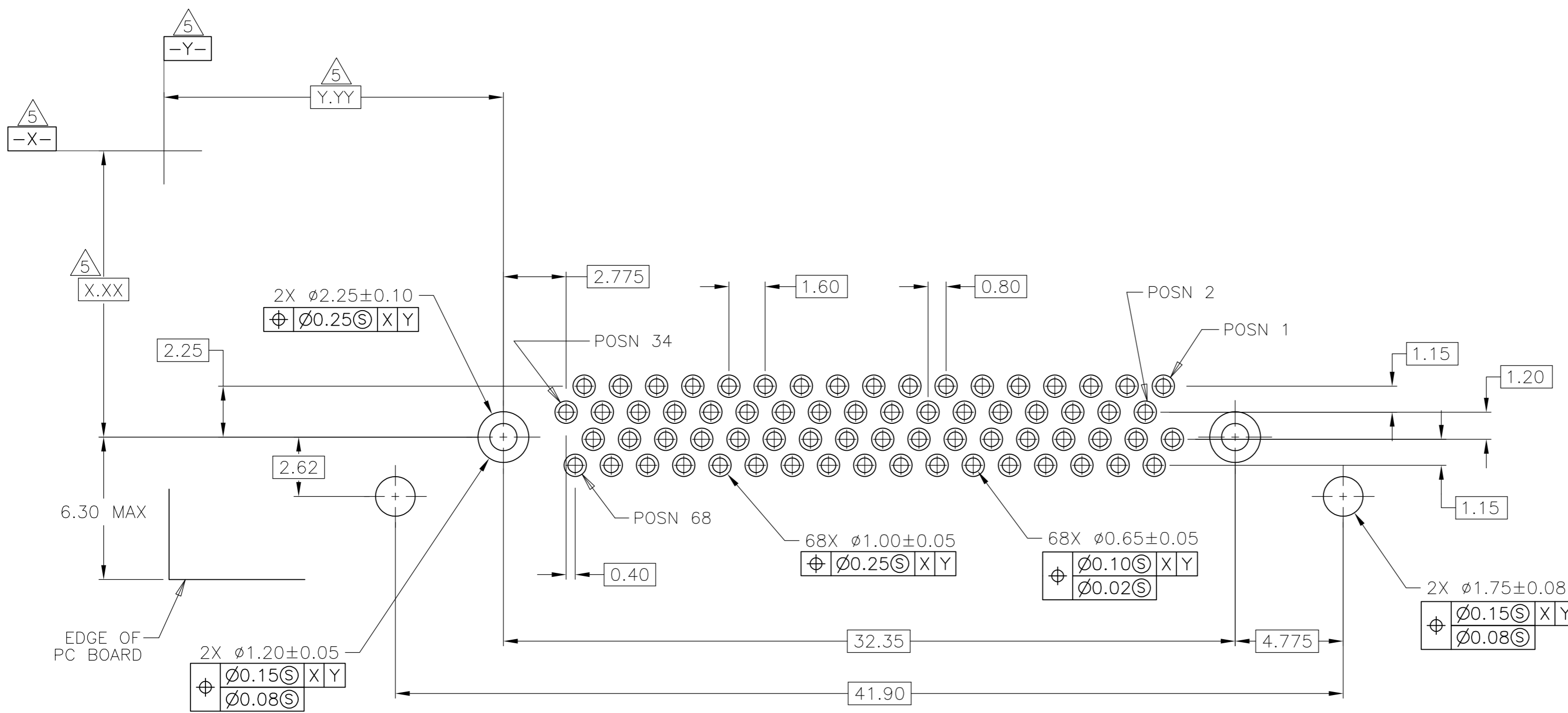
1471-9 (3/11)

5796055

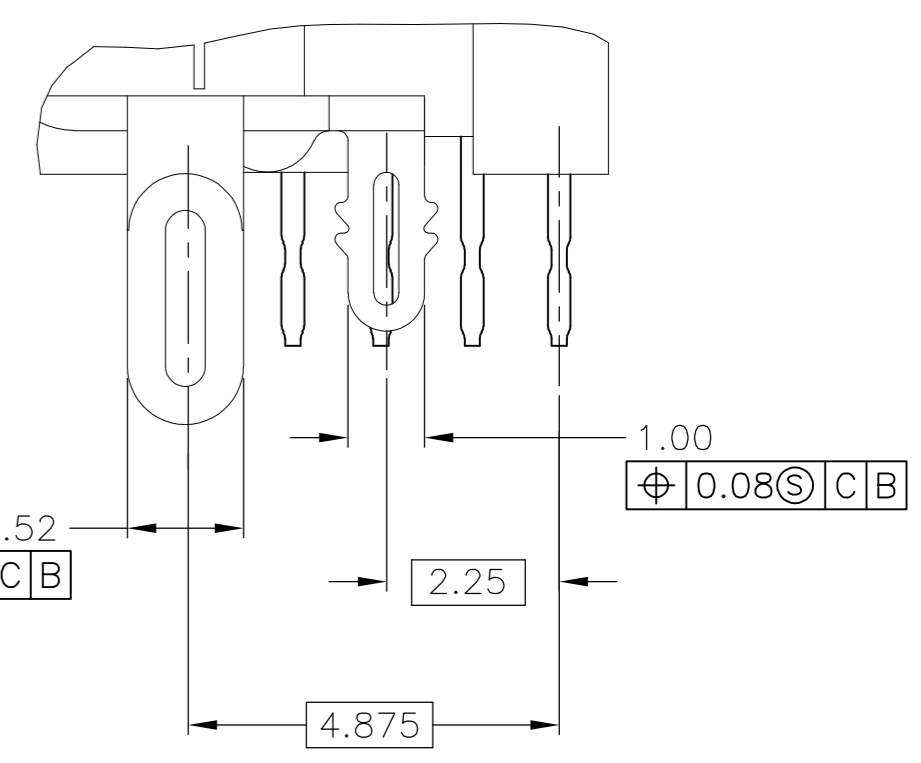
A

THIS DRAWING IS UNPUBLISHED. RELEASED FOR PUBLICATION  
 © COPYRIGHT - By - ALL RIGHTS RESERVED.

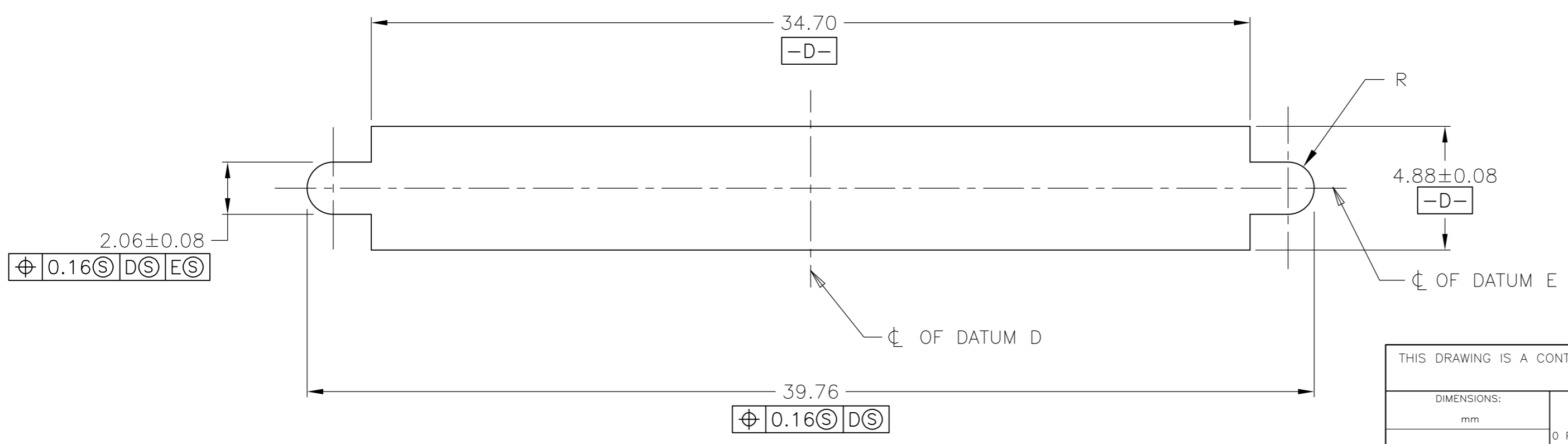
LOC		DIST		REVISIONS			
P	LTR	DESCRIPTION	DATE	DWN	APVD		
GP	00	SEE SHEET 1	-	-	-		



PC BOARD MOUNTING DIMENSIONS



DETAIL Z  
SCALE 10:1



PANEL CUT-OUT DIMENSIONS

THIS DRAWING IS A CONTROLLED DOCUMENT.		DWN	J.GERACE	31JAN05		TE Connectivity			
DIMENSIONS: mm		CHK	S.SHUEY	31JAN05		NAME			
TOLERANCES UNLESS OTHERWISE SPECIFIED:		APVD	M.WALMSLEY	31JAN05		RECEPTACLE ASSEMBLY, RIGHT ANGLE, 68 POS, SHIELDED, CHAMP 0.8mm			
0 PLC ± - 1 PLC ± - 2 PLC ± 0.13 3 PLC ± - 4 PLC ± - ANGLES ± -		PRODUCT SPEC	APPLICATION SPEC			SIZE	CAGE CODE	DRAWING NO	RESTRICTED TO
MATERIAL		FINISH	WEIGHT		A2 00779		C=5796055	REV B1	
		CUSTOMER DRAWING		SCALE	6:1	SHEET	2 OF 2		