



Chipsmall Limited consists of a professional team with an average of over 10 year of expertise in the distribution of electronic components. Based in Hongkong, we have already established firm and mutual-benefit business relationships with customers from,Europe,America and south Asia,supplying obsolete and hard-to-find components to meet their specific needs.

With the principle of “Quality Parts,Customers Priority,Honest Operation,and Considerate Service”,our business mainly focus on the distribution of electronic components. Line cards we deal with include Microchip,ALPS,ROHM,Xilinx,Pulse,ON,Everlight and Freescale. Main products comprise IC,Modules,Potentiometer,IC Socket,Relay,Connector.Our parts cover such applications as commercial,industrial, and automotives areas.

We are looking forward to setting up business relationship with you and hope to provide you with the best service and solution. Let us make a better world for our industry!



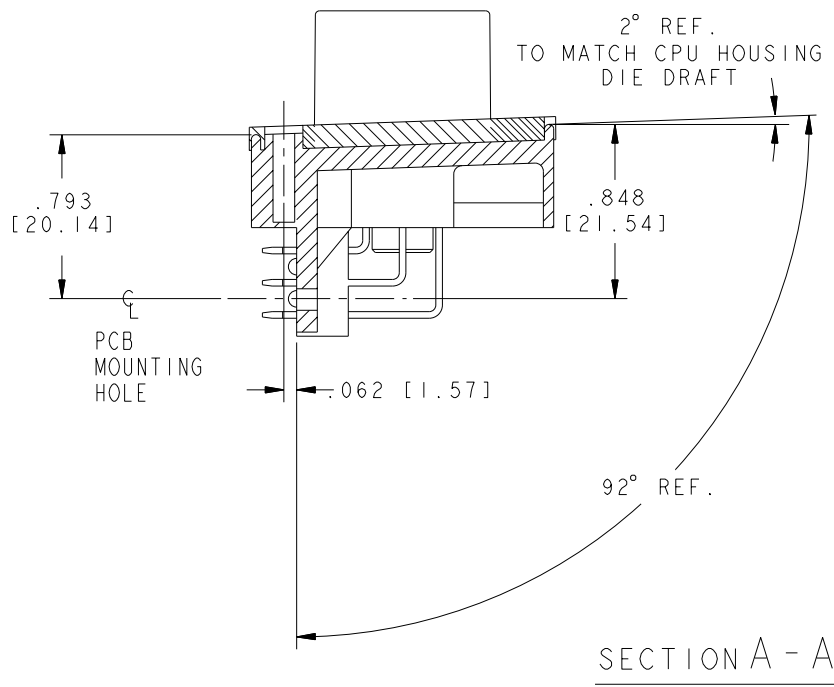
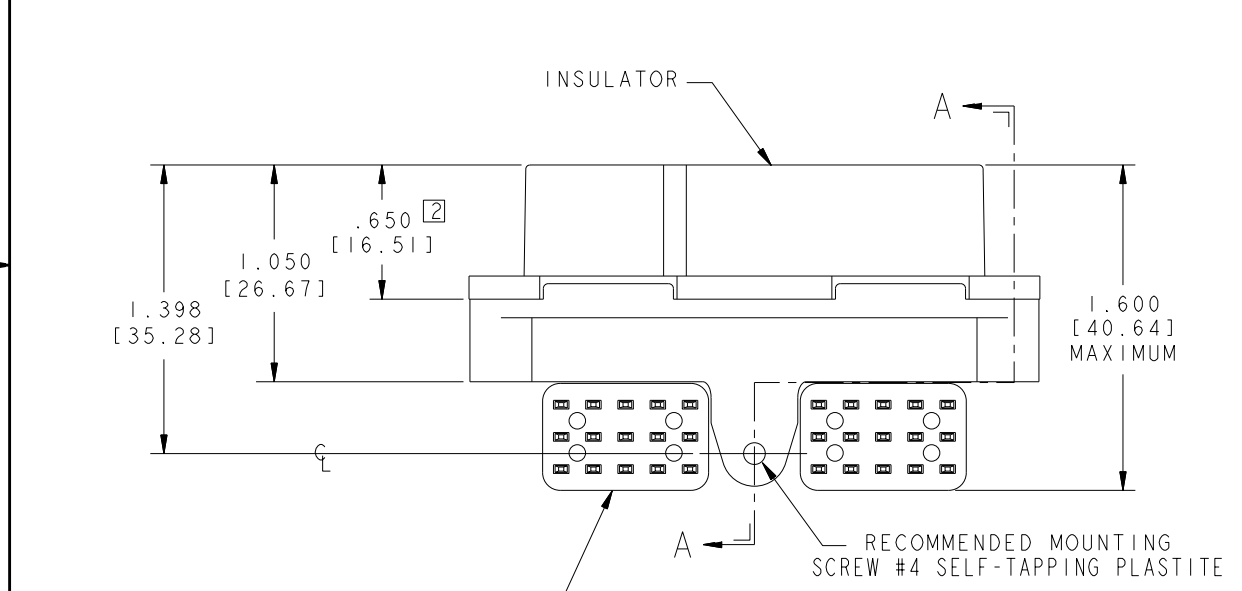
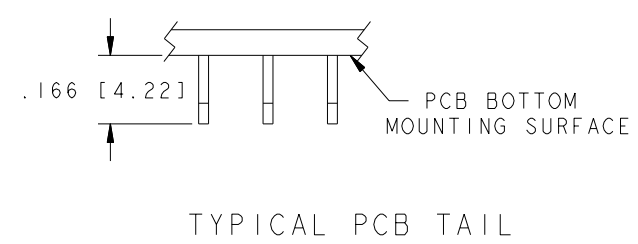
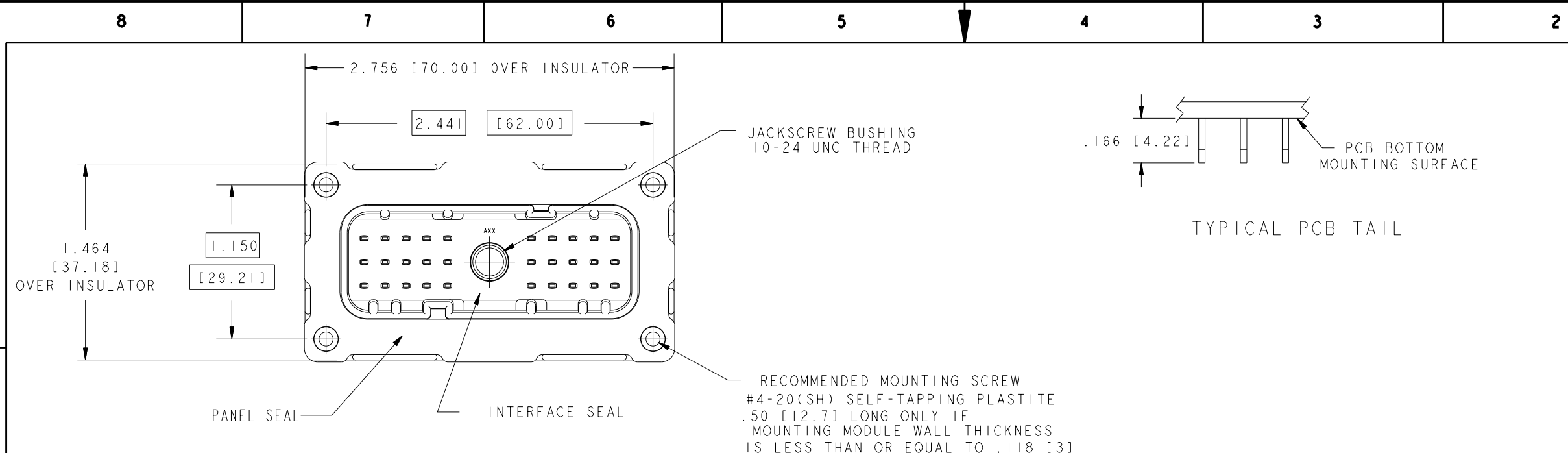
## Contact us

Tel: +86-755-8981 8866 Fax: +86-755-8427 6832

Email & Skype: info@chipsmall.com Web: www.chipsmall.com

Address: A1208, Overseas Decoration Building, #122 Zhenhua RD., Futian, Shenzhen, China

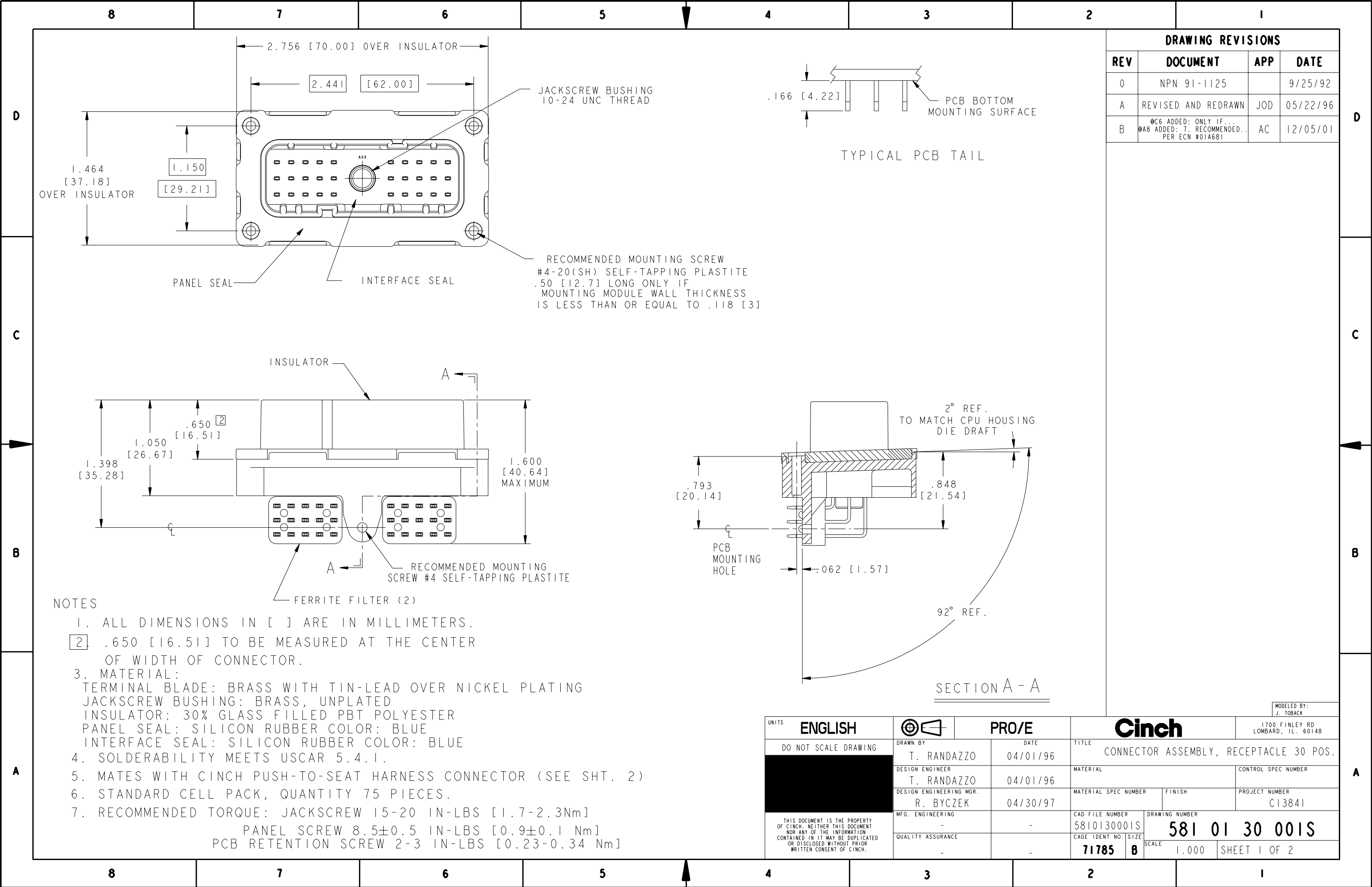


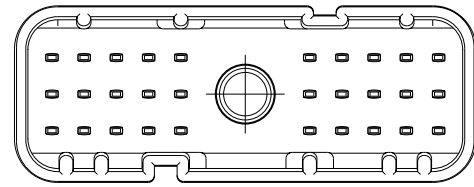


DRAWING REVISIONS			
REV	DOCUMENT	APP	DATE
0	NPN 91-1125		9/25/92
A	REVISED AND REDRAWN	JOD	05/22/96
B	@C6 ADDED: ONLY IF... @A8 ADDED: 7. RECOMMENDED... PER ECN #01A681	AC	12/05/01

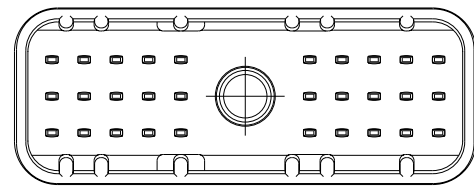
- NOTES
- ALL DIMENSIONS IN [ ] ARE IN MILLIMETERS.
  - .650 [16.51] TO BE MEASURED AT THE CENTER OF WIDTH OF CONNECTOR.
  - MATERIAL:  
 TERMINAL BLADE: BRASS WITH TIN-LEAD OVER NICKEL PLATING  
 JACKSCREW BUSHING: BRASS, UNPLATED  
 INSULATOR: 30% GLASS FILLED PBT POLYESTER  
 PANEL SEAL: SILICON RUBBER COLOR: BLUE  
 INTERFACE SEAL: SILICON RUBBER COLOR: BLUE
  - SOLDERABILITY MEETS USCAR 5.4.1.
  - MATES WITH CINCH PUSH-TO-SEAT HARNESS CONNECTOR (SEE SHT. 2)
  - STANDARD CELL PACK, QUANTITY 75 PIECES.
  - RECOMMENDED TORQUE: JACKSCREW 15-20 IN-LBS [1.7-2.3Nm]  
 PANEL SCREW 8.5±0.5 IN-LBS [0.9±0.1 Nm]  
 PCB RETENTION SCREW 2-3 IN-LBS [0.23-0.34 Nm]

UNITS	ENGLISH	PRO/E	Cinch		MODELED BY: J. TOBACK
DO NOT SCALE DRAWING	DRAWN BY T. RANDAZZO	DATE 04/01/96	TITLE CONNECTOR ASSEMBLY, RECEPTACLE 30 POS.		
	DESIGN ENGINEER T. RANDAZZO	04/01/96	MATERIAL		CONTROL SPEC NUMBER
	DESIGN ENGINEERING MGR. R. BYCZEK	04/30/97	MATERIAL SPEC NUMBER	FINISH	PROJECT NUMBER C13841
MFG. ENGINEERING		-	CAD FILE NUMBER 5810130001S	DRAWING NUMBER 581 01 30 001S	
QUALITY ASSURANCE		-	CAGE IDENT NO. SIZE 71785 B	SCALE 1.000	SHEET 1 OF 2

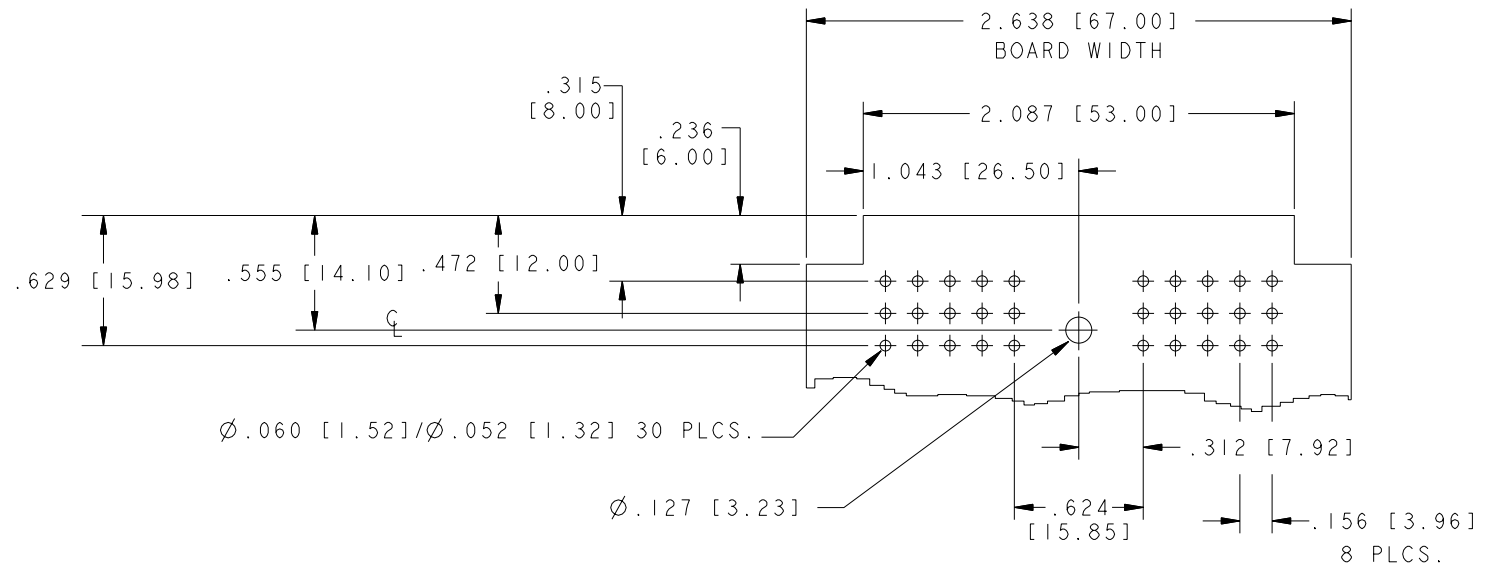




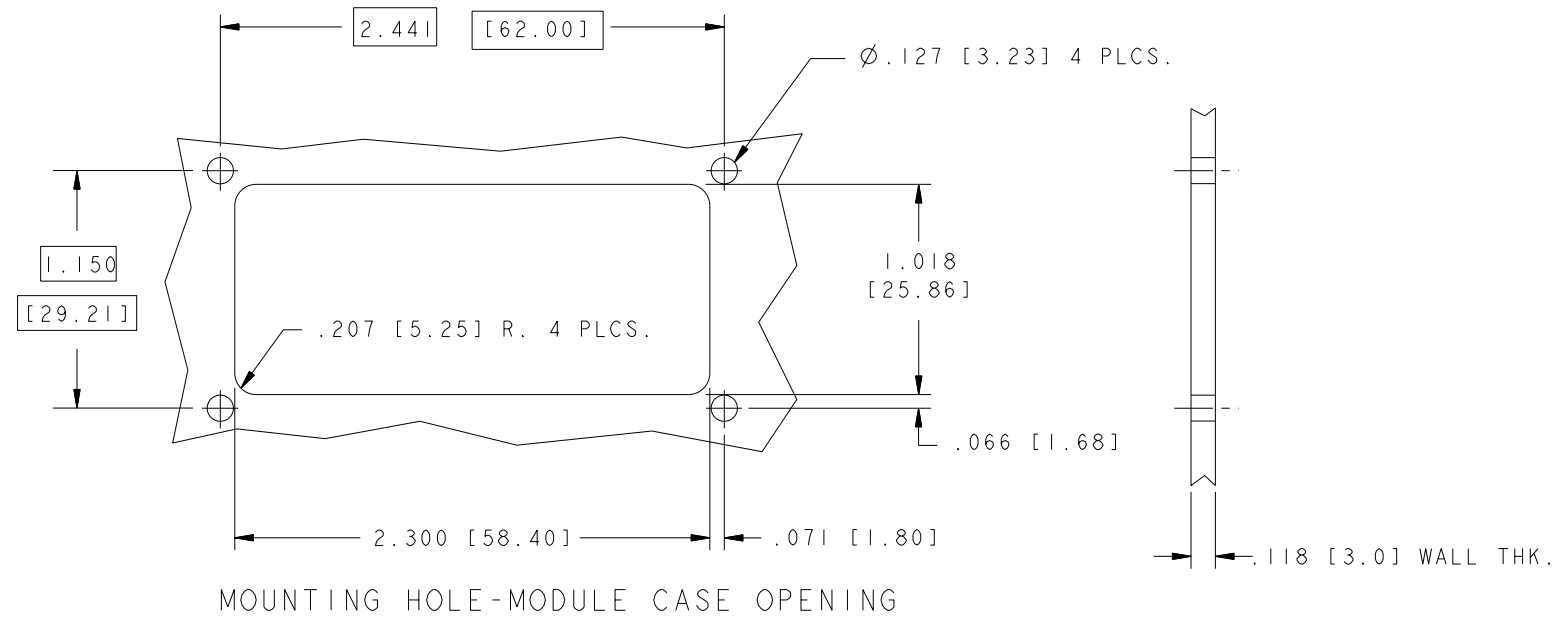
POLARIZATION "A"  
581 01 30 001  
HOUSING COLOR: GRAY



POLARIZATION "B"  
581 01 30 002  
HOUSING COLOR: BLACK



RECOMMENDED PC BOARD LAYOUT



MOUNTING HOLE-MODULE CASE OPENING

UNITS <b>ENGLISH</b>	<b>Cinch</b>		1700 FINLEY RD LOMBARD, IL. 60148
DO NOT SCALE DRAWING	TITLE CONNECTOR ASSEMBLY, RECEPTACLE 30 POS.		
	<b>PRO/E DRAWING</b>		
THIS DOCUMENT IS THE PROPERTY OF CINCH. NEITHER THIS DOCUMENT NOR ANY OF THE INFORMATION CONTAINED IN IT MAY BE DUPLICATED OR DISCLOSED WITHOUT PRIOR WRITTEN CONSENT OF CINCH.	CAD FILE NUMBER	DRAWING NUMBER	REV
	5810130001S	581 01 30 001S	B
	CAGE IDENT NO. SIZE <b>71785 B</b>	SCALE 1.000	SHEET 2 OF 2