



Chipsmall Limited consists of a professional team with an average of over 10 year of expertise in the distribution of electronic components. Based in Hongkong, we have already established firm and mutual-benefit business relationships with customers from,Europe,America and south Asia,supplying obsolete and hard-to-find components to meet their specific needs.

With the principle of “Quality Parts,Customers Priority,Honest Operation,and Considerate Service”,our business mainly focus on the distribution of electronic components. Line cards we deal with include Microchip,ALPS,ROHM,Xilinx,Pulse,ON,Everlight and Freescale. Main products comprise IC,Modules,Potentiometer,IC Socket,Relay,Connector.Our parts cover such applications as commercial,industrial, and automotives areas.

We are looking forward to setting up business relationship with you and hope to provide you with the best service and solution. Let us make a better world for our industry!



## Contact us

Tel: +86-755-8981 8866 Fax: +86-755-8427 6832

Email & Skype: info@chipsmall.com Web: www.chipsmall.com

Address: A1208, Overseas Decoration Building, #122 Zhenhua RD., Futian, Shenzhen, China

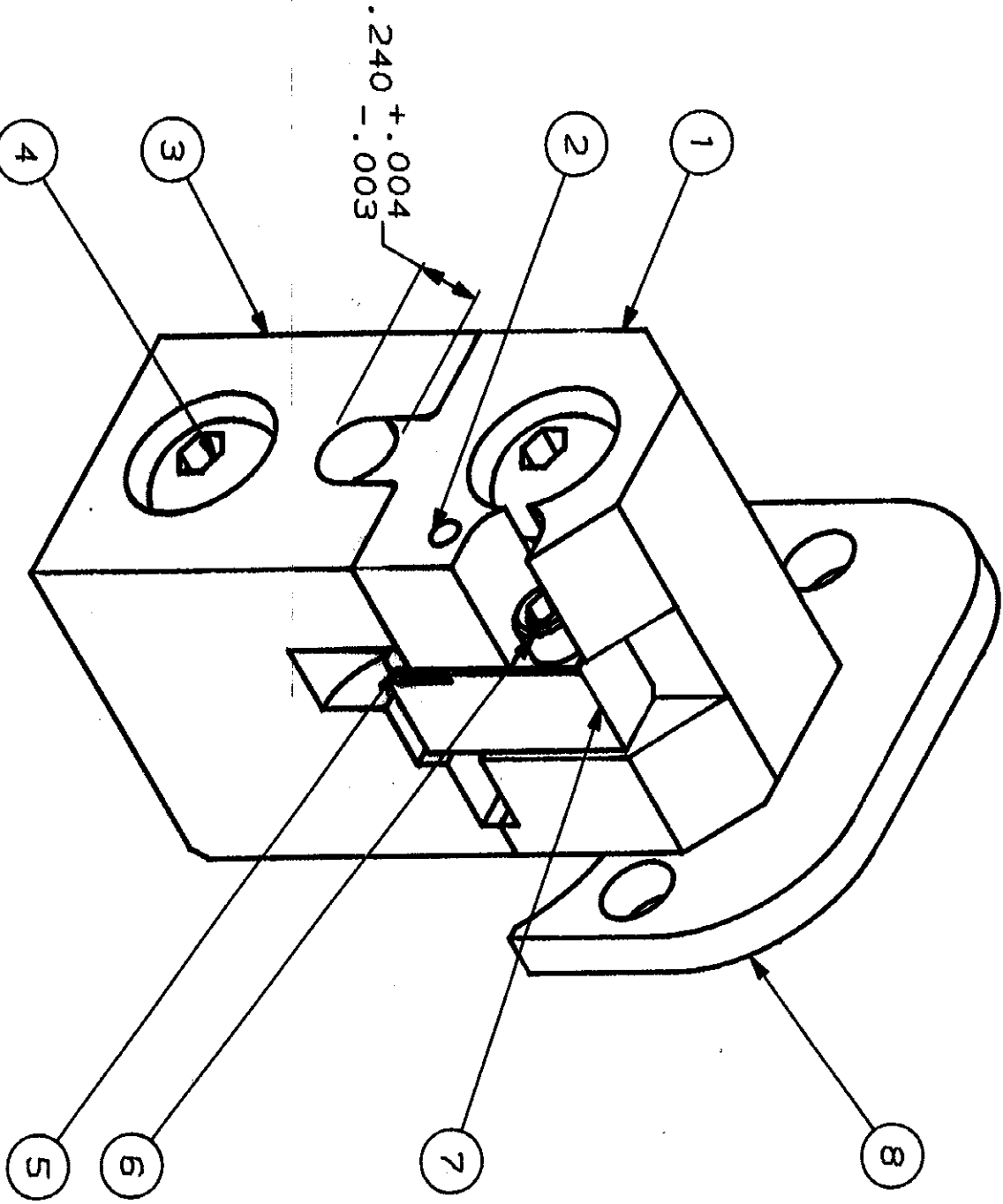


THIS INFORMATION IS CONFIDENTIAL AND IS DISCLOSED TO YOU ON CONDITION THAT NO FURTHER DISCLOSURE IS MADE BY YOU TO OTHER THAN AMP PERSONNEL WITHOUT WRITTEN AUTHORIZATION FROM AMP INCORPORATED, HARRISBURG, PA.

DRAWING MADE IN THIRD ANGLE PROJECTION

APPLY ITEM #10 TO ITEM #6

USED ON SEE TABS



CUSTOMER DRAWING

LOC	M	DIST	3
PIF	LTR	REVISION RECORD	APP DATE
8	7	6	5

NOT SHOWN

AS REQ'D	QTY	DWG SIZE	PART NO	DESCRIPTION	ITEM NO
2	-	-	1-234195-5	LOCTITE #222	10
1	-	-	1-21046-3	RING RETAINING	9
1	B	-	313537-1	PLATE, DIE HOLDER	8
1	C	-	313539-1	LOCATOR	7
1	-	-	1-21000-1	SCREW SOC HD CAP	6
1	B	-	313538-1	STOP	5
2	-	-	306592-1	SCREW SPECIAL	4
1	D	-	313541-2	INSERT BARREL, LOWER	3
1	-	-	21119-4	PIN SLOTTED	2
1	D	-	313540-2	INSERT BARREL, UPPER	1
-2	-	-			

REVISION OF EACH ASSY NO WHEN BLANK, USE DWG REVISION

DIMENSIONS IN INCHES. TOLERANCES UNLESS OTHERWISE SPECIFIED:

- 2 PL DEC # -
- 3 PL DEC # -
- 4 PL DEC # -
- ANGLES # -
- SURF TEXTURE: -7
- REMOVE BURRS, BREAK SHARP EDGES .015 R MAX

C58248

MATERIAL	HEAT TREAT	FINISH
PARTS LIST		
DR. P.M. [Signature]	APP. [Signature]	AMP INCORPORATED
CHK. [Signature]	REL. [Signature]	Harrisburg, Pa.
DIE ASSEMBLY		
SCALE	DWG NO	SHEET
B	C58248	1 OF 1
3	2	1

AMP 3306 REV 8-78