



Chipsmall Limited consists of a professional team with an average of over 10 year of expertise in the distribution of electronic components. Based in Hongkong, we have already established firm and mutual-benefit business relationships with customers from,Europe,America and south Asia,supplying obsolete and hard-to-find components to meet their specific needs.

With the principle of “Quality Parts,Customers Priority,Honest Operation,and Considerate Service”,our business mainly focus on the distribution of electronic components. Line cards we deal with include Microchip,ALPS,ROHM,Xilinx,Pulse,ON,Everlight and Freescale. Main products comprise IC,Modules,Potentiometer,IC Socket,Relay,Connector.Our parts cover such applications as commercial,industrial, and automotives areas.

We are looking forward to setting up business relationship with you and hope to provide you with the best service and solution. Let us make a better world for our industry!



Contact us

Tel: +86-755-8981 8866 Fax: +86-755-8427 6832

Email & Skype: info@chipsmall.com Web: www.chipsmall.com

Address: A1208, Overseas Decoration Building, #122 Zhenhua RD., Futian, Shenzhen, China

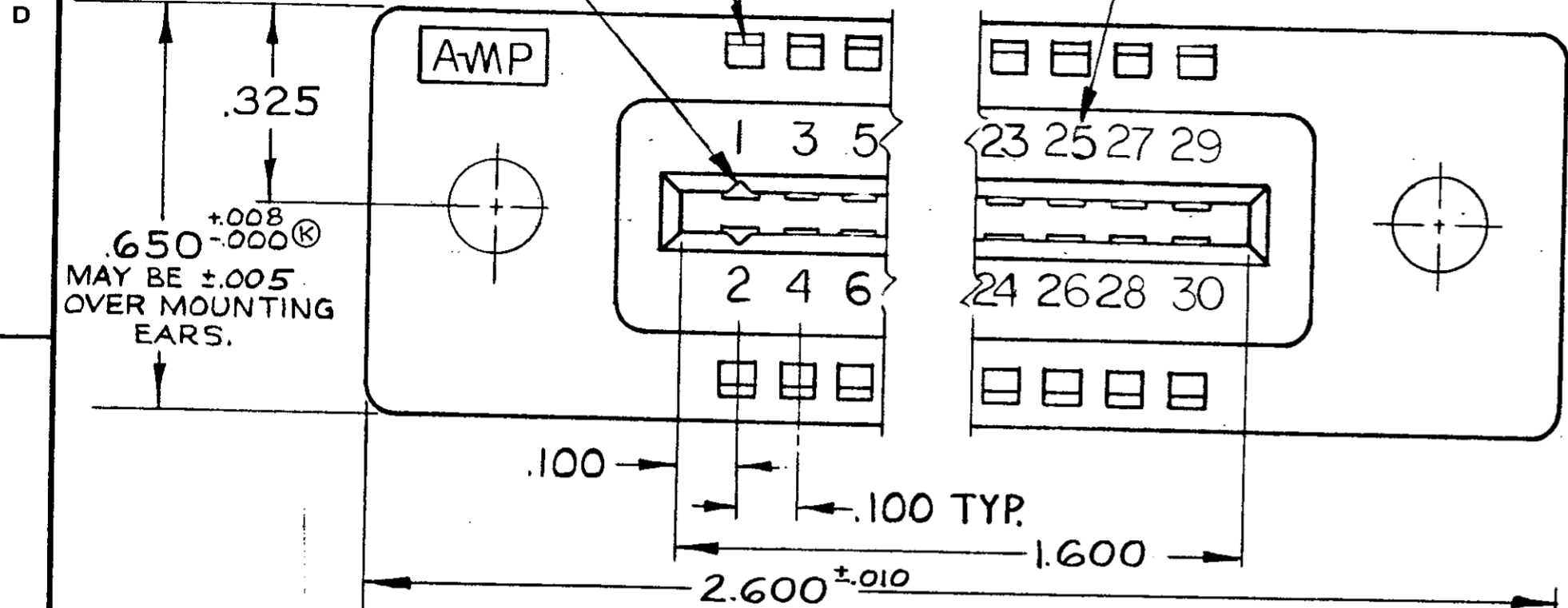


© 1962 BY AMP INCORPORATED. ALL RIGHTS RESERVED. AMP PRODUCTS COVERED BY PATENTS AND/OR PATENTS PENDING. APPROVED PER GOVT CONTRACT NO.

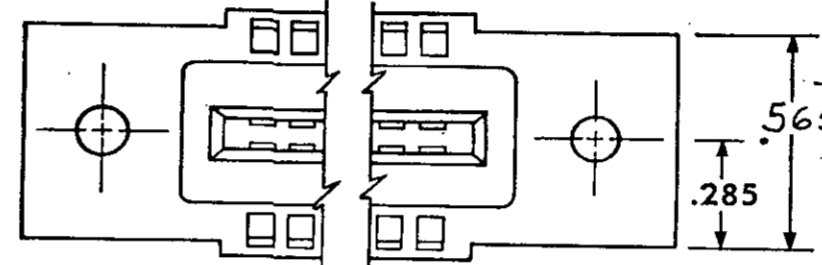
LOCATION FOR AMP-TAB FEMALE CONTACT

CAVITY IDENTIFICATION ON P/N (1) 582585-1 ONLY.

REVISIONS					
ZONE	LTR	DESCRIPTION	DATE	APPROVED	
✓	5	REVISED PER 0600-3683-95	TA	10-95	JWARNER

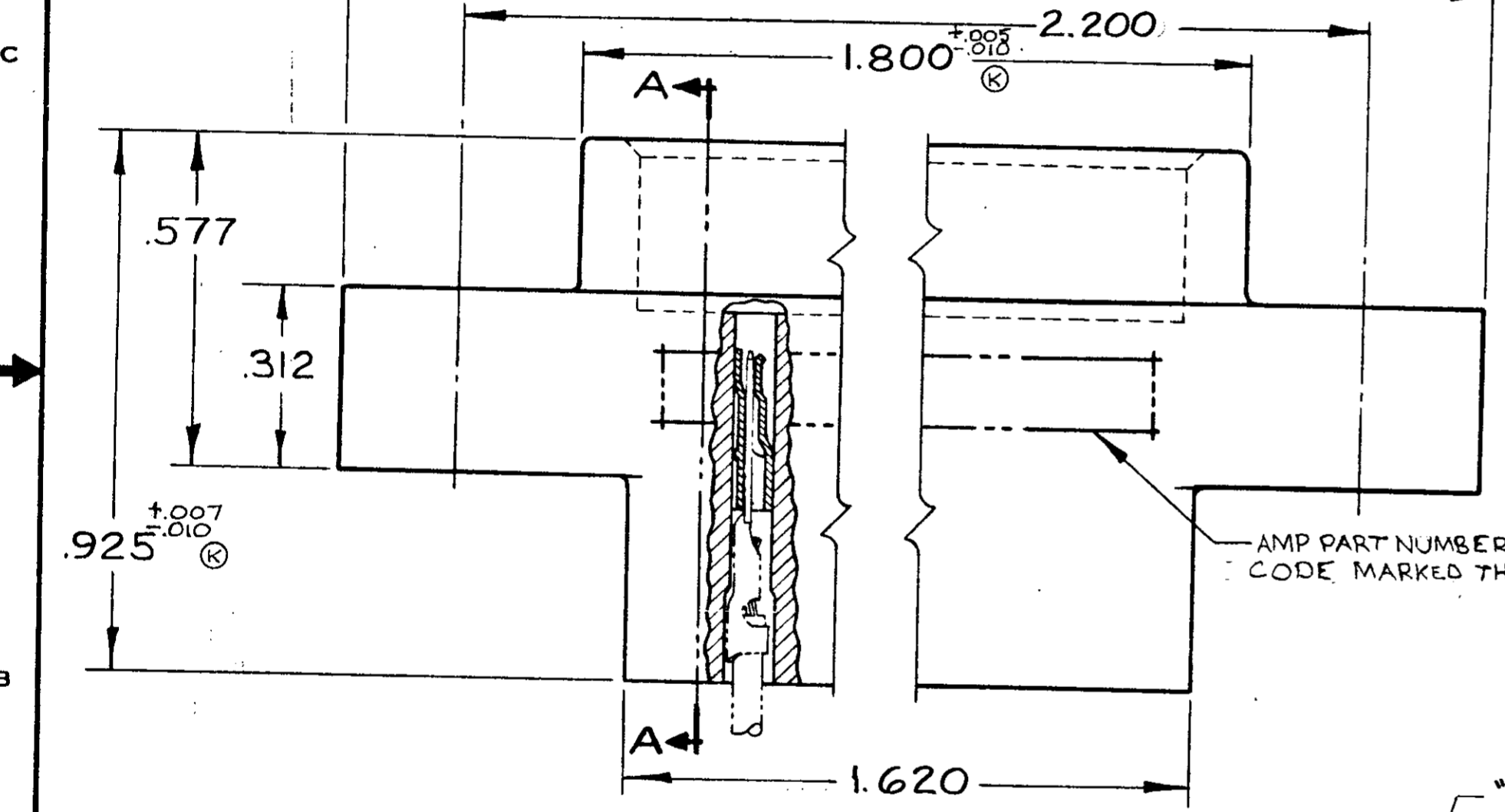


582585-1 1. AS SHOWN "J" DIA. HOLES = .128
 OBSOLETE 582585-2 1. SAME AS 1 EXCEPT.
 2. "J" DIA. HOLES = .156

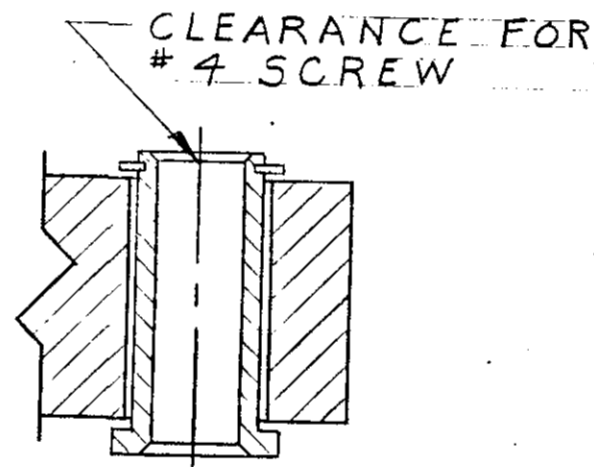


ALTERNATE MOUNTING EAR CONFIGURATION Δ

OBS
~~582585-4 1. SAME AS -1 EXCEPT: FLOATING BUSHINGS~~
 1) 582585-1 1. SAME AS -1 EXCEPT TO HAVE CAVITY IDENT. ON TOP SURFACE OF HOUSING.

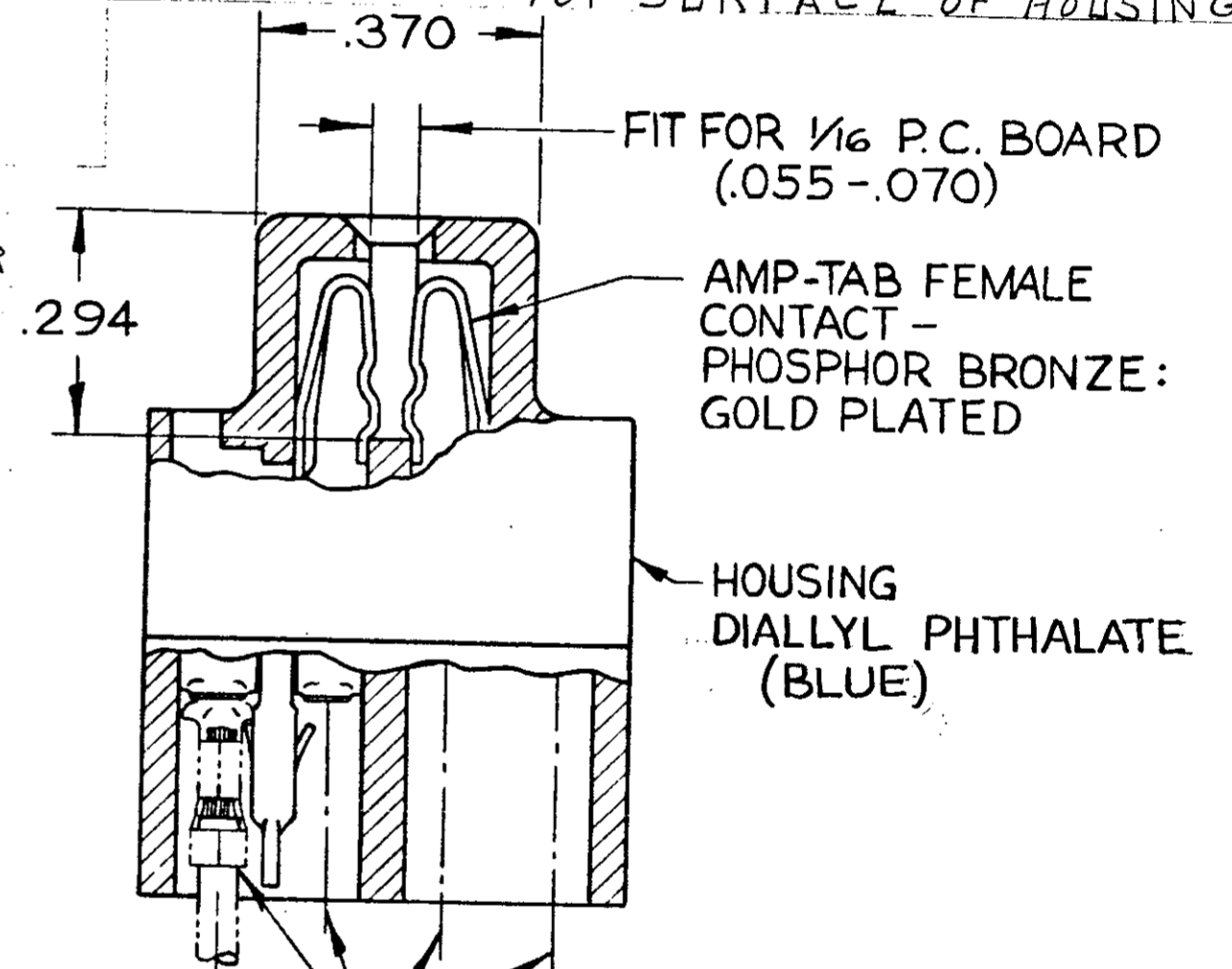


AMP PART NUMBER AND DATE CODE MARKED THIS AREA



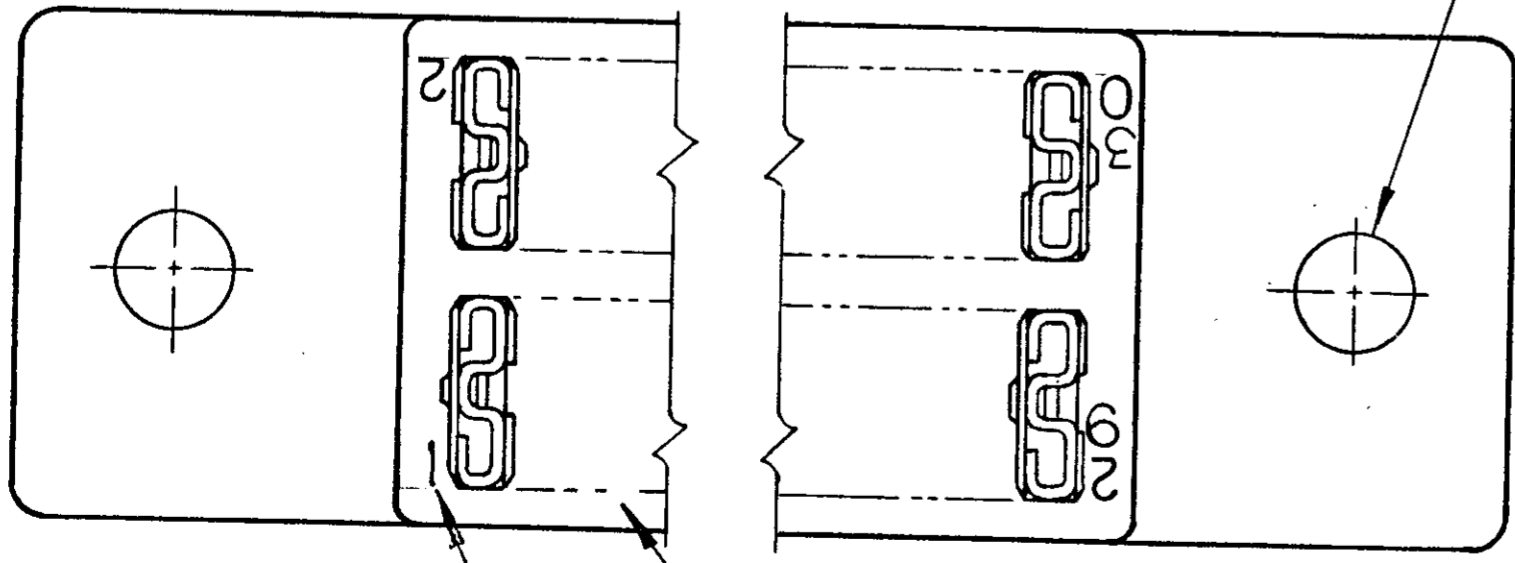
- 4 ONLY

±.003 (M)
 "J" DIA. HOLES



SECTION A-A

- Δ GROOVES FOR "ON CONTACT KEYING" AMP'S OPTION DEPENDING ON METHOD OF MANUFACTURE. FOR "ON CONTACT" KEYING USE KEYING PLUG P/N 583487-1. (MUST BE ORDERED SEPARATELY.)
- Δ MOUNTING EAR CONFIGURATION AMP'S OPTION DEPENDS ON METHOD OF MANUFACTURE.



UNLESS OTHERWISE SPECIFIED DIMENSIONS ARE IN INCHES TOLERANCES ON		CONTRACT NO.		AMP INCORPORATED HARRISBURG, PENNSYLVANIA	
FRACTIONS ±	DECIMALS ±.005	ANGLES ±	DR J. Asick	DATE 12-16-66	AMP TRADEMARK
MATERIAL SEE CALLOUT	HEAT TREAT //		CHK L. Burns	DATE 1-5-67	
FINISH SEE CALLOUT	OTHER APPD		APPD J. Kaufman	DATE 1-11-67	15- POSITION AMP-TAB CONNECTOR .100 CENTERS QUAD
SCALE 4-1		WT	CALC	ACTUAL	
SEE CALLOUT			DSGN APPD R. Showman	DATE 1/10/67	NUMBER 582585
CODE IDENT NO C 00779		NUMBER 582585		SCALE 4-1	

AMP INFO	
LOC DF	PRINT/DIST FO

NUMBER 582585
CUS. 582585