



Chipsmall Limited consists of a professional team with an average of over 10 year of expertise in the distribution of electronic components. Based in Hongkong, we have already established firm and mutual-benefit business relationships with customers from,Europe,America and south Asia,supplying obsolete and hard-to-find components to meet their specific needs.

With the principle of “Quality Parts,Customers Priority,Honest Operation,and Considerate Service”,our business mainly focus on the distribution of electronic components. Line cards we deal with include Microchip,ALPS,ROHM,Xilinx,Pulse,ON,Everlight and Freescale. Main products comprise IC,Modules,Potentiometer,IC Socket,Relay,Connector.Our parts cover such applications as commercial,industrial, and automotives areas.

We are looking forward to setting up business relationship with you and hope to provide you with the best service and solution. Let us make a better world for our industry!



Contact us

Tel: +86-755-8981 8866 Fax: +86-755-8427 6832

Email & Skype: info@chipsmall.com Web: www.chipsmall.com

Address: A1208, Overseas Decoration Building, #122 Zhenhua RD., Futian, Shenzhen, China



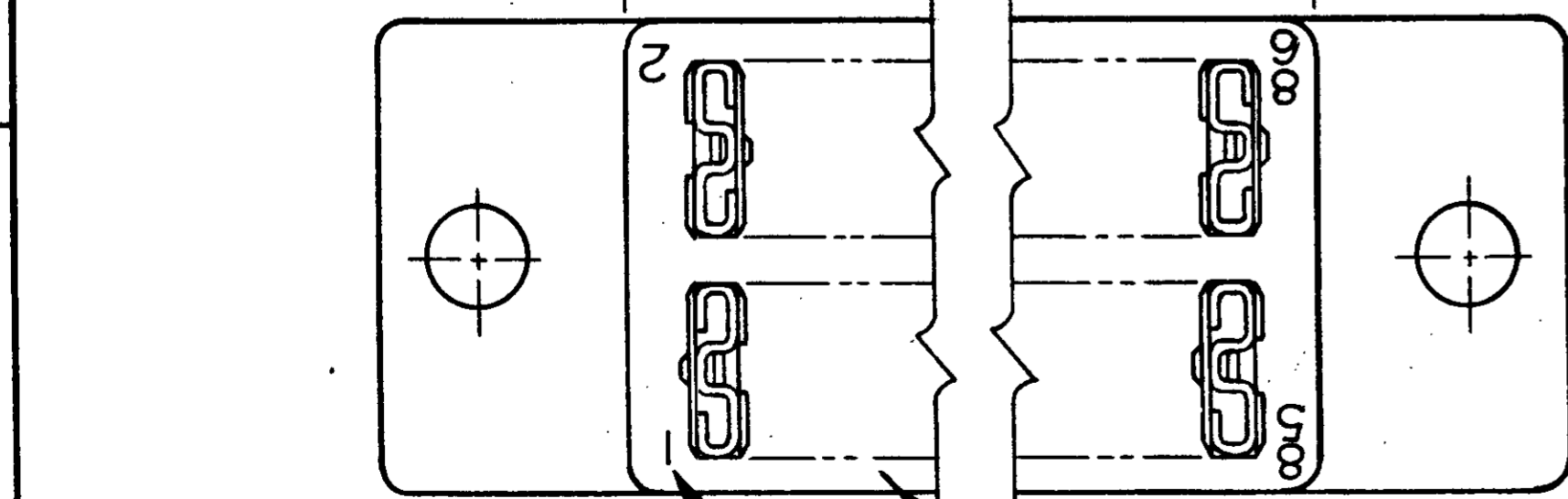
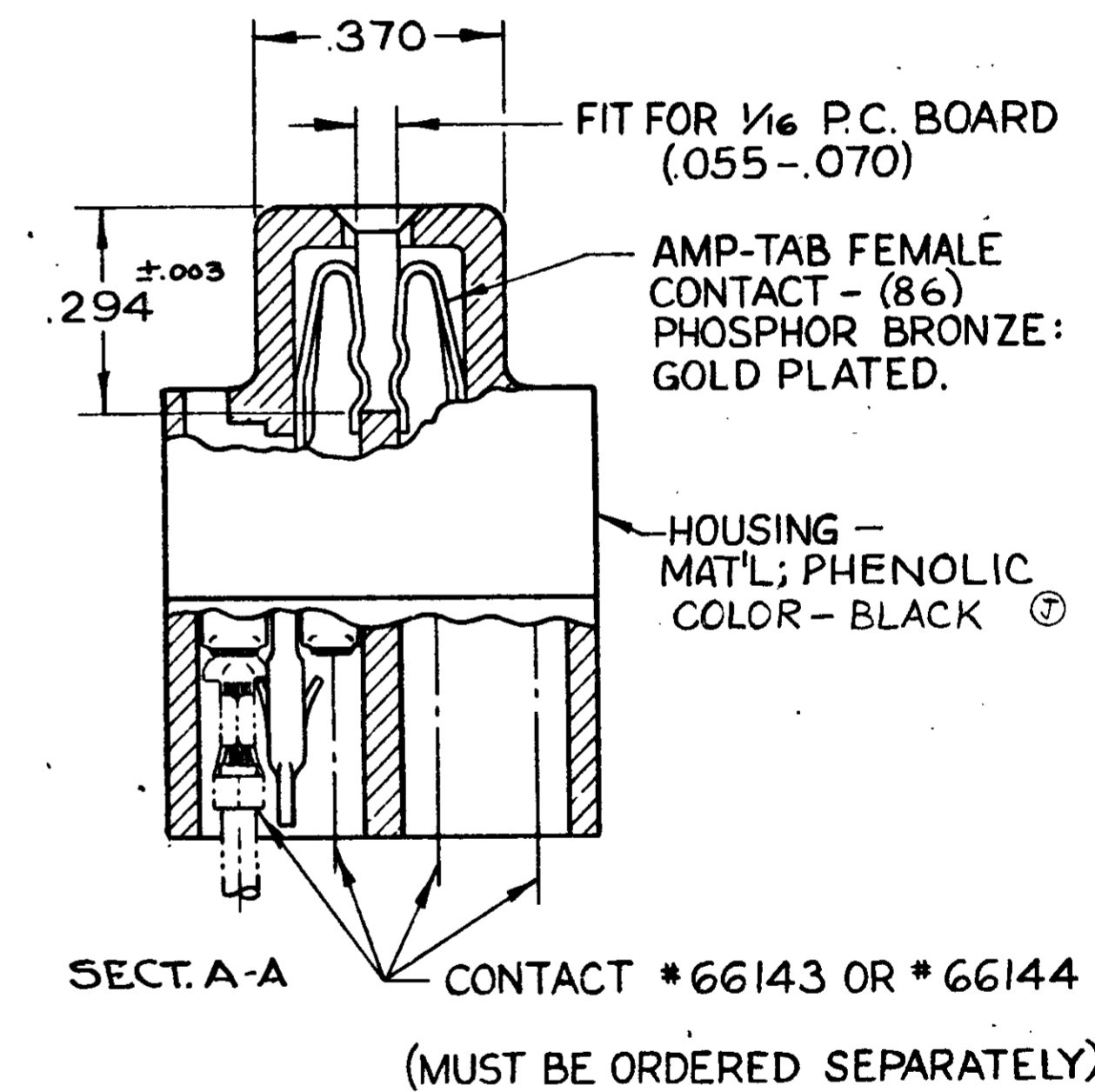
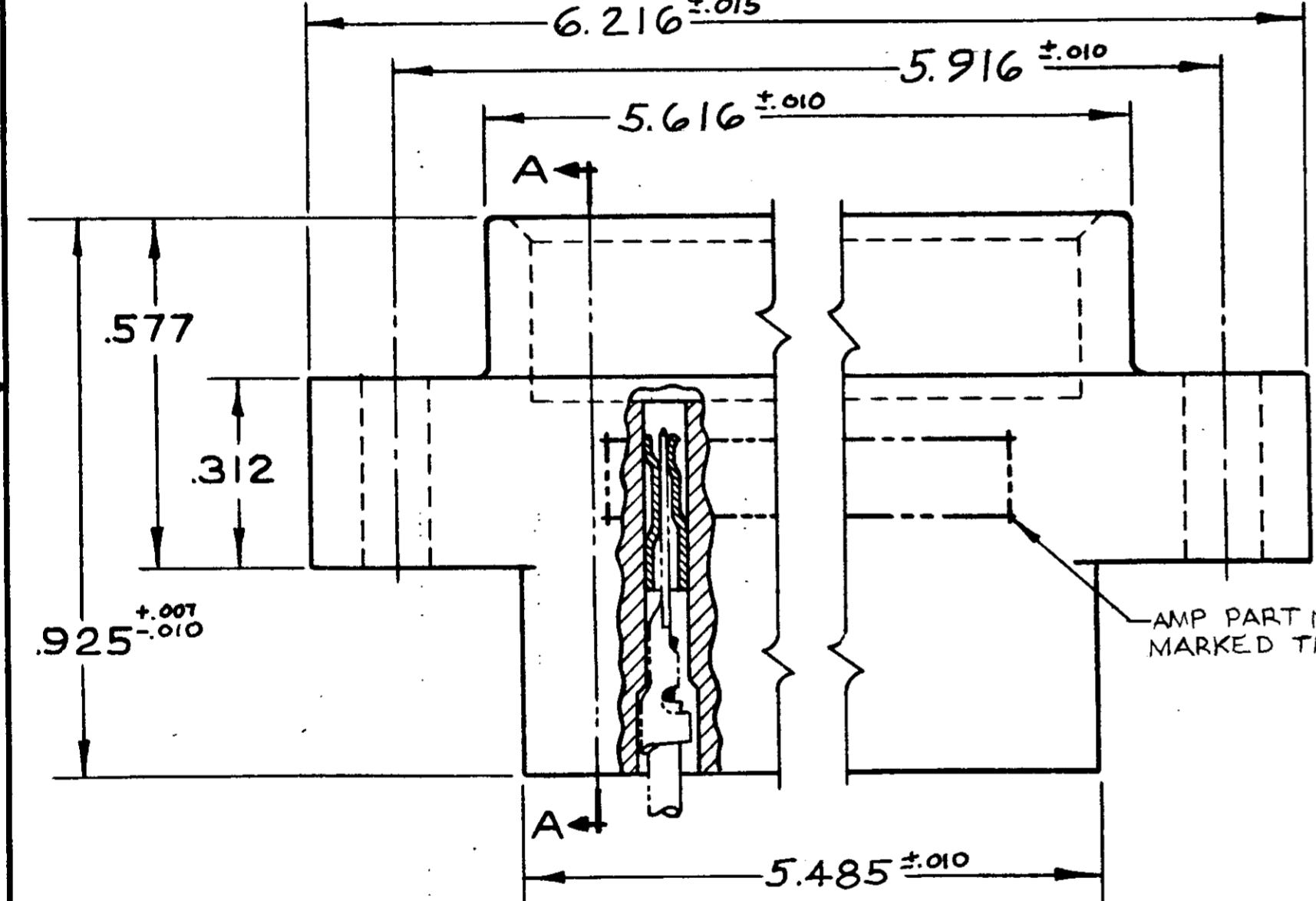
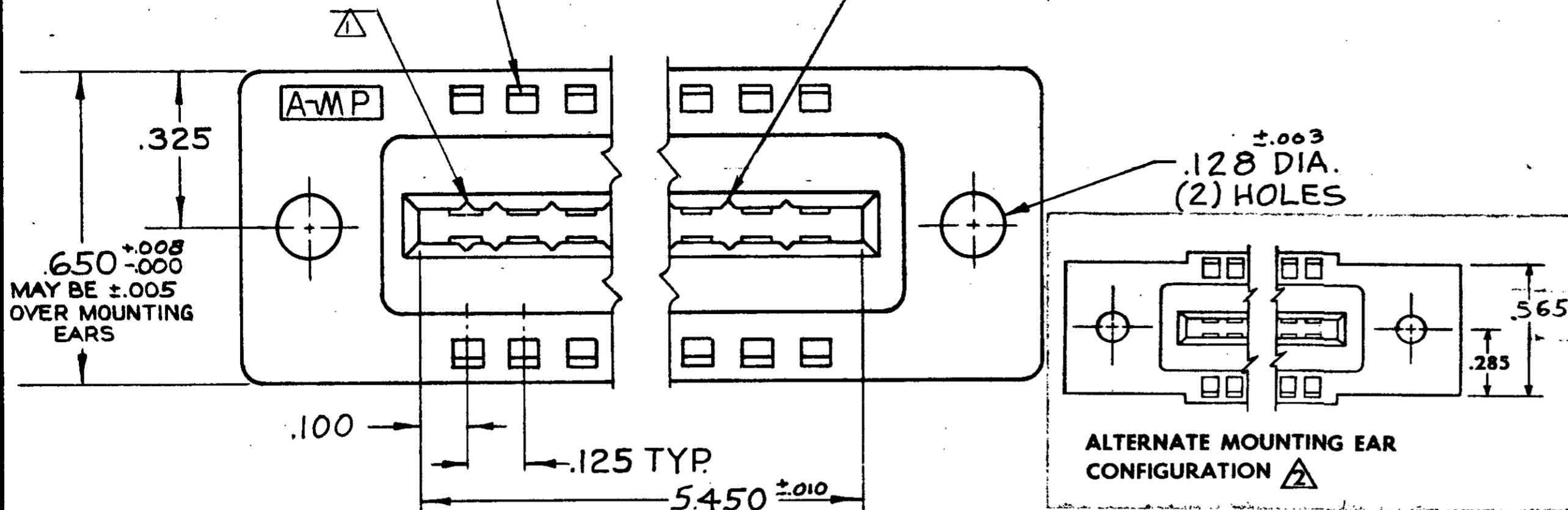
© 1964 BY AMP INCORPORATED. ALL RIGHTS RESERVED. AMP PRODUCTS COVERED BY PATENTS AND/OR PATENTS PENDING. APPROVED PER GOVT CONTRACT NO.

LOCATION FOR AMP-TAB FEMALE CONTACT

LOCATION FOR KEYING PLUG 582501 -1 (FOR INTER-CONTACT KEYING)

| REVISIONS | | | | |
|-----------|-----|---|---------|-----------|
| ZONE | LTR | DESCRIPTION | DATE | APPROVED |
| G | | REDRAWN 1/2 CHANGE, WAS SHOWN ON DWG. 582714-ECN 1265 | 3-13-67 | JA D.H. |
| H | | REVISED ECN 2334 | 6-11-70 | D.H. |
| J | | REVISED 2334 AMEND. #1 | 9-3-70 | D.H. |
| K | | REVISED 6126 M.S. | 7-26-79 | |
| L | | REVISED 8294 M.S. | 1-83 | |
| M | | REVISED PER 0600-3683-95 TA | 10-95 | J. WARNER |
| N | | ECO-08-020973 | 11-08 | JW |

582726-1 I. AS SHOWN.



▲ GROOVES FOR "ON CONTACT KEYING" AMP'S OPTION DEPENDING ON METHOD OF MANUFACTURE FOR "ON CONTACT" KEYING USE KEYING PLUG P/N 583487-1. (MUST BE ORDERED SEPARATELY.)
 ▲ MOUNTING EAR CONFIGURATION AMP'S OPTION DEPENDS ON METHOD OF MANUFACTURE.

| | | | | | |
|---|-------------------|--------------|-------------------------|--|---|
| UNLESS OTHERWISE SPECIFIED DIMENSIONS ARE IN INCHES TOLERANCES ON | | CONTRACT NO. | | AMP INCORPORATED HARRISBURG, PENNSYLVANIA | |
| FRACTIONS ± | DECIMALS ±.005 | ANGLES ± | DR g. asich | DATE 3-13-67 | AMP TRADEMARK |
| MATERIAL SEE CALLOUT | | | CHK S.S. Heide | DATE 3/21/67 | NAME 43 POSITION AMP-TAB CONNECTOR .125 CENTERS QUAD |
| HEAT TREAT — | | | DSGN ENGR R. Showman | DATE 3/21/67 | |
| FINISH SEE CALLOUT | | | APPD S. Kaufman | DATE 3/21/67 | SIZE C |
| | | | OTHER APPD | | CODE IDENT NO 00779 |
| | | | | | NUMBER 582726 |
| | | | | | REV N |
| | | | | | SCALE 4 - 1 |
| | | | | | WT CALC ACTUAL SHEET |

3. LASER MARKING ACCEPTABLE FOR ALL MARKING

AMP INFO
LOC PRINT DIST
DF FQ

NUMBER
CUS. 582726