



Chipsmall Limited consists of a professional team with an average of over 10 year of expertise in the distribution of electronic components. Based in Hongkong, we have already established firm and mutual-benefit business relationships with customers from,Europe,America and south Asia,supplying obsolete and hard-to-find components to meet their specific needs.

With the principle of “Quality Parts,Customers Priority,Honest Operation,and Considerate Service”,our business mainly focus on the distribution of electronic components. Line cards we deal with include Microchip,ALPS,ROHM,Xilinx,Pulse,ON,Everlight and Freescale. Main products comprise IC,Modules,Potentiometer,IC Socket,Relay,Connector.Our parts cover such applications as commercial,industrial, and automotives areas.

We are looking forward to setting up business relationship with you and hope to provide you with the best service and solution. Let us make a better world for our industry!



Contact us

Tel: +86-755-8981 8866 Fax: +86-755-8427 6832

Email & Skype: info@chipsmall.com Web: www.chipsmall.com

Address: A1208, Overseas Decoration Building, #122 Zhenhua RD., Futian, Shenzhen, China

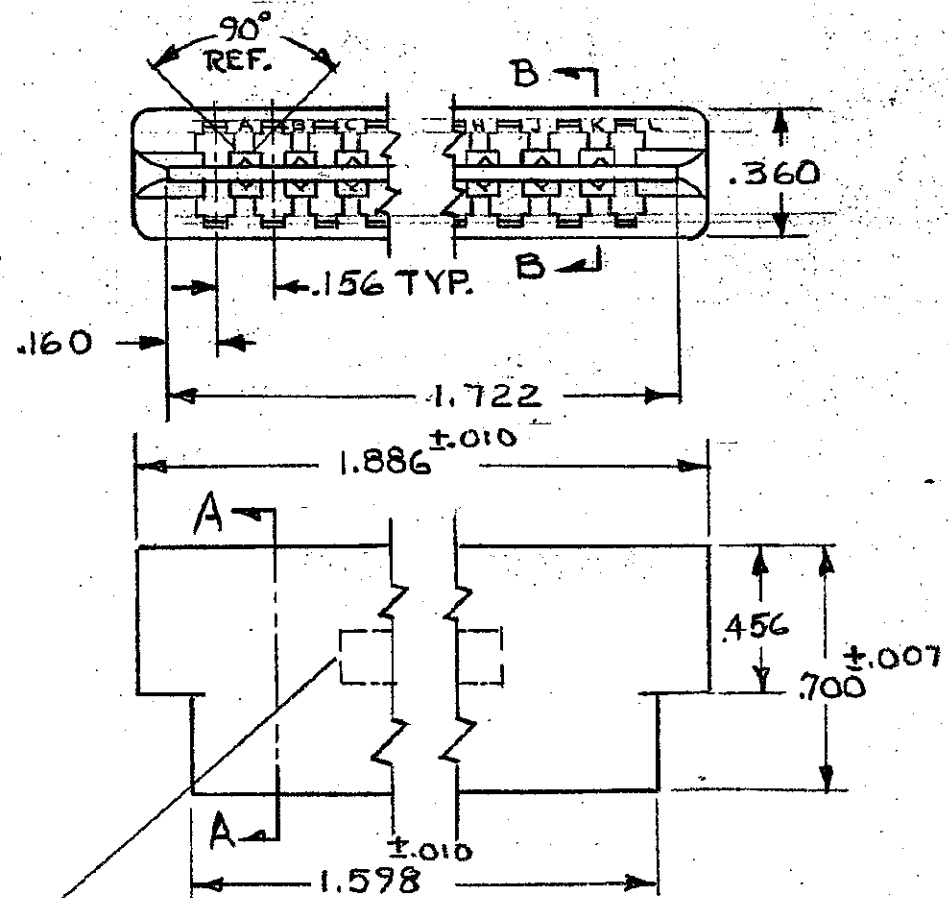


NUMBER 583280

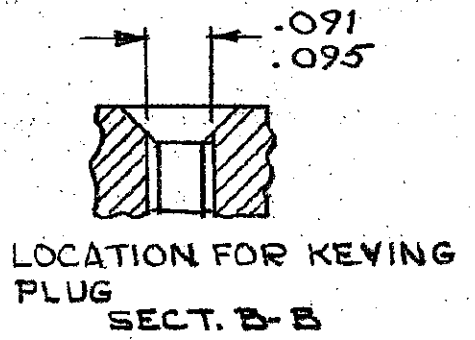
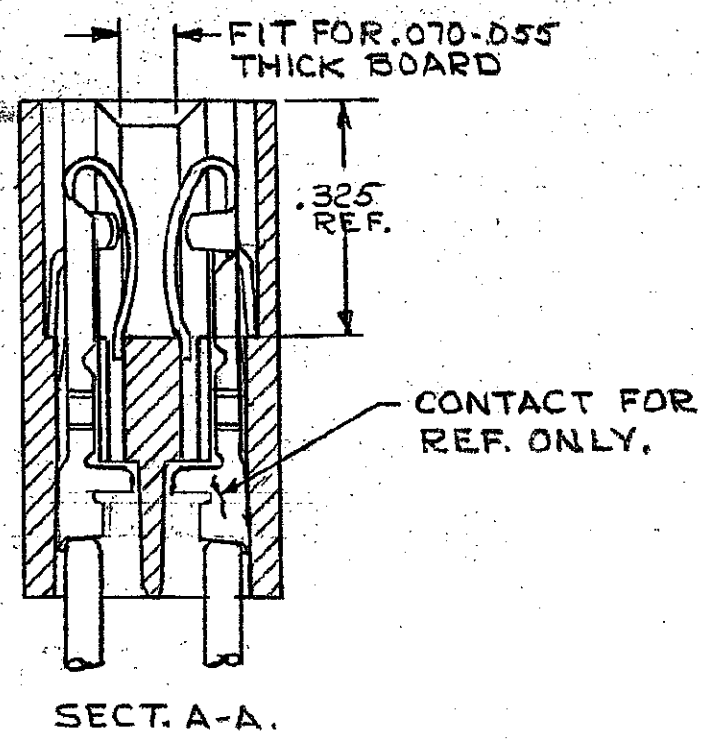
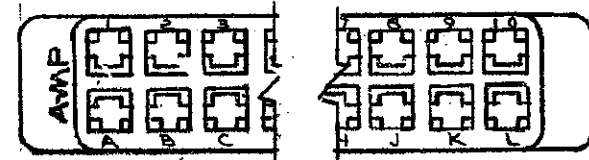
©1967 BY AMP INCORPORATED. ALL RIGHTS RESERVED. AMP PRODUCTS COVERED BY PATENTS AND/OR PATENTS PENDING.

583280-1, I. AS SHOWN

ZONE		LTR	DESCRIPTION	DATE	APPROVED
		0	RELEASED WAS 5112-162 (CERM)	5-9-67	J.H.
✓		A	REV PER EC 0320-349-97	24 NOV 97	NS



"A-MP" PART. NO. & DATE CODE THIS AREA.



C

B

A

UNLESS OTHERWISE SPECIFIED DIM. ARE IN INCHES. TOLERANCES ON DECIMALS ±.005 ANGLES ± #		CONTRACT NO.		AMP INCORPORATED HARRISBURG, PENNSYLVANIA	
MATERIAL PHENOLIC		DR Thunble 3-28-67		NAME 10 POS. AMP LEAF HOUSING WITHOUT MOUNTING EARS.	
HEAT TREAT H		CHK J.S. Heide 5/9/67		SIZE B	
FINISH BLACK		APPD J. Kaufman 5/9/67		CODE IDENT NO. 00779	
LOC FI		PRINT DIST 01/22		NUMBER 583280	
OTHER APPD R. Shawna 5/10/67		SCALE 2:1		WT. CALC. ACTUAL SHEET 1 OF 1	

CUSTOMER DRAWING