



Chipsmall Limited consists of a professional team with an average of over 10 year of expertise in the distribution of electronic components. Based in Hongkong, we have already established firm and mutual-benefit business relationships with customers from,Europe,America and south Asia,supplying obsolete and hard-to-find components to meet their specific needs.

With the principle of “Quality Parts,Customers Priority,Honest Operation,and Considerate Service”,our business mainly focus on the distribution of electronic components. Line cards we deal with include Microchip,ALPS,ROHM,Xilinx,Pulse,ON,Everlight and Freescale. Main products comprise IC,Modules,Potentiometer,IC Socket,Relay,Connector.Our parts cover such applications as commercial,industrial, and automotives areas.

We are looking forward to setting up business relationship with you and hope to provide you with the best service and solution. Let us make a better world for our industry!



Contact us

Tel: +86-755-8981 8866 Fax: +86-755-8427 6832

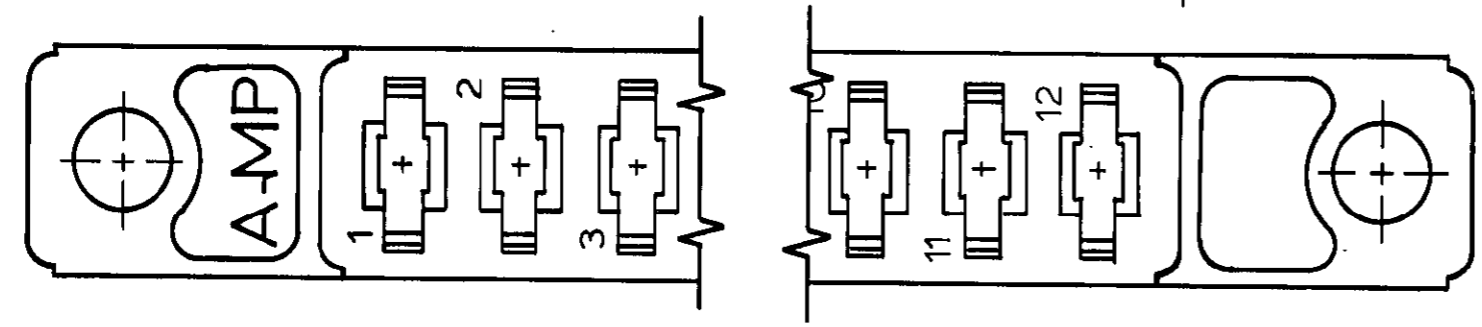
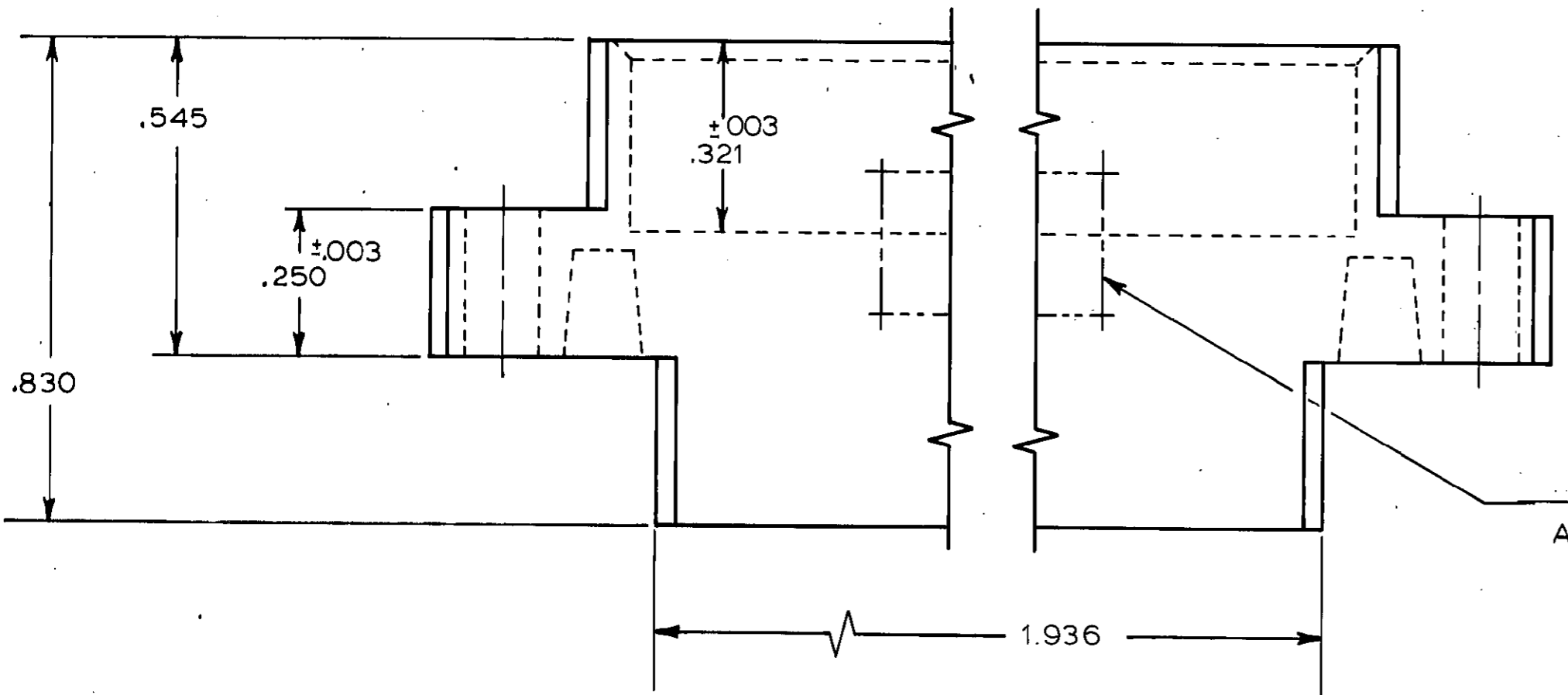
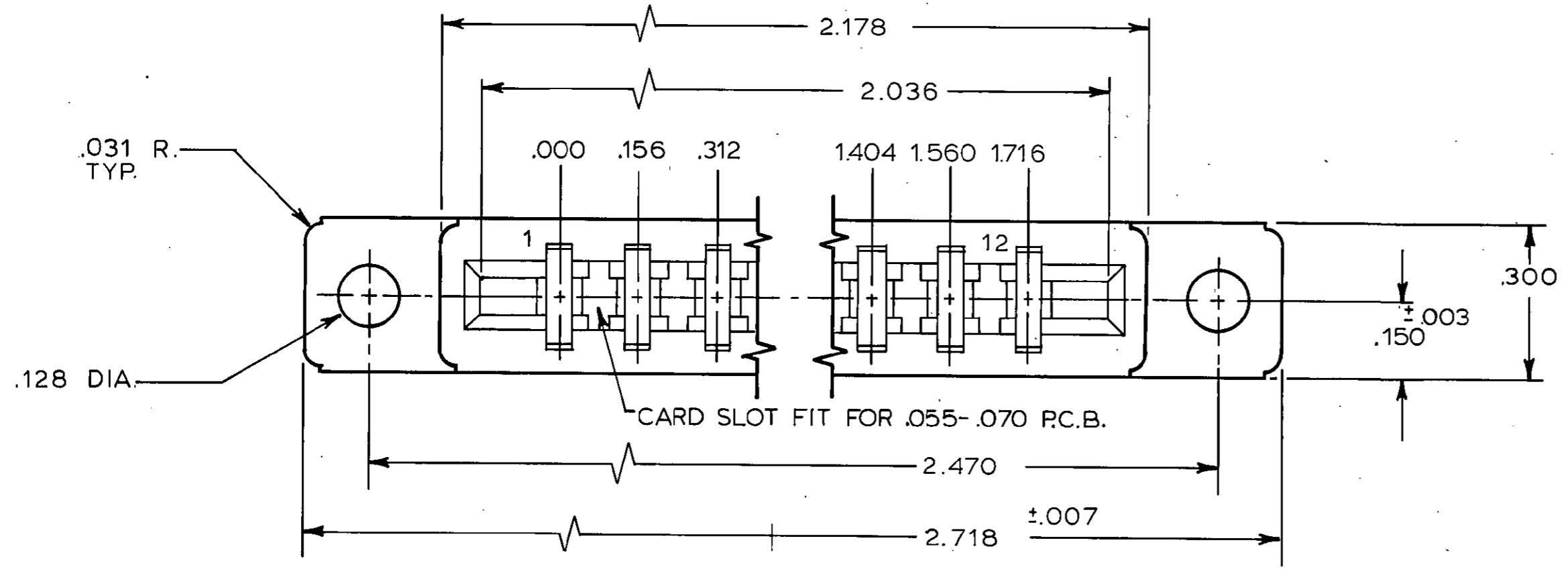
Email & Skype: info@chipsmall.com Web: www.chipsmall.com

Address: A1208, Overseas Decoration Building, #122 Zhenhua RD., Futian, Shenzhen, China



THIS DRAWING IS UNPUBLISHED. RELEASED FOR PUBLICATION NOVEMBER 8, 1967.
 © COPYRIGHT 1967 BY AMP INCORPORATED, HARRISBURG, PA. ALL INTERNATIONAL RIGHTS RESERVED. AMP PRODUCTS MAY BE COVERED BY U.S. AND FOREIGN PATENTS AND/OR PATENTS PENDING.

REVISIONS						
P	F	ZONE	LTR	DESCRIPTION	DATE	APPROVED
✓	✓		F1	REDWN/AD0314	SR 5/4/84	HW Rose
			G	REDRAWN PER COIO-1301-94	11/3/94	56
			H	REV PER EC.0G3C-233-01	08OCT01	MM



1. USE ON CONTACT KEYING PLUG NO. 583283-1
2. USE CONTACT NO. 583259
3. GLASS FILLED NYLON, COLOR: BLACK, OR GLASS FILLED POLYESTER, COLOR: BLACK.

583300 -1		AS SHOWN	
CODE IDENT	DWG SIZE	PART NO OR IDENTIFYING NO	NOMENCLATURE OR DESCRIPTION
QTY REQD PER ASSY		REVISION OF EACH ASSY NO (WHEN BLANK, USE DWG REVISION)	
UNLESS OTHERWISE SPECIFIED DIMENSIONS ARE IN INCHES.		PARTS LIST	
TOLERANCES ON: DECIMALS ±.005 ANGLES ±		CONTRACT NO	
MATERIAL		DR <i>S. Roycroft 5-4-84</i>	
FINISH		CHK <i>HW Rose 5/30/84</i>	
OTHER APPD		APPD <i>Howard W Rose 5/31/84</i>	
NAME		AMP AMP INCORPORATED Harrisburg, Pa. 17105	
SIZE		DRAWING NO	
SCALE 4:1		C 00779 583300	
SHEET 1 OF 1		CUSTOMER DRAWING	