

Chipsmall Limited consists of a professional team with an average of over 10 year of expertise in the distribution of electronic components. Based in Hongkong, we have already established firm and mutual-benefit business relationships with customers from,Europe,America and south Asia,supplying obsolete and hard-to-find components to meet their specific needs.

With the principle of “Quality Parts,Customers Priority,Honest Operation,and Considerate Service”,our business mainly focus on the distribution of electronic components. Line cards we deal with include Microchip,ALPS,ROHM,Xilinx,Pulse,ON,Everlight and Freescale. Main products comprise IC,Modules,Potentiometer,IC Socket,Relay,Connector.Our parts cover such applications as commercial,industrial, and automotives areas.

We are looking forward to setting up business relationship with you and hope to provide you with the best service and solution. Let us make a better world for our industry!



## Contact us

Tel: +86-755-8981 8866 Fax: +86-755-8427 6832

Email & Skype: info@chipsmall.com Web: www.chipsmall.com

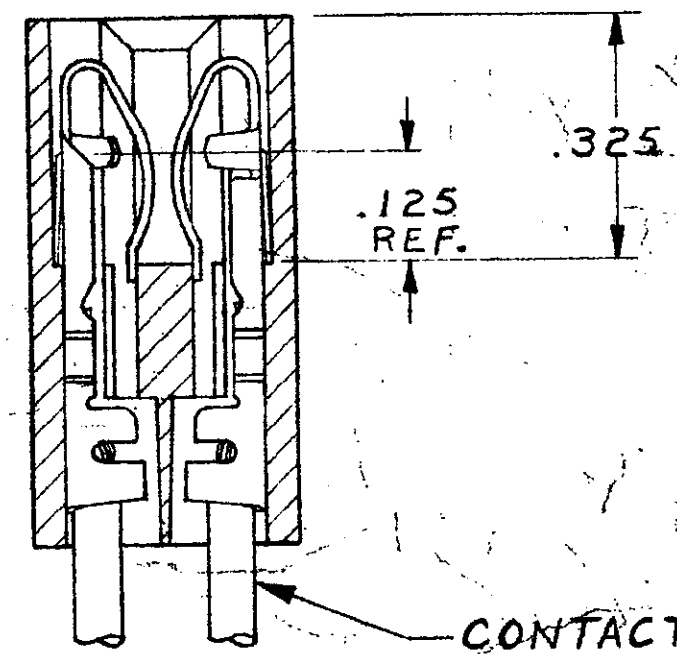
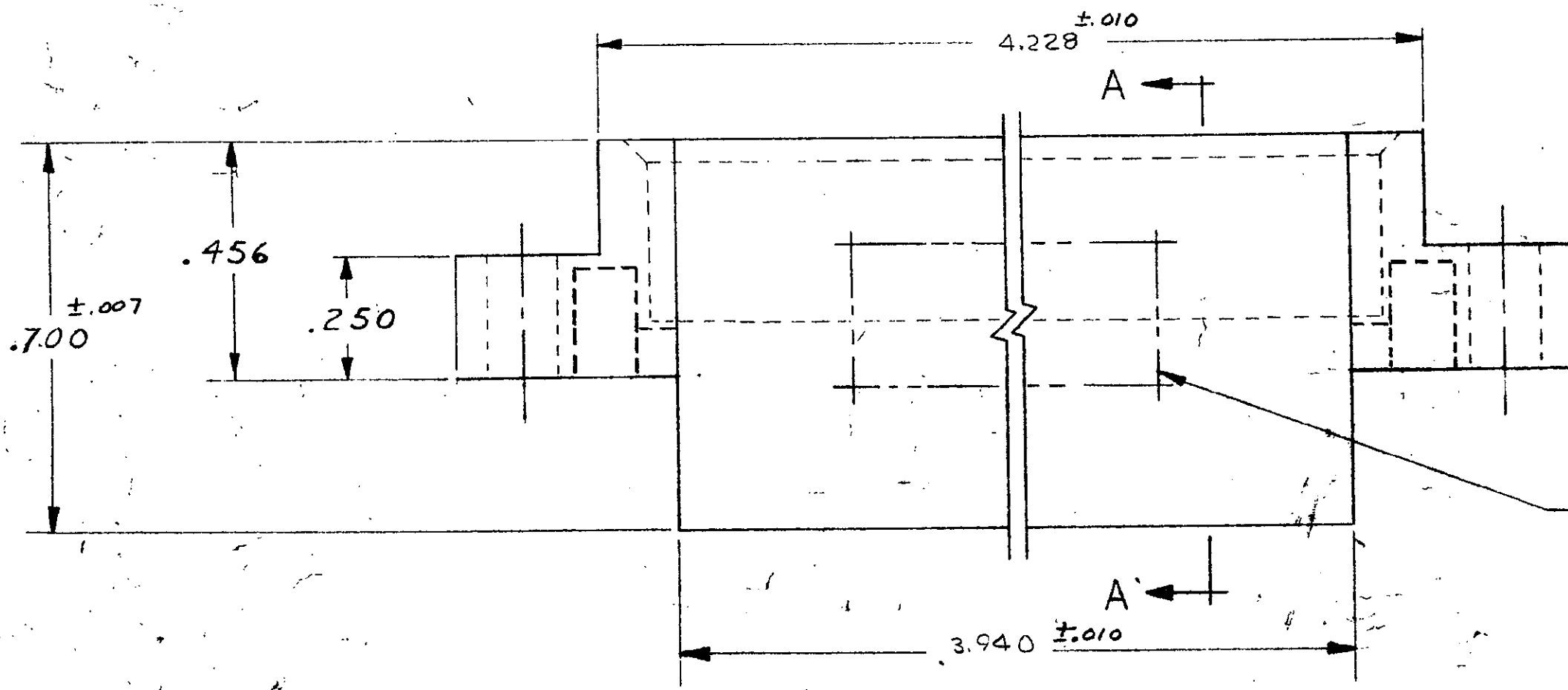
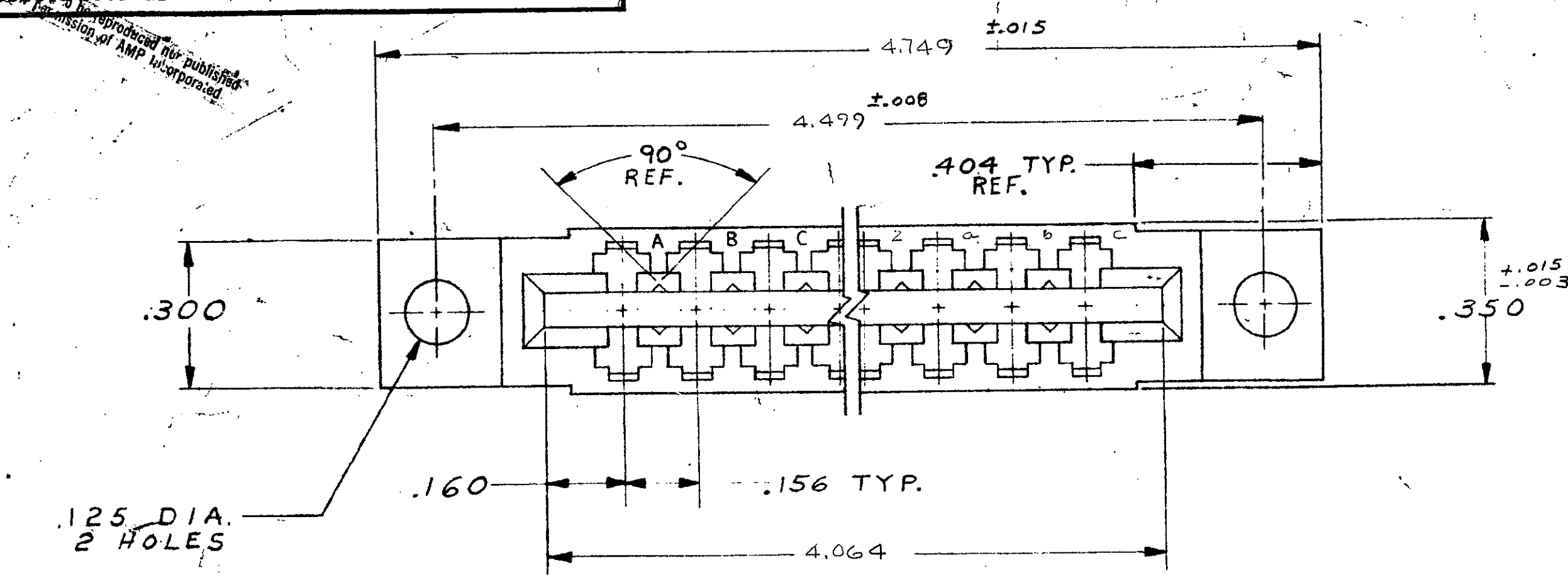
Address: A1208, Overseas Decoration Building, #122 Zhenhua RD., Futian, Shenzhen, China

DRAWING MADE IN AMERICAN PROJECTION

ALL RIGHTS RESERVED. AMP  
COVERED BY PATENTS AND OR PATENTS PENDING.

REVISIONS				
ZONE	LTR	DESCRIPTION	DATE	APPROVED
A		REVISED MAT'L 4657 DR	1-9-76	DR
B		REV PER ADO70Z	5/14/85	CP/...
C		REV PER AD 3180	1189	W/HUR
D		REV PER 0010-0337-95	10-17-95	P.B./
E		REV PER EL 0320-349-97	25 NOV 97	NS

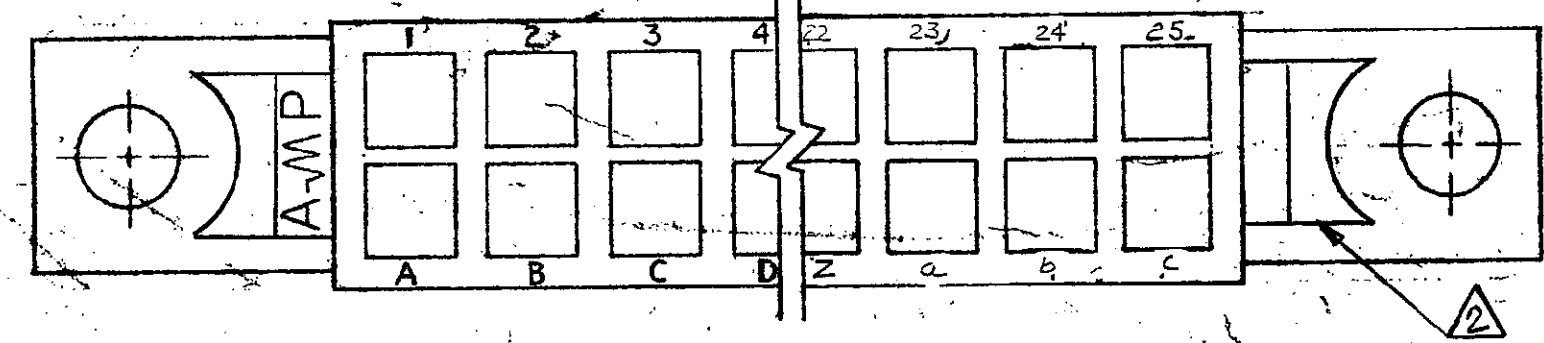
583726-1 I. AS SHOWN



AMP, PART NO. &  
DATE CODE HOT STAMPED  
IN THIS APPROX. AREA.  
PER 115-9009

CONTACTS SHOWN  
FOR REF. ONLY.

SECT. A-A



1. .055-.070 P.C. BOARD THICKNESS.  
 2. VOID CORING PERMISSIBLE AT AMP'S OPTION REF. ONLY.

UNLESS OTHERWISE SPECIFIED, DIMENSIONS ARE IN INCHES TOLERANCES ON: DECIMALS ± .005 ANGLES ±	CONTRACT NO.	AMP INCORPORATED HARRISBURG, PENNSYLVANIA		
	DR <i>Gumble</i> 5-3271			NAME HOUSING, AMP LEAF 2.5 POSITION, DUAL
MATERIAL GLASS FILLED NYLON OR POLYESTER COLOR: BLACK	CHK <i>J.S. Heide</i> 5/4/71	SIZE C	CODE IDENT NO. 00779	NUMBER 583726
	APPD <i>Kaufman</i> 5/4/71	OTHER APPD	SCALE 4-1	SHEET / OF /