



Chipsmall Limited consists of a professional team with an average of over 10 year of expertise in the distribution of electronic components. Based in Hongkong, we have already established firm and mutual-benefit business relationships with customers from,Europe,America and south Asia,supplying obsolete and hard-to-find components to meet their specific needs.

With the principle of "Quality Parts,Customers Priority,Honest Operation,and Considerate Service",our business mainly focus on the distribution of electronic components. Line cards we deal with include Microchip,ALPS,ROHM,Xilinx,Pulse,ON,Everlight and Freescale. Main products comprise IC,Modules,Potentiometer,IC Socket,Relay,Connector.Our parts cover such applications as commercial,industrial, and automotives areas.

We are looking forward to setting up business relationship with you and hope to provide you with the best service and solution. Let us make a better world for our industry!



## Contact us

Tel: +86-755-8981 8866 Fax: +86-755-8427 6832

Email & Skype: info@chipsmall.com Web: www.chipsmall.com

Address: A1208, Overseas Decoration Building, #122 Zhenhua RD., Futian, Shenzhen, China





**BOARD LEVEL COOLING – Plug In 5912**

Plug In 5912 is a series of plug in channel board level heat sinks designed to cool TO-220, TO-220-single gauge, and TO-262 devices. Representative image only.

**ORDERING INFORMATION**

Part Number	Device Type
591202B00000G	TO-220, TO-220-single gauge, TO-262
591202B03100G	TO-220, TO-220-single gauge, TO-262
591202B03700G	TO-220, TO-220-single gauge
591202B04000G	TO-220, TO-220-single gauge, TO-262



**HEAT SINK DETAILS**

Property	Details
Material	Aluminum
Finish	Black Anodize
Device Attachment Options	Integrated Spring Action Clips
Thermal Interface Material	-

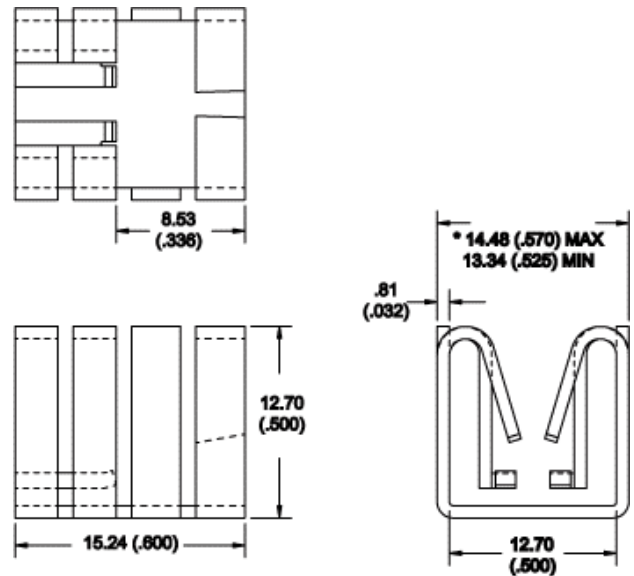
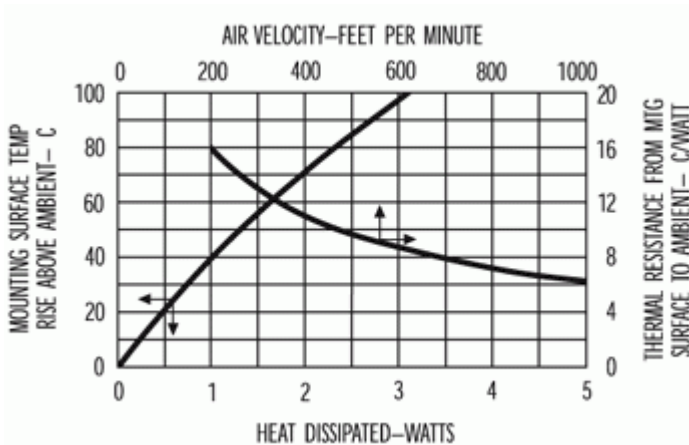
Property	Details
Heat Sink Width (mm)	12.70
Heat Sink Length (mm)	15.24
Heat Sink Height (mm)	14.48
Heat Sink Mounting Direction	Horizontal, Vertical

**MECHANICAL & PERFORMANCE**

Drawing dimensions are shown in mm, (in)

Part Number	"Y" Dim	"Z" Dim
591202B00000G	-	-
591202B03100G	8.28 (0.326)	1.73 (0.068)
591202B03700G	0.56 (0.022)	1.91 (0.075)
591202B04000G	0.41 (0.016)	1.75 (0.069)

Part Number: 591202B00000G

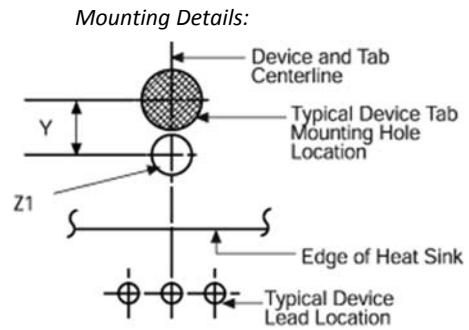
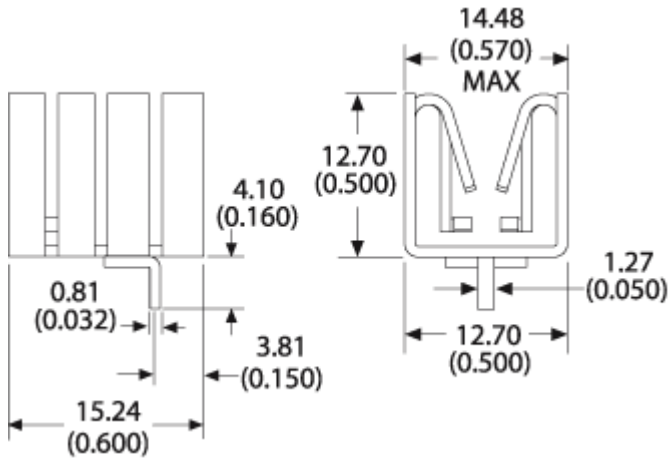


NOTES:  
1. \* DENOTES CRITICAL DIMENSION.

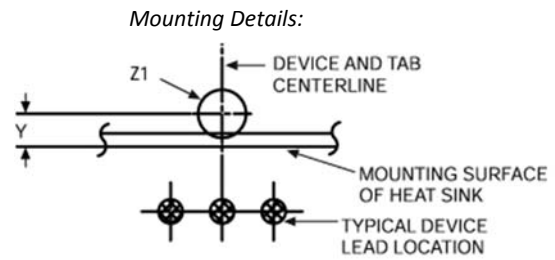
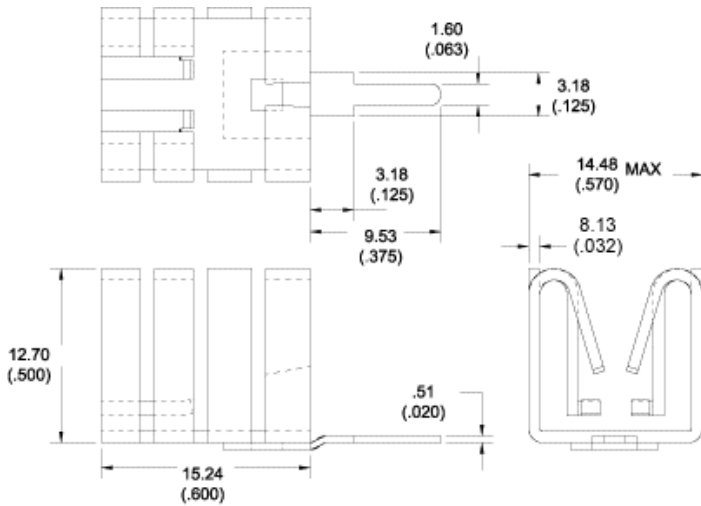


# Board Level Cooling – Plug In 5912

Part Number: 591202B03100G



Part Number: 591202B03700G



Part Number: 591202B04000G

