



Chipsmall Limited consists of a professional team with an average of over 10 year of expertise in the distribution of electronic components. Based in Hongkong, we have already established firm and mutual-benefit business relationships with customers from,Europe,America and south Asia,supplying obsolete and hard-to-find components to meet their specific needs.

With the principle of “Quality Parts,Customers Priority,Honest Operation,and Considerate Service”,our business mainly focus on the distribution of electronic components. Line cards we deal with include Microchip,ALPS,ROHM,Xilinx,Pulse,ON,Everlight and Freescale. Main products comprise IC,Modules,Potentiometer,IC Socket,Relay,Connector.Our parts cover such applications as commercial,industrial, and automotives areas.

We are looking forward to setting up business relationship with you and hope to provide you with the best service and solution. Let us make a better world for our industry!



Contact us

Tel: +86-755-8981 8866 Fax: +86-755-8427 6832

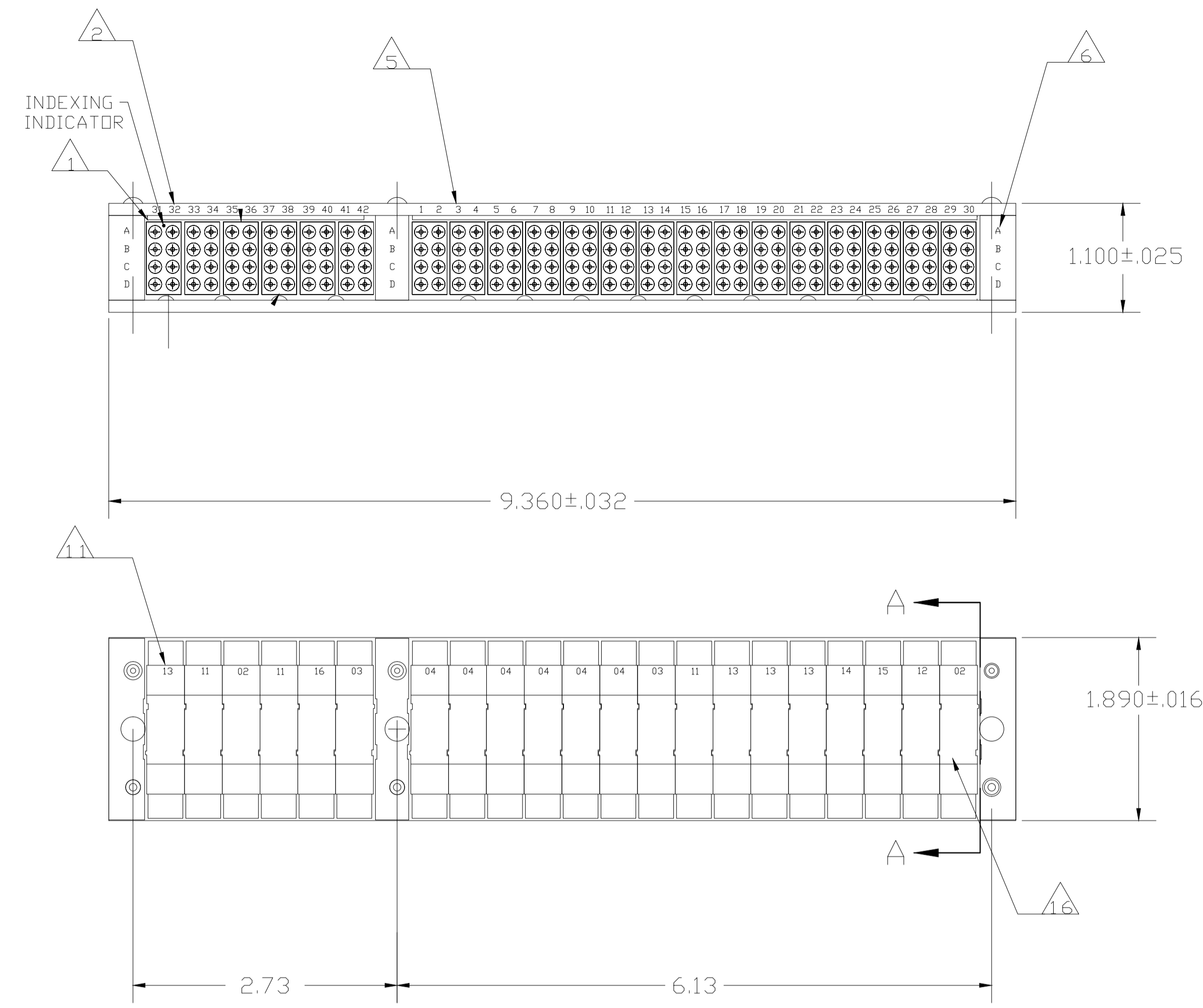
Email & Skype: info@chipsmall.com Web: www.chipsmall.com

Address: A1208, Overseas Decoration Building, #122 Zhenhua RD., Futian, Shenzhen, China

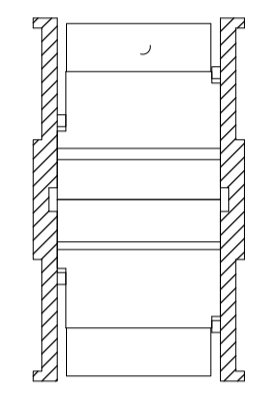


THIS DRAWING IS UNPUBLISHED.	RELEASED FOR PUBLICATION	9-00, 9-16-00
DESCRIPTION	AMP PART NO.	MIL PART NO.
CONTACT	1-592404-1	M39029/1-102
SEALING PLUG	592104-2	MS27488-16
INS/EXT TOOL	592155-1	M81969/14-03

LOC	DIST	REV	DESCRIPTION	DATE	DWN	APVD
DF	AO	C	REVISED PER ECO-14-013776	10NDV14	MGM	CT

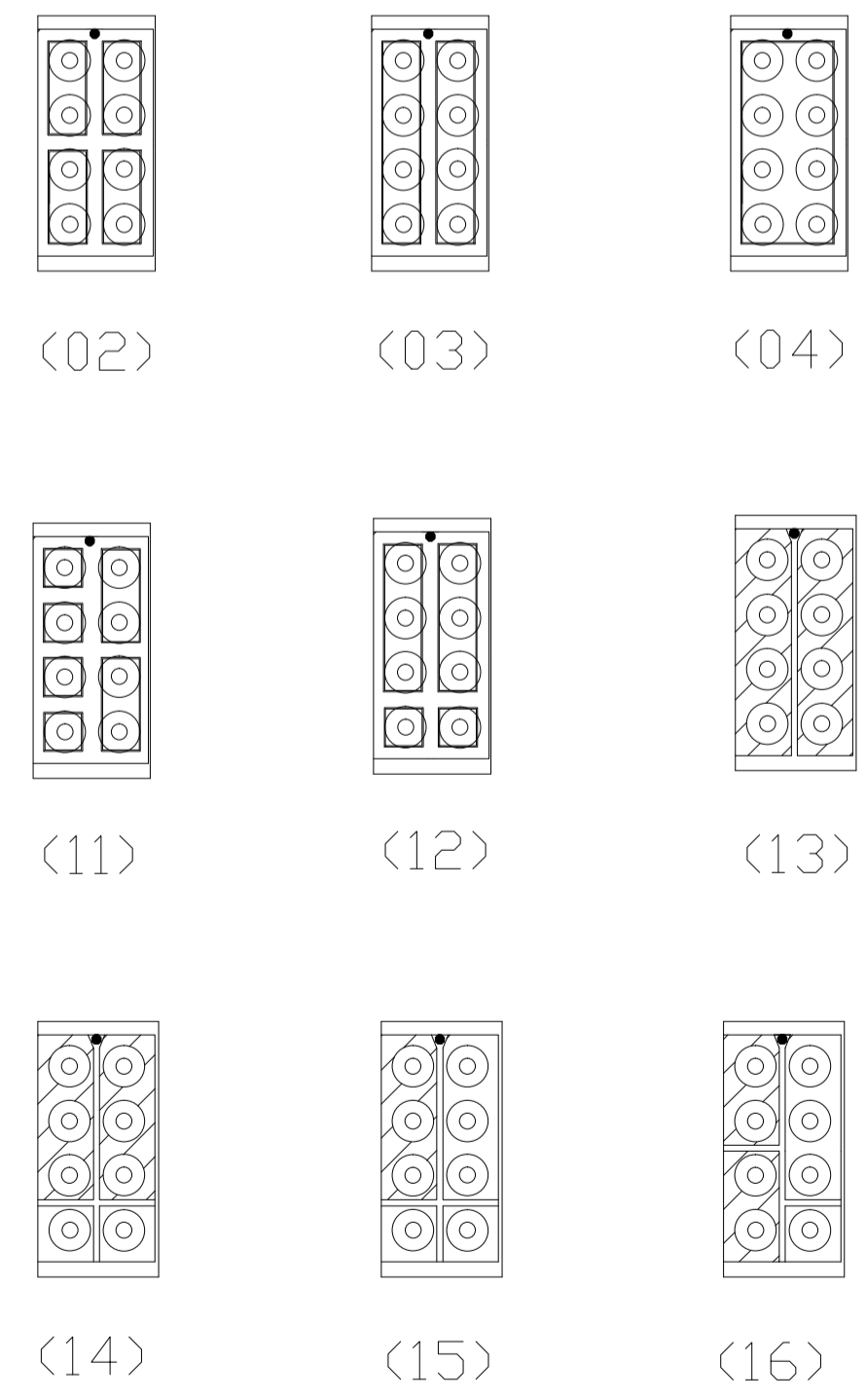


- 1 MODULE ASSEMBLIES ORIENTATED AS SHOWN FROM LOCATION NO. 31 ON RAIL ASSEMBLY.
- 2 MARK MODULE BLOCK WITH APPROPRIATE BUSSING ARRANGEMENT.
- 3 MARK CUSTOMER PART NO. 97437-121-01A. (-2 ONLY)
- 4 MARK "AMP", AMP PART NO. AND DATE CODE.
- 5 MARK TOP AND BOTTOM OF RAIL ASSEMBLY WITH ZONE IDENTIFICATION AS SHOWN.
- 6 MARK TOP OF END BLOCKS AND TIE BLOCK WITH "ABCD" AT LOCATION SHOWN.
- 7 MARK BOTTOM OF END BLOCKS AND TIE BLOCK WITH "EFGH" AT LOCATION SHOWN.
- 8 MARK LEFT SIDE RAIL WITH BUSSING IDENTIFICATION AS SHOWN.
- 9 REF. FLAT HEADED SCREWS MS51959-4.
- 10 REF. PAN HEADED SCREWS MS35206-203.
- 11 MARK EACH APPLICABLE MODULE ASSEMBLY WITH BUSSING ARRANGEMENT NUMBER IN APPROXIMATE AREA SHOWN.
- 12 REF. FLATHEAD SCREW MS51959-6 2
- 13 LOCK WASHER MS35338-039.
- 14. ROLLS-ROYCE QUALITY SPECIFICATION CQC-103 IS INVOKED FOR THIS PART NUMBER.
- 15 CONTACTS, SEALING PLUGS AND INS/EXT TOOL ARE NOT SUPPLIED, SEE TABLE FOR PART NUMBERS.
- 16 HOUSING MATERIAL: GLASS FILLED EPOXY THERMOSET. COLOR: BLACK ALL MODULES.

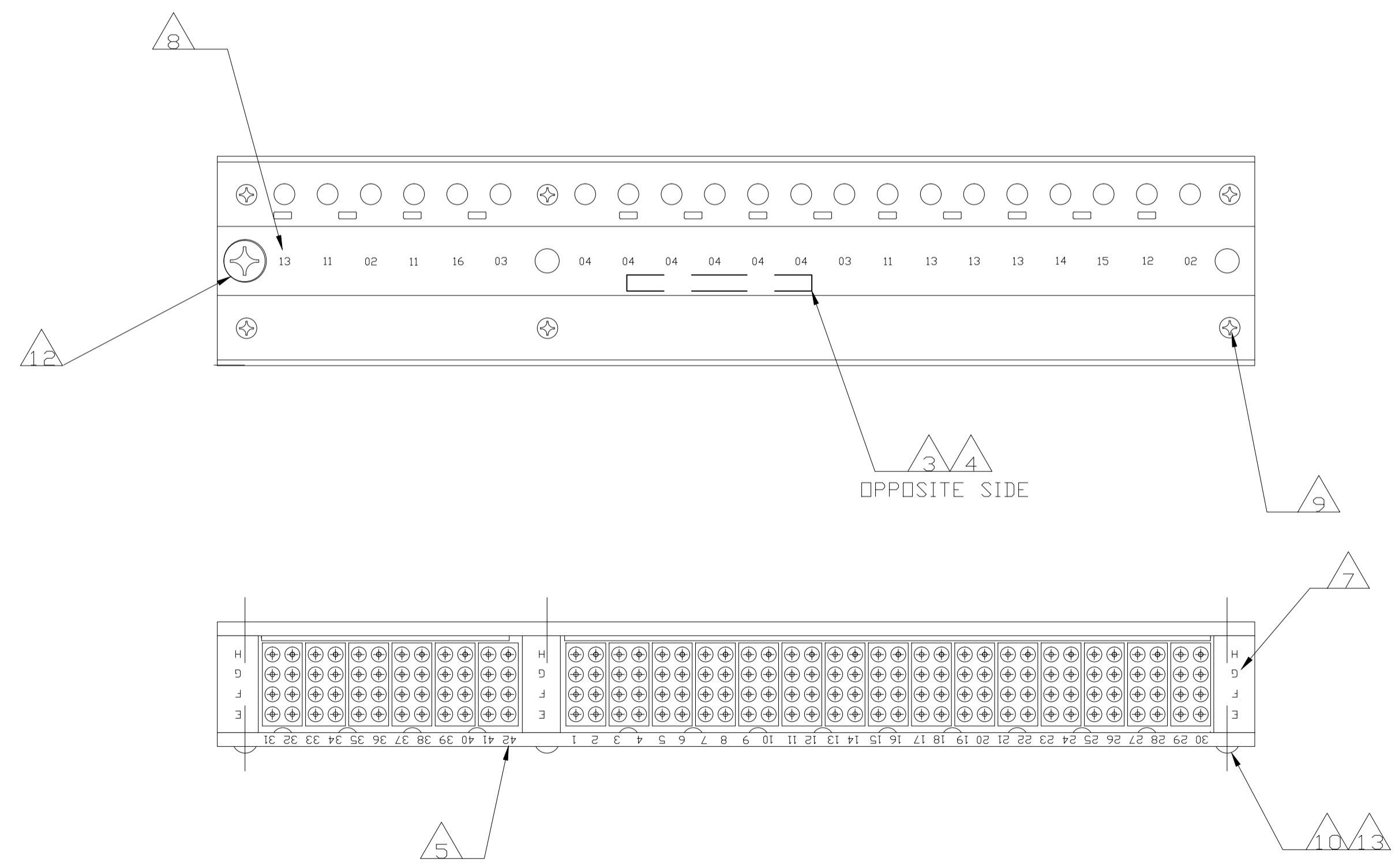


SECTION A - A

RAIL REMOVED FOR CLARITY



BUSSING ARRANGEMENT



RoHS COMPLIANT PART	(13) (11) (02) (11) (16) (03) TIE BLDCK (04) (04) (04) (04) (04) (04) (03) (11) (13) (13) (14) (15) (12) (02)	5-591642-2
SUPERCEDED BY 591642-2	(13) (11) (02) (11) (16) (03) TIE BLDCK (04) (04) (04) (04) (04) (03) (11) (13) (13) (13) (14) (15) (12) (02)	591642-2
REMARKS	BUSSING ARRANGEMENT	PART NO

THIS DRAWING IS A CONTROLLED DOCUMENT.		DWN C. C. THOMAS 19SEP00	TE Connectivity
DIMENSIONS: INCHES		CHK D. MILLER 9-16-00	
TOLERANCES UNLESS OTHERWISE SPECIFIED:		APVD D. MILLER 9-15-00	NAME
0 PLC ± -	1 PLC ± -	PRODUCT SPEC	FEED-THRU FRAME ASSY, SIZE 16, TJ
2 PLC ± .02	3 PLC ± .005	APPLICATION SPEC	
4 PLC ± -	ANGLES ± -	SIZE CAGE CODE DRAWING NO	RESTRICTED TO
MATERIAL	FINISH	WEIGHT	A1 00779C=591642
CUSTOMER DRAWING		SCALE 1:1	SHEET 1 OF 1 REV C