



Chipsmall Limited consists of a professional team with an average of over 10 year of expertise in the distribution of electronic components. Based in Hongkong, we have already established firm and mutual-benefit business relationships with customers from,Europe,America and south Asia,supplying obsolete and hard-to-find components to meet their specific needs.

With the principle of "Quality Parts,Customers Priority,Honest Operation,and Considerate Service",our business mainly focus on the distribution of electronic components. Line cards we deal with include Microchip,ALPS,ROHM,Xilinx,Pulse,ON,Everlight and Freescale. Main products comprise IC,Modules,Potentiometer,IC Socket,Relay,Connector.Our parts cover such applications as commercial,industrial, and automotives areas.

We are looking forward to setting up business relationship with you and hope to provide you with the best service and solution. Let us make a better world for our industry!



## Contact us

Tel: +86-755-8981 8866 Fax: +86-755-8427 6832

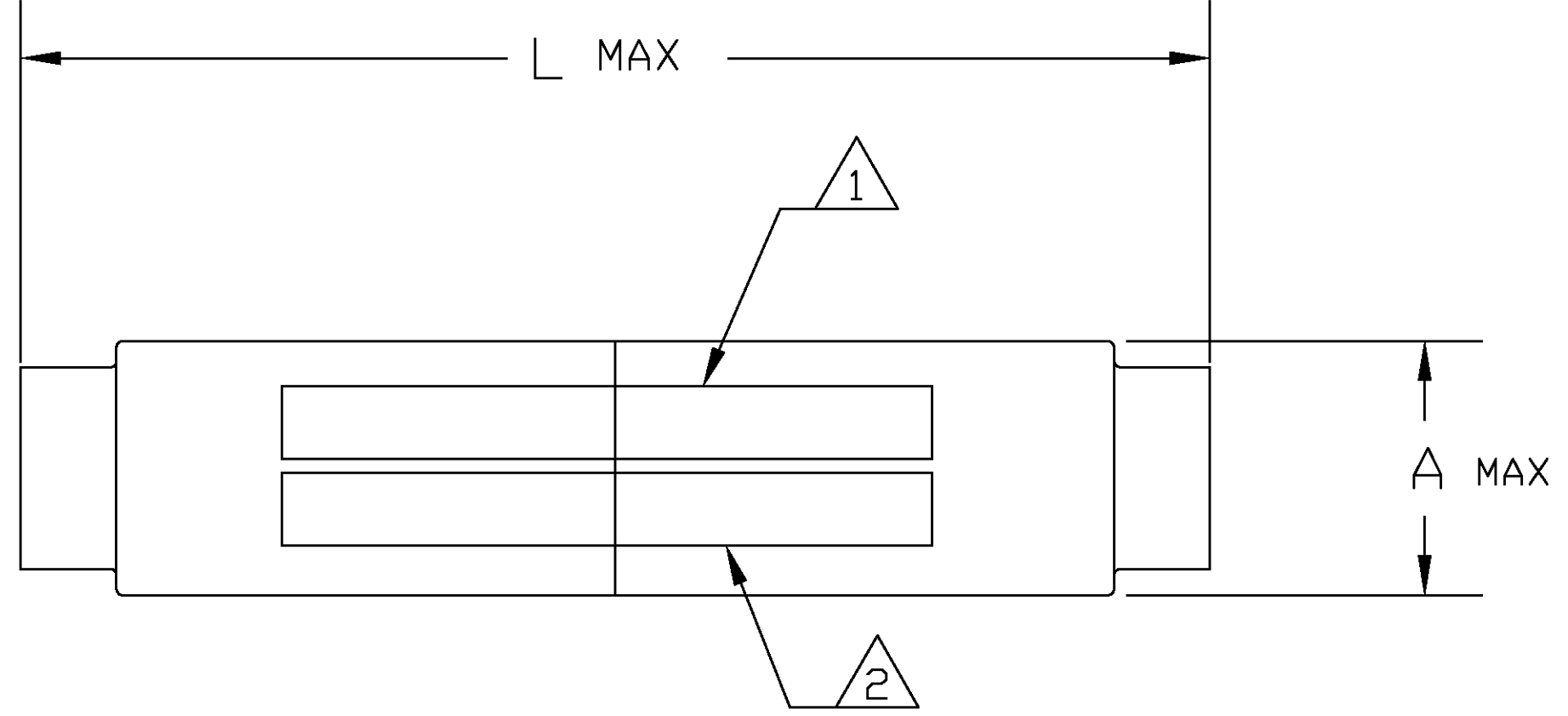
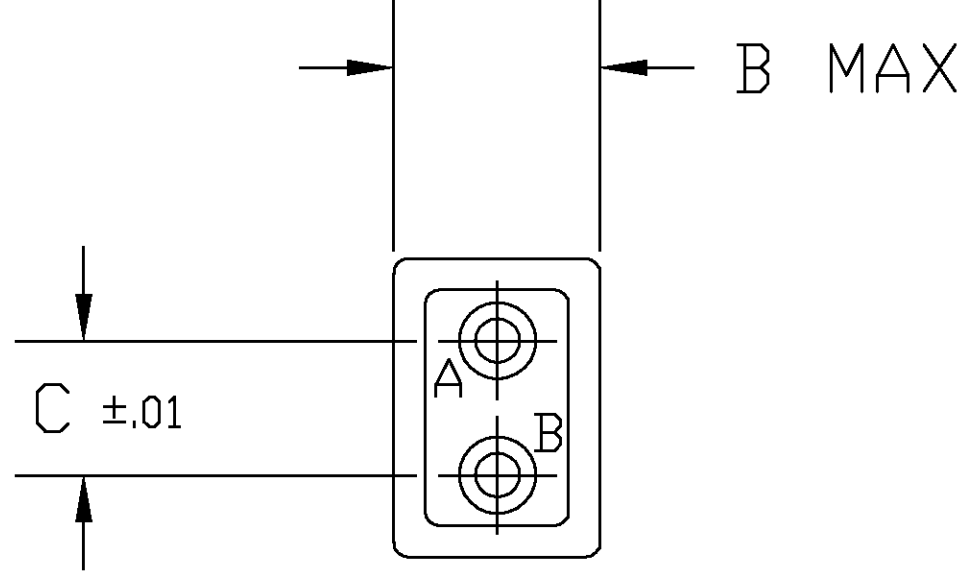
Email & Skype: info@chipsmall.com Web: www.chipsmall.com

Address: A1208, Overseas Decoration Building, #122 Zhenhua RD., Futian, Shenzhen, China



THIS DRAWING IS UNPUBLISHED. RELEASED FOR PUBLICATION .19		
© COPYRIGHT 19 BY AMP INCORPORATED. ALL RIGHTS RESERVED.		
DESCRIPTION	MATERIAL	FINISH
GROMMET	FLUOROSILICONE	MIL-T-81714,CLASS D, BLUE
SPLICE ASSEMBLY HOUSING	EPIALL TYPE 1908	MIL-T-81714,CLASS D, BLACK
TUBE SHRINK	PER MIL-1-23053/8	COLOR TRANSPARENT
CONTACT FEMALE SOCKET	BERYLLIUM COPPER PER ASTM-B194	GOLD PLATE PER MIL-G-45204
RETENTION CLIP	BERYLLIUM COPPER PER ASTM-B194 OR SST PER QQ-S-766	NONE
CONTACTS PIN	COPPER ALLOY PER MIL-C-39029/1	GOLD PLATE PER MIL-G-45204

LOC	DIST	REVISIONS					
DF	A0	P	LTR	DESCRIPTION	DATE	DWN	APVD
		B		REV PER 0600-5711-96	2-98	TT	DM



	1.552	.13	.275	.400	3	CLASS D		22	592588-6
	1.552	.13	.275	.400	4	CLASS D		20	592588-5
	1.922	.18	.300	.500	5	CLASS D		16	592588-4
SUPSD BY -4	1.922	.18	.300	.500	5	CLASS D	M81714/12-16D-1	16	592588-3
SUPSD BY -5	1.552	.13	.275	.400	4	CLASS D	M81714/12-20D-1	20	592588-2
SUPSD BY -6	1.552	.13	.275	.400	3	CLASS D	M81714/12-22D-1	22	592588-1
	L	C	B	A	REMARKS	MIL-T-81714 CLASS	MILITARY/CUSTOMER PART #	SIZE	

- 1 MARK WIRE SPLICE MARKED WITH 'AMP', AMP PART NO., AND DATE CODE AT APPROXIMATE AREA SHOWN.
- 2 MARK CUSTOMER/MILITARY PART NUMBER MARKED AT APPROXIMATE AREA SHOWN.
- 3 A QUANTITY OF 4 M39029/1-100 PIN CONTACTS ARE SUPPLIED WITH WIRE SPLICE.
- 4 A QUANTITY OF 4 M39029/1-101 PIN CONTACTS ARE SUPPLIED WITH WIRE SPLICE.
- 5 A QUANTITY OF 4 M39029/1-102 PIN CONTACTS ARE SUPPLIED WITH WIRE SPLICE.

THIS DRAWING IS A CONTROLLED DOCUMENT

DATE: 18FEB98  
 CHK: D. MILLER  
 APVD: D. MILLER  
 PRODUCT SPEC: -  
 APPLICATION SPEC: -  
 WEIGHT: -  
 CUSTOMER DRAWING

TOLERANCES UNLESS OTHERWISE SPECIFIED:  
 0 PLC ±  
 1 PLC ±  
 2 PLC ±  
 3 PLC ±.005  
 4 PLC ±  
 ANGLES ±  
 FINISH -

SCALE: 1:1  
 SHEET: 1 OF 1  
 REV: B

AMP Incorporated  
 Harrisburg, PA 17105-3608A

WIRE SPLICE ASSY, T.J. MILITARY, CLASS D

SIZE: A2  
 CAGE CODE: 00779  
 DRAWING NO: C=592588