



Chipsmall Limited consists of a professional team with an average of over 10 year of expertise in the distribution of electronic components. Based in Hongkong, we have already established firm and mutual-benefit business relationships with customers from,Europe,America and south Asia,supplying obsolete and hard-to-find components to meet their specific needs.

With the principle of "Quality Parts,Customers Priority,Honest Operation,and Considerate Service",our business mainly focus on the distribution of electronic components. Line cards we deal with include Microchip,ALPS,ROHM,Xilinx,Pulse,ON,Everlight and Freescale. Main products comprise IC,Modules,Potentiometer,IC Socket,Relay,Connector.Our parts cover such applications as commercial,industrial, and automotives areas.

We are looking forward to setting up business relationship with you and hope to provide you with the best service and solution. Let us make a better world for our industry!



Contact us

Tel: +86-755-8981 8866 Fax: +86-755-8427 6832

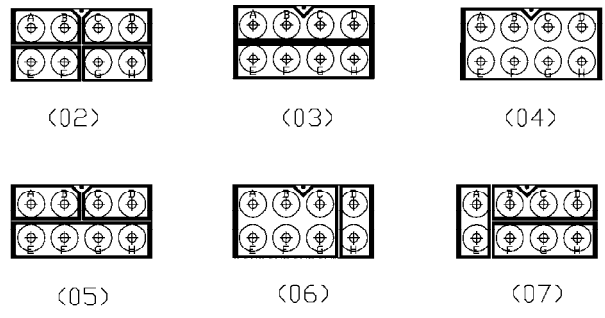
Email & Skype: info@chipsmall.com Web: www.chipsmall.com

Address: A1208, Overseas Decoration Building, #122 Zhenhua RD., Futian, Shenzhen, China

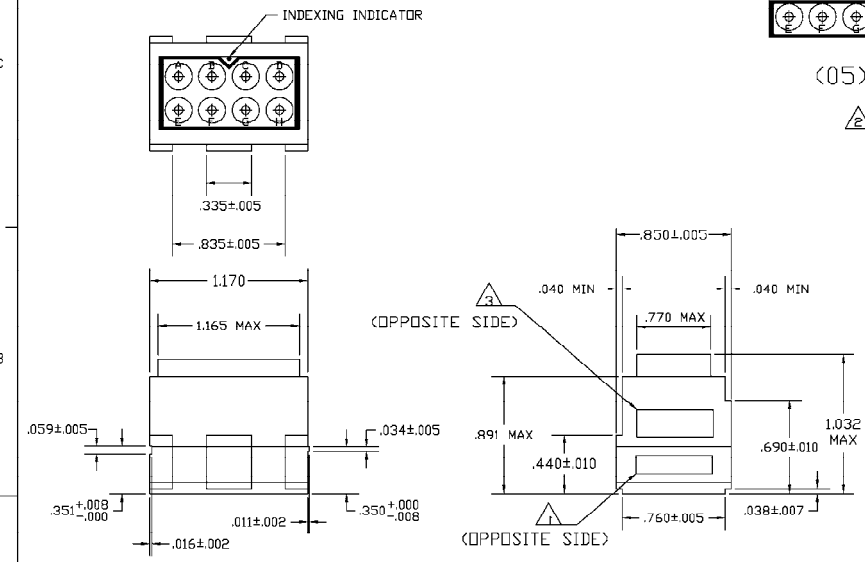


DESCRIPTION	MATERIAL	FINISH
MODULE ASSEMBLY	EPOXY	COLOR: BLACK
GROMMET	FLUOROSILICONE RUBBER 70/30 BLEND	COLOR: BLUE
CONTACT SOCKET	BERYLLIUM COPPER PER QQ-C-533	GOLD PLATE PER MIL-G-45204
RETAINING CLIP	BERYLLIUM COPPER PER QQ-C-533 OR STAINLESS STEEL PER QQ-S-766	NONE
CONTACTS	COPPER ALLOY PER MIL-C-39029/1 F.E.P.	GOLD PLATE PER MIL-G-45204
SEALING PLUGS	PER MIL-P-19468	COLOR: YELLOW

LOC	DIST	REV	DATE	APP'D
DF	A0	B	REV PER 0600-5652-96	TT DM



△ BUSSING ARRANGEMENTS



- △ MARK MODULE ASSEMBLY WITH 'AMP', AMP PART NO. AND DATE CODE .060 MINIMUM HIGH CHARACTERS PER 115-10002-2.
- △ BUSSING ARRANGEMENT OUTLINE DENOTES INTERNAL ARRANGEMENT OF CONTACT SOCKETS.
- △ MARK MODULE WITH APPROPRIATE CUSTOMER/MILITARY AT APPROXIMATE AREA SHOWN .060 MINIMUM HIGH CHARACTERS PER 115-10002-2.

538154-37				X		X	X	1-592616-9
538154-42					X	X	X	1-592616-8
538154-41			X			X	X	1-592616-7
538154-40	X	X				X	X	1-592616-6
538154-39						X	X	1-592616-5
538154-38				X		X	X	1-592616-4
[SUPSD BY -1 M81714/4-DB1					X	X	X	1-592616-3
[SUPSD BY -12 M81714/4-DB1	X					X	X	1-592616-2
[SUPSD BY -10 M81714/4-DB2		X				X	X	1-592616-1
[SUPSD BY -8 M81714/4-DB2			X			X	X	592616-9
[SUPSD BY -6 M81714/4-DB1				X		X	X	592616-8
[SUPSD BY -4 M81714/4-DB1					X	X	X	592616-7
[SUPSD BY -4 M81714/4-DB1					X	X	X	592616-6
[SUPSD BY -4 M81714/4-DB1					X	X	X	592616-5
[SUPSD BY -4 M81714/4-DB1					X	X	X	592616-4
[SUPSD BY -4 M81714/4-DB1					X	X	X	592616-3
[SUPSD BY -4 M81714/4-DB1					X	X	X	592616-2
[SUPSD BY -4 M81714/4-DB1					X	X	X	592616-1

MARKING	BUSSING ARRANGEMENTS	SEALING PLUG QTY 2	CONTACTS QTY 11	PART NO.
070605040302	3			

THIS DRAWING IS A CONTROLLED DOCUMENT

AMP Incorporated
Harpland, PA 17105-3698A

MODULE BLOCK ASSEMBLY
SIZE 12, TJ

DATE: 070799
SCALE: 2:1
SHEET: 1 of 1
REV: B