



Chipsmall Limited consists of a professional team with an average of over 10 year of expertise in the distribution of electronic components. Based in Hongkong, we have already established firm and mutual-benefit business relationships with customers from,Europe,America and south Asia,supplying obsolete and hard-to-find components to meet their specific needs.

With the principle of “Quality Parts,Customers Priority,Honest Operation,and Considerate Service”,our business mainly focus on the distribution of electronic components. Line cards we deal with include Microchip,ALPS,ROHM,Xilinx,Pulse,ON,Everlight and Freescale. Main products comprise IC,Modules,Potentiometer,IC Socket,Relay,Connector.Our parts cover such applications as commercial,industrial, and automotives areas.

We are looking forward to setting up business relationship with you and hope to provide you with the best service and solution. Let us make a better world for our industry!



## Contact us

Tel: +86-755-8981 8866 Fax: +86-755-8427 6832

Email & Skype: info@chipsmall.com Web: www.chipsmall.com

Address: A1208, Overseas Decoration Building, #122 Zhenhua RD., Futian, Shenzhen, China



THIS DRAWING IS UNPUBLISHED. RELEASED FOR PUBLICATION, 19

© COPYRIGHT 19 BY AMP INCORPORATED. ALL INTERNATIONAL RIGHTS RESERVED

DESCRIPTION	MATERIAL	FINISH
MODULE ASSEMBLY	D.A.P. PER MIL-M14	COLOR: RED
GROMMET	FLOURSILICONE 40/50 PER MIL-R-25988	COLOR: NATURAL
CONTACT SOCKET	BERYLLIUM COPPER ASTM-B194	GOLD PLATE PER MIL-G-45204
RETAINING CLIP	BERYLLIUM COPPER ASTM-B194 OR STAINLESS STEEL PER QQ-S-766	NONE

REVISIONS						
P	F	ZONE	LTR	DESCRIPTION	DATE	APPROVED
			0	RELEASE OF NEW PRODUCT	02/93	J.L.M.
			A	REV PER 0600-4061-95	NF 06/95	JH

D

D

C

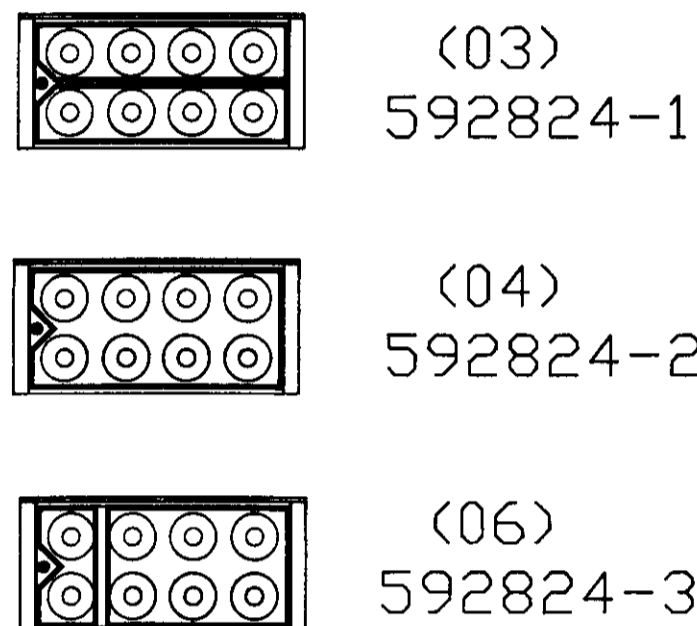
C

B

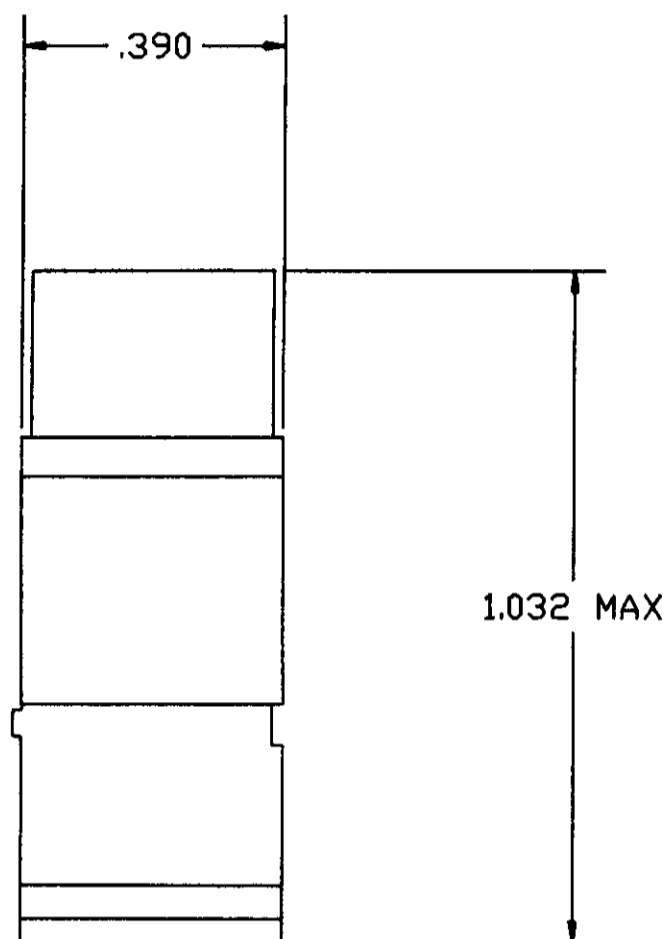
B

A

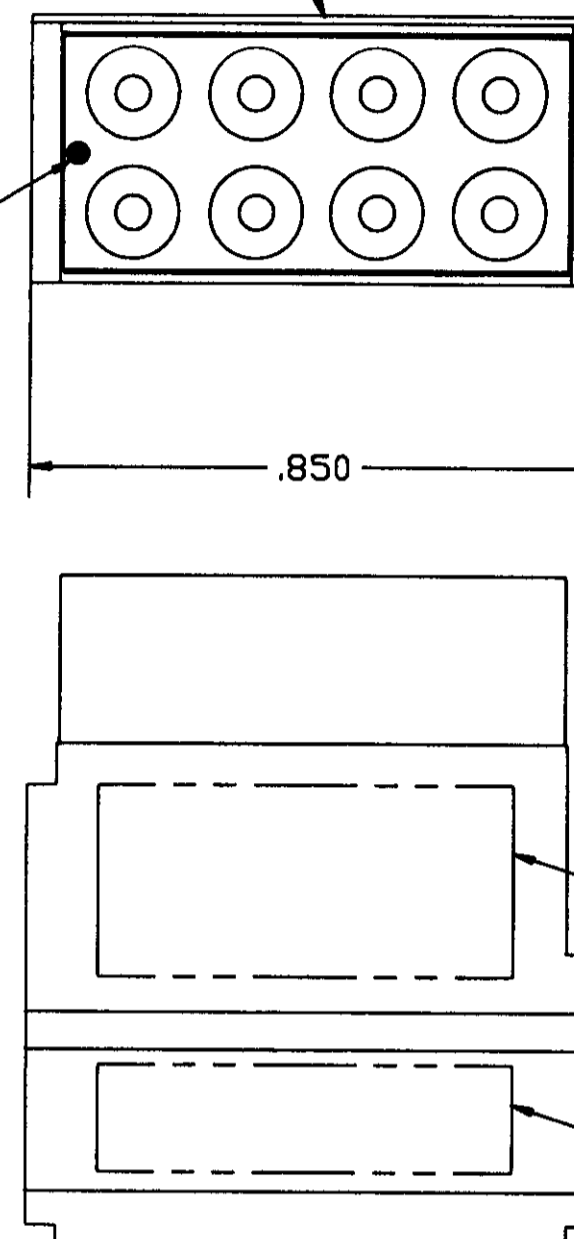
A



BUSSING ARRANGEMENTS



BUSSING ARRANGEMENT



- 1 MARK MODULE IDENTIFICATION, "AMP", AMP PART NO. AND DATE CODE.
- 2 MARK MODULE ASSEMBLY 592824-1 WITH CUSTOMER PART NO. MRTB16E03-204.
- 3 MARK MODULE ASSEMBLY 592824-2 WITH CUSTOMER PART NO. MRTB16E04-204.
- 4 MARK MODULE ASSEMBLY 592824-3 WITH CUSTOMER PART NO. MRTB16E06-204.
- 5. ROLLS ROYCE QUALITY SPECIFICATION CQC-103 IS INVOKED FOR THIS PART NO.

THIS DRAWING IS A CONTROLLED DOCUMENT FOR AMP INCORPORATED. IT IS SUBJECT TO CHANGE AND THE CONTROLLING ENGINEERING ORGANIZATION SHOULD BE CONTACTED FOR THE LATEST REVISION.

REMARKS	DESCRIPTION	PART NO
	SIZE 16	592824-3
	SIZE 16	592824-2
	SIZE 16	592824-1

DO NOT SCALE PRINT. UNLESS OTHERWISE SPECIFIED DIMENSIONS ARE IN INCHES. TOLERANCES DIM: 2 PLC DEC ± --- 3 PLC DEC ± .005 ANGLES ± ---		CONTRACT NO		AMP INCORPORATED Harrisburg, Pa. 17105	
MATERIAL		DR N. FRITZ 09-21-93			
FINISH		CHK R. RYAN 09-22-93		NAME MODULE, FEED-BACK ASSEMBLY SIZE 16 TJ	
SEE TABLE		APPD R. RYAN 09-22-93			
SEE TABLE		APPD D. ENGLER 09-22-93		SIZE C	FSCM NO 00779
		DSGN APPD		DRAWING NO 592824	
		OTHER APPD		SCALE 1 : 1 SHEET 1 OF 1	

CUSTOMER DRAWING