



Chipsmall Limited consists of a professional team with an average of over 10 year of expertise in the distribution of electronic components. Based in Hongkong, we have already established firm and mutual-benefit business relationships with customers from,Europe,America and south Asia,supplying obsolete and hard-to-find components to meet their specific needs.

With the principle of “Quality Parts,Customers Priority,Honest Operation,and Considerate Service”,our business mainly focus on the distribution of electronic components. Line cards we deal with include Microchip,ALPS,ROHM,Xilinx,Pulse,ON,Everlight and Freescale. Main products comprise IC,Modules,Potentiometer,IC Socket,Relay,Connector.Our parts cover such applications as commercial,industrial, and automotives areas.

We are looking forward to setting up business relationship with you and hope to provide you with the best service and solution. Let us make a better world for our industry!



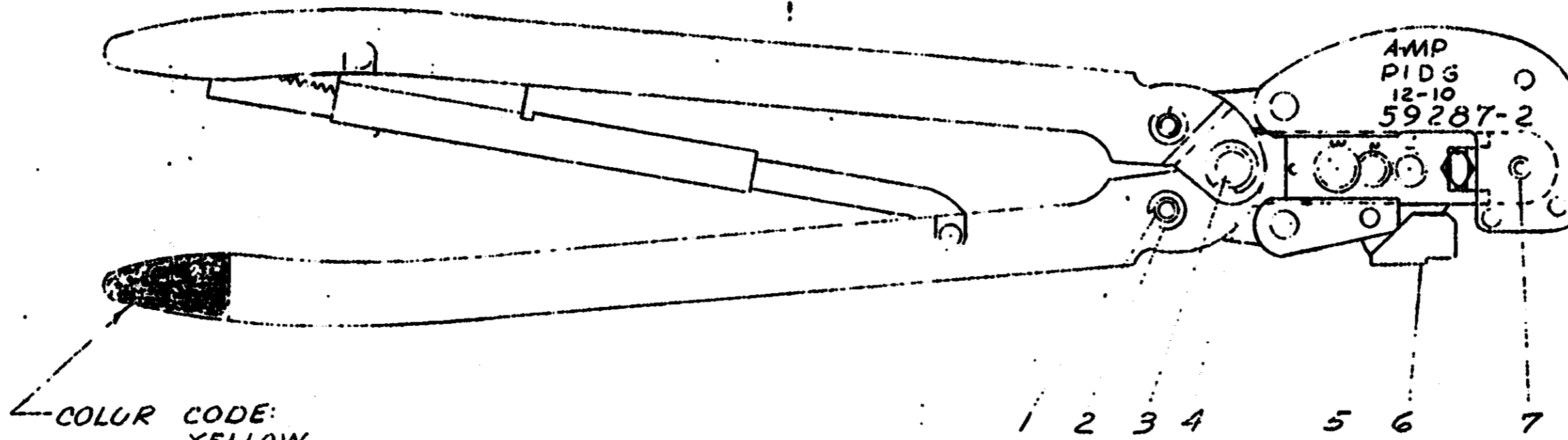
Contact us

Tel: +86-755-8981 8866 Fax: +86-755-8427 6832

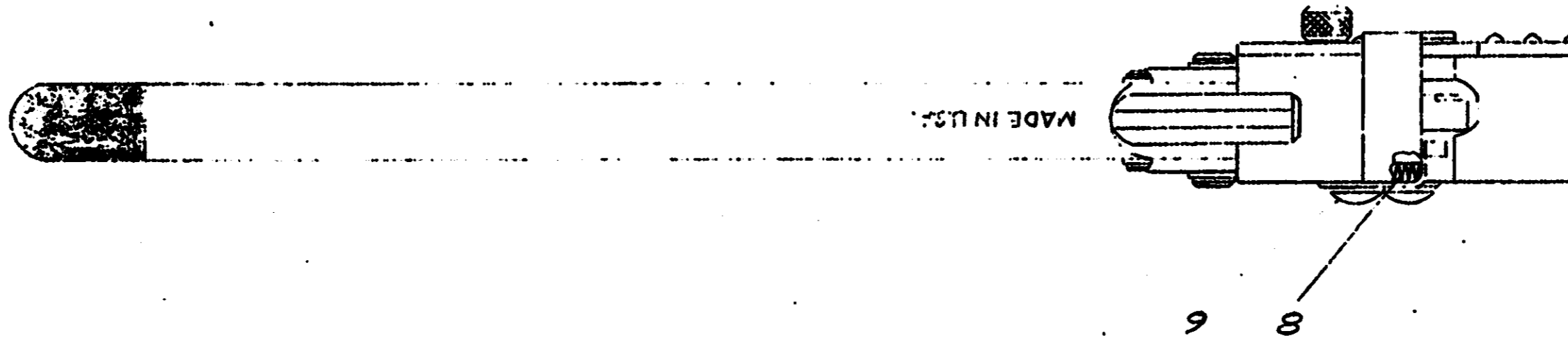
Email & Skype: info@chipsmall.com Web: www.chipsmall.com

Address: A1208, Overseas Decoration Building, #122 Zhenhua RD., Futian, Shenzhen, China

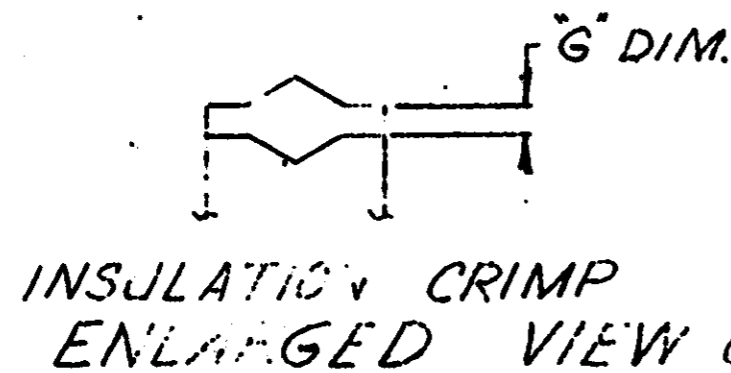




COLOR CODE:
YELLOW



SUPERSEDED BY 15.1261



INSULATION CRIMP
ENLARGED VIEW OF CRIMP DIMS.

BARREL CRIMP
ENLARGED VIEW OF CRIMP DIMS.

G DIM.	
GO	NO GO
.064	.084

A DIM.	
GO	NO GO
.169	.175

QTY	NUMBER	NAME	REMARKS
2	6-306131-4	SCREW - SPECIAL	
1	301974	SPRING	
1	5-21028-7	PIN	
1	306110-4	LOCATOR-STOP	
1	303848-2	PIN-ASSY ADJUSTMENT	
2	21044-6	RING-RETAINING	
1	301259	PIN-RETAINING	
2	21043-3	RING-RETAINING	
2	300388	PIN-RETAINING	

PLEASE READ DIMENSIONS
BOTTOM VIEW...

For replacement of crimp die,
return to...
proper Crimp Die adjustment.

REVISION RECORD		REVISION RECORD		REVISION RECORD		DESCRIPTION	MATERIAL AND FINISH		CUSTOMER COPY REFERENCE ONLY	
LTR	NO	DATE	DESCRIPTION	CHK	DATE	DESCRIPTION	MATERIAL AND FINISH	CLASS	SCALE	LOC
REVISION RECORD		REVISION RECORD		REVISION RECORD		DESCRIPTION	MATERIAL AND FINISH		CUSTOMER COPY REFERENCE ONLY	
							AMP INCORPORATED MILWAUKEE, WISCONSIN		AMP INCORPORATED MILWAUKEE, WISCONSIN	
							WIRE - RANGE INSULATION TYPE 12-10 1-1		SCALE LOC NO 1-1 M/C 59287-2	
							TOLERANCE EXCEPT AS NOTED ±.015		REV 59287-2	
							NAME HEAVY HEAD HAND TOOL ASSY			