



Chipsmall Limited consists of a professional team with an average of over 10 year of expertise in the distribution of electronic components. Based in Hongkong, we have already established firm and mutual-benefit business relationships with customers from,Europe,America and south Asia,supplying obsolete and hard-to-find components to meet their specific needs.

With the principle of “Quality Parts,Customers Priority,Honest Operation,and Considerate Service”,our business mainly focus on the distribution of electronic components. Line cards we deal with include Microchip,ALPS,ROHM,Xilinx,Pulse,ON,Everlight and Freescale. Main products comprise IC,Modules,Potentiometer,IC Socket,Relay,Connector.Our parts cover such applications as commercial,industrial, and automotives areas.

We are looking forward to setting up business relationship with you and hope to provide you with the best service and solution. Let us make a better world for our industry!



Contact us

Tel: +86-755-8981 8866 Fax: +86-755-8427 6832

Email & Skype: info@chipsmall.com Web: www.chipsmall.com

Address: A1208, Overseas Decoration Building, #122 Zhenhua RD., Futian, Shenzhen, China

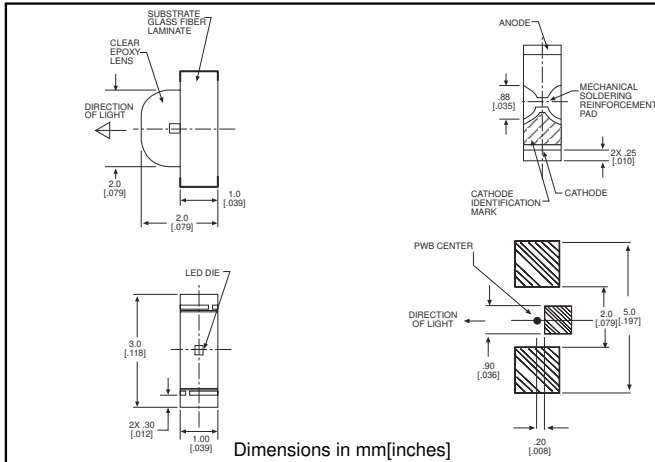


microLED®

**Surface Mount LED
Right Angle Type Package**

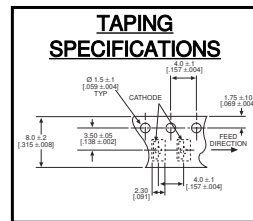
Dialight
597-2xx1-4xx

1



PART NO.*
597-2002-4xx
597-2111-4xx
597-2201-4xx
597-2212-4xx
597-2222-4xx
597-2311-4xx
597-2401-4xx

COLOR
Red
Red
Orange
Orange
Green
Green
Yellow



***ORDERING INFORMATION**

597-2xx1-4xx

packaging option

02	20 pieces on tape
07	7" reel, 3000 pcs/reel

Features

- Compatible with automatic placement equipment
- Compatible with infrared reflow processes
- Packaged on 8mm tape, 7" reels (meets EIA-481-1 standard)
- Helps to eliminate mixed technology PC board processing

ABSOLUTE MAXIMUM RATINGS (T _A =25°C)	Red -2202	Red -2111	Orange -2201	Orange -2212	Amber -2222	Green -2311	Yellow -2401
Power Dissipation (mW)	81	57.5	70	81	81	70	70
Forward Current (mA)	25	25	25	25	25	25	25
Derating (mA/C°) Above 25°C	.43	.36	.36	.43	.43	.36	.36
Peak Current (mA)	30	60	60	30	30	60	60
Pulse width = 100 μs	100*			100	100		
Operating Temperature (°C)	-40/+85	-30/+85	-30/+85	-40/+85	-40/+85	-30/+85	-30/+85
Storage Temperature (°C)	-40/+100	-40/+100	-40/+100	-40/+100	-40/+100	-40/+100	-40/+100
Soldering Temperature	260°C, 5 seconds max						

Solder Adherence per MIL-STD-202E, Method 208C

OPERATING CHARACTERISTICS (T _A =25°C)	Red -2202	Red -2111	Orange -2201	Orange -2212	Amber -2222	Green -2311	Yellow -2401
Luminous Intensity (mcd)	Min. 16	6.2	1.5	16	16	2.6	1.5
I _F =20mA	Typical 50	12.4	3	65	65	5.2	3
Peak Wavelength (nm)	Typical 630	660	605	609	592	560	580
λ Peak							
Viewing Angle (2θ 1/2)	Typical 130°	130°	130°	130°	130°	130°	130°
Forward Voltage (V)	Typical 1.9	1.7	2.2	1.9	1.9	2.1	2.2
I _F =20mA	Max. 2.4	2.3	2.8	2.4	2.4	2.8	2.8
Reverse Current (μA)	Max 100*	100	100	100	100*	100	100
(V _R = 4V) *(V _R = 5V)							

θ 1/2 is the off axis angle at which the luminous intensity is half the axial luminous intensity