



Chipsmall Limited consists of a professional team with an average of over 10 year of expertise in the distribution of electronic components. Based in Hongkong, we have already established firm and mutual-benefit business relationships with customers from,Europe,America and south Asia,supplying obsolete and hard-to-find components to meet their specific needs.

With the principle of “Quality Parts,Customers Priority,Honest Operation,and Considerate Service”,our business mainly focus on the distribution of electronic components. Line cards we deal with include Microchip,ALPS,ROHM,Xilinx,Pulse,ON,Everlight and Freescale. Main products comprise IC,Modules,Potentiometer,IC Socket,Relay,Connector.Our parts cover such applications as commercial,industrial, and automotives areas.

We are looking forward to setting up business relationship with you and hope to provide you with the best service and solution. Let us make a better world for our industry!



Contact us

Tel: +86-755-8981 8866 Fax: +86-755-8427 6832

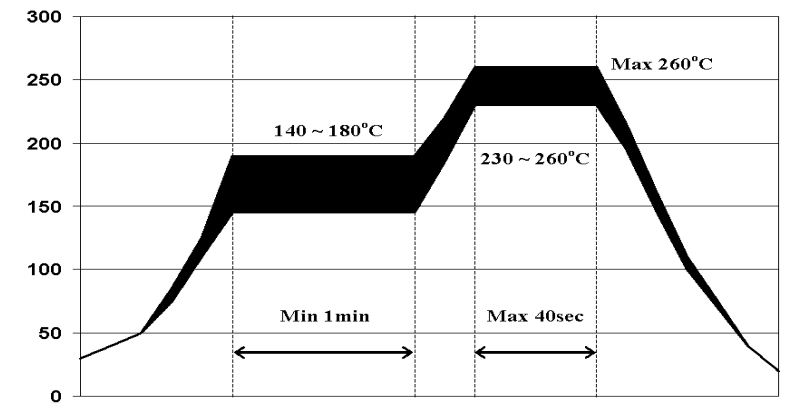
Email & Skype: info@chipsmall.com Web: www.chipsmall.com

Address: A1208, Overseas Decoration Building, #122 Zhenhua RD., Futian, Shenzhen, China



OPERATING CHARACTERISTICS AT 25 °C AMBIENT														REVISIONS			
DIALIGHT CATALOG P/N	COLOR	I _F (mA)	FORWARD VOLTAGE (V)		LUMINOUS INTENSITY (mcd)		REVERSE LEAKAGE CURRENT (μA)	PEAK WAVELENGTH (nm)	DOMINANT WAVELENGTH (nm)			VIEWING ANGLE (2θ 1/2) (DEGREES)	REVISIONS				
			TYP.	MAX.	MIN.	TYP.	MAX.		MAX.	MIN.	TYP.		MAX.	REV.	ECN.	DRN.	DATE
597-3021-507F, -502F	RED	20	2.0	2.8	2.2	6.3	10.4	100	650	646	653	659	110	A	---	TWC	10-11-05
597-3111-507F, -502F	BRIGHT RED	20	1.75	2.5	5.6	16.0	26.4	100	660	656	662	668	110	A	---	TWC	10-11-05
597-3211-507F, -502F	ORANGE	20	2.0	2.8	3.6	10.0	16.4	100	610	604	612	618	110	A	---	TWC	10-11-05
597-3301-507F, -502F	GREEN	20	2.2	2.8	5.6	25.0	44.4	100	570	565	573	581	110	A	---	TWC	10-11-05
597-3401-507F, -502F	YELLOW	20	2.1	2.8	2.2	6.3	10.4	100	585	580	588	596	110	A	---	TWC	10-11-05

REV	ECN NO	REVISIONS	DRN	CKD	APP	DATE
A	---	NEW RELEASE	TWC			



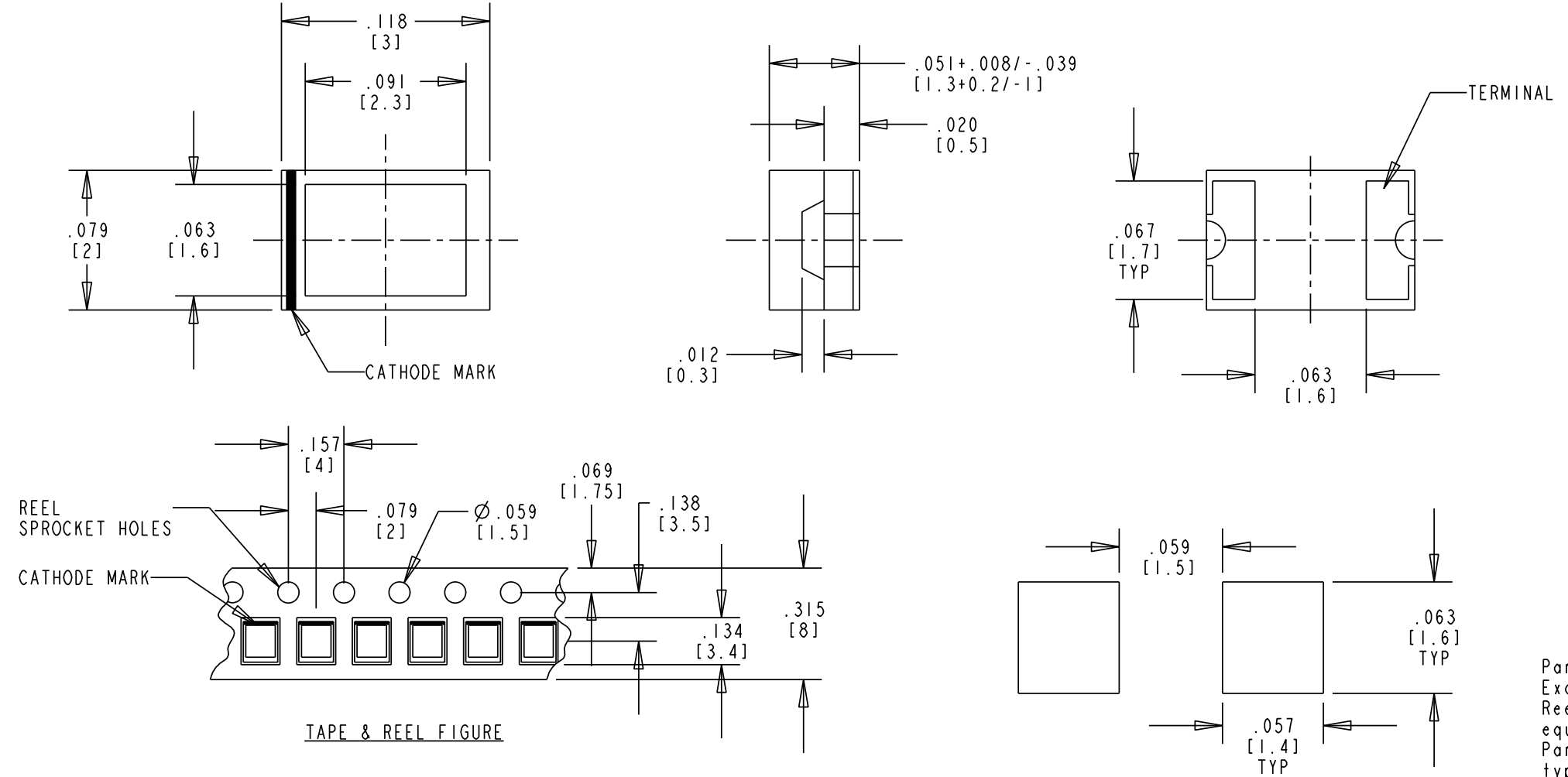
RoHS COMPLIANT REFLOW PROFILE

NOTES:

1. EPOXY COLOR: WATER CLEAR.
2. LEAD FINISH: GOLD (Au) PLATED OVER NICKEL (Ni).
3. TAPE AND REEL LEDS MAY REQUIRE RE-TAPING AFTER TWELVE MONTHS.
4. DIALIGHT PART NUMBER: 597-3XX1-507F FOR A 2500 PC. REEL AND 597-3XX1-502F FOR A 20 PC. SAMPLE STRIP

RoHS Compliant 597-3XX1-50XF Surface Mount CBI

Part Numbers with the "F" suffix ending are RoHS Compliant.
 Example: 597-3301-507F
 Reel and bag packaging are marked with "RoHS Compliant" label or equivalent markings. These parts can be used with RoHS reflow profile. Parts can be wave soldered, dip soldered or hand soldered using typical lead-free soldering process with max 260°C temp. for 5 sec.



SOLDER PAD LAYOUT

ABSOLUTE MAXIMUM RATING AT 25°C AMBIENT	597-3XX1-507F AND 597-3XX1-502F					UNITS	
	3021	3111	3211	3301	3401		
POWER DISSIPATION	70	75		70		mW	
CONTINUOUS FORWARD CURRENT	25	30		25		mA	
PEAK FORWARD CURRENT (PULSE WIDTH 1 ms, DUTY 20%)	60	75		60		mA	
OPERATING TEMPERATURE						-30 TO +85	°C
STORAGE TEMPERATURE						-40 TO +85	°C

THIS DRAWING AND THE CONTENTS HEREIN ARE CONFIDENTIAL AND THE SOLE PROPERTY OF DIALIGHT. REPRODUCTION OF THIS DRAWING OR CONSTRUCTION OF ANY PARTS WITHIN THIS DRAWING ARE FORBIDDEN WITHOUT THE WRITTEN CONSENT OF DIALIGHT.

SCALE: DRAWING SCALE ALL DIM'S IN: INCHES (MM)	DRAWING NUMBER C-17290	REV A
TOLERANCES: UNLESS OTHERWISE SPECIFIED	TITLE SINGLE COLOR SMT LED 1208 PKG RoHS COMPLIANT	
FRACTIONS: ±1/64 DECIMALS (.XX): ±.01 DECIMALS (.XXX): ±.005 DECIMALS (.XXXX): ±.0005 ANGLES: ±1°	MATERIAL	
FINISH:		
FSCM 83330	1501 ROUTE 34 SOUTH FARMINGDALE, NJ 07727	
SHEET 1 OF 1		FAMILY TABLE: