



Chipsmall Limited consists of a professional team with an average of over 10 year of expertise in the distribution of electronic components. Based in Hongkong, we have already established firm and mutual-benefit business relationships with customers from,Europe,America and south Asia,supplying obsolete and hard-to-find components to meet their specific needs.

With the principle of “Quality Parts,Customers Priority,Honest Operation,and Considerate Service”,our business mainly focus on the distribution of electronic components. Line cards we deal with include Microchip,ALPS,ROHM,Xilinx,Pulse,ON,Everlight and Freescale. Main products comprise IC,Modules,Potentiometer,IC Socket,Relay,Connector.Our parts cover such applications as commercial,industrial, and automotives areas.

We are looking forward to setting up business relationship with you and hope to provide you with the best service and solution. Let us make a better world for our industry!



Contact us

Tel: +86-755-8981 8866 Fax: +86-755-8427 6832

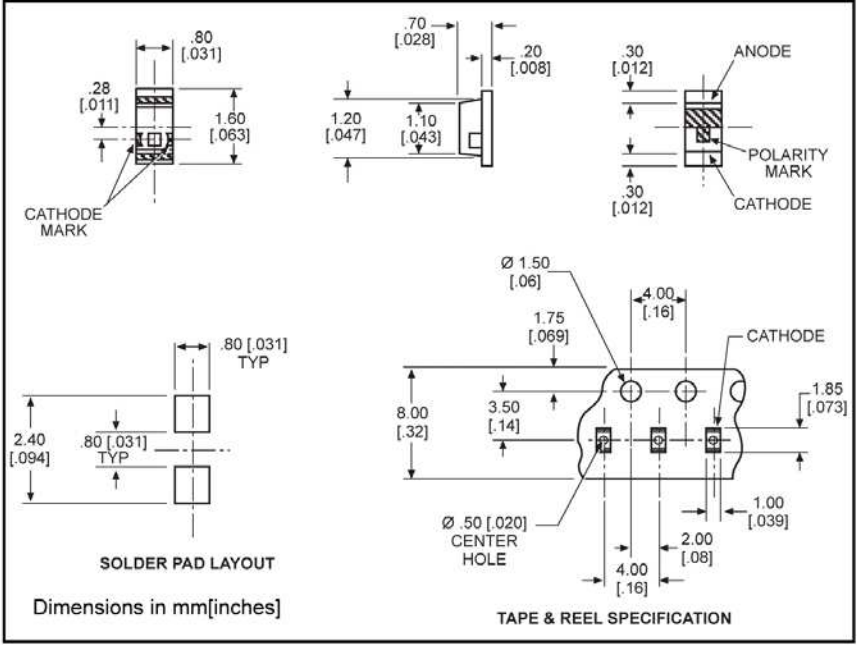
Email & Skype: info@chipsmall.com Web: www.chipsmall.com

Address: A1208, Overseas Decoration Building, #122 Zhenhua RD., Futian, Shenzhen, China



Surface Mount LED 0603 Type Package

597-5004-4xx
597-5x12-4xx
597-52x3-4xx



PART NO.*

597-5004-4xx
597-5112-4xx
597-5203-4xx
597-5213-4xx
597-5223-4xx
597-5312-4xx
597-5412-4xx

COLOR

AllnGaP Red
Red
Orange
AllnGaP Orange
AllnGaP Yellow
Green
Yellow Green

Benefits

- Compatible with automatic placement equipment
- Compatible with infrared reflow processes
- Packaged on 12mm tape, 7" reels (meets EIA-481-1 standard)
- Helps to eliminate mixed technology PC board processing

***ORDERING INFORMATION**

597-5xxx-4xx

packaging option

02	20 pieces on tape
07	7" reel, 4000 pcs/reel

	AllnGaP Red -5004	Red -5112	Orange -5203	AllnGaP Orange -5213	AllnGaP Yellow -5223	Green -5312	Yellow Green -5412
ABSOLUTE MAXIMUM RATINGS ($T_A=25^\circ\text{C}$)							
Power Dissipation (mW)	81	57.5	70	81	81	70	70
Forward Current (mA)	30	25	25	30	30	25	25
Peak Current (mA)	100	60	60	100	100	60	60
<i>Pulse width = 10 μs</i>							
Operating Temperature ($^\circ\text{C}$)	-40/+85	-30/+85	-30/+85	-40/+85	-40/+85	-30/+85	-30/+85
Storage Temperature ($^\circ\text{C}$)	-40/+100	-40/+100	-40/+100	-40/+100	-40/+100	-40/+100	-40/+100
Soldering Temperature	240 $^\circ\text{C}$, 5 sec. max						

Solder Adherence per MIL-STD-202E, Method 208C

		AllnGaP Red -5004	Red -5112	Orange -5203	AllnGaP Orange -5213	AllnGaP Yellow -5223	Green -5312	Yellow Green -5412
OPERATING CHARACTERISTICS ($T_A=25^\circ\text{C}$)								
Luminous Intensity (mcd)	Min.	16	7	2	16	16	3.8	7
	Typical	50	11.7	3.4	65	65	6.4	11.7
	$I_F=20\text{mA}$							
Peak Wavelength (nm)	Typical	630	660	605	609	592	560	570
	λ_{Peak}							
Viewing Angle ($2\Theta_{1/2}$)	Typical	152 $^\circ$	152 $^\circ$	152 $^\circ$	152 $^\circ$	152 $^\circ$	152 $^\circ$	152 $^\circ$
Forward Voltage (V)	Typical	1.9	1.7	2.2	1.9	1.9	2.1	2.1
	Max.	2.4	2.3	2.8	2.4	2.4	2.8	2.8
	$I_F=20\text{mA}$							
Reverse Current (μA)	Max	100	100*	100*	100	100	100*	100*
	$(V_R = 5\text{V}) \quad * (V_R = 4\text{V})$							

$\Theta_{1/2}$ is the off axis angle at which the luminous intensity is half the axial luminous intensity