



Chipsmall Limited consists of a professional team with an average of over 10 year of expertise in the distribution of electronic components. Based in Hongkong, we have already established firm and mutual-benefit business relationships with customers from,Europe,America and south Asia,supplying obsolete and hard-to-find components to meet their specific needs.

With the principle of “Quality Parts,Customers Priority,Honest Operation,and Considerate Service”,our business mainly focus on the distribution of electronic components. Line cards we deal with include Microchip,ALPS,ROHM,Xilinx,Pulse,ON,Everlight and Freescale. Main products comprise IC,Modules,Potentiometer,IC Socket,Relay,Connector.Our parts cover such applications as commercial,industrial, and automotives areas.

We are looking forward to setting up business relationship with you and hope to provide you with the best service and solution. Let us make a better world for our industry!



Contact us

Tel: +86-755-8981 8866 Fax: +86-755-8427 6832

Email & Skype: info@chipsmall.com Web: www.chipsmall.com

Address: A1208, Overseas Decoration Building, #122 Zhenhua RD., Futian, Shenzhen, China

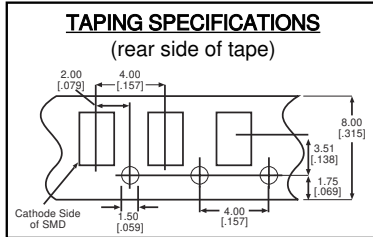
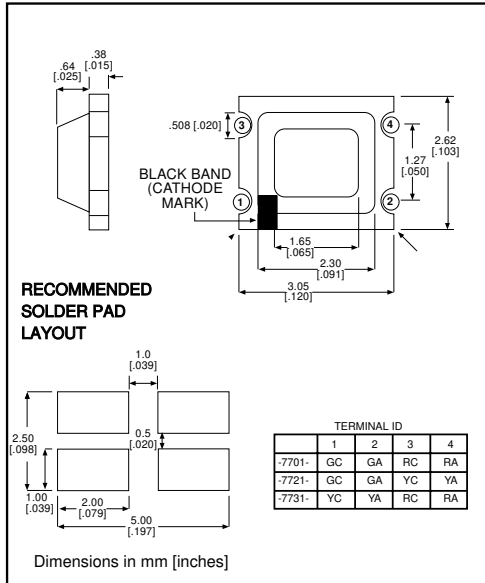




Surface Mount LED Bi-Color

Dialight

597-77x1-1xx



Features

- Compatible with automatic placement equipment
- Compatible with infrared reflow processes
- Packaged on 8mm tape, 7" reels (meets EIA-481-1 standard)
- Helps to eliminate mixed technology PC board processing
- Compatible with Dialight's Optopipe™ Series light pipes

PART NO.* COLOR

- 597-7701-1xx Red/Green
- 597-7721-1xx Yellow/Green
- 597-7731-1xx Red/Yellow

*ORDERING INFORMATION

597-77x1-1xx

packaging option

| | |
|----|------------------------|
| 02 | 20 pieces on tape |
| 07 | 7" reel, 3000 pcs/reel |

ABSOLUTE MAXIMUM RATINGS (T_A=25°C)

| | Red/Green -7701 | Yellow/Green -7721 | Red/Yellow -7731 |
|--|-------------------------------|------------------------------|----------------------------|
| Power Dissipation (mW) | 65/65 | 70/65 | 65/70 |
| Forward Current (mA) | 25 | 25 | 25 |
| Derating (mA/°C) | .33 | .33 | .33 |
| Peak Current (mA) <i>Pulse width = 1 μs</i> | 100 | 100 | 100 |
| Operating Temperature (°C) | -25/+75 | -25/+75 | -25/+75 |
| Storage Temperature (°C) | -30/+85 | -30/+85 | -30/+85 |
| Soldering Profile | 240°C to 260°C for 10 seconds | | |

Solder Adherence per MIL-STD-202E, Method 208C

OPERATING CHARACTERISTICS (T_A=25°C)

| | | Red/Green -7701 | Yellow/Green -7721 | Red/Yellow -7731 |
|---|---------|---------------------------|------------------------------|----------------------------|
| Luminous Intensity (mcd) | Min. | 1.6/6 | 3/6 | 1.6/3 |
| | Typical | 4/12 | 8/12 | 4/8 |
| Peak Wavelength (nm) | Typical | 630/565 | 585/565 | 630/585 |
| Viewing Angle (2θ _{1/2}) | Typical | 170° | 170° | 170° |
| Forward Voltage (V) | Typical | 2/2 | 2.1/2 | 2/2.1 |
| | Max. | 2.6/2.6 | 2.8/2.6 | 2.6/2.8 |
| Reverse Voltage (V), I _R =10μA | Min. | 4 | 4 | 4 |

θ_{1/2} is the off axis angle at which the luminous intensity is half the axial luminous intensity