



Chipsmall Limited consists of a professional team with an average of over 10 year of expertise in the distribution of electronic components. Based in Hongkong, we have already established firm and mutual-benefit business relationships with customers from,Europe,America and south Asia,supplying obsolete and hard-to-find components to meet their specific needs.

With the principle of “Quality Parts,Customers Priority,Honest Operation,and Considerate Service”,our business mainly focus on the distribution of electronic components. Line cards we deal with include Microchip,ALPS,ROHM,Xilinx,Pulse,ON,Everlight and Freescale. Main products comprise IC,Modules,Potentiometer,IC Socket,Relay,Connector.Our parts cover such applications as commercial,industrial, and automotives areas.

We are looking forward to setting up business relationship with you and hope to provide you with the best service and solution. Let us make a better world for our industry!



Contact us

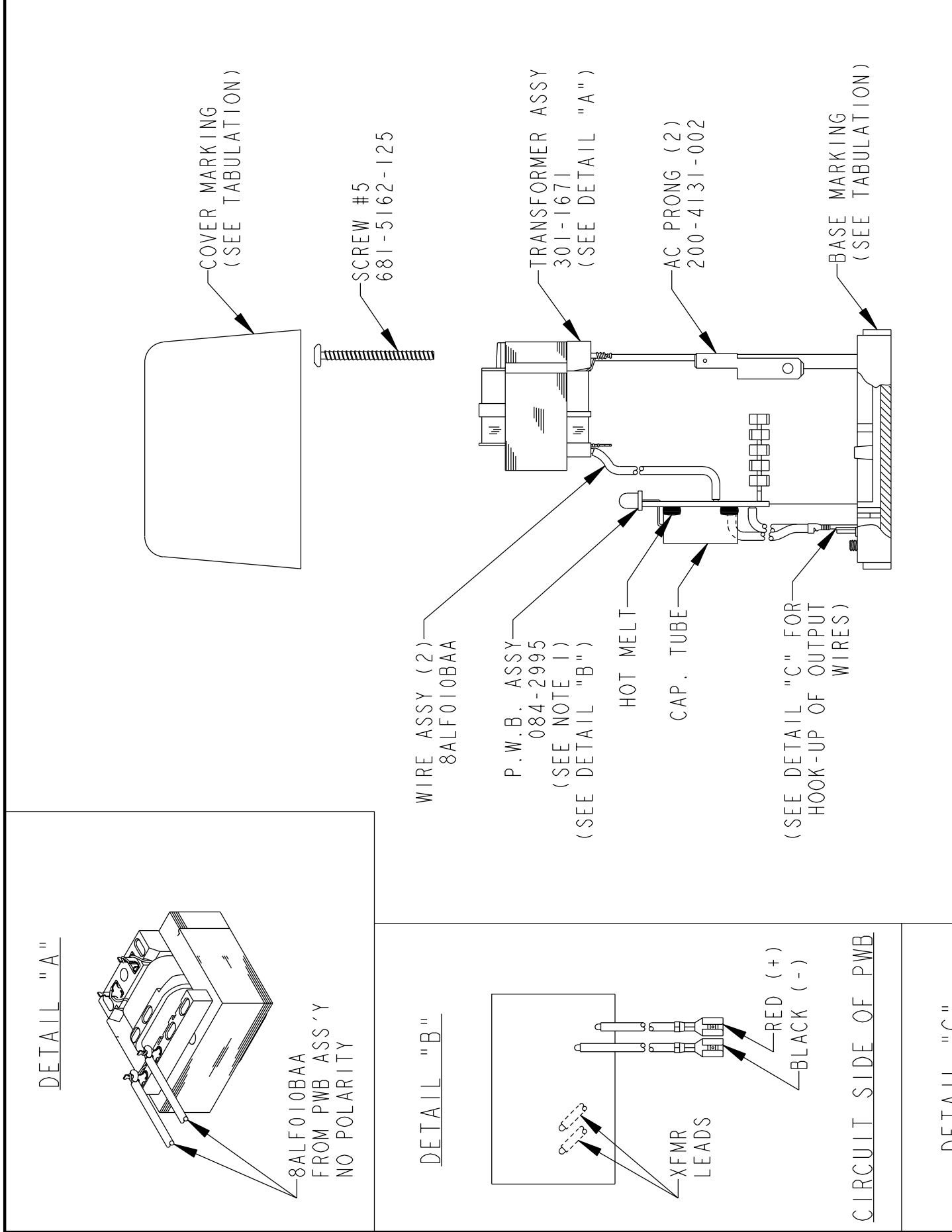
Tel: +86-755-8981 8866 Fax: +86-755-8427 6832

Email & Skype: info@chipsmall.com Web: www.chipsmall.com

Address: A1208, Overseas Decoration Building, #122 Zhenhua RD., Futian, Shenzhen, China

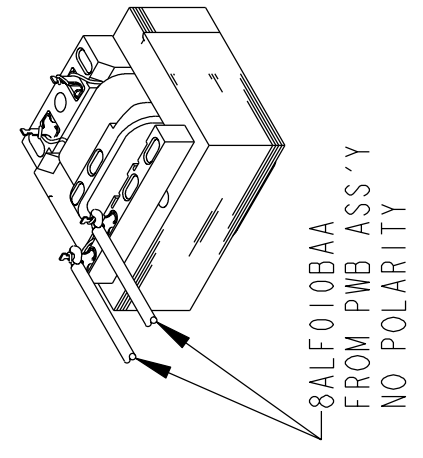


REVISIONS			
REV	DESCRIPTION	DATE	APPROVAL
B	REVISE AND REDRAW	6-19-89	96046 KDB
C	ADD P/N 5VA-06060-0N TO TAB	8-14-89	98088 RJM
D	ADD P/N 5VA-06060-0P TO TAB	10-24-91	91029 JL
E	PWB ASSY P/N WAS 080-2756	10-24-94	46033
F	ITEM 5VA-06060-00 CVR MKG P/N CHANGED	8-27-01	16542

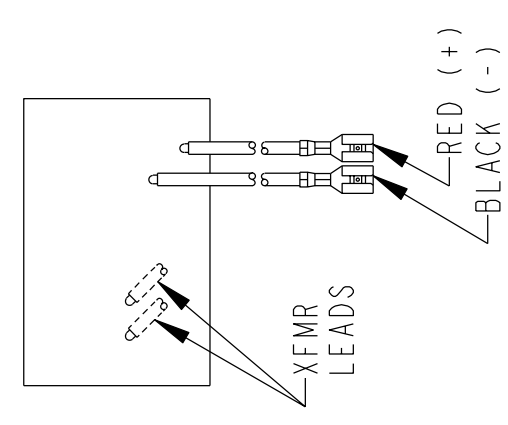


- NOTES:
1. NOT ALL COMPONENTS SHOWN ON CIRCUIT BOARD ASSEMBLY FOR CLARITY.
 2. HOT MELT PWB TO BASE AND CAP AND TUBE TO PWB.
 3. HOT MELT POTS AFTER SETTING AT PRETEST.

DETAIL "A"

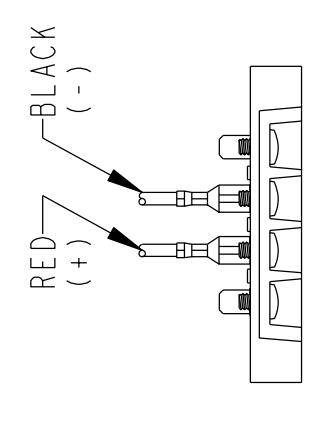


DETAIL "B"



CIRCUIT SIDE OF PWB

DETAIL "C"



VIEW OF BASE AND LEADWIRE HOOK-UP ONLY

TOLERANCES UNLESS NOTED OTHERWISE	.X ±.020 .XX ±.010 .XXX ±.005 ANGLES ±.5°
-----------------------------------	--

SUPPLEMENTARY INFORMATION FIRST USED	
DO NOT SCALE DRAWING	
DRAWN BY M. HOVDE	27-Aug-01
DESIGNER	
AGENCY	
ENGINEER	
APPROVED	

BATTERY CHARGER FINAL ASSEMBLY		AULT AULT INCORPORATED MINNEAPOLIS, MINNESOTA	
SIZE	DRAWING NO.	REV	
B	5VA060600X	F	
SCALE NONE		SHEET 1 OF 1	

UNIT PART NO.	REV	BASE ASSY	COVER MARKING
5VA-06060-00	H	150-2072	150-2072
5VA-06060-02	G	150-1369	150-1380
5VA-06060-07	G	150-1557	150-1367
5VA-06060-0N	B	150-3967	150-1380
5VA-06060-0P	B	150-4579	150-4587