



Chipsmall Limited consists of a professional team with an average of over 10 year of expertise in the distribution of electronic components. Based in Hongkong, we have already established firm and mutual-benefit business relationships with customers from,Europe,America and south Asia,supplying obsolete and hard-to-find components to meet their specific needs.

With the principle of “Quality Parts,Customers Priority,Honest Operation,and Considerate Service”,our business mainly focus on the distribution of electronic components. Line cards we deal with include Microchip,ALPS,ROHM,Xilinx,Pulse,ON,Everlight and Freescale. Main products comprise IC,Modules,Potentiometer,IC Socket,Relay,Connector.Our parts cover such applications as commercial,industrial, and automotives areas.

We are looking forward to setting up business relationship with you and hope to provide you with the best service and solution. Let us make a better world for our industry!



## Contact us

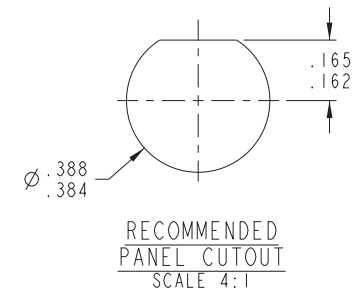
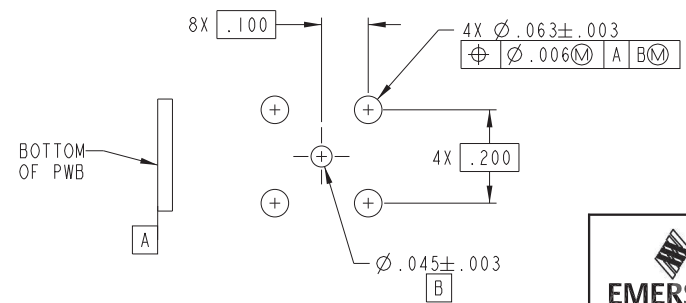
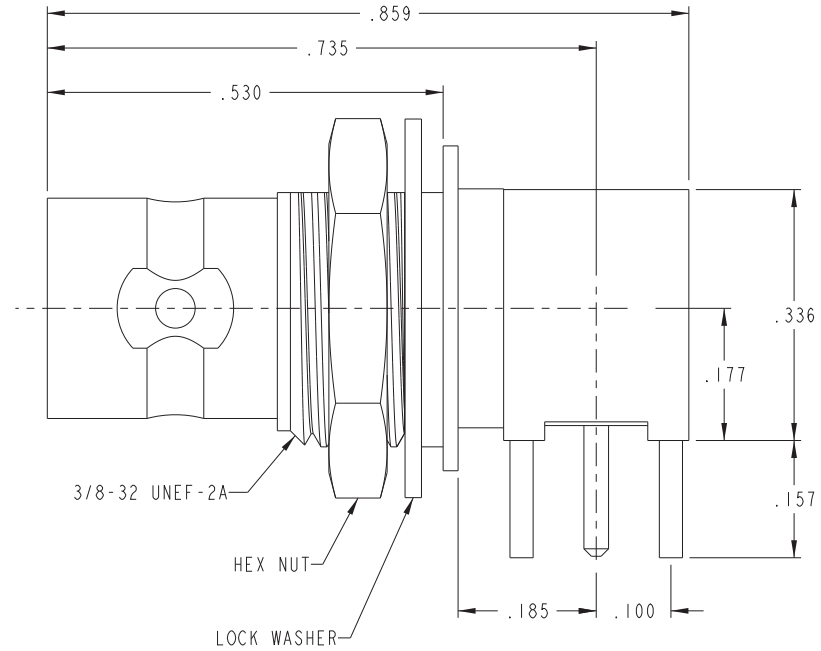
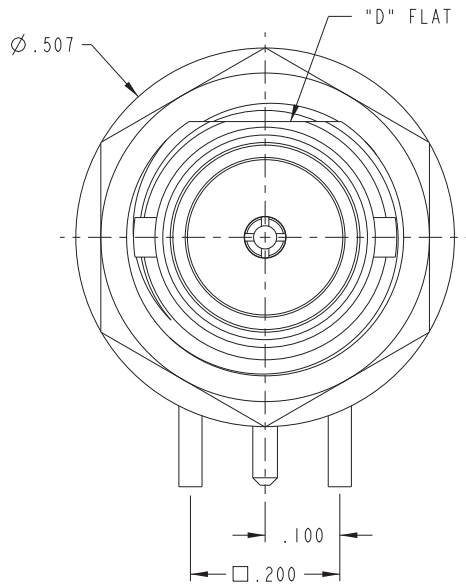
Tel: +86-755-8981 8866 Fax: +86-755-8427 6832

Email & Skype: info@chipsmall.com Web: www.chipsmall.com

Address: A1208, Overseas Decoration Building, #122 Zhenhua RD., Futian, Shenzhen, China



ZONE	REV	ECO	DESCRIPTION	APPROVER	DATE
	B	16804		L. MEIER	1/21/09
	C	54070		C. MONAHAN	2/24/12



NOTES: UNLESS OTHERWISE SPECIFIED.

1. 75Ω FOUR POST RIGHT-ANGLE BULKHEAD CIRCUIT BOARD MOUNT MINI BNC RECEPTACLE.
2. MAXIMUM PANEL THICKNESS .125

RECOMMENDED MOUNTING HOLE PATTERN  
SCALE 5/1

	MODEL NO.	6-0008		TITLE	UCBBJR250	MATERIAL	
		CAGE CODE		14949			
<small>THIS PROPRIETARY DOCUMENT IS PROPERTY OF EMERSON NETWORK POWER CONNECTIVITY SOLUTIONS. IT IS CONFIDENTIAL IN NATURE, NON-TRANSFERABLE, AND ISSUED WITH A CLEAR UNDERSTANDING THAT IT IS NOT TO BE REPRODUCED OR COPIED WITHOUT PERMISSION AND IS RETURNABLE UPON DEMAND.</small>		<small>UNLESS OTHERWISE SPECIFIED</small> UNITS: INCH .XX ± .02 .XXX ± .010 .XXXX ± .001 ANGLE ± 1° 00'	DRAWN BY C. WALLACE DATE 3/27/12	DATE 3/28/12 APPROVED BY C. MONAHAN	DRAWING NO. 6-0008	REV. C	FINISH SCALE 8:1
		SIZE	C	DO NOT SCALE DRAWING	SCALE 8:1	SHEET 1 OF 2	