



Chipsmall Limited consists of a professional team with an average of over 10 year of expertise in the distribution of electronic components. Based in Hongkong, we have already established firm and mutual-benefit business relationships with customers from,Europe,America and south Asia,supplying obsolete and hard-to-find components to meet their specific needs.

With the principle of “Quality Parts,Customers Priority,Honest Operation,and Considerate Service”,our business mainly focus on the distribution of electronic components. Line cards we deal with include Microchip,ALPS,ROHM,Xilinx,Pulse,ON,Everlight and Freescale. Main products comprise IC,Modules,Potentiometer,IC Socket,Relay,Connector.Our parts cover such applications as commercial,industrial, and automotives areas.

We are looking forward to setting up business relationship with you and hope to provide you with the best service and solution. Let us make a better world for our industry!



Contact us

Tel: +86-755-8981 8866 Fax: +86-755-8427 6832

Email & Skype: info@chipsmall.com Web: www.chipsmall.com

Address: A1208, Overseas Decoration Building, #122 Zhenhua RD., Futian, Shenzhen, China



THIS DRAWING IS UNPUBLISHED.

RELEASED FOR PUBLICATION DEC ,2005.

© COPYRIGHT 2005 By -

ALL RIGHTS RESERVED.

LOC	DIST	REVISIONS			
P	LTR	DESCRIPTION	DATE	DWN	APVD
E	B	B	ECO-14-000450	13APR2014	RZ MY

NOTES:

1 SINGLE PACKING: ONE CONNECTOR PER LABELED BAG PACKAGED. LABELED PER TEC-107-115

2 TRAY PACKAGED

3 Ni PLATING

4 Au PLATING

5. ELECTRICAL CHARACTERISTICS

FREQUENCY RANGE:	DC - 1 GHz
NOMINAL IMPEDANCE:	75 Ohm
INSULATION RESISTANCE:	5000 MOhm
WORKING VOLTAGE:	500 Volts RMS at Sea Level
DIELECTRIC WITHSTAND VOLTAGE:	1500 Volts RMS Max
CONTACT RESISTANCE:	
CENTER CONTACT:	1.50 mOhm Max
OUTER CONTACT:	1.00 mOhm Max
VSWR @ 0.3 GHz:	1.8 Max
INSERTION LOSS @ 0.3 GHz:	0.8 dB MAX

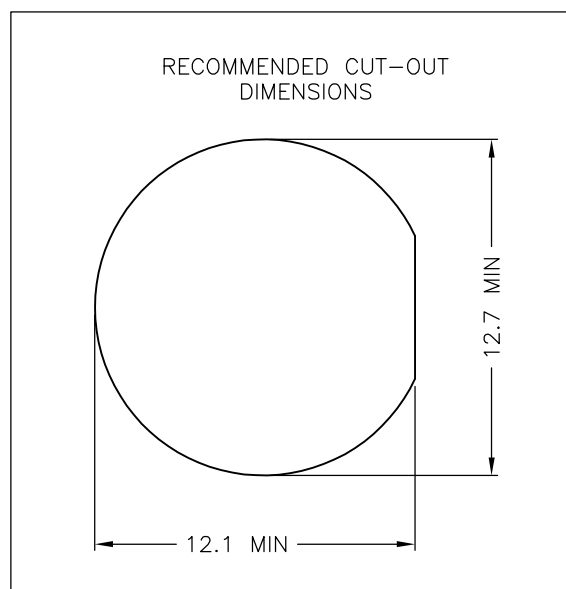
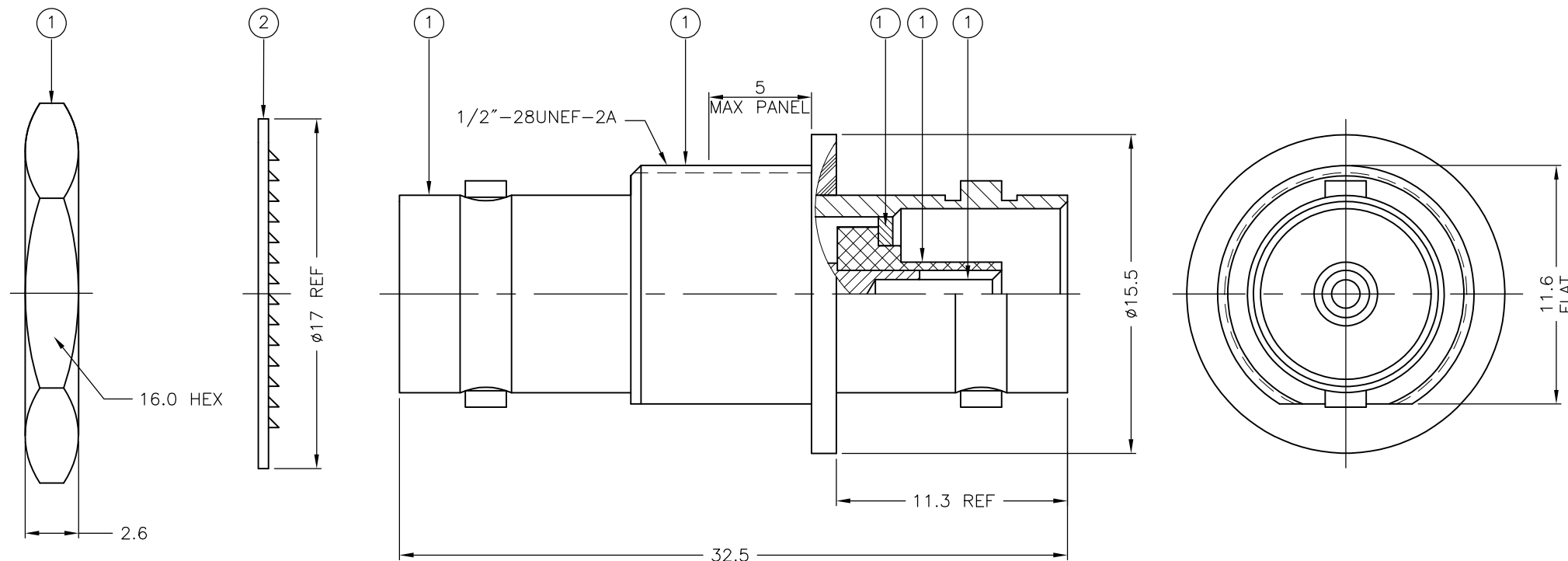
6. MECHANICAL CHARACTERISTICS

DURABILITY: 500 Cycles Min

7. ENVIRONMENTAL CHARACTERISTICS

OPERATING TEMPERATURE: -40 to +60 DegC

8. SUPPLIED SEMI-ASSEMBLED (PACK CONTAINS LOOSE PIECES)



QTY	PLC	QTY	MATERIAL	NOTE	DESCRIPTION	ITEM
1	1	1	BRASS	4	CENTER CONTACT	7
2	2	2	POM		DIELECTRIC	6
1	1	1	BRASS	3	WASHER	5
1	1	1	ABS		ISOLATOR	4
1	1	1	BRASS	3	BODY	3
1	1	1	STEEL	3	LOCKWASHER	2
1	1	1	BRASS	3	NUT	1
6--0	1--0		MATERIAL		DESCRIPTION	ITEM
2	1					
QUANTITY PER ASSY		PARTS LIST				

THIS DRAWING IS A CONTROLLED DOCUMENT.		DWN	R GOODALL	12-9-01	STE TE Connectivity		
DIMENSIONS: mm		CHK	F W-KING	12-9-01			
TOLERANCES UNLESS OTHERWISE SPECIFIED:		APVD	F W-KING	12-9-01	NAME		
0 PLC ± -		PRODUCT SPEC		BNC INSULATED BULKHEAD ADAPTOR JACK 75 OHM			
1 PLC ± 0.2		APPLICATION SPEC		-			
2 PLC ± 0.1		WEIGHT		-			
3 PLC ± -		SIZE		A3	CAGE CODE	00779	
4 PLC ± -		DRAWING NO		C-1478238		RESTRICTED TO	
ANGLES ± -		CUSTOMER DRAWING		SCALE		NTS	
FINISH -		SHEET		1 OF 1		REV	
MATERIAL SEE TABLE		REVISIONS		B			