



Chipsmall Limited consists of a professional team with an average of over 10 year of expertise in the distribution of electronic components. Based in Hongkong, we have already established firm and mutual-benefit business relationships with customers from,Europe,America and south Asia,supplying obsolete and hard-to-find components to meet their specific needs.

With the principle of “Quality Parts,Customers Priority,Honest Operation,and Considerate Service”,our business mainly focus on the distribution of electronic components. Line cards we deal with include Microchip,ALPS,ROHM,Xilinx,Pulse,ON,Everlight and Freescale. Main products comprise IC,Modules,Potentiometer,IC Socket,Relay,Connector.Our parts cover such applications as commercial,industrial, and automotives areas.

We are looking forward to setting up business relationship with you and hope to provide you with the best service and solution. Let us make a better world for our industry!



Contact us

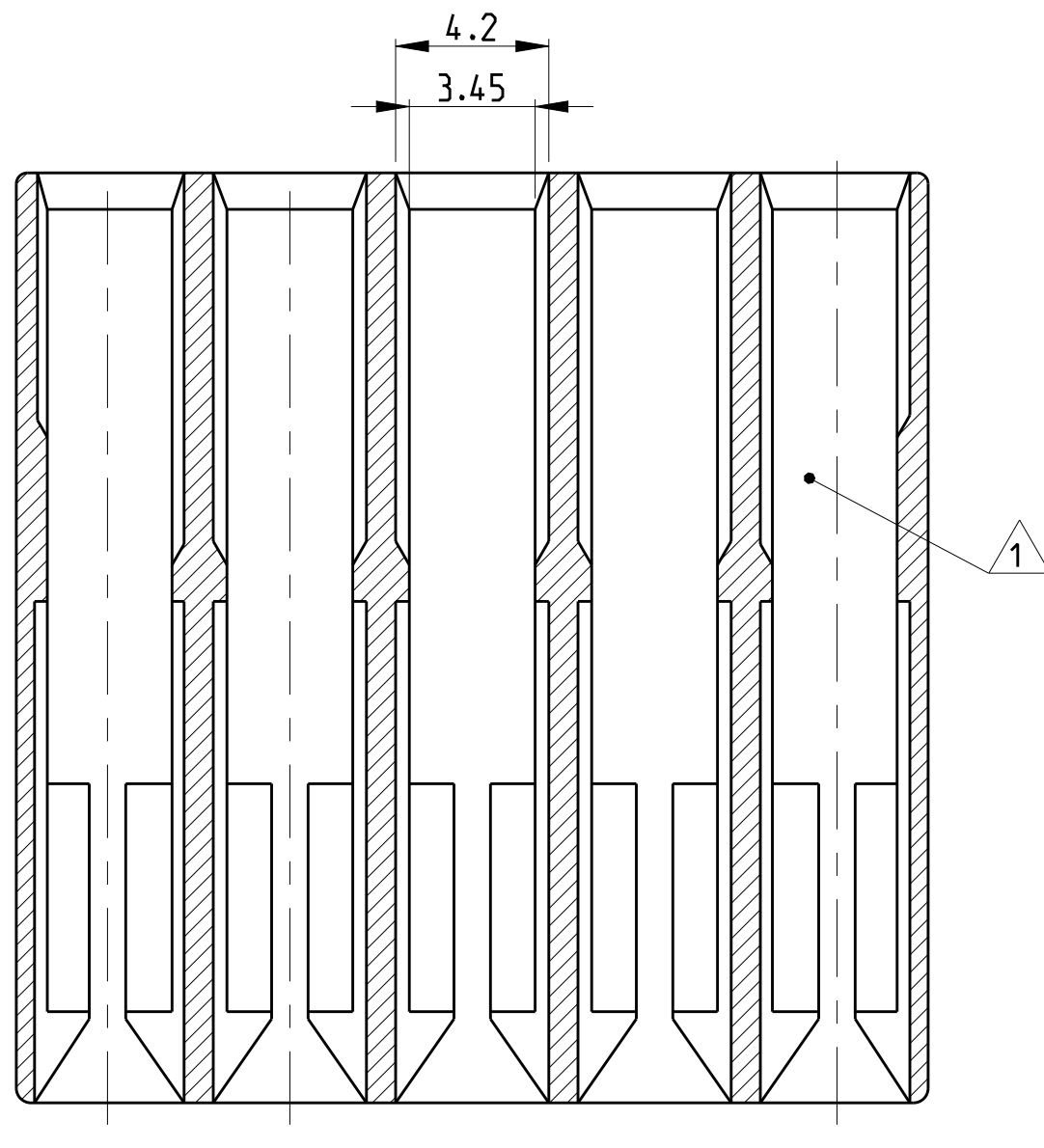
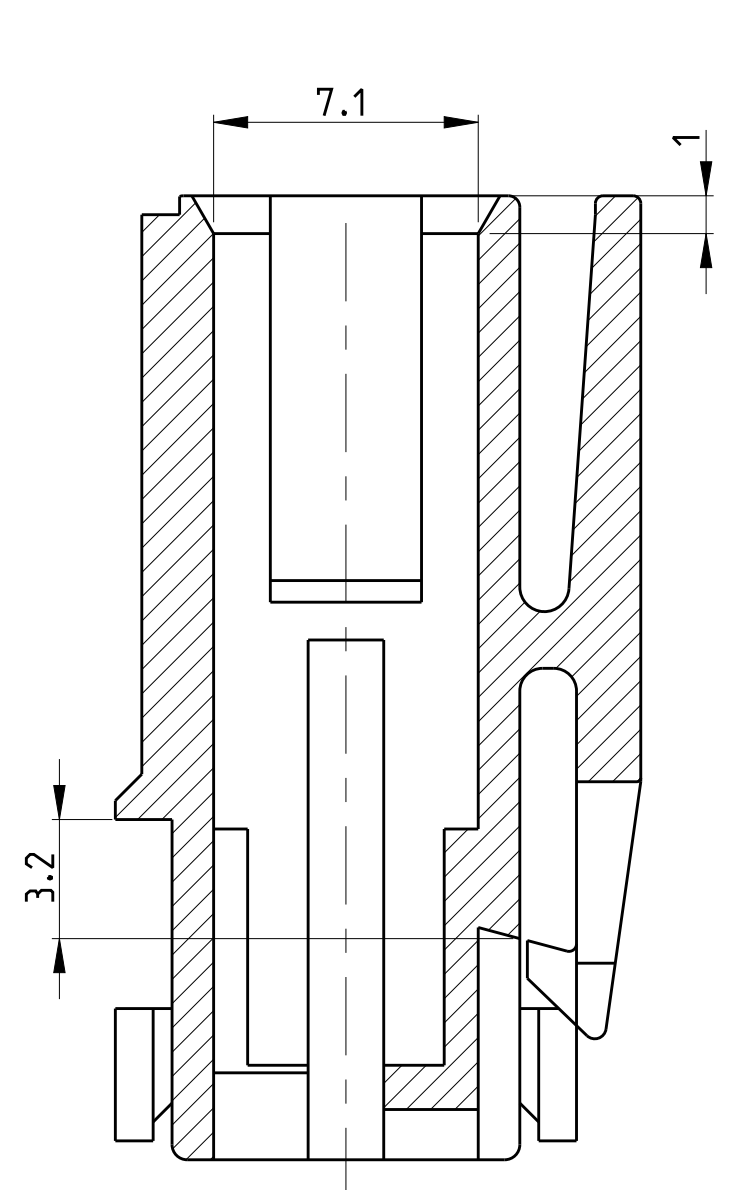
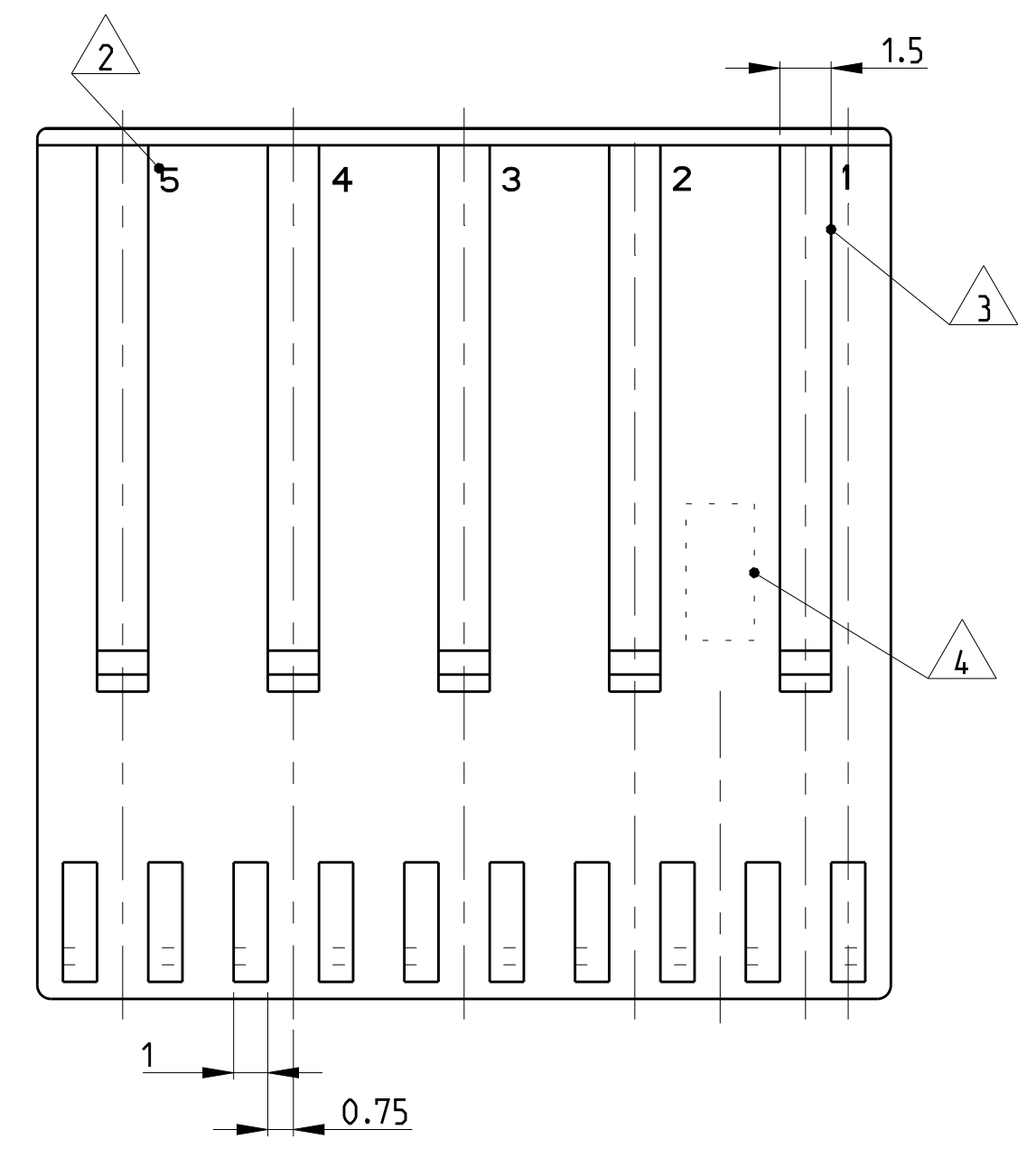
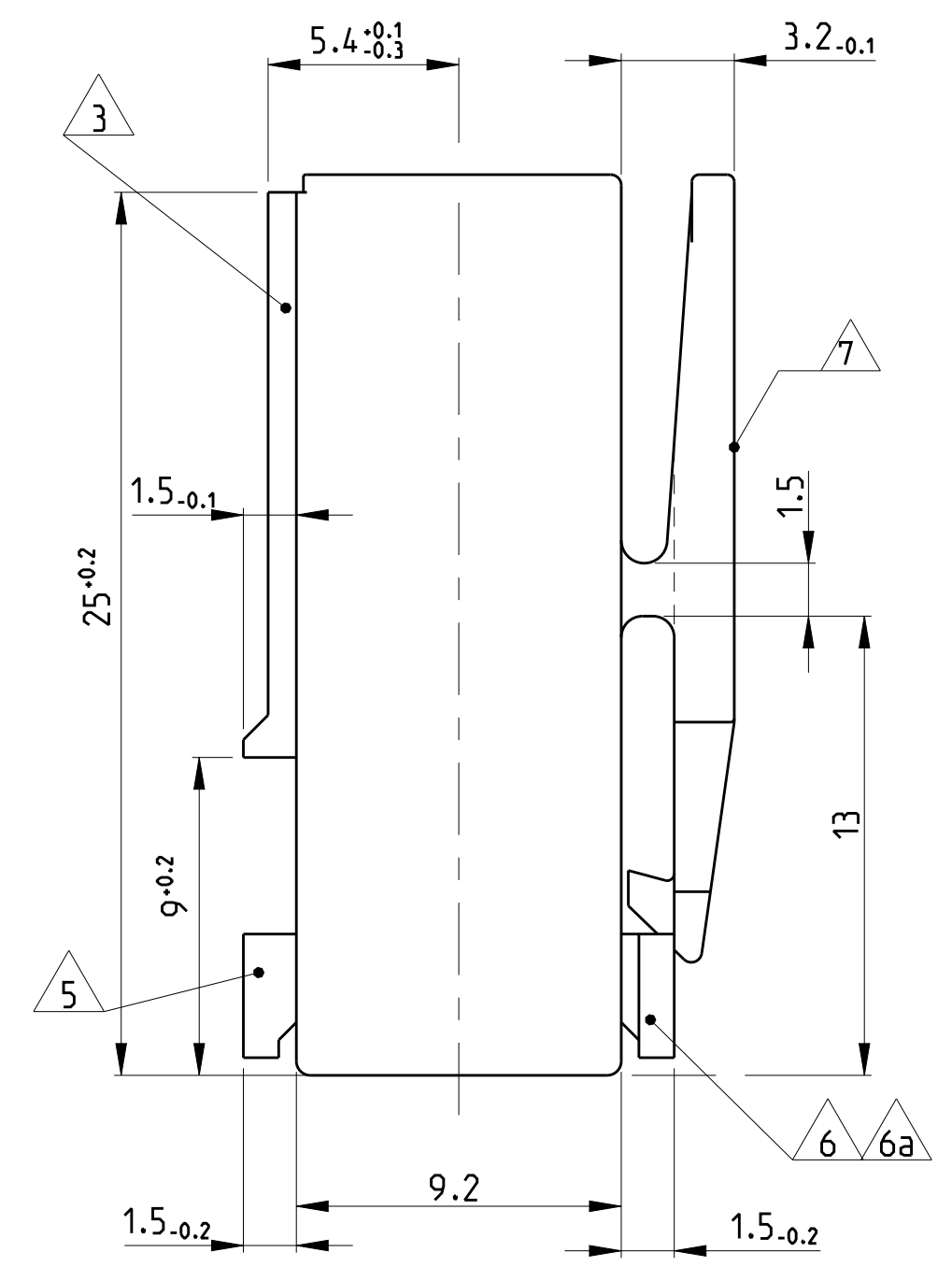
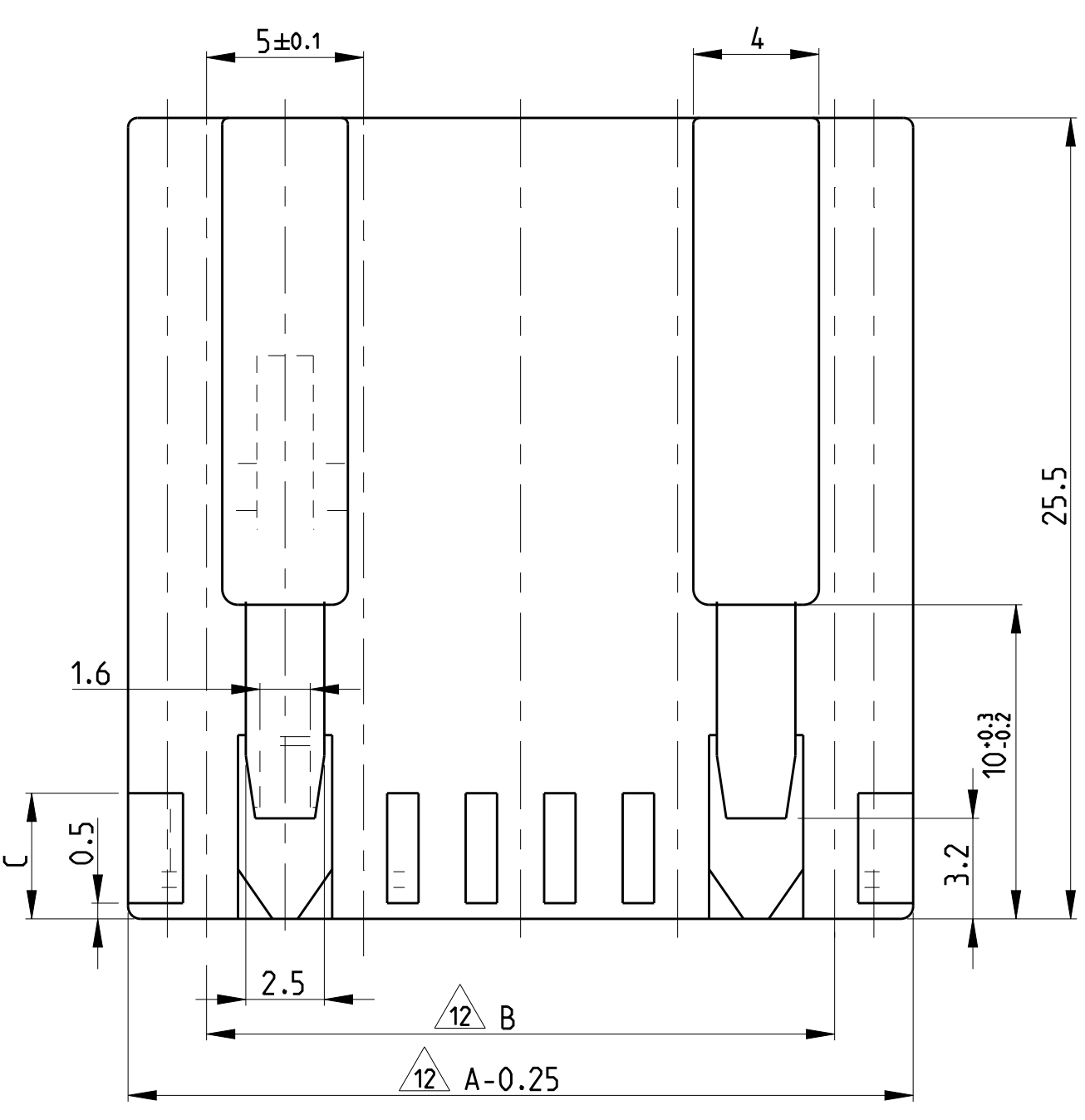
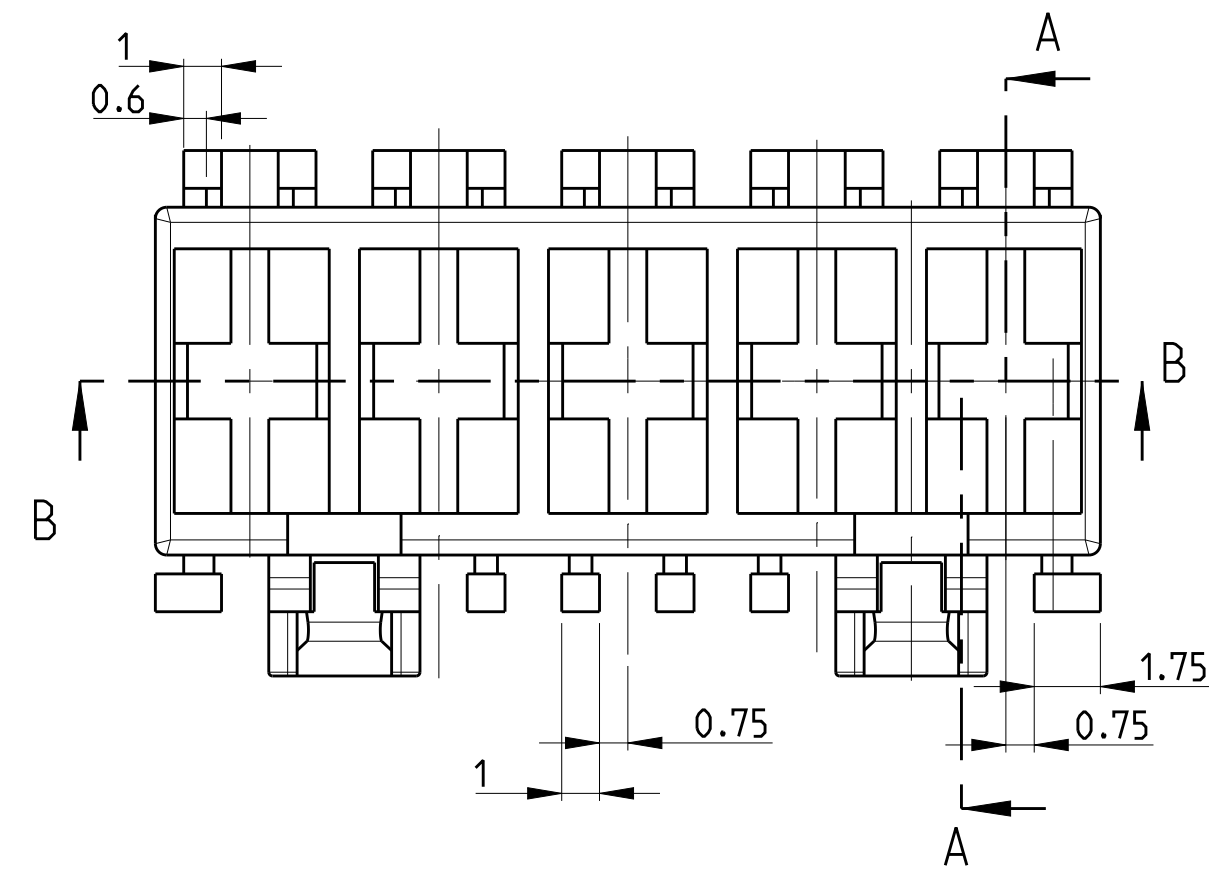
Tel: +86-755-8981 8866 Fax: +86-755-8427 6832

Email & Skype: info@chipsmall.com Web: www.chipsmall.com

Address: A1208, Overseas Decoration Building, #122 Zhenhua RD., Futian, Shenzhen, China

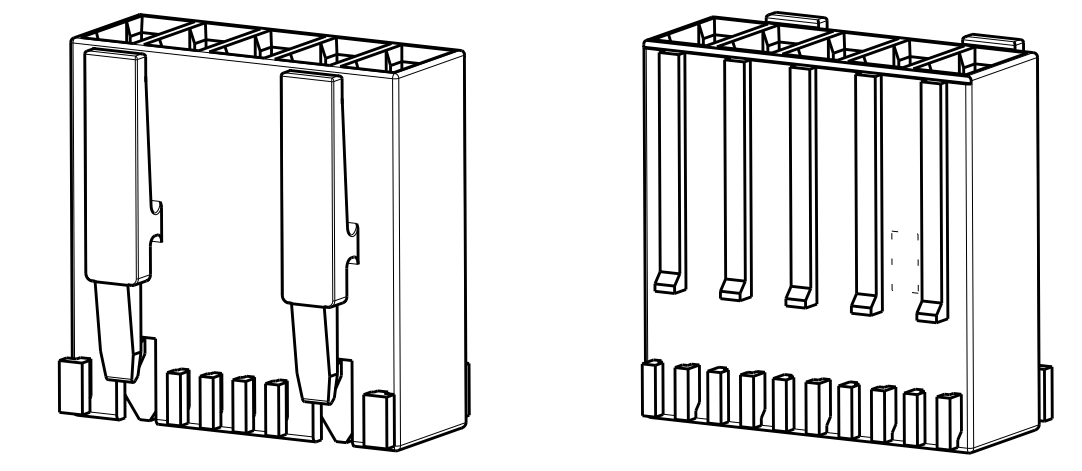


LOC	DIST	REVISIONS					
		P	LTN	DESCRIPTION	DATE	DWN	APVD
C29	ECR-16-002241				17FEB2016	KD	RR
C30	ECR-16-012969				13SEP2016	FV	RR
C31	ECR-17-000741				18JAN2017	KD	RR
C32	ECR-17-003275				07MAR2017	KD	RR



- REMARKS/Bemerkungen**
- 1 CAVITY SUITABLE FOR STANDARD TIMER CONTACTS LISTED IN PROD.SPEC. 108-18049. ITEM 3.3.2
Kammer geeignet für Standard Timer Kontakte gelistet in Prod. Spec. 108-18049. Punkt 3.3.2
 - 2 CONTACT CAVITY NO.
Kontaktkammernummerierung
 - 3 MATING STOP
Tiefenanschlag
 - 4 AREA FOR TE LOGO ACC. TO SPEC 202-36
Bereich für TE Logo nach Spec. 202-36
 - 5 POLARIZATION RIB POSITION "a" AND/OR "b"
Polarisierungsrippe Position "a" und/oder "b"
 - 6 KEYING RIB POSITION "c" AND/OR "d"
Kodierrippe Position "c" und/oder "d"
 - 6a KEYING RIB POSITION "c" AND/OR "d" AT THE END WALLS OF THE HOUSING
Kodierrippe Position "c" und/oder "d" an den Gehäusestirnseiten
 - 7 LOCKING LATCH
Rasthaken
 - 8 TE PART NO (PN)
TE Bestell Nr. (PN)
 - 9 DESIGN OF THE HOUSINGS ACC. TO RAST 5 STANDARD
Gehäuseausführung gemäss RAST 5 Vorgabe
 - 10 GENERAL SUITABLE TAB HEADER SEE RAST 5 PERFORMANCE
Generell passende Flachsteckerwannen siehe RAST 5 Vorgabe
 - 11 PACKAGING: BULK PACKAGING IN CORRUGATED BOX PN 740580-2
2 POS. 2500 PIECES PER BOX / 3 POS. 2000 PIECES PER BOX
Verpackung: Schüttgut in Versandkarton Pn 740580-2
2pol. 2500 Stück per Karton / 3pol. 2000 Stück per Karton
 - 12 DIMENSION A, B AND C SEE SHEET 2 OF 3
 - 13 MATERIAL CORRESPONDS TO THE REQUIREMENT EN 60335
(INCL. GLOW WIRE TEST 750° WITHOUT FLAME)
Material entspricht den Anforderungen der EN 60335
(inkl. Glühdrahttest 750° ohne Flamme)
 - 14 RATIO NUMBER OF THE KEYING VERSION, INKJET PRINTED. SEE SHEET 2
Kodierungskennnummer, mit Tintenstrahl drucker aufgebracht. siehe Blatt 2
 - 15 PRELIMINARY- NOT RELEASED FOR PRODUCTION

5 POSITION
STD. TIMER MARK-II HOUSING



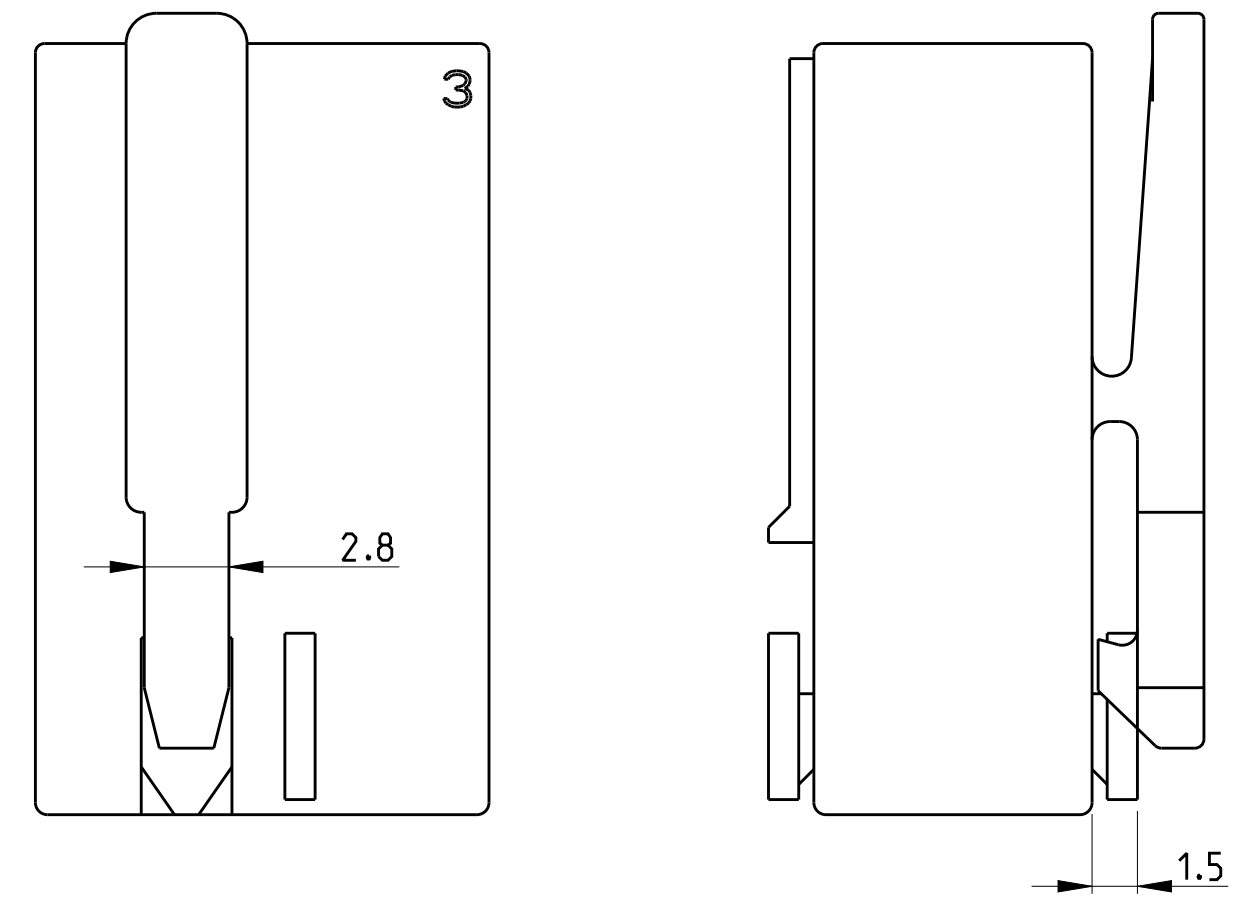
SCALE 2:1

SECTION A-A / Schnitt A-A

SECTION B-B / Schnitt B-B

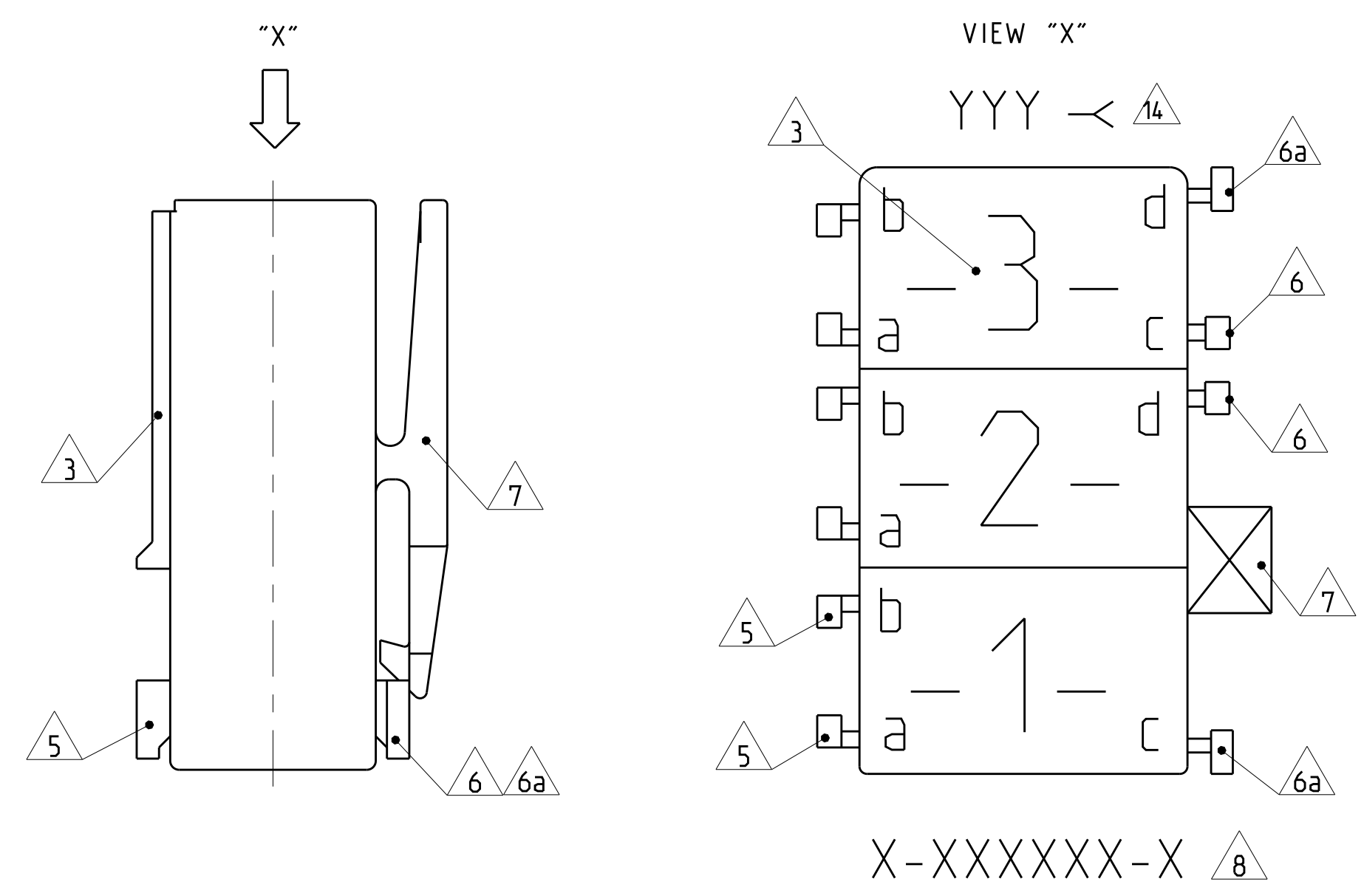
THIS DRAWING IS A CONTROLLED DOCUMENT.		DWN: Kishor M. 18-10-07	TE Connectivity
DIMENSIONS: mm		CHK: K. Munz 18-10-07	
TOLERANCES UNLESS OTHERWISE SPECIFIED:		APVD: Th. Klenner 18-10-07	NAME: STANDARD TIMER HSG. RAST 5 MARK II Standard Timer Gehäuse RAST 5 Mark II
0 PLC ±0.2 1 PLC ±0.2 2 PLC ±0.2 3 PLC ±0.2 4 PLC ±0.2 ANGLES FINISH *		PRODUCT SPEC: 108-18049 APPLICATION SPEC:	
MATERIAL: SEE TABLE SHEET 2 OF 3		WEIGHT: -	SIZE: A1 CAGE CODE: 00779 DRAWING NO: 1241961 RESTRICTED TO: -
Customer Drawing		SCALE: 5:1	SHEET: 1 OF 3 REV: C32

ONLY 5-1241961-7, 1-1241961-9, 7-1241961-7



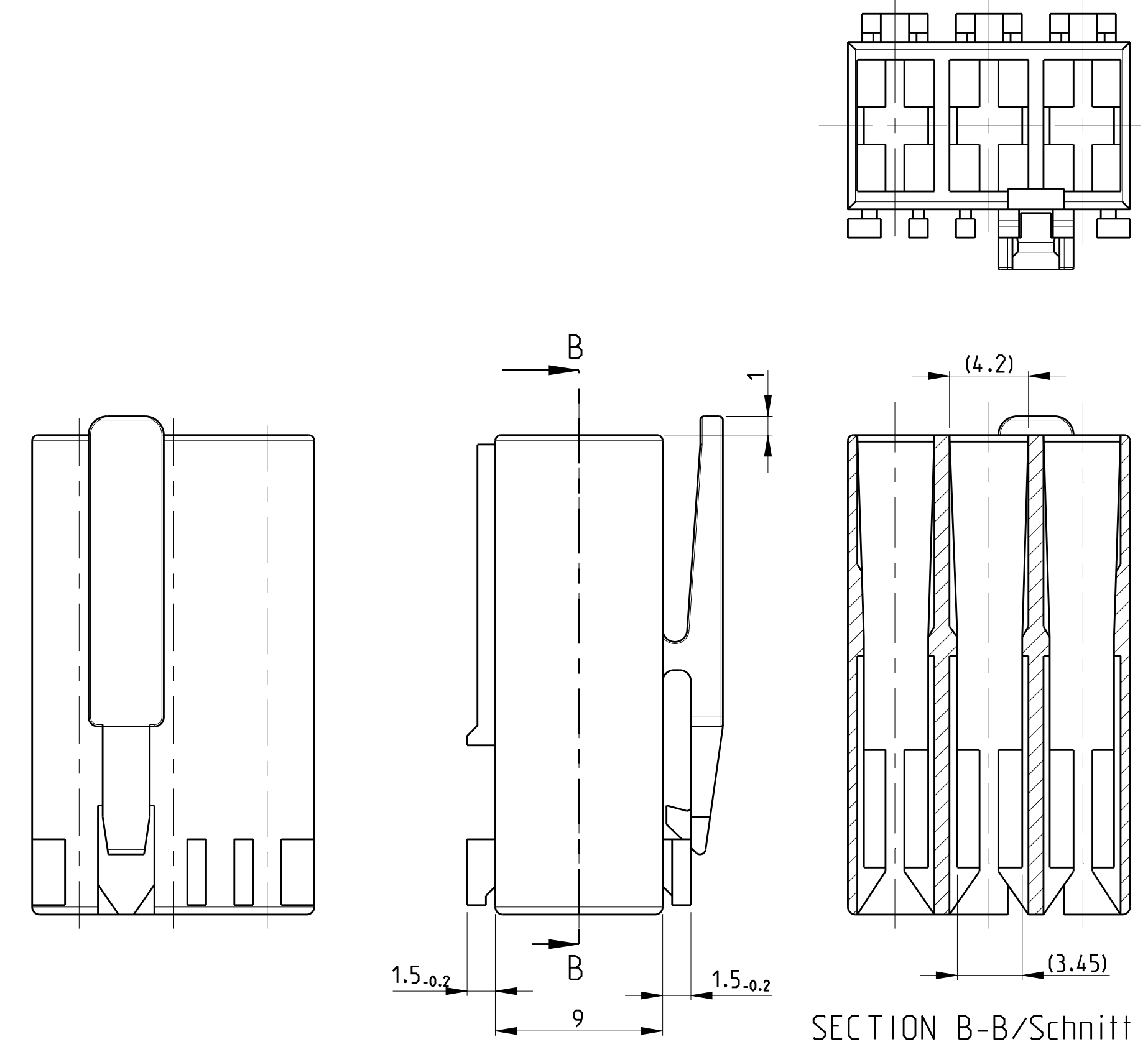
ALL OTHER DIMENSIONS SEE SHEET 1 OF 3

KEY LAYOUT DESCRIPTION



PAY ATTENTION !
DIFFERENT CAVITY GEOMETRY AND LOCKING LATCH OVERHANG
Bitte beachten !
Unterschiedliche Kammergeometrie und Rasthakenuberstand.

FOR 2 POS. AND 3 POS.



ALL OTHER DIMENSIONS SEE SHEET 1 OF 3
Alle anderen Masse siehe Seite 1 von 3

SPECIAL MATERIAL							
PRELIMINARY	1955507-4	4	20	15	PA66	NATURAL	1
PRELIMINARY	9-1955506-2	2	6	10	UL 94 V0	NATURAL	1

PART NO	POS	DIMENSION C	DIM A	DIMM B	MATERIAL	COLOUR /Farbe	REV./Rev.
6-1241961-7	3	15	10	10	PA 6 UL94V-2	NATURAL	1
4-1241961-7	3	15	10	10	PA 6 UL94V-2	NATURAL	A
3-1241961-7	3	15	10	10	PA 6 UL94V-2	NATURAL	A
1-1955422-7	3	15	10	10	PA 66 UNFILLED UL94 V0	NATURAL	A
5-1955422-7	3	15	10	10	PA 66 UNFILLED UL94 V0	NATURAL	A
4-1955422-3	2	6	10	5	PA 66 UNFILLED UL94 V0	NATURAL	A
2-1241817-3	3	4 or 6	15	10	PA 66 UL94 V-2	Green	E
0-1955422-6	3	15	10	10	PA 66 UNFILLED UL94 V0	NATURAL	A
8-1241961-8	3	15	10	10	PA 6 UL94V-2	natural	C
0-1241961-8	3	15	10	10	PA 6 UL94V-2	natural	A
8-1241961-3	2	10	5	5	PA 6 UL94V-2	natural	C
3-1241961-1	2	10	5	5	PA 6 UL94V-2	NATURAL	C
0-1955422-1	2	10	5	5	PA 66 UNFILLED UL94 V0	NATURAL	A

LOC	DIST	P	LTR	DESCRIPTION	DATE	DWN	APVD
0-1241959-5	5			25	20		
4-1241959-4	4			20	15		
2-1241959-4	4	4		20	15		
0-1241959-4	4			20	15		
2-1241817-5	5			25	20		
0-1241817-5	5			25	20		
3-1241817-4	4			20	15		
2-1241817-4	4	6		20	15		
0-1241817-4	4			20	15		
2-1241983-2				10	5		
1-1241983-2				10	5		
0-1241983-2	2	4		10	5		
8-1241983-2				10	5		
5-1241983-3				10	5		
6-1241983-2				10	5		
9-1241961-8		4		15	10		
6-1241961-8		4 or 6		15	10		
5-1241961-8		4		15	10		
4-1241961-8		4 or 6		15	10		
7-1241961-8		4		15	10		
1-1241961-8	3	4 or 6		15	10		
3-1241961-8		6		15	10		
2-1241961-8				15	10		
2-1241961-7				15	10		
1-1241961-7		4		15	10		
9-1241961-9				15	10		
0-1241961-6				15	10		
3-1241961-3				10	5		
2-1241961-2				10	5		
5-1241961-2				10	5		
4-1241961-3				10	5		
7-1241961-2				10	5		
6-1241961-3				10	5		
3-1241961-2	2	4		10	5		
5-1241961-3				10	5		
6-1241961-2				10	5		
0-1241961-3				10	5		
8-1241961-2				10	5		
9-1241961-2				10	5		
0-1241961-1				10	5		
9-969484-9	3	6		15	10		
2-969484-8				15	10		
4-969484-8		4 or 6		15	10		
0-969484-8				15	10		
9-969484-7		4		15	10		
8-969484-7				15	10		
7-969484-7				15	10		
6-969484-7				15	10		
5-969484-7		4		15	10		
4-969484-7				15	10		
3-969484-7		4		15	10		
2-969484-7				15	10		
1-969484-7	3	4		15	10		
0-969484-7				15	10		
9-969484-6				15	10		
8-969484-6		6		15	10		
7-969484-6				15	10		
6-969484-6				15	10		
5-969484-6				15	10		
4-969484-6				15	10		
3-969484-6		6		15	10		
2-969484-6				15	10		
1-969484-6				15	10		
0-969484-6				15	10		
9-969484-3				10	5		
8-969484-3		4		10	5		
7-969484-3				10	5		
6-969484-3				10	5		
5-969484-3		4		10	5		
4-969484-3				10	5		
3-969484-3				10	5		
2-969484-3				10	5		
1-969484-3				10	5		
0-969484-3				10	5		
9-969484-2				10	5		
8-969484-2				10	5		
7-969484-2		4		10	5		
6-969484-2				10	5		
5-969484-2				10	5		
4-969484-2				10	5		
3-969484-2		2		10	5		
2-969484-2				10	5		
1-969484-2				10	5		
0-969484-2				10	5		
9-969484-1		6		10	5		
8-969484-1				10	5		
7-969484-1		4		10	5		
6-969484-1				10	5		
5-969484-1		6		10	5		
4-969484-1				10	5		
3-969484-1				10	5		
2-969484-1		4		10	5		
1-969484-1				10	5		
0-969484-1				10	5		

SPECIAL VERSION: UL94 V0 & GWT 750 NF & CTI 350							
5-1241961-7	3	6	15	10	PA66	NATURAL	A
1-1241961-9	3		15	10		NATURAL	A
7-1241961-7	3		15	10		NATURAL	A

SPECIAL VERSION: UL94 V2 & GWT 750 NF							
6-2178575-7	3	4	15	10	PA6 GF15	NATURAL	A

SPECIAL VERSION: UL94 V0 & GWT 750 NF							
3-2178412-7	3	6	15	10	PA66	NATURAL	1
4-2178412-7	3		15	10	UL94 V0 & GWT 750 NF	NATURAL	1
8-2178412-2	2		10	5		NATURAL	1

UL94 V0 & GWT 750 NF							
2315717-1	2	6	10	5	PA66	NATURAL	1
2315717-2	2		10	5		NATURAL	1
2315717-3	2		10	5		NATURAL	1
2315717-4	4		20	15	UL94 V0 & GWT 750 NF	NATURAL	1
2315717-5	4		20	15		NATURAL	1
2315717-6	3		15	10		NATURAL	1
2315717-7	3		15	10		NATURAL	1

THIS DRAWING IS A CONTROLLED DOCUMENT. DWG: Kishor M 18-10-07, CHK: K.Muriz 18-10-07, APVD: T.Klenner 18-10-07

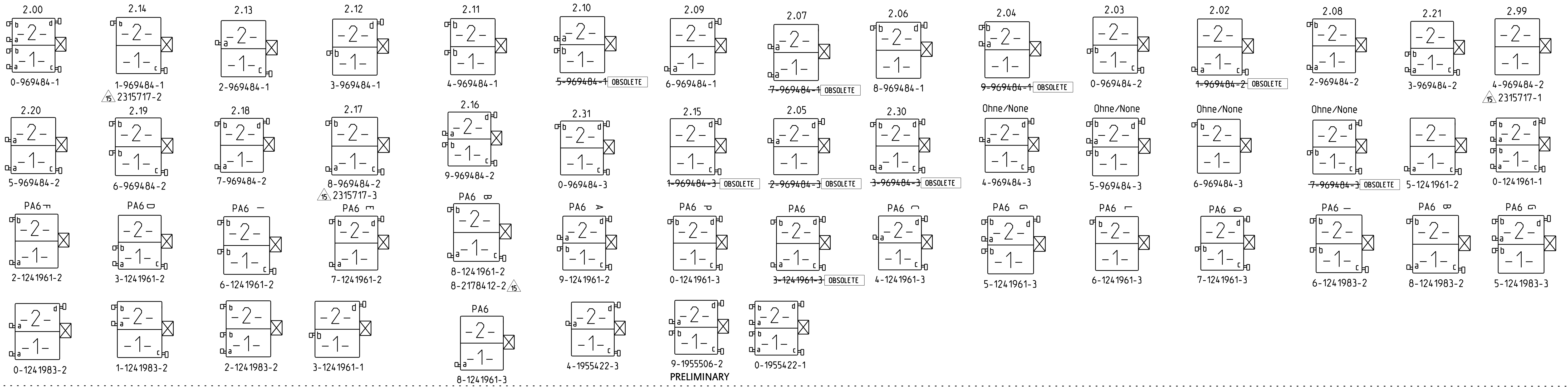
STANDARD TIMER HSG. RAST 5 MARK II
Standard Timer Gehäuse RAST 5 Mark II

SIZE: A1, CAGE CODE: 00779, DRAWING NO: 1241961, SHEET 2 OF 3

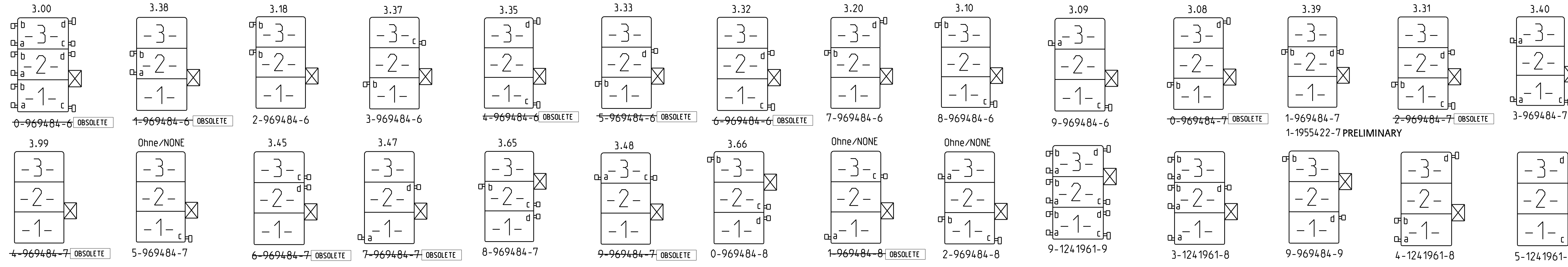
Customer Drawing

REV	DATE	BY	APPV	DESCRIPTION
1	18-10-07	K. Kishor	M	TE Connectivity
2	18-10-07	K. Kishor	M	TE Connectivity
3	18-10-07	T. Klanner		TE Connectivity

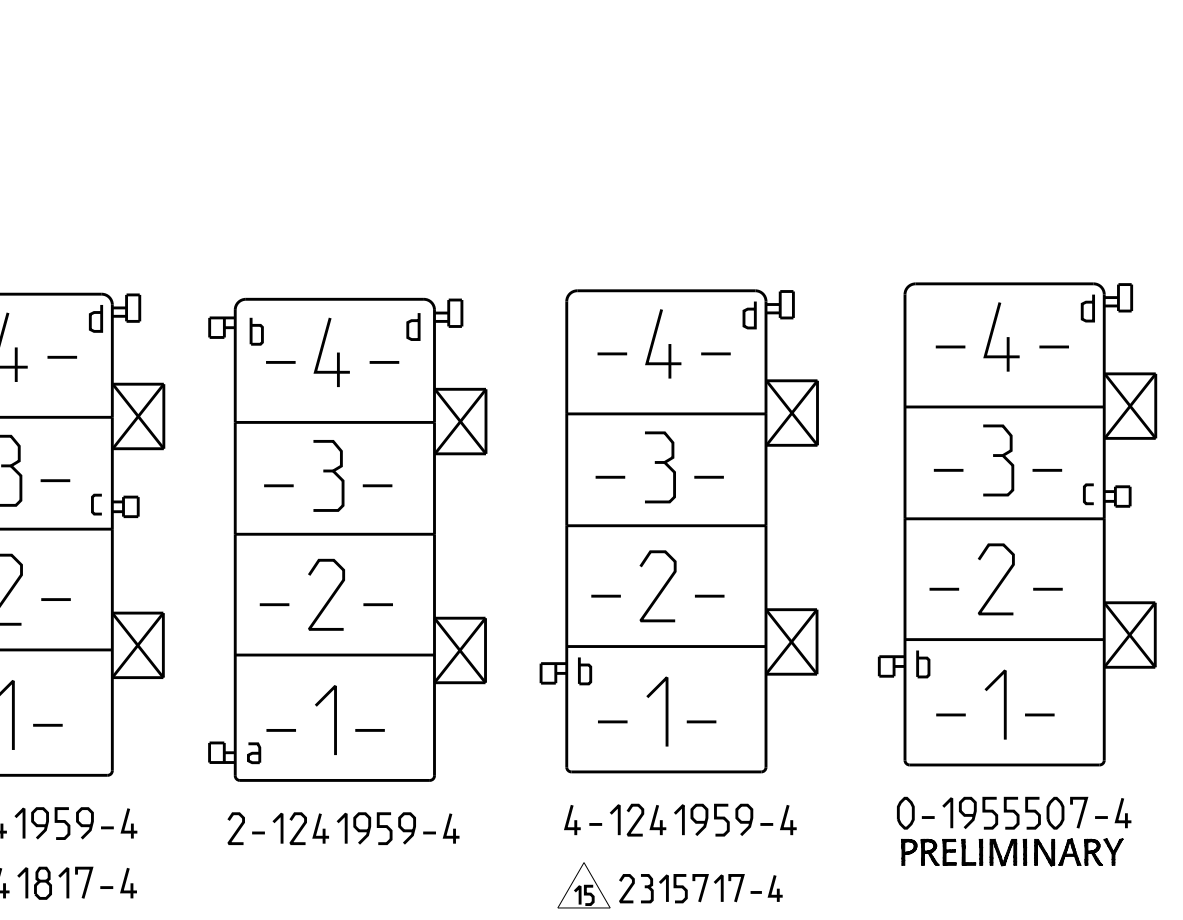
2 POSITION VARIANTS



3 POSITION VARIANTS



4 POSITION VARIANTS



5 POSITION VARIANTS

