



Chipsmall Limited consists of a professional team with an average of over 10 year of expertise in the distribution of electronic components. Based in Hongkong, we have already established firm and mutual-benefit business relationships with customers from,Europe,America and south Asia,supplying obsolete and hard-to-find components to meet their specific needs.

With the principle of “Quality Parts,Customers Priority,Honest Operation,and Considerate Service”,our business mainly focus on the distribution of electronic components. Line cards we deal with include Microchip,ALPS,ROHM,Xilinx,Pulse,ON,Everlight and Freescale. Main products comprise IC,Modules,Potentiometer,IC Socket,Relay,Connector.Our parts cover such applications as commercial,industrial, and automotives areas.

We are looking forward to setting up business relationship with you and hope to provide you with the best service and solution. Let us make a better world for our industry!



Contact us

Tel: +86-755-8981 8866 Fax: +86-755-8427 6832

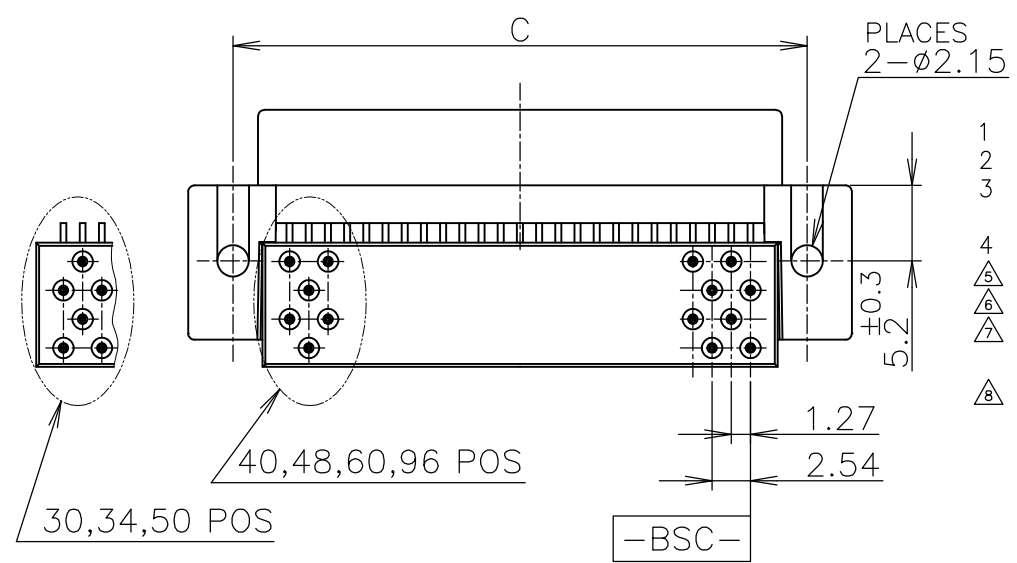
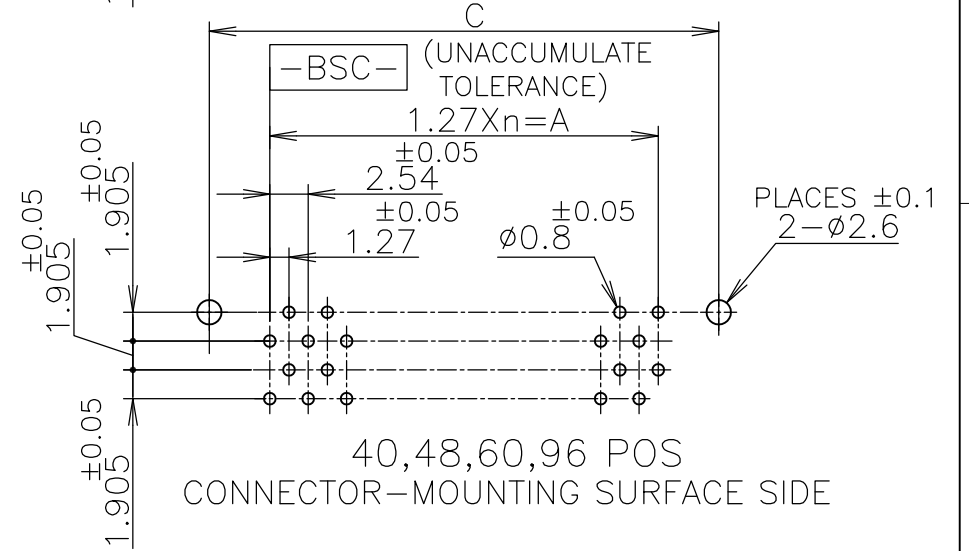
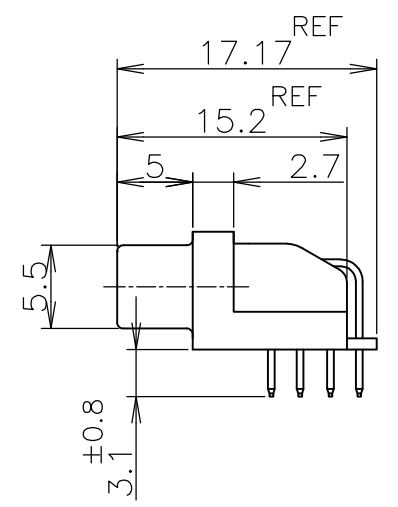
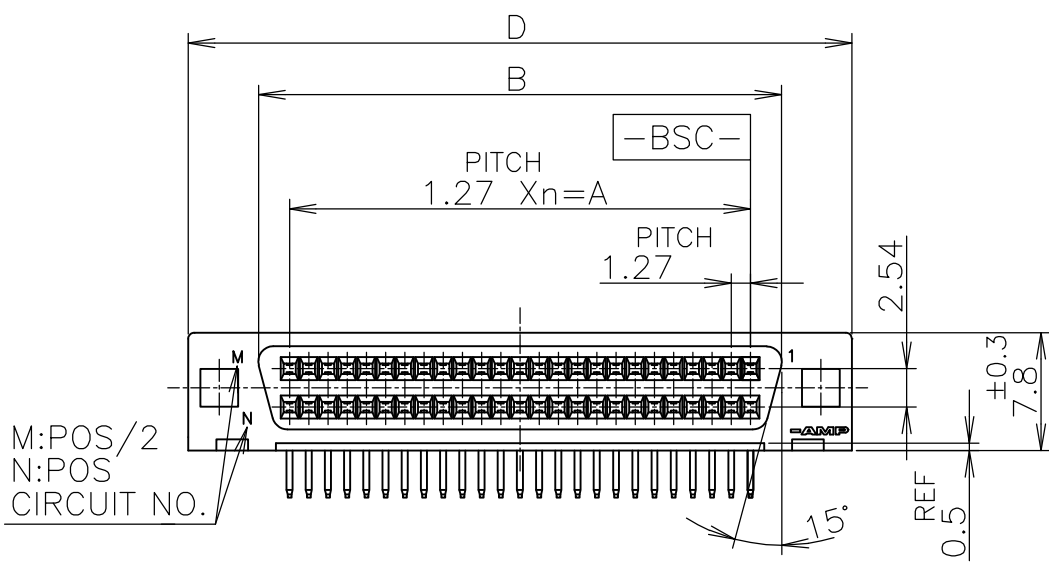
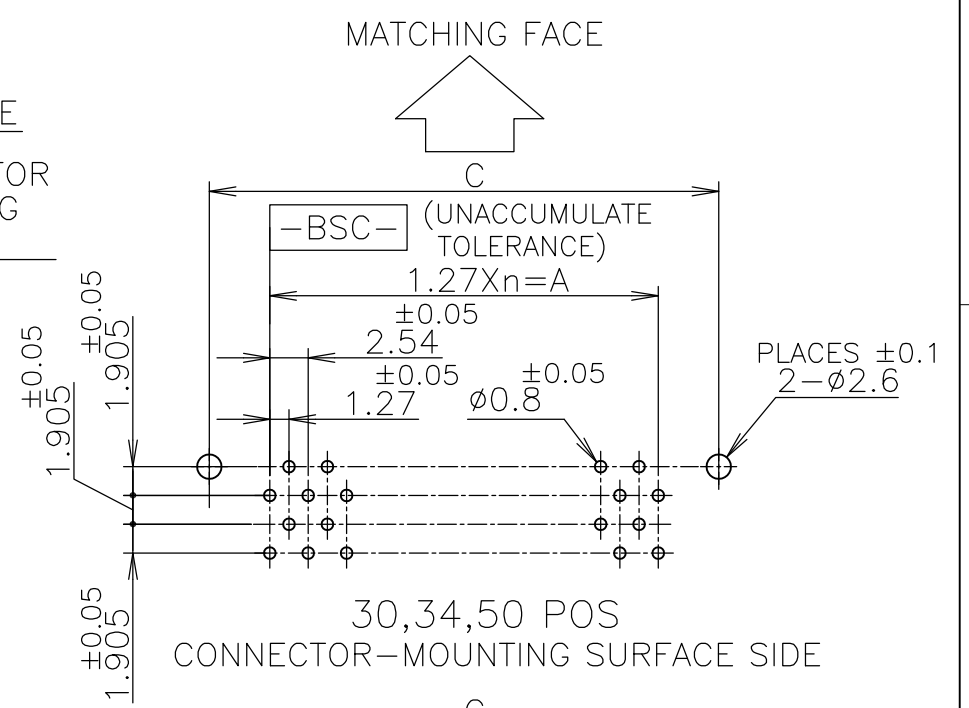
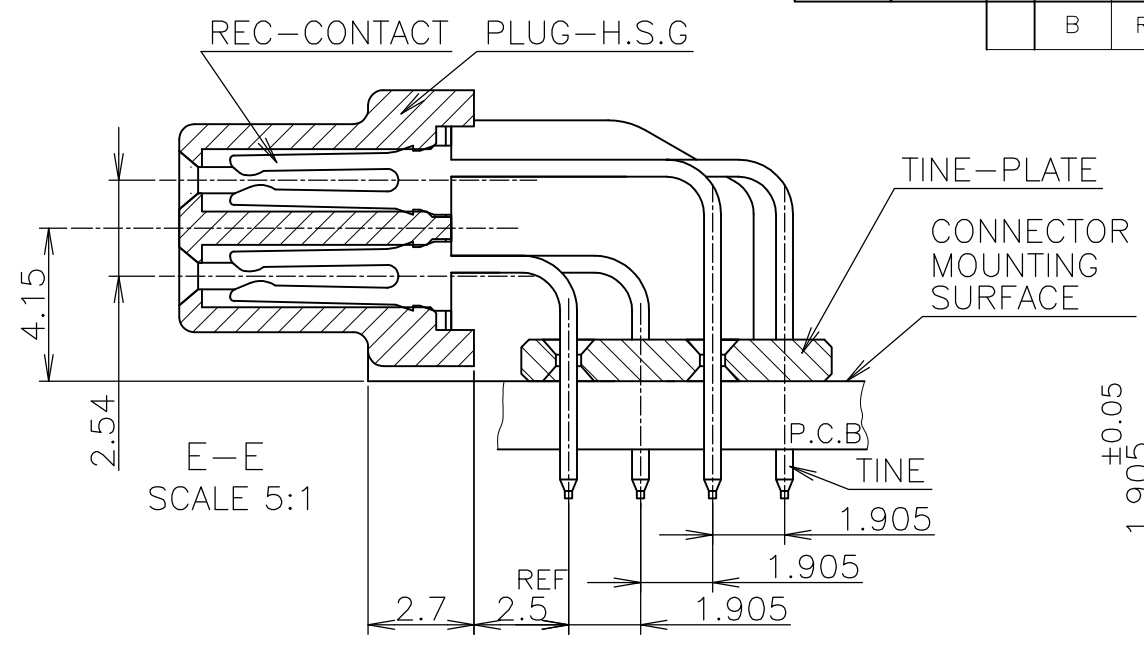
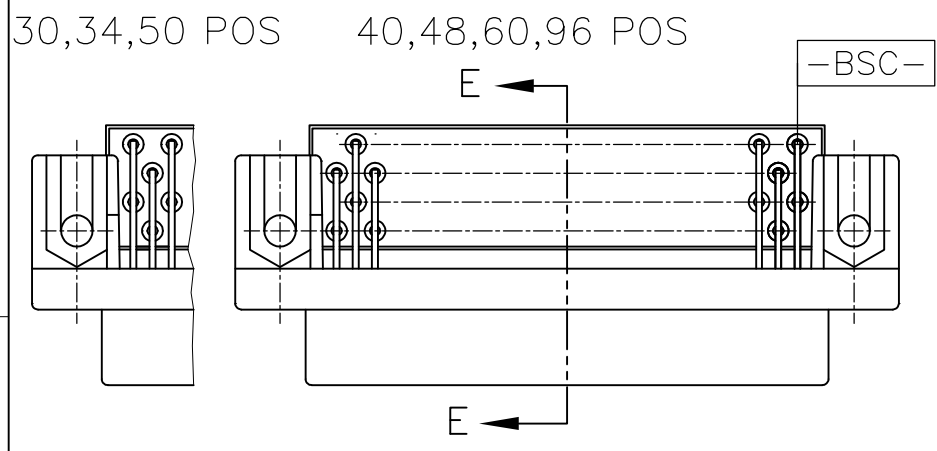
Email & Skype: info@chipsmall.com Web: www.chipsmall.com

Address: A1208, Overseas Decoration Building, #122 Zhenhua RD., Futian, Shenzhen, China



THIS DRAWING IS UNPUBLISHED. RELEASED FOR PUBLICATION AUG. 2004.
 © COPYRIGHT 2004 By - ALL RIGHTS RESERVED.

LOC	DIST	REVISIONS			
P	LTR	DESCRIPTION	DATE	DWN	APVD
J		REVISED PER ECO-14-006391	24MAY2014	AP	SB



- 1 USE A P.C.B WHOSE SURFACES ARE TREATED WITH SOLDER RESIST.
 - 2 SHOW P.C.B LAYOUT FROM THE CONNECTOR-MOUNTING SURFACE SIDE.
 - 3 NUMBER THE CONTACTS IN THE P.C.B OR CONNECTOR CONSECUTIVELY FROM THE -BSC- SIDE.
 - 4 WHEN SCREWING THE CONNECTOR TO THE P.C.B, USE M2 SCREW, NUT AND WASHERS.
- △ HOUSING MATERIAL : GLASS 20% FILLED P.B.T RESIN (UL94-V0). COLOR:BLACK
 - △ CONTACT MATERIAL : PHOSPHOR BRONZE.
 - △ FINISH : NICKEL 0.00127 MIN THK OVERALL SELECTIVE GOLD 0.0002 MIN THK ON CONTACT AREA AND TIN 0.001MIN THK ON TINE AREA.
 - △ OBSOLETE PARTS: OBSOLETE CIS STREAMLINING PER D.RENAUD/D.SINISI

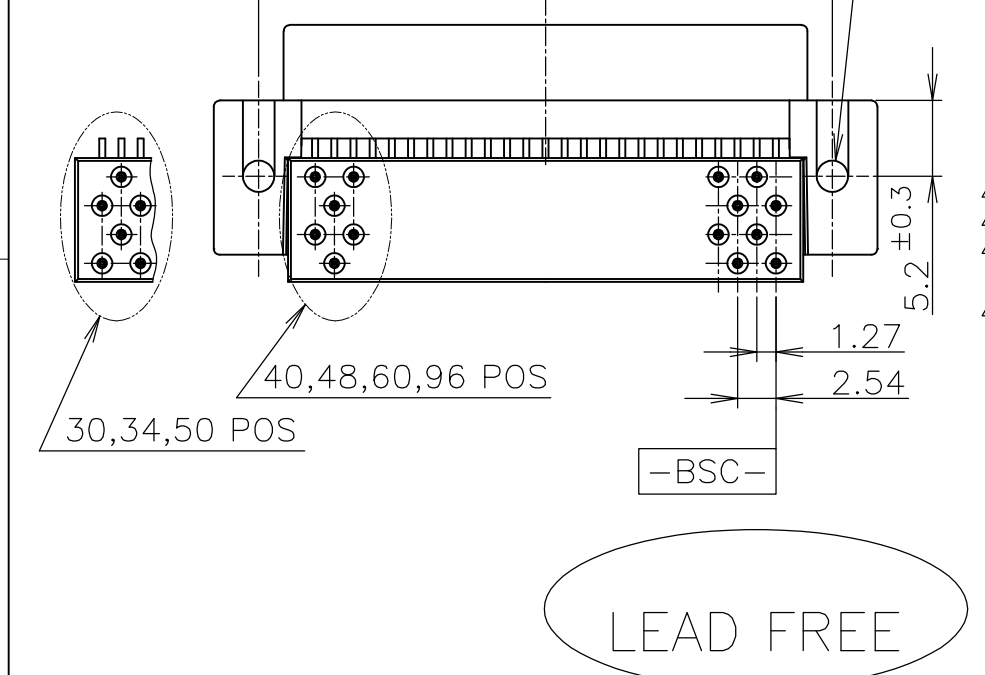
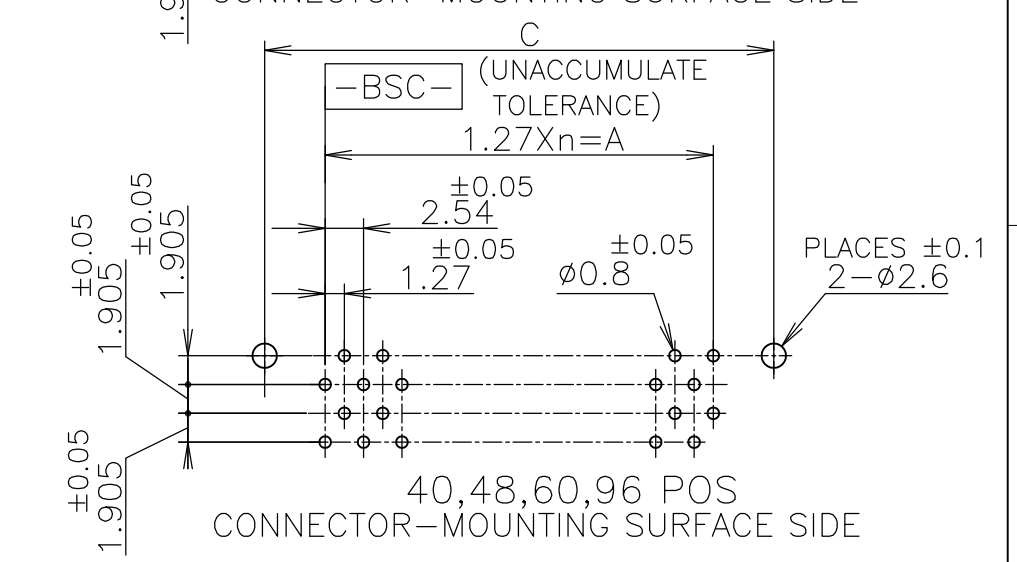
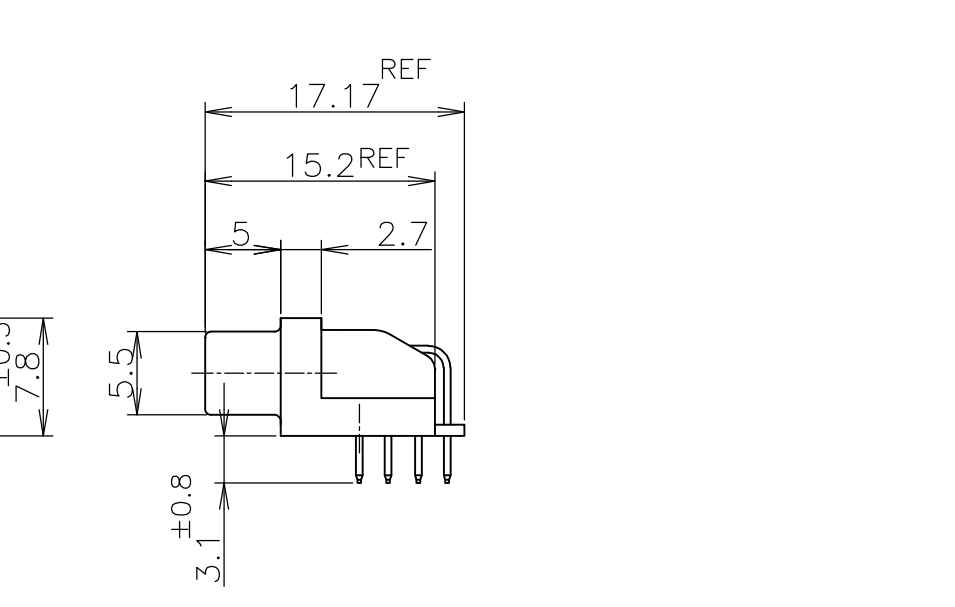
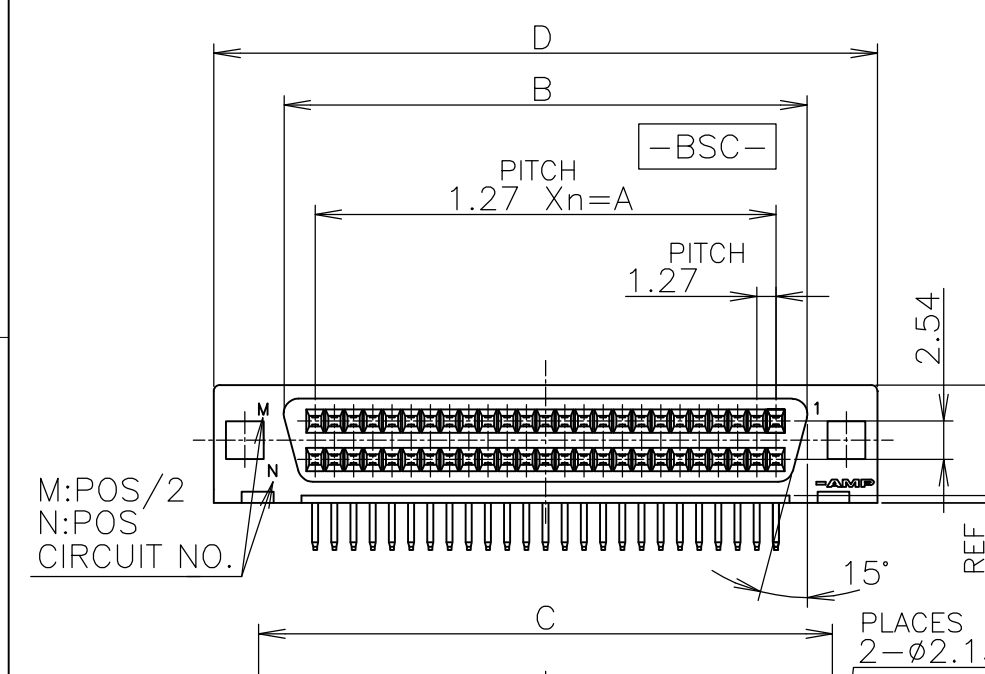
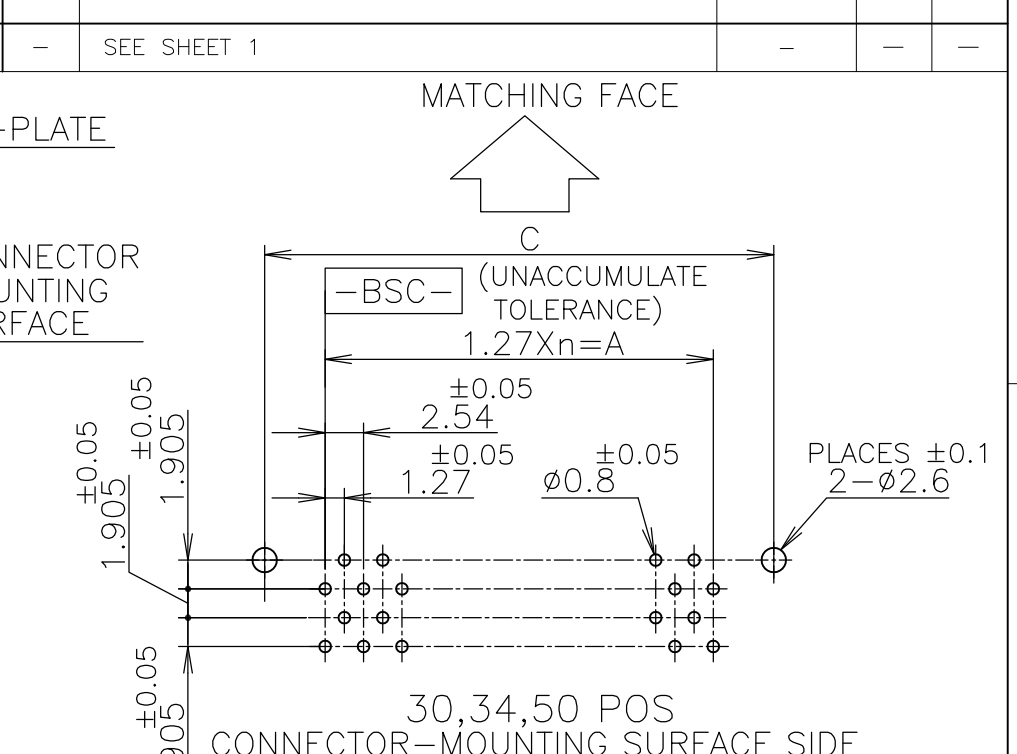
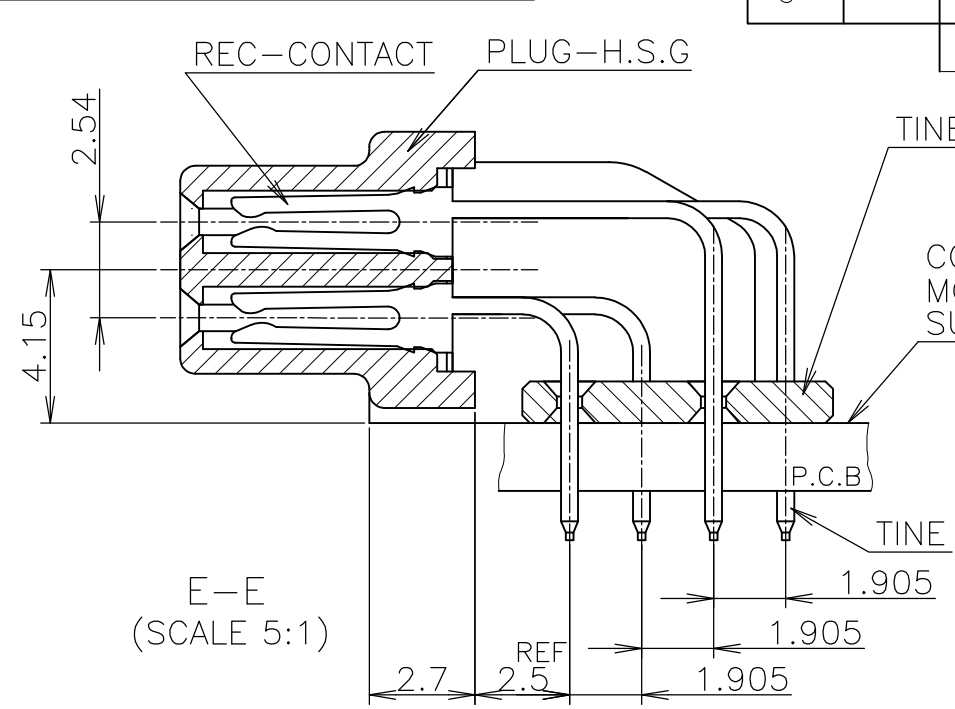
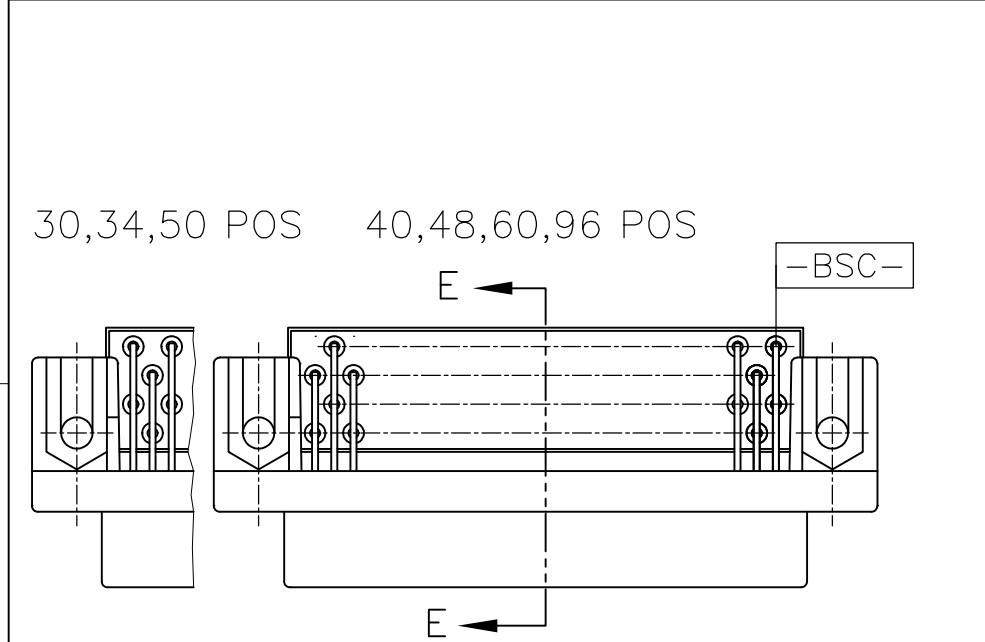
OBSOLETE	-8	96	47	59.61	63.86	67.09	73.09
NOT RELEASED	-6	48	23	29.21	33.38	36.61	42.61
△	-5	34	16	20.32	24.49	27.72	33.72
△	-4	60	29	36.83	41.00	44.23	50.23
△	-3	50	24	30.48	34.65	37.88	43.88
OBSOLETE	-2	40	19	24.13	28.30	31.53	37.53
△	5173277-1	30	14	17.78	21.95	25.18	31.18
	P/N	POS	n	A	B	C	D

LEAD FREE

GENERAL TOLERANCE

10 ≥ : ±0.2
30 ≥ > 10: ±0.25
100 ≥ > 30: ±0.3
ANGLES: ±3°

THIS DRAWING IS A CONTROLLED DOCUMENT.		DWN	COREL WANG	20AUG04
DIMENSIONS: mm		CHK	STEVEN YAO	23AUG04
TOLERANCES UNLESS OTHERWISE SPECIFIED:		APVD	I.ENOMOTO	23AUG04
0 PLC ±		NAME		
1 PLC ±		PLUG ASSY HORIZONTAL		
2 PLC ±		AMPLIMITE .050 SERIES I B-TO-B CONN.		
3 PLC ±		SIZE		
4 PLC ±		CAGE CODE		
ANGLES ±		DRAWING NO		
FINISH		RESTRICTED TO		
MATERIAL	参照 △△	A300779 C-5173277		
CUSTOMER DRAWING		SCALE	2:1	SHEET 1 OF 2
		REV B		



- 1 USE A P.C.B. WHOSE SURFACES ARE TREATED WITH SOLDER RESIST. SHOW P.C.B LAYOUT FROM THE CONNECTOR-MOUNTING SURFACE SIDE. NUMBER THE CONTACTS IN THE P.C.B OR CONNECTOR CONSECUTIVELY FROM THE -BSC- SIDE.
- 2
- 3
- 4 WHEN SCREWING THE CONNECTOR TO THE P.C.B, USE M2 SCREW, NUT AND WASHERS.
- △ HOUSING MATERIAL : GLASS 20% FILLED P.B.T RESIN (UL94-V0). COLOR:BLACK
- △ CONTACT MATERIAL : PHOSPHOR BRONZE.
- △ FINISH : NICKEL 0.00127 MIN THK OVERALL SELECTIVE GOLD 0.00076 MIN THK ON CONTACT AREA AND TIN 0.001MIN THK ON TINE AREA.
- △ OBSOLETE PARTS: OBSOLETE CIS STREAMLINING PER D.RENAUD/D.SINISI

OBSOLETE	6	8	96	47	59.61	63.86	67.09	73.09
OBSOLETE	6	6	48	23	29.21	33.38	36.61	42.61
	6	5	34	16	20.32	24.49	27.72	33.72
	6	4	60	29	36.83	41.00	44.23	50.23
OBSOLETE	6	3	50	24	30.48	34.65	37.88	43.88
	6	2	40	19	24.13	28.30	31.53	37.53
OBSOLETE	6	1	30	14	17.78	21.95	25.18	31.18
	P/N	POS	n	A	B	C	D	

THIS DRAWING IS A CONTROLLED DOCUMENT.	
DIMENSIONS: mm	TOLERANCES UNLESS OTHERWISE SPECIFIED:
0 PLC ± -	1 PLC ± -
2 PLC ± -	3 PLC ± -
4 PLC ± -	ANGLES ± -
MATERIAL 参照 △△	FINISH 参照 - △
GENERAL TOLERANCE 10 ≥ : ±0.2 30 ≥ > 10: ±0.25 100 ≥ > 30: ±0.3 ANGLES: ±3°	

DWN COREL WANG 20AUG2004	STE TE Connectivity	
CHK STEVEN YAO 23AUG2004	NAME	
APVD I.ENOMOTO 23AUG2004	PRODUCT SPEC 108-10036	
APPLICATION SPEC	PLUG ASSY HORIZONTAL AMPLIMITE .050 SERIES I B-TO-B CONN.	
WEIGHT	SIZE A3	CAGE CODE 00779
CUSTOMER DRAWING	DRAWING NO C-5173277	RESTRICTED TO
SCALE 2:1	SHEET 2 OF 2	REV B