



Chipsmall Limited consists of a professional team with an average of over 10 year of expertise in the distribution of electronic components. Based in Hongkong, we have already established firm and mutual-benefit business relationships with customers from,Europe,America and south Asia,supplying obsolete and hard-to-find components to meet their specific needs.

With the principle of "Quality Parts,Customers Priority,Honest Operation,and Considerate Service",our business mainly focus on the distribution of electronic components. Line cards we deal with include Microchip,ALPS,ROHM,Xilinx,Pulse,ON,Everlight and Freescale. Main products comprise IC,Modules,Potentiometer,IC Socket,Relay,Connector.Our parts cover such applications as commercial,industrial, and automotives areas.

We are looking forward to setting up business relationship with you and hope to provide you with the best service and solution. Let us make a better world for our industry!



Contact us

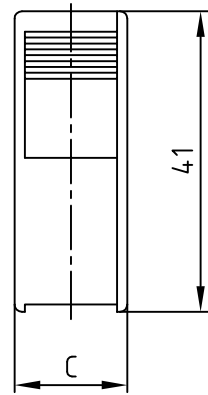
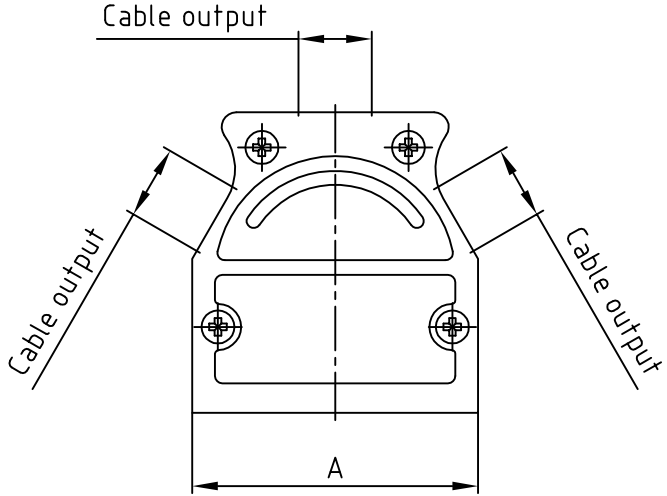
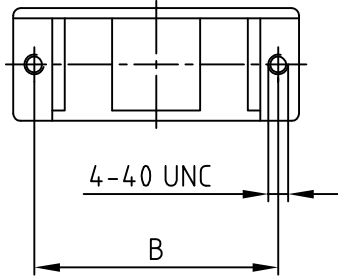
Tel: +86-755-8981 8866 Fax: +86-755-8427 6832

Email & Skype: info@chipsmall.com Web: www.chipsmall.com

Address: A1208, Overseas Decoration Building, #122 Zhenhua RD., Futian, Shenzhen, China



used for: D-SUB



(b)

No. of pos.	A	B	C	Part No:
9	31.0	25.0	14.8	600X51109X
15	39.2	33.3	14.8	600X51115X
25	53.0	47.0	14.8	600X51125X
37	69.4	63.5	14.8	600X51137X
50	67.0	61.1	17.4	600X51150X

Directive 2002/95/EC RoHS compliant

THIS DRAWING MAY NOT BE COPIED OR REPRODUCED IN ANY WAY, AND MAY NOT BE PASSED ON TO A THIRD PARTY WITHOUT WRITTEN PERMISSION.
OWNERSHIP AND COPYRIGHT OF CONEC GmbH
DO NOT ALTER CAD DRAWING BY HAND

				tolerance			
				2002	date	name	
				drawn	28.02.	Parei	
				appd.	28.02.	E. Mickenbecker	
				norm	DIN41652		
				d-old	KAT18QA		
1 x b	Ä4.912	04.09.2013	K.H.				
a	Original						
rev.	description	date	name				

scale: 1:1	
material: DIE-CAST	
title: Metal hood 9 - 50 pos., EMI/RFI shielding with 2-3 cable output	
dwg no: AutoCAD 2000	DIN-A 4
part no: SEE TABLE	