



Chipsmall Limited consists of a professional team with an average of over 10 year of expertise in the distribution of electronic components. Based in Hongkong, we have already established firm and mutual-benefit business relationships with customers from,Europe,America and south Asia,supplying obsolete and hard-to-find components to meet their specific needs.

With the principle of “Quality Parts,Customers Priority,Honest Operation,and Considerate Service”,our business mainly focus on the distribution of electronic components. Line cards we deal with include Microchip,ALPS,ROHM,Xilinx,Pulse,ON,Everlight and Freescale. Main products comprise IC,Modules,Potentiometer,IC Socket,Relay,Connector.Our parts cover such applications as commercial,industrial, and automotives areas.

We are looking forward to setting up business relationship with you and hope to provide you with the best service and solution. Let us make a better world for our industry!



Contact us

Tel: +86-755-8981 8866 Fax: +86-755-8427 6832

Email & Skype: info@chipsmall.com Web: www.chipsmall.com

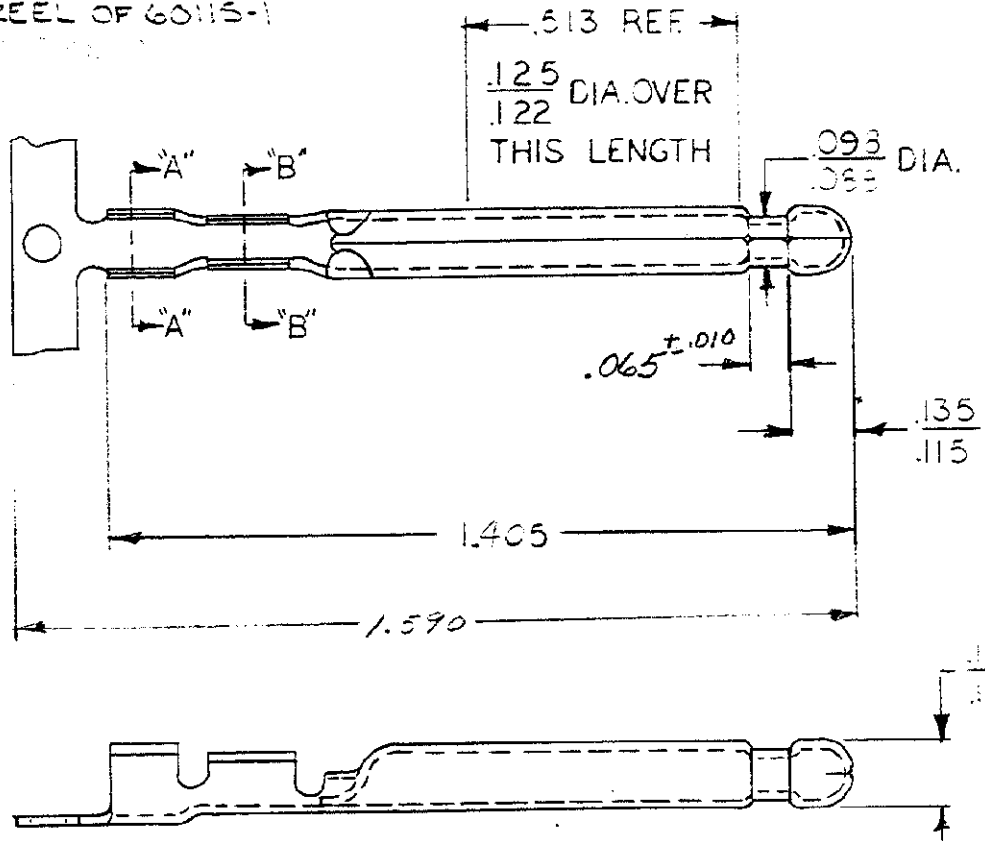
Address: A1208, Overseas Decoration Building, #122 Zhenhua RD., Futian, Shenzhen, China



DRAWING MADE IN AMERICAN PROJECTION

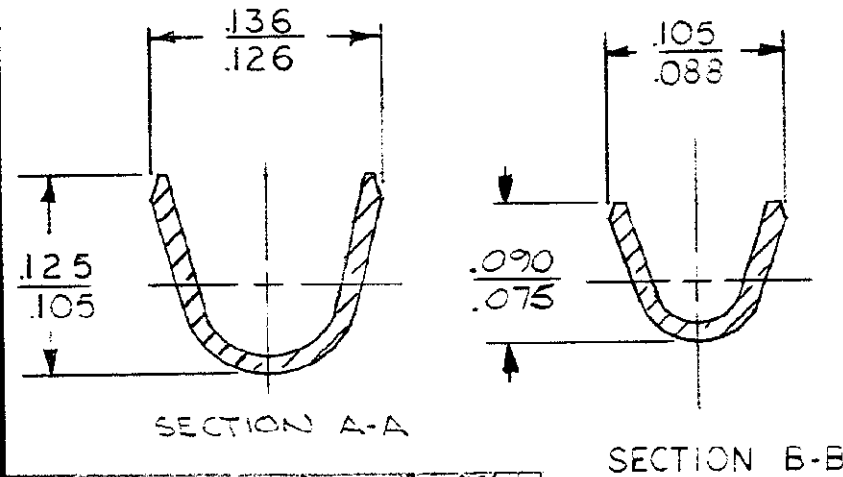
NUMBER 60115

REVERSE REEL OF 60115-1
2.



PART	FINISH
60115-1	NONE
60115-2	SILVER
60115-3	PRE-TIN
60115-4 Δ	NONE

DIMENSIONS IN INCHES. DO NOT SCALE PRINT.



K	REV PER AF-6703				
J	ADD 60115-4	TTI	2/21/75	2-21-75	
H	REV 60115-3	AF	6-3-74	6-3-74	
G	OBE 60115-2	A4534	2/1/75	2-25-75	
F	REVISED	A	10-25-74	10-25-74	
E	REVISED	A	8-27-75	8-27-75	
D	ADD 60115-3	TTI	7-30-75	7-30-75	
C	REVISED	A	1-22-75	1-22-75	
B	REDRAWN	A-2058	2/4/72	2/4/72	

©1960 BY AMP INCORPORATED. ALL RIGHTS RESERVED. AMP PRODUCTS COVERED BY PATENTS AND/OR PATENTS PENDING.

MATERIAL AND FINISH
.016 BRASS
SEE TABLE

WIRE RANGE INSULATION
22-20 1090-375

TOLERANCE EXCEPT AS NOTED
 $\pm .015$ $\pm 1^\circ$

SCALE
1:1

CUSTOMER COPY REFERENCE ONLY

AMP AMP INCORPORATED HARRISBURG, PENNA.

CLASS — H —

TYPE — H —

LOG AF **A** NO **60115**

PRINT	DR	DATE	DE	CHK	DATE
50	LK ESPENSHADE	2-4-71	LE		
	CHK		APP		

NAME **BLANKET PIN - .125 DIA.**