



Chipsmall Limited consists of a professional team with an average of over 10 year of expertise in the distribution of electronic components. Based in Hongkong, we have already established firm and mutual-benefit business relationships with customers from,Europe,America and south Asia,supplying obsolete and hard-to-find components to meet their specific needs.

With the principle of “Quality Parts,Customers Priority,Honest Operation,and Considerate Service”,our business mainly focus on the distribution of electronic components. Line cards we deal with include Microchip,ALPS,ROHM,Xilinx,Pulse,ON,Everlight and Freescale. Main products comprise IC,Modules,Potentiometer,IC Socket,Relay,Connector.Our parts cover such applications as commercial,industrial, and automotives areas.

We are looking forward to setting up business relationship with you and hope to provide you with the best service and solution. Let us make a better world for our industry!



Contact us

Tel: +86-755-8981 8866 Fax: +86-755-8427 6832

Email & Skype: info@chipsmall.com Web: www.chipsmall.com

Address: A1208, Overseas Decoration Building, #122 Zhenhua RD., Futian, Shenzhen, China



Wiha 3/8" Socket Accessories



602 57 3/8" Universal Joint Hard chrome finish, fully polished with spring-loaded retaining ball.

Item			
No.	Inch	mm	wt.
602 57	1.97	50	.13



602 58 3/8" Swivel Handle Hard chrome finish, fully polished with spring-loaded retaining ball.

Item			
No.	Inch	mm	wt.
602 58	8.82	224	.47



602 59 3/8" Converter To 1/4" Hard chrome finish, fully polished with spring-loaded retaining ball.

Item			
No.	Inch	mm	wt.
602 59	.98	25	.07



602 60 3/8" Converter To 1/2" Hard chrome finish, fully polished with spring-loaded retaining ball.

Item			
No.	Inch	mm	wt.
602 60	1.38	35	.11



602 61 3/8" Square Coupler Hard chrome finish, fully polished with spring-loaded retaining ball.

Item			
No.	Inch	mm	wt.
602 61	.98	25	.03

Wiha 3/8" Spark Plug Sockets

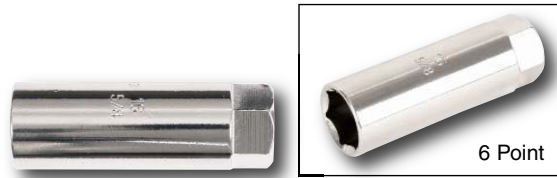


602 62 Spark Plug Socket DIN 3124 / ISO 2725
Hard chrome finish, head polished extra deep. Ball retaining groove with rubber insert. 3/8" Drive. 12 point

Item					
No.	Inch	mm	mm	Inch	wt.
602 62	13/16"	20.6	65	2.6	.31

602 63 Spark Plug Socket DIN 3124 / ISO 2725
Hard chrome finish, head polished extra deep. Ball retaining groove with rubber insert. 3/8" Drive. 12 point

Item				
No.	mm	mm	Inch	wt.
602 63	18	65	2.6	.28



602 64 Spark Plug Socket DIN 3124 / ISO 2725
Hard chrome finish, head polished extra deep. Ball retaining groove with rubber insert. 3/8" Drive. 6 point

Item					
No.	Inch	mm	mm	Inch	wt.
602 64	5/8"	16	65	2.6	.22