



Chipsmall Limited consists of a professional team with an average of over 10 year of expertise in the distribution of electronic components. Based in Hongkong, we have already established firm and mutual-benefit business relationships with customers from,Europe,America and south Asia,supplying obsolete and hard-to-find components to meet their specific needs.

With the principle of "Quality Parts,Customers Priority,Honest Operation,and Considerate Service",our business mainly focus on the distribution of electronic components. Line cards we deal with include Microchip,ALPS,ROHM,Xilinx,Pulse,ON,Everlight and Freescale. Main products comprise IC,Modules,Potentiometer,IC Socket,Relay,Connector.Our parts cover such applications as commercial,industrial, and automotives areas.

We are looking forward to setting up business relationship with you and hope to provide you with the best service and solution. Let us make a better world for our industry!



Contact us

Tel: +86-755-8981 8866 Fax: +86-755-8427 6832

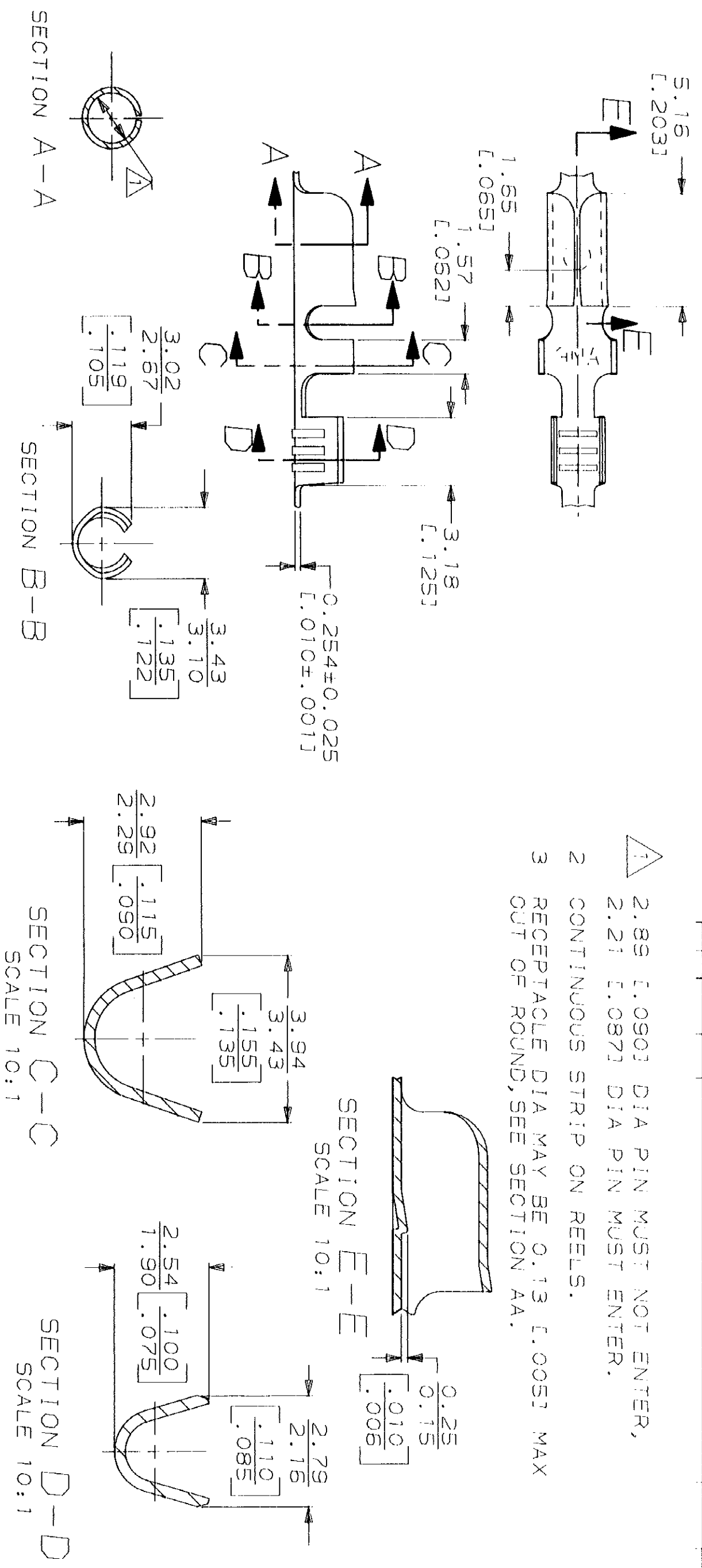
Email & Skype: info@chipsmall.com Web: www.chipsmall.com

Address: A1208, Overseas Decoration Building, #122 Zhenhua RD., Futian, Shenzhen, China



LOC	DIST	P	F	ZONE	TR	DESCRIPTION	DATE	APPD
AF	50				C	REDWN PER AF-6983		

- 1 2.89 [.090] DIA PIN MUST NOT ENTER,
 2.21 [.087] DIA PIN MUST ENTER.
 2 CONTINUOUS STRIP ON REELS.
 3 RECEPTACLE DIA MAY BE 0.13 [.005] MAX
 OUT OF ROUND, SEE SECTION AA.



METRIOR

4.70	F	1.78	1.14 [.045]	0.8mm ² [.18]
[.185]		[.070]	0.99 [.039]	0.5mm ² [.20]
			0.91 [.036]	0.3mm ² [.22]
STRIP LENGTH ±0.38 [±.015]	TYPE	WIDTH	±0.051 [.002] HEIGHT	WIRE
	WIRE BARREL CRIMP			

DO NOT SCALE PRINT. UNLESS SPECIFIED DIMENSIONS IN mm [INCHES] TOLERANCES ON: 2 PLC DEC ± 0.25 [.010] 3 PLC DEC ± . . .	DR 1/30/91 P FORNEY
MATERIAL #4 HARD BRASS	CHK 1/30/91 JR RUTH
FINISH	APPD 3/7/91 G YETTER
	APPD 3/7/91 R MEAVILL
	PRODUCT SPEC
	APPLICATION SPEC
	WEIGHT

0.3 - 0.8mm ² [22-18] AWG	60440-1
WIRE RANGE	PART NO
AMP	AMP Incorporated Harrisburg, PA 17105-3608
RECEPTACLE, PIN, 2.36 [.093] DIA	
SIZE B	CAGE CODE 00779
SCALE 5:1	DRAWING NO 60440
	SHEET 1 OF 1

CUSTOMER DRAWING