



Chipsmall Limited consists of a professional team with an average of over 10 year of expertise in the distribution of electronic components. Based in Hongkong, we have already established firm and mutual-benefit business relationships with customers from,Europe,America and south Asia,supplying obsolete and hard-to-find components to meet their specific needs.

With the principle of “Quality Parts,Customers Priority,Honest Operation,and Considerate Service”,our business mainly focus on the distribution of electronic components. Line cards we deal with include Microchip,ALPS,ROHM,Xilinx,Pulse,ON,Everlight and Freescale. Main products comprise IC,Modules,Potentiometer,IC Socket,Relay,Connector.Our parts cover such applications as commercial,industrial, and automotives areas.

We are looking forward to setting up business relationship with you and hope to provide you with the best service and solution. Let us make a better world for our industry!



Contact us

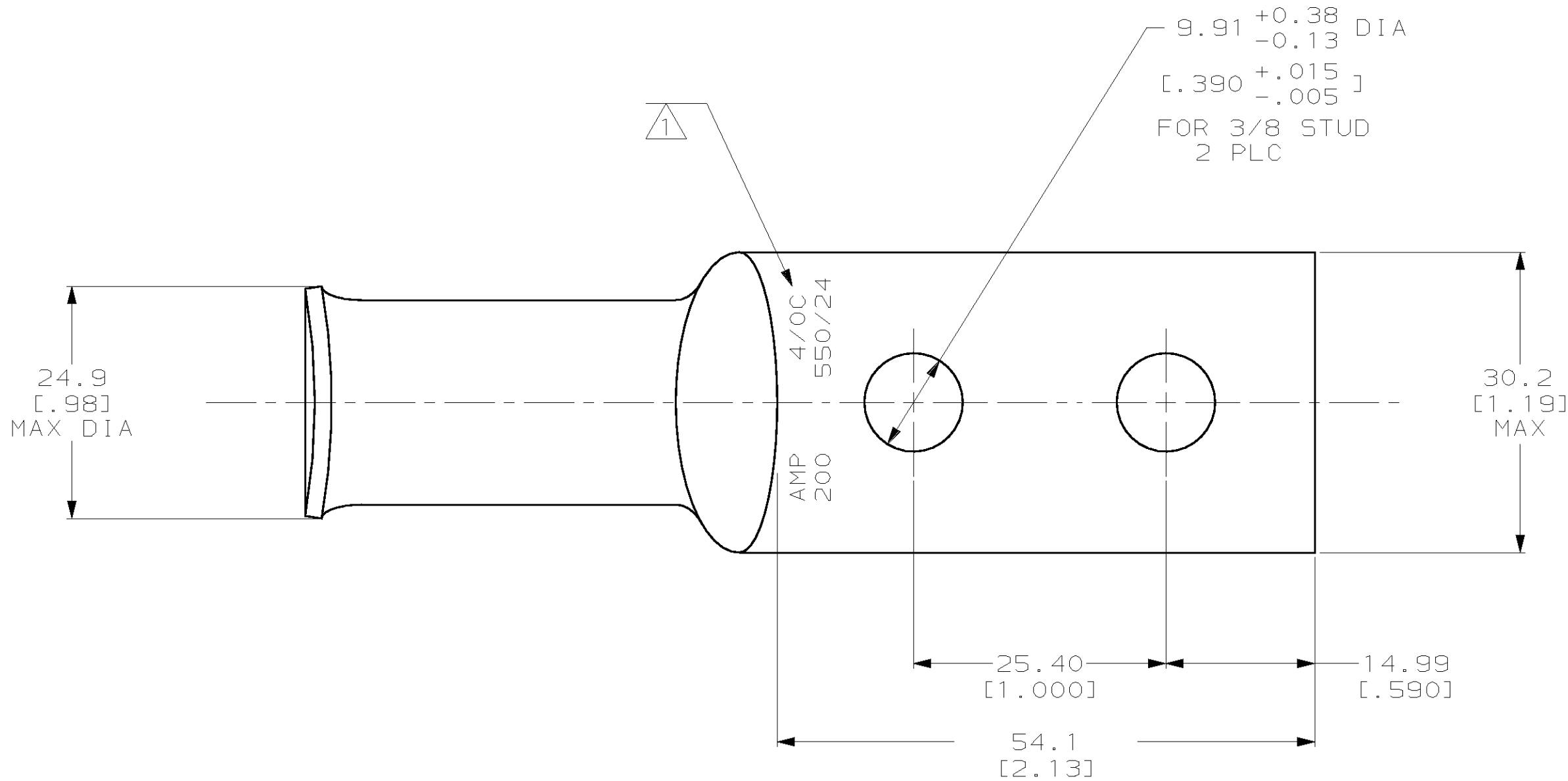
Tel: +86-755-8981 8866 Fax: +86-755-8427 6832

Email & Skype: info@chipsmall.com Web: www.chipsmall.com

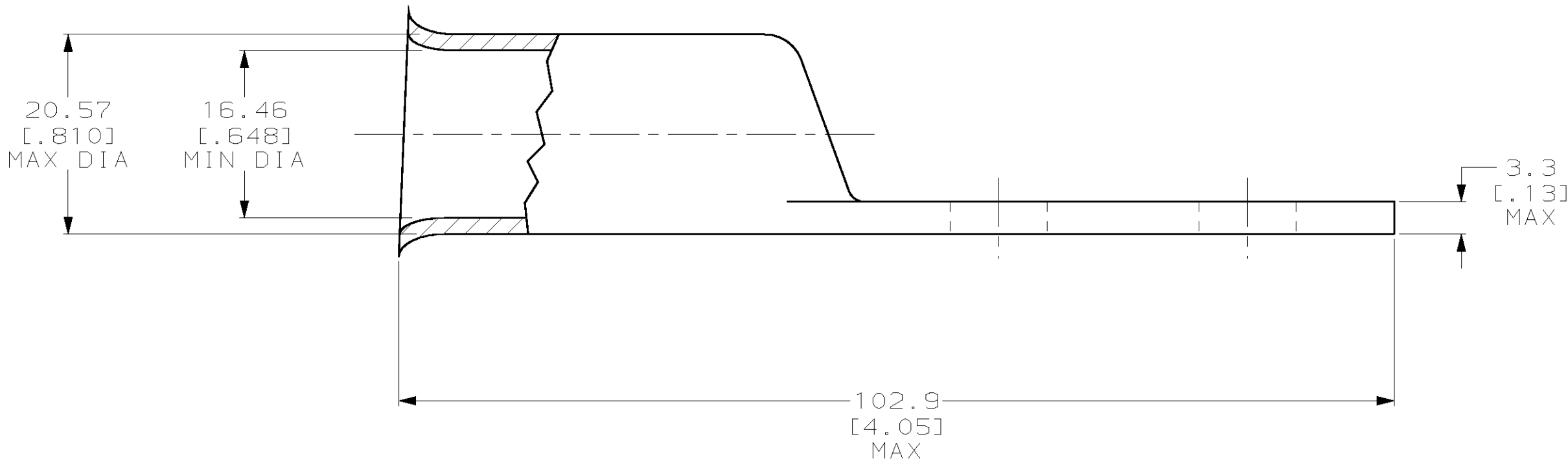
Address: A1208, Overseas Decoration Building, #122 Zhenhua RD., Futian, Shenzhen, China



LOC	DIST	REVISIONS				
G	86	P	LTR	DESCRIPTION	DATE	APVD
		H		REV PER 063A-0637-01	030CT02	MS



1 STAMP AMP 4/0C 200 550/24 APPROX AS SHOWN



605685-1

PART
NUMBER

THIS DRAWING IS A CONTROLLED DOCUMENT FOR AMP INCORPORATED. IT IS SUBJECT TO CHANGE AND THE CONTROLLING ENGINEERING ORGANIZATION SHOULD BE CONTACTED FOR THE LATEST REVISION.		DWN DK SCHRUM 05FEB96	AMP AMP Incorporated Harrisburg, PA 17105-3608		
		CHK WJ VOCKROTH 08FEB96			
DIMENSIONS: mm [INCHES]		APVD JL MECKLEY 08FEB96	NAME TERMINAL, LONG BARREL, AMPOWER, WIRE SIZE: 4/0 AWG		
	TOLERANCES, UNLESS OTHERWISE SPECIFIED:		PRODUCT SPEC —		
			APPLICATION SPEC —		
			SIZE A2		
			CAGE CODE 00779		
			DRAWING NO C-605685		
MATERIAL COPPER PER ASTM B-75 ANNEALED	FINISH TIN PLATE 0.00381 [.000150] MIN THK PER MIL-T-10727		WEIGHT —		
CUSTOMER DRAWING			SCALE 2:1		
			SHEET 1 OF 1		
			REV H		