



Chipsmall Limited consists of a professional team with an average of over 10 year of expertise in the distribution of electronic components. Based in Hongkong, we have already established firm and mutual-benefit business relationships with customers from,Europe,America and south Asia,supplying obsolete and hard-to-find components to meet their specific needs.

With the principle of “Quality Parts,Customers Priority,Honest Operation,and Considerate Service”,our business mainly focus on the distribution of electronic components. Line cards we deal with include Microchip,ALPS,ROHM,Xilinx,Pulse,ON,Everlight and Freescale. Main products comprise IC,Modules,Potentiometer,IC Socket,Relay,Connector.Our parts cover such applications as commercial,industrial, and automotives areas.

We are looking forward to setting up business relationship with you and hope to provide you with the best service and solution. Let us make a better world for our industry!



Contact us

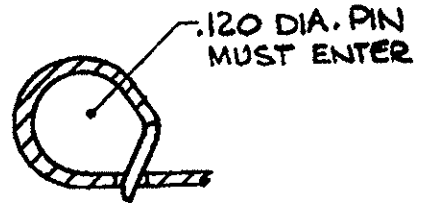
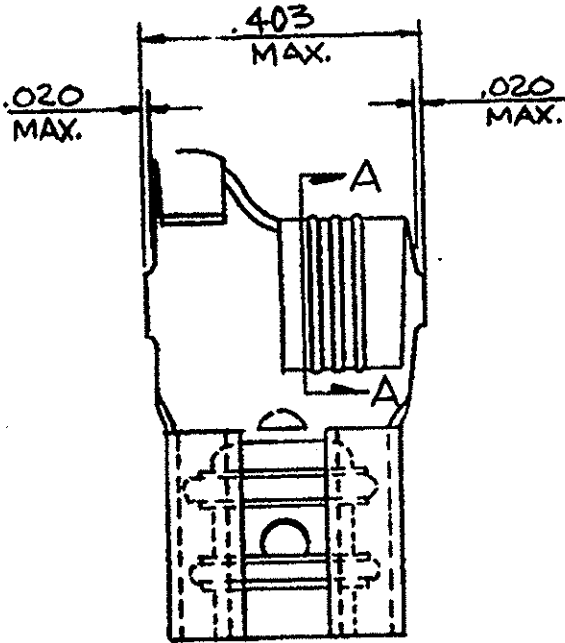
Tel: +86-755-8981 8866 Fax: +86-755-8427 6832

Email & Skype: info@chipsmall.com Web: www.chipsmall.com

Address: A1208, Overseas Decoration Building, #122 Zhenhua RD., Futian, Shenzhen, China



60583



SECT. A-A

- NOTES -

1- REFER TO PART # 42563 FOR ADDITIONAL INFORMATION.

② - #12-#10 A.W.G, LIMITED TO 9,600 CIRCULAR MIL AREA.

WIRE RANGE	INSULATION RANGE	TAB THK ±.001	MATERIAL AND FINISH	COMBINATION NUMBER	REMARKS
12-10	.110 - .210	.032	018-PHOS. BRONZE-SILVER	60583-1(42563-6L.P.)	PRE-FORM ④
			BRASS-TIN	60583-2(42563-2L.P.)	PRE-FORM ③
②	.110 - .210	.032	018-BRASS-SILVER	60583-3(42563-3L.P.)	PRE-FORM ④
	.110 - .210	.032	018-BRASS-TIN	60583-4(42563-2L.P.)	NO PRE-FORM ④

③ FOREIGN PRODUCTION ONLY.

④ OBSOLETE

This terminal to be supplied in individual form, not as continuous strip.

S-26 - PRODUCT ENGINEERING

DIMENSIONS IN INCHES. DO NOT SCALE PRINT.

©1965 BY AMP INCORPORATED. ALL RIGHTS RESERVED. AMP PRODUCTS COVERED BY PATENTS AND/OR PATENTS PENDING.

CUSTOMER COPY REFERENCE ONLY

MATERIAL AND FINISH

STE TE Connectivity

CLASS #

WIRE RANGE INSULATION TYPE

#

E	ECR-12-013445	KH	PD	24NOV12
STR	REVISION RECORD	DR	CHK	DATE

TOLERANCE EXCEPT AS NOTED ± .018 ± 1° 4-1

REV E 60583

NAME 250 SERIES FLAG FASTON RECEPTACLE

APPROVED: [Signature] DATE: 5/2/12
 DESIGNED: [Signature] DATE: 5/2/12
 CHECKED: [Signature] DATE: 5/2/12