



Chipsmall Limited consists of a professional team with an average of over 10 year of expertise in the distribution of electronic components. Based in Hongkong, we have already established firm and mutual-benefit business relationships with customers from,Europe,America and south Asia,supplying obsolete and hard-to-find components to meet their specific needs.

With the principle of "Quality Parts,Customers Priority,Honest Operation,and Considerate Service",our business mainly focus on the distribution of electronic components. Line cards we deal with include Microchip,ALPS,ROHM,Xilinx,Pulse,ON,Everlight and Freescale. Main products comprise IC,Modules,Potentiometer,IC Socket,Relay,Connector.Our parts cover such applications as commercial,industrial, and automotives areas.

We are looking forward to setting up business relationship with you and hope to provide you with the best service and solution. Let us make a better world for our industry!



Contact us

Tel: +86-755-8981 8866 Fax: +86-755-8427 6832

Email & Skype: info@chipsmall.com Web: www.chipsmall.com

Address: A1208, Overseas Decoration Building, #122 Zhenhua RD., Futian, Shenzhen, China

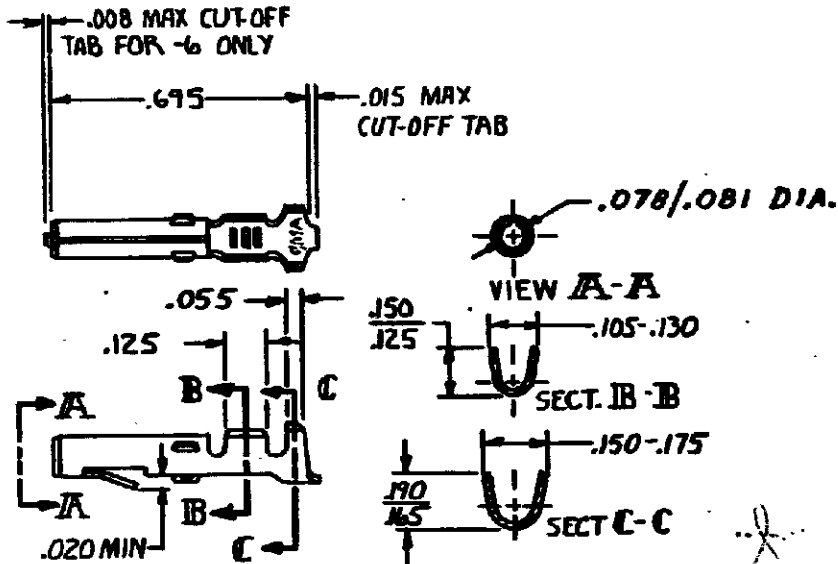


DRAWING MADE IN THIRD ANGLE PROJECTION

12 LCC CM 53

© COPYRIGHT

REVISIONS			
LTR	DESCRIPTION	DATE	APPROVED
T1	REVISED PER ECO-11-005294	05APR11	HMR



▲ NICKEL ON ENTIRE TERMINAL WITH .000030 GOLD OVER INSIDE OF MATING AREA AND WIRE BARREL.

GOLD	▲ .012 PH. BRZ.	60619-7
GOLD	▲ .012 BRASS	-5
TIN	.012 PH. BRZ	-4
TIN	.012 BRASS	60619-1
FINISH	MATERIAL	PART NO

UNLESS OTHERWISE SPECIFIED DIMENSIONS ARE IN INCHES. TOLERANCES ON: DECIMALS ± .015 ANGLES ±	CONTRACT NO	TE Connectivity	
	DR M. FEHER 11-14-79		
MATERIAL SEE TABLE	CHK D.S. Heide 1/4/80	NAME SOCKET, LOOSE PIECE, COMMERCIAL MATE-N-LOK	
	APPO [Signature] 1-7-80	SIZE A	CODE IDENT. NO 00779
FINISH SEE TABLE	WIRE RANGE 20-14 AWG	DRAWING NO 60619	SHEET
	INSULATION DIA .130 MAX	SCALE	

CUSTOMER DRAWING