



Chipsmall Limited consists of a professional team with an average of over 10 year of expertise in the distribution of electronic components. Based in Hongkong, we have already established firm and mutual-benefit business relationships with customers from,Europe,America and south Asia,supplying obsolete and hard-to-find components to meet their specific needs.

With the principle of "Quality Parts,Customers Priority,Honest Operation,and Considerate Service",our business mainly focus on the distribution of electronic components. Line cards we deal with include Microchip,ALPS,ROHM,Xilinx,Pulse,ON,Everlight and Freescale. Main products comprise IC,Modules,Potentiometer,IC Socket,Relay,Connector.Our parts cover such applications as commercial,industrial, and automotives areas.

We are looking forward to setting up business relationship with you and hope to provide you with the best service and solution. Let us make a better world for our industry!



Contact us

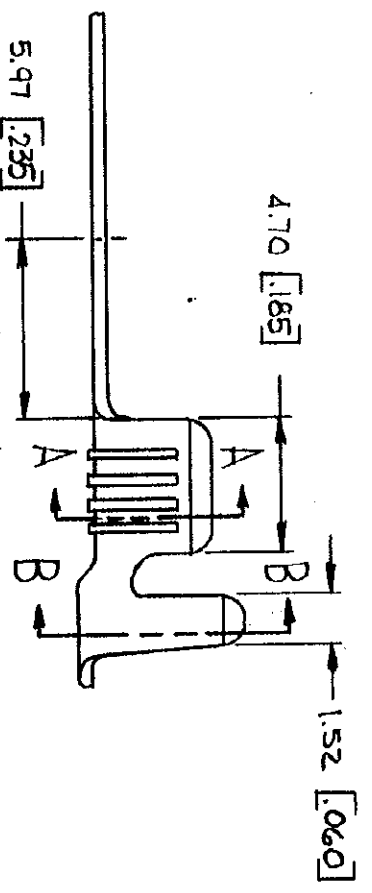
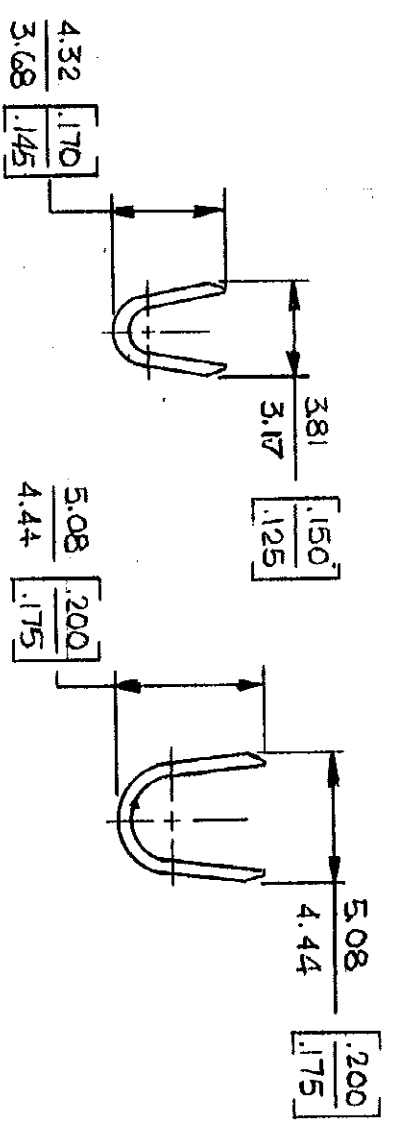
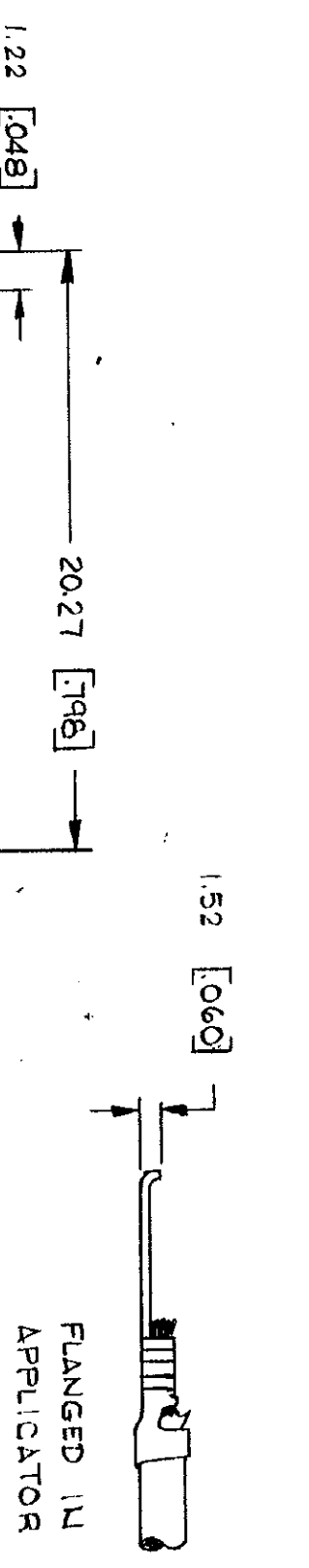
Tel: +86-755-8981 8866 Fax: +86-755-8427 6832

Email & Skype: info@chipsmall.com Web: www.chipsmall.com

Address: A1208, Overseas Decoration Building, #122 Zhenhua RD., Futian, Shenzhen, China



© COPYRIGHT 1964 BY AMP INCORPORATED, HARRISBURG, PA.
 ALL INTERNATIONAL RIGHTS RESERVED. AMP INCORPORATED PRODUCTS
 COVERED BY U. S. AND FOREIGN PATENTS AND/OR PATENTS PENDING.



		REVISIONS			1	Loc	DIST
P	F	ZONE	LTR	DESCRIPTION	DATE	APPROVED	SC
			D	REDRAWN & REVISED A-3943	6-26-78	DTD	SS
			E	ADDED - 3 TTI	9-5-79	PLT	ROF
			F	OBSOLETED - 3 PER A-5398	4-15-82	RSJ	64
			G	INSUL SUPP. LENGTH AF-0781	2-20-85	RSJ	64
			H	REVISED AE1994	7/1/86	SS	ROF

SECT A-A

SECT B-B

UNLESS OTHERWISE SPECIFIED DIMENSIONS ARE IN INCHES. TOLERANCES ON DECIMALS ± 0.39 [015] ANGLES ± 1° 0'		CONTRACT NO.		NAME	
STUD SIZE	WIRE RANGE	INSULATION RANGE	FINISH	MATERIAL	PART NO
M 4 # 8	0.8 - 2.0 mm ² [18-14]	2.54 - 3.56 [100 - 140]	TIN	0.46 BRASS [018]	60774-1
MATERIAL		FINISH		MATERIAL	
SEE TABLE		NONE		BRASS	
FINISH		OTHER APFD		SCALE	
SEE TABLE				B 00779	

- 1. CONTINUOUS STRIP ON REELS.
- 2. DIMENSIONS IN BRACKETS ARE IN INCHES.

△ SUFFIX LETTER MUST BE USED ONLY WHEN ORDERING APPLICATOR TOOLING.

METRIC

A

B

C

D