



Chipsmall Limited consists of a professional team with an average of over 10 year of expertise in the distribution of electronic components. Based in Hongkong, we have already established firm and mutual-benefit business relationships with customers from,Europe,America and south Asia,supplying obsolete and hard-to-find components to meet their specific needs.

With the principle of "Quality Parts,Customers Priority,Honest Operation,and Considerate Service",our business mainly focus on the distribution of electronic components. Line cards we deal with include Microchip,ALPS,ROHM,Xilinx,Pulse,ON,Everlight and Freescale. Main products comprise IC,Modules,Potentiometer,IC Socket,Relay,Connector.Our parts cover such applications as commercial,industrial, and automotives areas.

We are looking forward to setting up business relationship with you and hope to provide you with the best service and solution. Let us make a better world for our industry!



Contact us

Tel: +86-755-8981 8866 Fax: +86-755-8427 6832

Email & Skype: info@chipsmall.com Web: www.chipsmall.com

Address: A1208, Overseas Decoration Building, #122 Zhenhua RD., Futian, Shenzhen, China



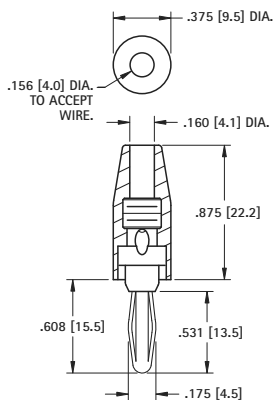
STANDARD SOLDERLESS

Current Ratings: Standard: (.175) 15 Amps; Large: (.300) 40 Amps

SOLDERLESS CONNECTION



.175 (4.5)
Plug



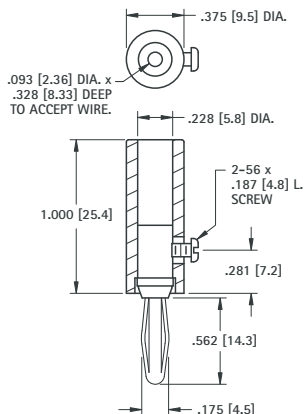
MATERIAL:
Spring: Nickel Silver
Body: Brass, Nickel Plate
Handle: Nylon

CAT. NO.	COLOR
6078	RED
6079	BLACK

SOLDERLESS WITH SET SCREW



.175 (4.5)
Plug



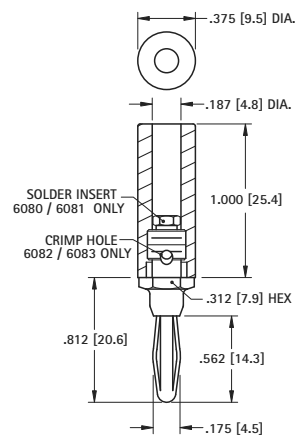
MATERIAL:
Spring: Nickel Silver
Body: Brass, Nickel Plate
Handle: Nylon

CAT. NO.	COLOR
6084	RED
6085	BLACK

SOLDERLESS CONNECTION



.175 (4.5)
Plug



MATERIAL:
Spring: Phosphor Bronze
Body: Brass, Nickel Plate
Handle: Nylon

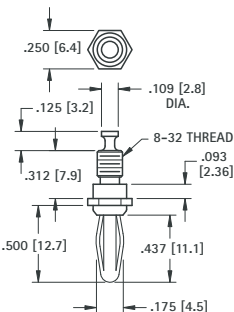
RED CAT. NO.	BLACK CAT. NO.	WIRE CONNECTION
6080	6081	SOLDER
6082	6083	SOLDERLESS

EXTERNAL THREAD

SOLDER LUG



.175 (4.5)
Plug



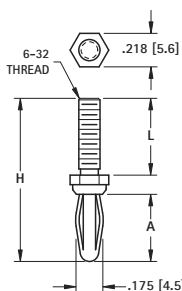
MATERIAL:
Spring: Beryllium Copper
Body: Brass, Nickel Plate

CAT. NO. 652

FOUR LEAF SPRING



.175 (4.5)
Plug



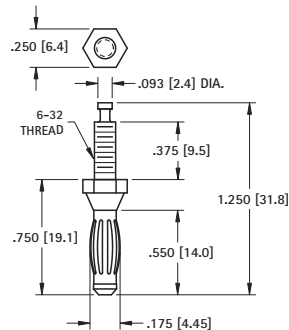
MATERIAL:
Spring: Beryllium Copper (Cat. No. 653)
Spring: Phosphor Bronze (Cat. No. 654, 655)
Body: Brass, Nickel Plate

CAT. NO.	H	L	A
653	1.062 (27.0)	.500 (12.7)	.437 (11.1)
654	.937 (24.7)	.188 (4.8)	.550 (14.0)
655	1.250 (31.8)	.500 (12.7)	.550 (14.0)

BARREL SPRING



.175 (4.5)
Plug



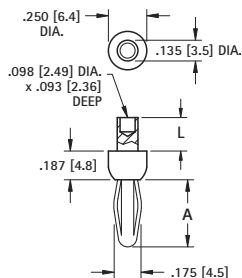
MATERIAL:
Spring: Beryllium Copper
Body: Brass, Nickel Plate

CAT. NO. 657

STANDARD RIVET



.175 (4.5)
Plug



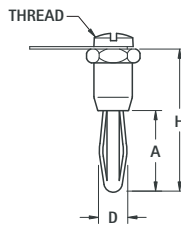
MATERIAL:
Four Leaf Spring: Phosphor Bronze,
*Barrel Spring, Beryllium Copper
Body: Brass, Nickel Plate

CAT. NO.	L	A	SPRING
552-3	.187 (4.7)	.437 (11.1)	4 leaf
658	.187 (4.7)	.550 (14.0)	barrel
552-4	.218 (5.5)	.437 (11.1)	4 leaf

INTERNAL THREAD



Supplied with screw and lug
Unassembled



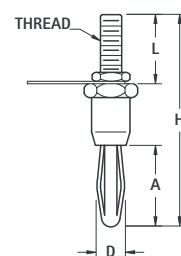
MATERIAL:
Four Leaf Spring: Phosphor Bronze,
*Barrel Spring, Beryllium Copper
Body: Brass, Nickel Plate

CAT. NO.	D	A	H	THREAD	SPRING
6072	.175 (4.4)	.531 (13.5)	.960 (24.4)	6-32	4 leaf
659*	.175 (4.4)	.550 (14.0)	.960 (24.4)	6-32	barrel
6073	.300 (7.6)	.750 (19.1)	1.156 (29.4)	10-32	4 leaf

EXTERNAL THREAD



Supplied with nut and lug
Unassembled



MATERIAL:
Spring: Phosphor Bronze
Body: Brass, Nickel Plate

CAT. NO.	D	A	H	L	THREAD
6074-1	.175 (4.5)	.531 (13.5)	1.125 (28.6)	.375 (9.5)	6-32
6074-2	.175 (4.5)	.531 (13.5)	1.500 (38.1)	.750 (19.1)	6-32
6075	.300 (7.5)	.750 (19.1)	1.750 (44.5)	.625 (15.9)	1/4-28

BANANA PLUGS