



Chipsmall Limited consists of a professional team with an average of over 10 year of expertise in the distribution of electronic components. Based in Hongkong, we have already established firm and mutual-benefit business relationships with customers from,Europe,America and south Asia,supplying obsolete and hard-to-find components to meet their specific needs.

With the principle of “Quality Parts,Customers Priority,Honest Operation,and Considerate Service”,our business mainly focus on the distribution of electronic components. Line cards we deal with include Microchip,ALPS,ROHM,Xilinx,Pulse,ON,Everlight and Freescale. Main products comprise IC,Modules,Potentiometer,IC Socket,Relay,Connector.Our parts cover such applications as commercial,industrial, and automotives areas.

We are looking forward to setting up business relationship with you and hope to provide you with the best service and solution. Let us make a better world for our industry!



Contact us

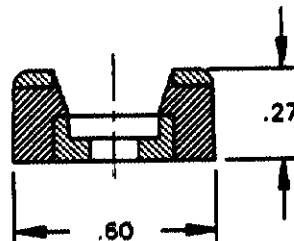
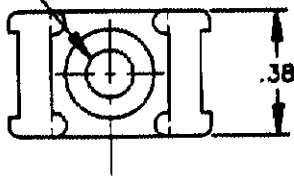
Tel: +86-755-8981 8866 Fax: +86-755-8427 6832

Email & Skype: info@chipsmall.com Web: www.chipsmall.com

Address: A1208, Overseas Decoration Building, #122 Zhenhua RD., Futian, Shenzhen, China



608801

.14 DIA HOLE FOR
#6 SCREW

NOTE: ACCOMMODATES CABLE TIES WITH
TENSILE VALUE OF 50 LBS. MAXIMUM.

CUSTOMER
DRAWING
UNPUBLISHED

608801-1

AS SHOWN - PACKAGED 100 PER SEALED
POLY BAG WITH LABEL TO CONTAIN AMP P/N,
DESCRIPTION, QUANTITY, DATE CODE, AND U.I.
RECOGNITION MARK.

LOC D	DWG SIZE		PART No.	DESCRIPTION
DIST 1	REVISION OF EACH ASSY NO. (WHEN BLANK, USE DWG REVISION)			
QTY. REQ'D. PER ASSY.		PARTS LIST		
		MATERIAL NYLON - WHITE	HEAT TREAT	FINISH
		DIMENSIONS ARE IN INCHES	DRAWN BY: M.J. JULESZYNSKI	DATE: 9/2/90
		TOLERANCES UNLESS OTHERWISE SPECIFIED:	CHECK BY:	APPROVED BY:
		2 PL DEC ± .02		RELEASE: J. Hamed 9-14-90
		3 PL DEC ±	AMP INCORPORATED Harrisburg, Pa.	
		4 PL DEC ±	NAME: 2 WAY CABLE TIE MOUNT	
		ANGLES ±	#6 SCREW HOLE, W/O ADHESIVE	
		SURF TEXTURE: ✓		
		REMOVE BURRS, BREAK SHARP EDGES, .015 R. MAX.		
O	ECN 082990	F.H. 9/90	SCALE:	DRAWING No.: 608801
P	F	LTR	REVISION RECORD	SHEET: 1 of 1
		A-P	DATE	REV.: 0

THIS INFORMATION IS CONFIDENTIAL AND IS DISCLOSED
TO YOU ON CONDITION THAT NO FURTHER DISCLOSURE IS
MADE BY YOU TO OTHER THAN AMP PERSONNEL WITHOUT
WRITTEN AUTHORIZATION FROM AMP INCORPORATED,
HARRISBURG, PA.