



Chipsmall Limited consists of a professional team with an average of over 10 year of expertise in the distribution of electronic components. Based in Hongkong, we have already established firm and mutual-benefit business relationships with customers from,Europe,America and south Asia,supplying obsolete and hard-to-find components to meet their specific needs.

With the principle of “Quality Parts,Customers Priority,Honest Operation,and Considerate Service”,our business mainly focus on the distribution of electronic components. Line cards we deal with include Microchip,ALPS,ROHM,Xilinx,Pulse,ON,Everlight and Freescale. Main products comprise IC,Modules,Potentiometer,IC Socket,Relay,Connector.Our parts cover such applications as commercial,industrial, and automotives areas.

We are looking forward to setting up business relationship with you and hope to provide you with the best service and solution. Let us make a better world for our industry!



## Contact us

Tel: +86-755-8981 8866 Fax: +86-755-8427 6832

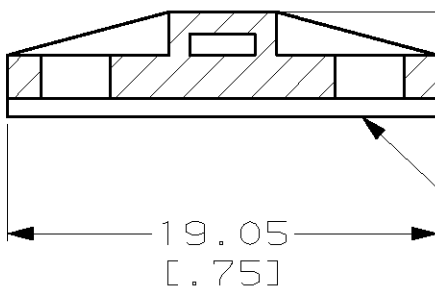
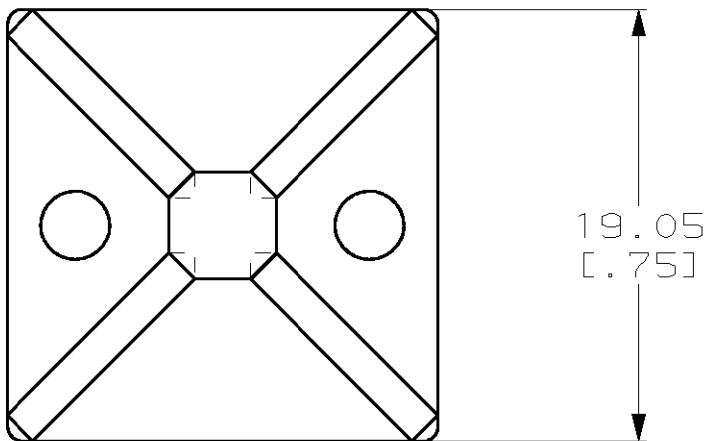
Email & Skype: [info@chipsmall.com](mailto:info@chipsmall.com) Web: [www.chipsmall.com](http://www.chipsmall.com)

Address: A1208, Overseas Decoration Building, #122 Zhenhua RD., Futian, Shenzhen, China



LOC	DIST	REVISIONS					
CM	53	P	LTR	DESCRIPTION	DATE	DWN	APVD
			0	RELEASED	17-JAN-00	KW	JS

1. ACCOMODATES CABLE TIES WITH TENSILE VALUE OF 133.44 NEWTONS [30 LBS] MAXIMUM.
2. AS SHOWN - PACKAGED 100 PER SEALED POLY BAG WITH LABEL TO CONTAIN AMP P/N DESCRIPTION, QUANTITY, DATE CODE, AND U.L. RECOGNITION MARK.



3.81  
[.15]

0.7938 [.03125] THK (REF)  
ADHESIVE BACKING

# METRIC

608802-1

PART NUMBER

DIMENSIONS: mm [INCHES]		DWN K. WHITAKER 17-JAN-2000	MATERIAL NYLON, WHITE	FINISH -
TOLERANCES UNLESS OTHERWISE SPECIFIED:		CHK J. SCHLUNZ 17-JAN-2000	AMP Incorporated Harrisburg, PA 17105-3608	
0 PLC ±-		APVD J. SCHLUNZ 17-JAN-2000	NAME 4 WAY CABLE TIE MOUNT	
1 PLC ±-		PRODUCT SPEC -	2 #4 SCREW HOLES, W/ADHESIVE	
2 PLC ±0.51 [.02]		APPLICATION SPEC -	SIZE A4	CAGE CODE 00779
3 PLC ±-		WEIGHT -	DRAWING NO C- 608802	RESTRICTED TO -
4 PLC ±-		CUSTOMER DRAWING		
ANGLES ±0°30'		SCALE 3:1		
		SHEET 1 OF 1		
		REV 0		