



Chipsmall Limited consists of a professional team with an average of over 10 year of expertise in the distribution of electronic components. Based in Hongkong, we have already established firm and mutual-benefit business relationships with customers from,Europe,America and south Asia,supplying obsolete and hard-to-find components to meet their specific needs.

With the principle of “Quality Parts,Customers Priority,Honest Operation,and Considerate Service”,our business mainly focus on the distribution of electronic components. Line cards we deal with include Microchip,ALPS,ROHM,Xilinx,Pulse,ON,Everlight and Freescale. Main products comprise IC,Modules,Potentiometer,IC Socket,Relay,Connector.Our parts cover such applications as commercial,industrial, and automotives areas.

We are looking forward to setting up business relationship with you and hope to provide you with the best service and solution. Let us make a better world for our industry!



Contact us

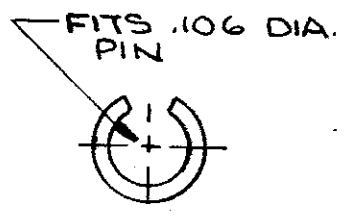
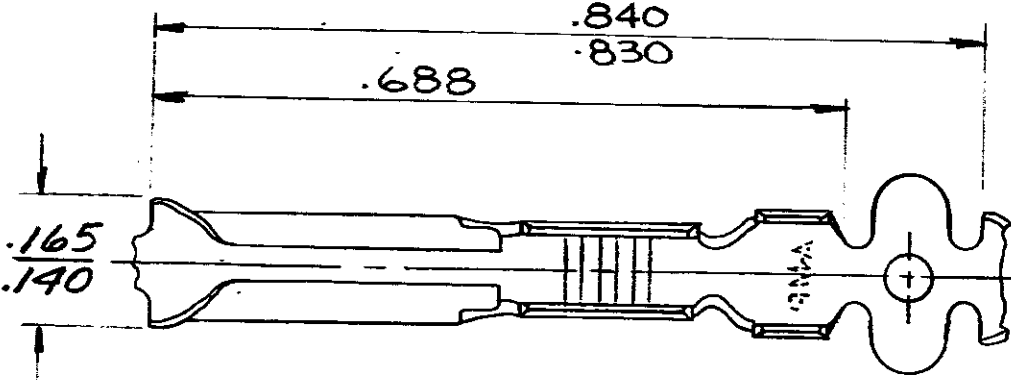
Tel: +86-755-8981 8866 Fax: +86-755-8427 6832

Email & Skype: info@chipsmall.com Web: www.chipsmall.com

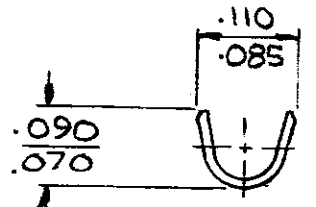
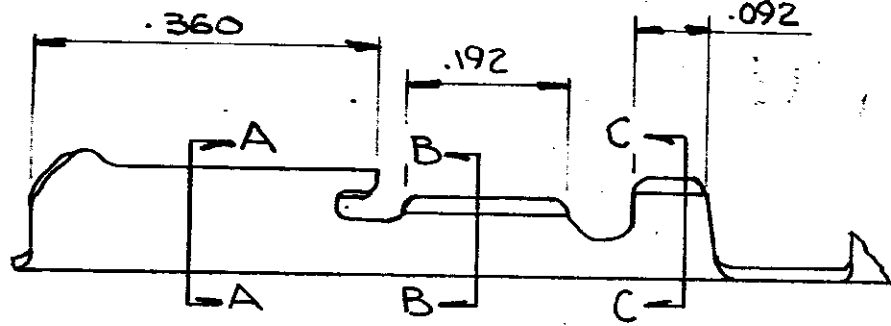
Address: A1208, Overseas Decoration Building, #122 Zhenhua RD., Futian, Shenzhen, China



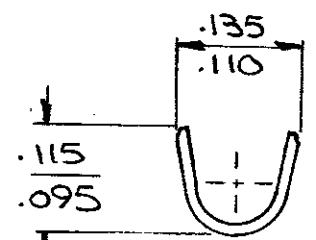
NUMBER
60908



SECT A-A



SECT B-B



SECT C-C

CONTINUOUS STRIP, ON REELS

WIRE SIZE AWG	INSULATION RANGE	PIN DIA. ±.002	MATERIAL AND FINISH	TERMINAL NUMBER
24-20	.075-.100	.106	.012 BRASS-PRE-TIN	60908-1

DIMENSIONS IN INCHES. DO NOT SCALE PRINT.

G	ADDED SEER. A 208L	NA	Key	1/8/69
F	CHANGED DIST. A-47	LE	Key	9-20-71
E	.165/.140 WAS 5.810	JRK	AET	11/8/69
D	.155 ^{±.010} WAS .165/.145	JRK	HET	10/1/68
C	ADDED .165/.145	EXP	WJ	9/1/68
B	RELEASED	CM	SH	12-1-68
A	REVISED A 645	CNI	Rb	12/1/65
	WAS P-28634			

©1965 BY AMP INCORPORATED. ALL RIGHTS RESERVED. AMP PRODUCTS COVERED BY PATENTS AND/OR PATENTS PENDING.

CUSTOMER COPY REFERENCE ONLY

MATERIAL AND FINISH



WIRE — RANGE — INSULATION

CLASS — TYPE —

LTR	REVISION RECORD	DR	CHK	DATE
	11-1-65	DE		11-2-65
	C. MEYERS			
	PC SWENDEL			

TOLERANCE EXCEPT AS NOTED ± .013	SCALE ± 1° 5-1	LOC AF	NO A	NO 60908	REV G
----------------------------------	----------------	--------	------	----------	-------

NAME .106 DIA. PIN RECEPTACLE