



Chipsmall Limited consists of a professional team with an average of over 10 year of expertise in the distribution of electronic components. Based in Hongkong, we have already established firm and mutual-benefit business relationships with customers from,Europe,America and south Asia,supplying obsolete and hard-to-find components to meet their specific needs.

With the principle of “Quality Parts,Customers Priority,Honest Operation,and Considerate Service”,our business mainly focus on the distribution of electronic components. Line cards we deal with include Microchip,ALPS,ROHM,Xilinx,Pulse,ON,Everlight and Freescale. Main products comprise IC,Modules,Potentiometer,IC Socket,Relay,Connector.Our parts cover such applications as commercial,industrial, and automotives areas.

We are looking forward to setting up business relationship with you and hope to provide you with the best service and solution. Let us make a better world for our industry!



Contact us

Tel: +86-755-8981 8866 Fax: +86-755-8427 6832

Email & Skype: info@chipsmall.com Web: www.chipsmall.com

Address: A1208, Overseas Decoration Building, #122 Zhenhua RD., Futian, Shenzhen, China



DESCRIPTION	11-21-90	REV
C. Weathers		3

SAFETY ORGANIZATION(S).

THIS FILTER HAS BEEN FORMALLY RECOGNIZED, CERTIFIED OR APPROVED BY THE LISTED AGENCY. THEREFORE, ALL TEST/REQUIREMENTS SPECIFIED IN THE LATEST REVISION OF THE FOLLOWING AGENCY STANDARDS HAVE BEEN MET.

UL 1283
CSA 22.2 NO. 0, 0.4, 8

OPERATING SPECIFICATIONS.

LINE VOLTAGE/CURRENT: 45 OR 60 AMP., 250VAC PHASE/NEUTRAL-GND
45 OR 60 AMP., 440VAC PHASE/PHASE
50-60HZ
40°C

LINE FREQUENCY: 1.4mA @ 120V 60HZ
MAX. CASE RISE @ RATED CURRENT: 3.4mA @ 250V 50HZ
MAX. LEAKAGE CURRENT, EACH LINE TO GROUND: -10°C TO +40°C @ RATED CURRENT, I_r

IN AN AMBIENT, T₀, HIGHER THAN 40°C, THE MAXIMUM OPERATING CURRENT, I₀, IS AS FOLLOWS:

$$I_0 = I_r \sqrt{\frac{85 - T_0}{45}}$$

RELIABILITY SPECIFICATIONS.

STORAGE TEMPERATURE: -25°C TO +85°C
HUMIDITY: 21 DAYS @ 40°C 95% RH

TEST SPECIFICATIONS.

INDUCTANCE: 45A = 2.22mH NOMINAL
GROUND CHOKES: 50A = .261mH NOMINAL
CAPACITANCE: (MEASURED @ 1 KHZ, 0.25 VAC MAX., 25°C ±1°C)
PHASE/NEUTRAL TO GROUND: .026µF ±20%
PHASE TO NEUTRAL: 4.47µF ±20%
DISCHARGE RESISTOR: 73.3K OHMS
LINE/GROUND AND LINE/LINE INSULATION RESISTANCE (W/O DISCHARGE RESISTOR) 5000 MΩ (MIN) AT 100 VDC
RECOMMENDED RECEIVING INSPECTION HIPOTEL. 1500 VAC FOR 1 MINUTE
PHASE/NEUTRAL TO GROUND: 1450 VDC FOR 1 MINUTE
PHASE TO NEUTRAL:

FILTER APPROVAL:

THE BEST WAY TO SELECT AND QUALIFY A FILTER IS FOR YOUR ENGINEERING TO TEST THE UNIT IN YOUR EQUIPMENT.

TOLERANCE EXCEPT AS NOTED

DECIMAL: .XXX .XX .X ANGLES ±1°
ENGLISH: ±.030
METRIC: ±

MATERIAL: AS SUPPLIED

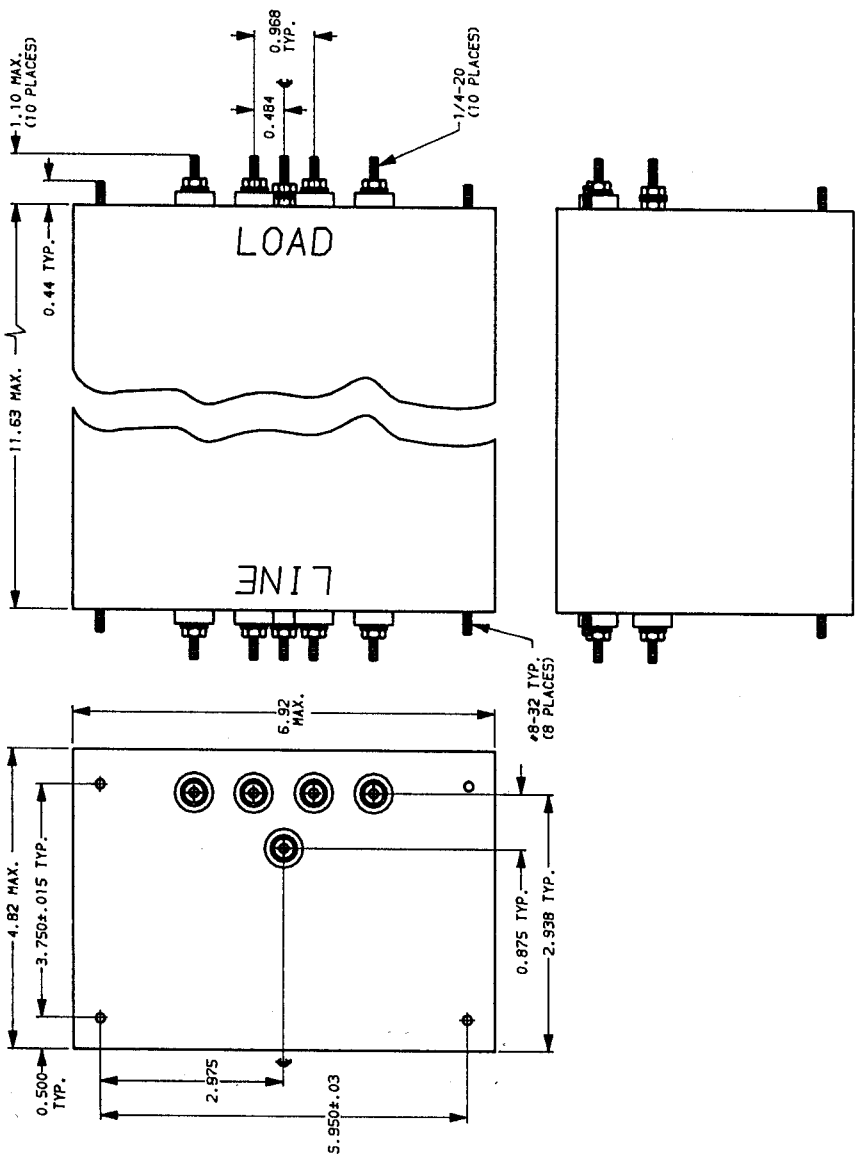
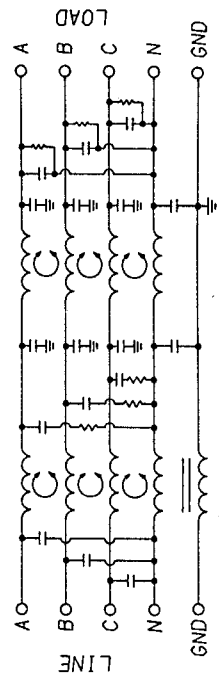
FINISH:

This document is proprietary to CORCOM INC. and is not to be reproduced nor used for manufacturing purposes except on CORCOM's order or prior written consent.

50Ω - 50Ω (MINIMUM) INSERTION LOSS		DIFF. MODE MEASURED N TO A-B-C SHORTED TOGETHER.					
FREQUENCY MHz	.05	.15	.5	1.0	5.0	10.0	30.0
COMMON 45A	15	43	75	75	75	75	50
50A	12	46	75	75	75	70	45
DIFF. 45A	14	50	75	75	75	75	65
50A	26	58	75	75	75	75	60

NOTES:

1.) LINE SIDE HAS INSULATED GROUND TERMINAL.



CORCOM
LIBERTYVILLE, IL 60048

POWER LINE FILTER

SCALE: NTS 4-25-89
DRG. NO. 45AY16C & 60AY16C
REV. 3

DWG. NO. 45AY16C & 60AY16C
REV. 3

DESIGNER: LJD
CFW