



Chipsmall Limited consists of a professional team with an average of over 10 year of expertise in the distribution of electronic components. Based in Hongkong, we have already established firm and mutual-benefit business relationships with customers from,Europe,America and south Asia,supplying obsolete and hard-to-find components to meet their specific needs.

With the principle of “Quality Parts,Customers Priority,Honest Operation,and Considerate Service”,our business mainly focus on the distribution of electronic components. Line cards we deal with include Microchip,ALPS,ROHM,Xilinx,Pulse,ON,Everlight and Freescale. Main products comprise IC,Modules,Potentiometer,IC Socket,Relay,Connector.Our parts cover such applications as commercial,industrial, and automotives areas.

We are looking forward to setting up business relationship with you and hope to provide you with the best service and solution. Let us make a better world for our industry!



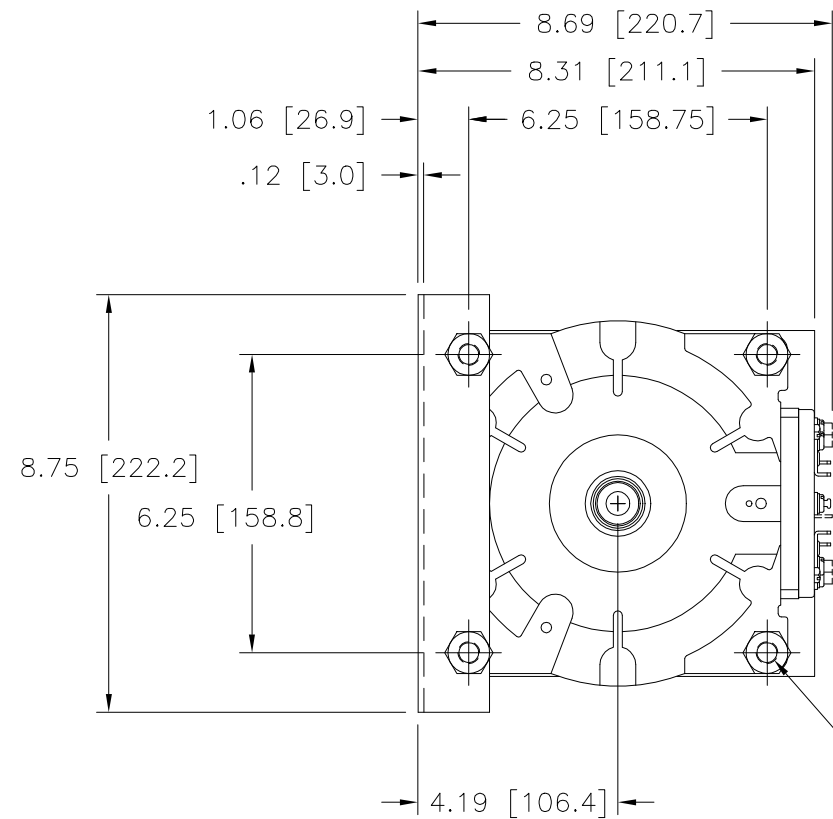
## Contact us

Tel: +86-755-8981 8866 Fax: +86-755-8427 6832

Email & Skype: info@chipsmall.com Web: www.chipsmall.com

Address: A1208, Overseas Decoration Building, #122 Zhenhua RD., Futian, Shenzhen, China

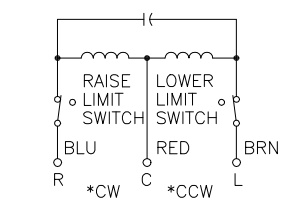
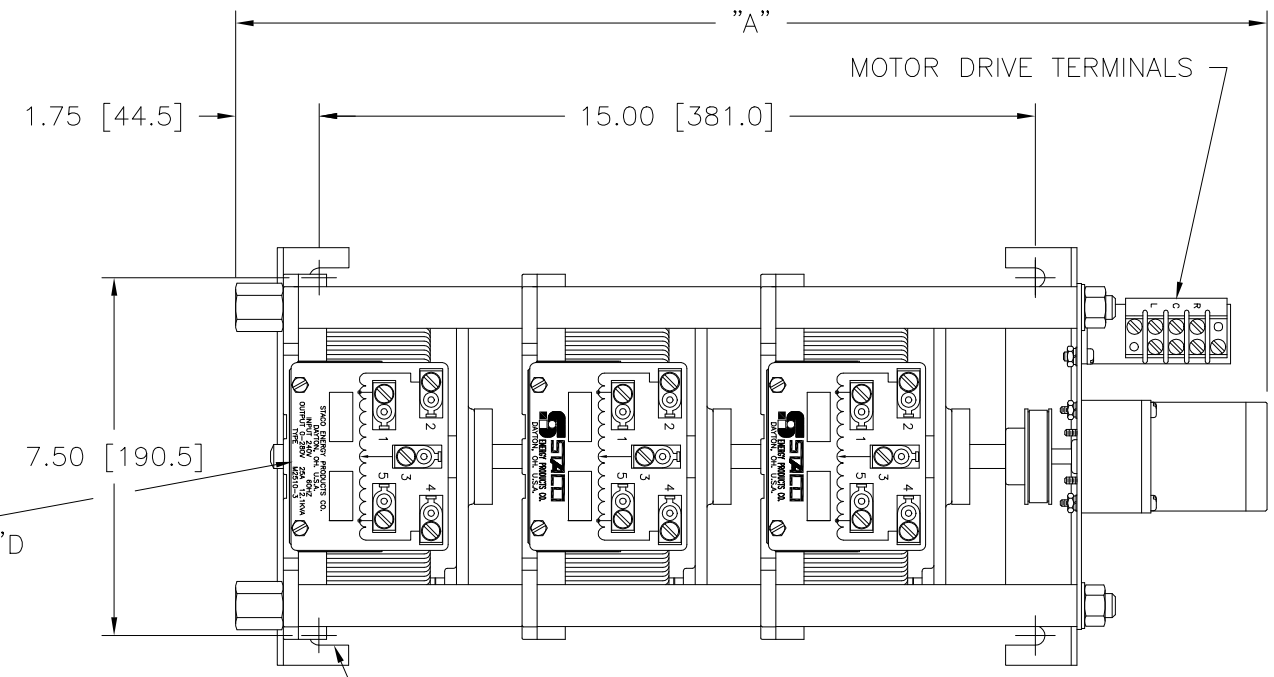




OPTIONAL TERMINALS FOR PUSH ON CONNECTIONS (.032 X .250) [0.8 X 6.4] SUPPLIED

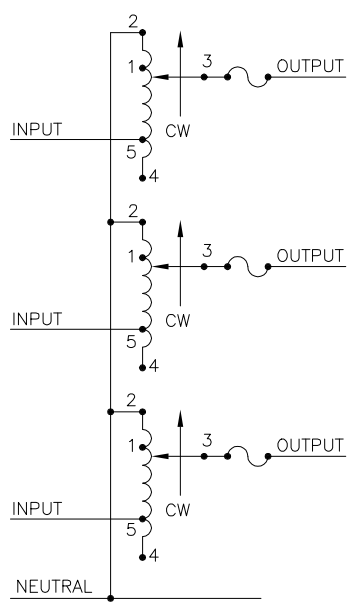
MARK MOTOR SPEED AS REQ'D

STANDOFFS TAPPED 1/2-13 X .50 (12.7) DEEP FOR MTG. BOLTS (4) PLACES

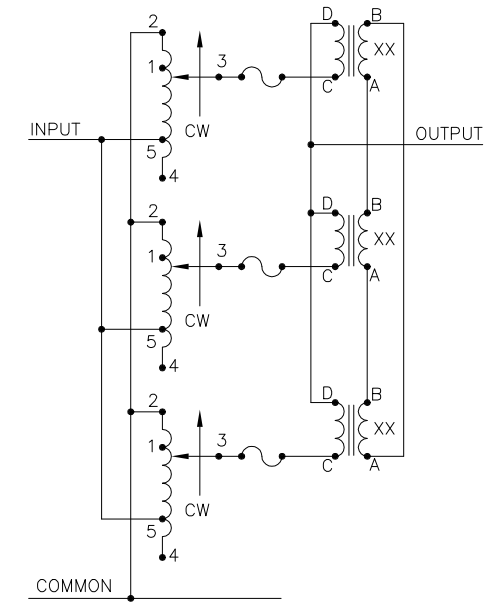


MOTOR CIRCUIT  
 120V, 50/60 HZ  
 \* ROTATION AS VIEWED FROM MOTOR END  
 MOTOR SPEED: SEE CHART

| SPEED (SECONDS) | MODEL NUMBER | DIM "A"       |
|-----------------|--------------|---------------|
| 5               | 5M2510-3 +   | 21.23 [539.2] |
| 15              | 15M2510-3 +  | 21.23 [539.2] |
| 30              | 30M2510-3 +  | 21.62 [549.1] |
| 60              | 60M2510-3 +  | 21.62 [549.1] |



SCHEMATIC THREE PHASE WYE FUSES RECOMMENDED BUT NOT SUPPLIED



SCHEMATIC SINGLE PHASE PARALLEL FUSES RECOMMENDED BUT NOT SUPPLIED

NOTES:

- ⌘ IF GANGED UNITS ARE USED IN A SYSTEM THAT ORDINARILY HAS A COMMON NEUTRAL OR GROUND BETWEEN SOURCE AND LOAD, THE NEUTRAL OR GROUND MUST BE CONNECTED TO THE COMMON TERMINALS OF THE VARIABLE TRANSFORMER ASSEMBLY. IF THE SYSTEM HAS NO NEUTRAL, THE LOAD MUST BE BALANCED OR THE TRANSFORMER WILL BE DAMAGED.
- XX REQUIRES THREE 51LAC PARALLELING CHOKES.
- JUMPER PROVIDED IN STANDARD COMMON POSITION AND SHOULD BE MOVED OR REMOVED AS REQUIRED.
- + MOTOR DRIVEN UNITS USE TERMINAL CONNECTIONS FOR CCW INCREASING VOLTAGE, AS VIEWED FROM THE BASE END.
- ++ LINE TO LINE VOLTAGE.

| WIRING                   | INPUT |       | OUTPUT |                       |          |                         | SHAFT ROTATION TO INCREASE VOLTAGE | TERMINAL CONNECTIONS FOR INCREASING VOLTAGE AS VIEWED FROM BASE END |        |        |          |
|--------------------------|-------|-------|--------|-----------------------|----------|-------------------------|------------------------------------|---|--------|--------|----------|
|                          | VOLTS | HERTZ | VOLTS  | CONSTANT CURRENT LOAD |          | CONSTANT IMPEDANCE LOAD |                                    | INPUT   | JUMPER | OUTPUT |          |
|                          |       |       |        | MAX. AMPS             | MAX. KVA | MAX. AMPS               |                                    |   |        |        | MAX. KVA |
| THREE PHASE WYE $\pi$    | 240   | 50/60 | 0-240  | 25                    | 10.40    | 30                      | 12.5                               | CW  | 2-2-2  | 4-4-4  | 3-3-3    |
|                          |       |       |        |                       |          |                         | CCW                                | 4-4-4   | 4-4-4  | 3-3-3  |          |
|                          |       |       |        |                       |          |                         | CW                                 | 1-1-1   | 4-4-4  | 3-3-3  |          |
| SINGLE PHASE PARALLEL XX | 120   | 50/60 | 0-120  | 75                    | 9.00     | 90                      | 10.8                               | CW  | 2-2-2  | 4-4-4  | -        |
|                          |       |       |        |                       |          |                         | CCW                                | 2-2-2   | 4-4-4  | -      | 2-D      |
|                          |       |       | 0-140  | 75                    | 10.50    | -                       | -                                  | CW  | 1-1-1  | 4-4-4  | -        |
|                          |       |       |        |                       |          |                         | CCW                                | 2-2-2   | 5-5-5  | -      | 2-D      |

UNLESS OTHERWISE SPECIFIED, TOLERANCE IS \* DECIMALS .005, HOLES .01, ANGLES 1°, DRAFT 1-1/2° UNITS IN [mm]

MATERIAL: ALL DIMENSIONS APPLY AFTER PLATING

TITLE: SPEC. CONTROL DRAWING MOTORIZED VARIABLE XFMR. TYPE: M2510-3

STACO ENERGY PRODUCTS CO. A COMPONENTS CORPORATION OF AMERICA COMPANY DAYTON, OHIO U.S.A.

DRAWN BY: TIM RAU DATE: 8/19/99 DO NOT SCALE DWG. CUSTOMER APPROVAL: DATE: \_\_\_\_\_

CHECKER: DATE: \_\_\_\_\_ WEIGHT APPROX. 78 LBS. CODE IDENT. NO. 83008 DWG. NO. 031-5165

ENGINEER: DATE: \_\_\_\_\_ SCALE: .5=1 SHEET 1 OF 1