



Chipsmall Limited consists of a professional team with an average of over 10 year of expertise in the distribution of electronic components. Based in Hongkong, we have already established firm and mutual-benefit business relationships with customers from,Europe,America and south Asia,supplying obsolete and hard-to-find components to meet their specific needs.

With the principle of “Quality Parts,Customers Priority,Honest Operation,and Considerate Service”,our business mainly focus on the distribution of electronic components. Line cards we deal with include Microchip,ALPS,ROHM,Xilinx,Pulse,ON,Everlight and Freescale. Main products comprise IC,Modules,Potentiometer,IC Socket,Relay,Connector.Our parts cover such applications as commercial,industrial, and automotives areas.

We are looking forward to setting up business relationship with you and hope to provide you with the best service and solution. Let us make a better world for our industry!



Contact us

Tel: +86-755-8981 8866 Fax: +86-755-8427 6832

Email & Skype: info@chipsmall.com Web: www.chipsmall.com

Address: A1208, Overseas Decoration Building, #122 Zhenhua RD., Futian, Shenzhen, China



Customer Information Sheet

DRAWING No.: M80-5000000MI-XX-XXX-00-000

IF IN DOUBT - ASK

(C)

NOT TO SCALE

THIRD ANGLE PROJECTION

ALL DIMENSIONS IN mm

SPECIFICATIONS:

MATERIAL:

MOULDING: GLASS FILLED PPS, UL94V-0, BLACK

COAX CONTACT:

BODY, SLEEVE, INNER CONTACT, END PLUG = COPPER ALLOY

LATCHING COLLAR = BERYLLIUM COPPER

INSULATOR = PTFE

JACKSCREW = STAINLESS STEEL

FINISH:

COAX CONTACT

BODY, SLEEVE, INNER CONTACT, END PLUG = GOLD

LATCHING COLLAR: = NICKEL

ELECTRICAL:

INSULATION RESISTANCE = $100M\Omega$ MIN

COAX CONTACT:

FREQUENCY RANGE = 6GHz

IMPEDANCE = 50Ω

V.S.W.R = $1.05 + (0.04 \times \text{FREQUENCY})$ GHz MAX

CONTACT RESISTANCE $6m\Omega$ MAX

INSULATION RESISTANCE = $10^6M\Omega$ @250V AC

OPERATING VOLTAGE = 180V AC @ 500mA

MAXIMUM VOLTAGE = 1000V AC

MECHANICAL:

DURABILITY = 500 OPERATIONS

COAX CONTACT:

INSERTION FORCE = 8N MAX

WITHDRAWAL FORCE = 0.5N MIN

ENVIRONMENTAL:

TEMPERATURE RANGE = -55°C TO +125°C

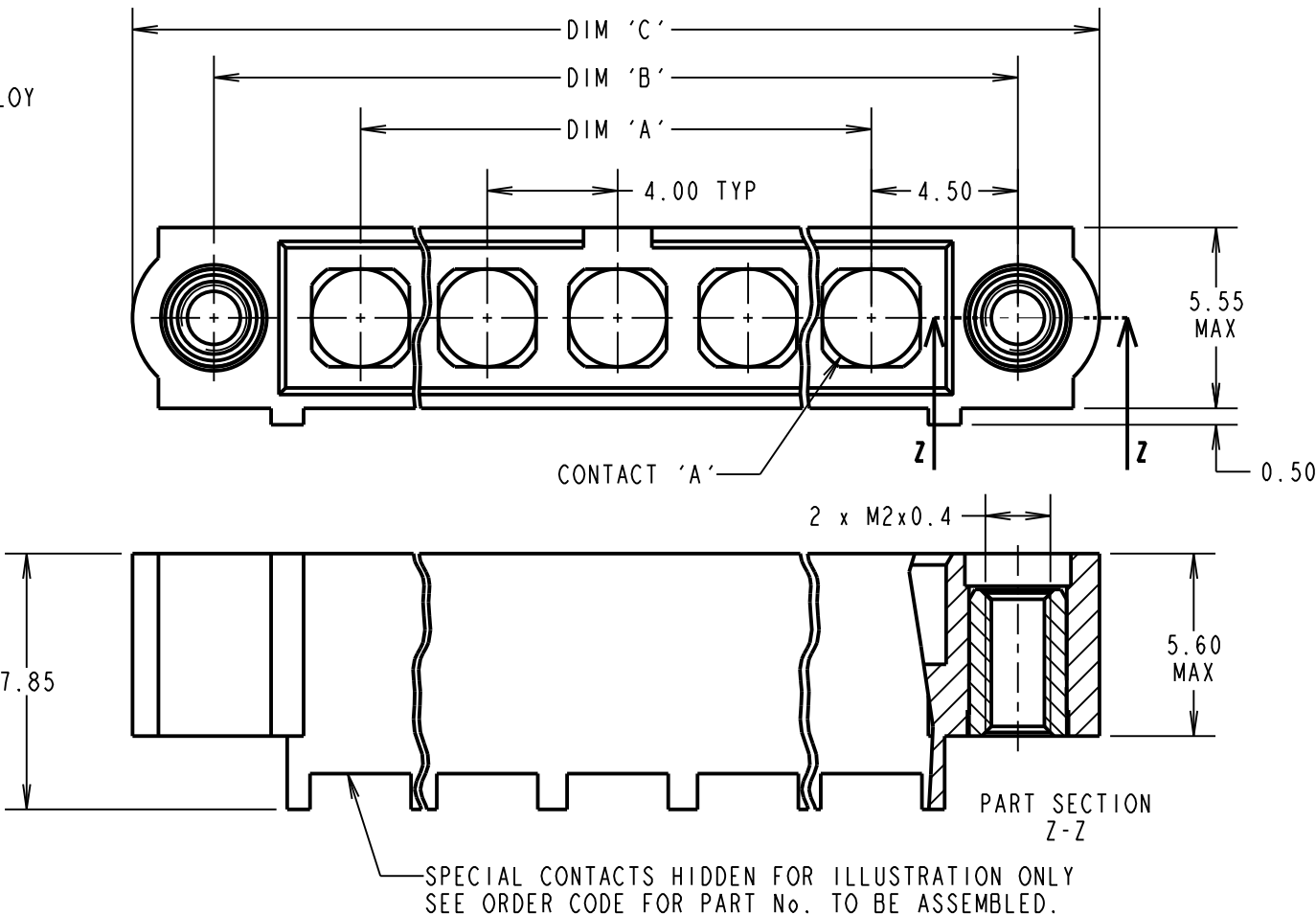
PACKING:

BAG

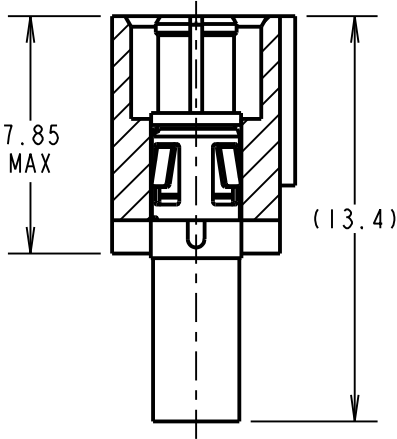
FOR COMPLETE SPECIFICATION SEE COMPONENT

SPECIFICATION C005XX (LATEST ISSUE)

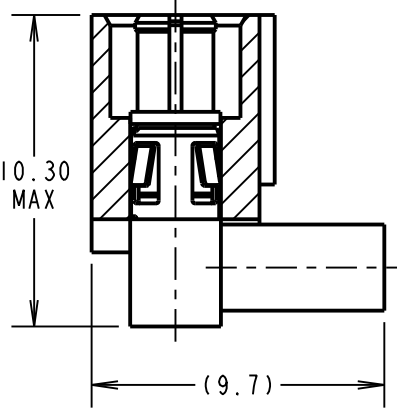
COAX CRIMP/SOLDER CONTACTS ONLY



M80-315/316/317 x No. OF CONTACTS



M80-318/319 x No. OF CONTACTS



ORDER CODE:(COAX CRIMP/SOLDER CONTACTS)

M80-5000000MI-XX-XXX-00-000

TOTAL No. OF CONTACTS
02 TO 12

SPECIAL CONTACTS (CRIMP)

315 = COAX CONTACT 2.0mm CRIMP M80-315

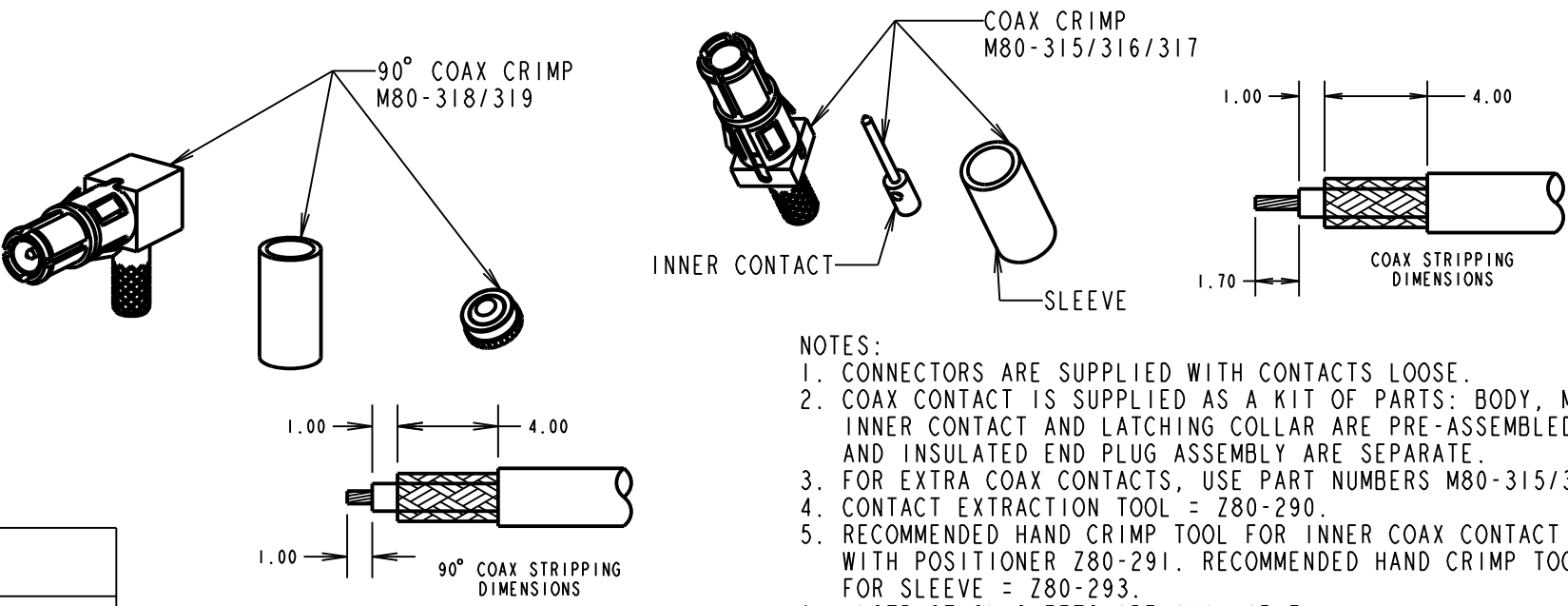
316 = COAX CONTACT 2.4mm CRIMP M80-316

317 = COAX CONTACT 2.7mm CRIMP M80-317

318 = COAX CONTACT 2.0mm HORZ' CRIMP M80-318

319 = COAX CONTACT 2.7mm HORZ' CRIMP M80-319

DIMENSION	CALCULATION
DIM 'A'	4 x No. OF CONTACTS - 4.00
DIM 'B'	4 x No. OF CONTACTS + 5.00
DIM 'C'	4 x No. OF CONTACTS + 10.00
EXAMPLE: CONNECTOR WITH 08 COAX CONTACTS, M80-5000000MI-08-315-00-000 DIM 'A' = 28.00mm, DIM 'B' = 37.00mm, DIM 'C' = 42.00mm	



NOTES:

- CONNECTORS ARE SUPPLIED WITH CONTACTS LOOSE.
- COAX CONTACT IS SUPPLIED AS A KIT OF PARTS: BODY, MAIN INSULATOR, INNER CONTACT AND LATCHING COLLAR ARE PRE-ASSEMBLED AND SLEEVE AND INSULATED END PLUG ASSEMBLY ARE SEPARATE.
- FOR EXTRA COAX CONTACTS, USE PART NUMBERS M80-315/316/317/318/319.
- CONTACT EXTRACTION TOOL = Z80-290.
- RECOMMENDED HAND CRIMP TOOL FOR INNER COAX CONTACT = Z80-292 WITH POSITIONER Z80-291. RECOMMENDED HAND CRIMP TOOL AND DIE SET FOR SLEEVE = Z80-293.
- INSTRUCTION SHEETS ARE AVAILABLE.

HARWIN

www.harwin.com
technical@harwin.com

THIS DRAWING AND ANY INFORMATION OR DESCRIPTIVE MATTER SET OUT HEREON ARE CONFIDENTIAL AND COPYRIGHT PROPERTY OF THE HARWIN GROUP AND MUST NOT BE DISCLOSED, LOANED, COPIED OR USED FOR MANUFACTURING, TENDERING OR FOR ANY OTHER PURPOSE WITHOUT THEIR WRITTEN PERMISSION.

TOLERANCES

X. = $\pm 1mm$
X.X = $\pm 0.25mm$
X.XX = $\pm 0.10mm$
X.XXX = $\pm 0.01mm$
ANGLES = $\pm 5^\circ$
UNLESS STATED

MATERIAL:

SEE ABOVE

FINISH: SEE ABOVE

S/AREA:

mm²

TITLE:

DATAMATE MIX-TEK
MALE ASSEMBLY
WITH JACKSCREW

DRAWING NUMBER:

M80-5000000MI-XX-XXX-00-000

SHT
5 OF 8

MGP	6	20.03.14	12429
NAME	ISS.	DATE	C/NOTE
APPROVED: MGP			
CHECKED: SB			
DRAWN: R.ADDE			
CUSTOMER REF.:			
ASSEMBLY DRG:			

Customer Information Sheet

DRAWING No.: M80-5000000MI-XX-XXX-00-000

IF IN DOUBT - ASK

C

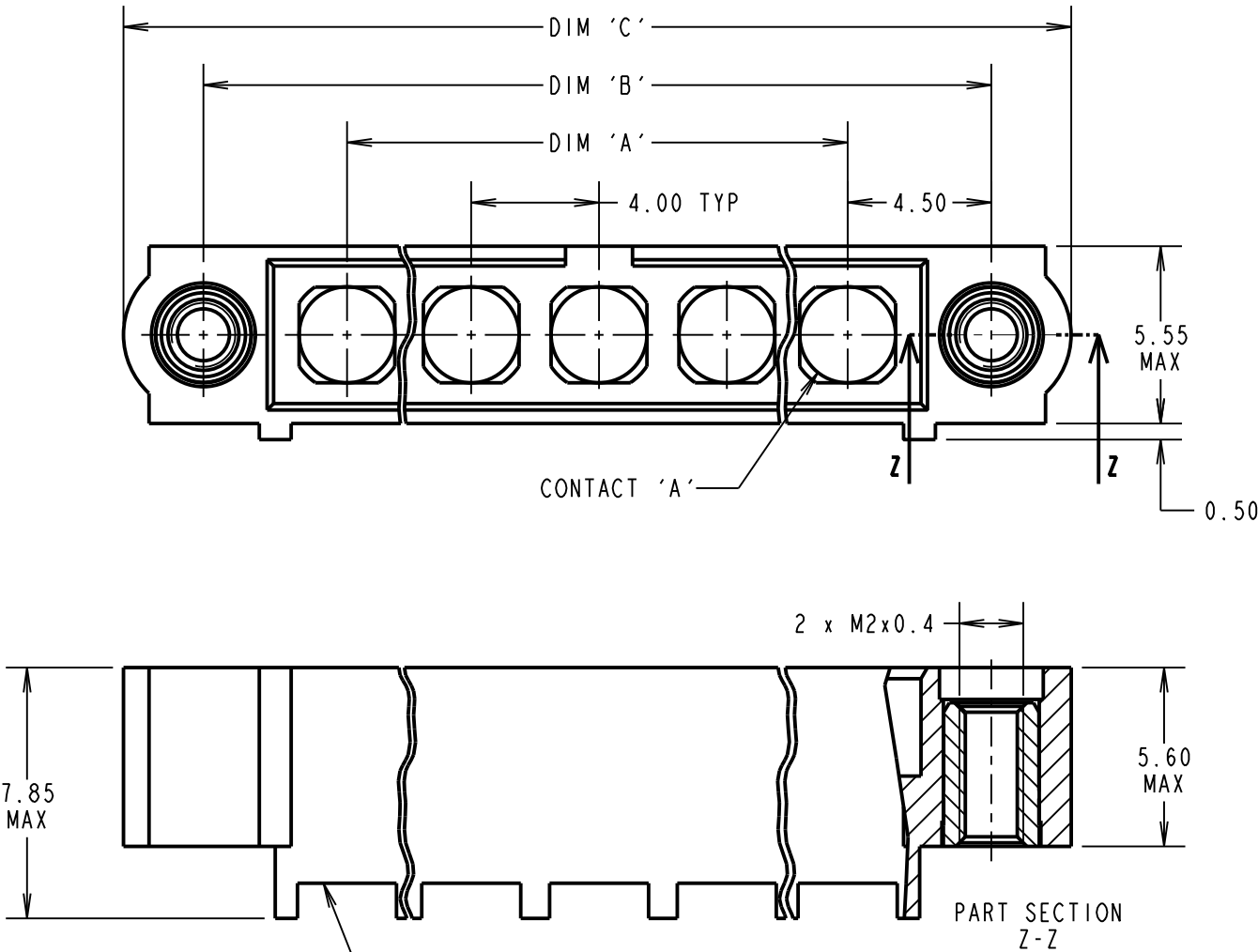
NOT TO SCALE

THIRD ANGLE PROJECTION

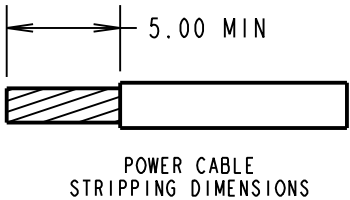
ALL DIMENSIONS IN mm

SPECIFICATIONS:
MATERIAL:
MOULDING: GLASS FILLED PPS, UL94V-0, BLACK
POWER CONTACT:
BODY = COPPER ALLOY
LATCHING COLLAR = BERYLLIUM COPPER
JACKSCREW: STAINLESS STEEL
FINISH:
POWER CONTACT:
8 TO 20A = 0.25µ MIN GOLD OVER NICKEL
40A = 0.76µ MIN GOLD OVER NICKEL
LATCHING COLLAR: = NICKEL
ELECTRICAL:
WORKING VOLTAGE = 800V AC/DC
VOLTAGE PROOF = 1200V AC/DC
INSULATION RESISTANCE = 100MΩ MIN
POWER CONTACT:
CONTACT RESISTANCE = 6mΩ MAX
CURRENT RATING:
M80-PM5 = 40A MAX WITH 10AWG,
M80-335 = 20A MAX WITH 12AWG,
M80-336 = 15A MAX WITH 14AWG,
M80-337 = 10A MAX WITH 16AWG,
M80-338 = 8A MAX WITH 18AWG,
M80-339 = 5A MAX WITH 20AWG,
CONTACT AS SPECIFIED.
MECHANICAL:
DURABILITY = 500 OPERATIONS
POWER CONTACT:
INSERTION FORCE:
8 TO 20A = 8N MAX
40A = 15N MAX
WITHDRAWAL FORCE = 0.5N MIN
ENVIRONMENTAL:
TEMPERATURE RANGE = -55°C TO +150°C
PACKING:
BAG
FOR COMPLETE SPECIFICATION SEE COMPONENT SPECIFICATION C005XX (LATEST ISSUE)

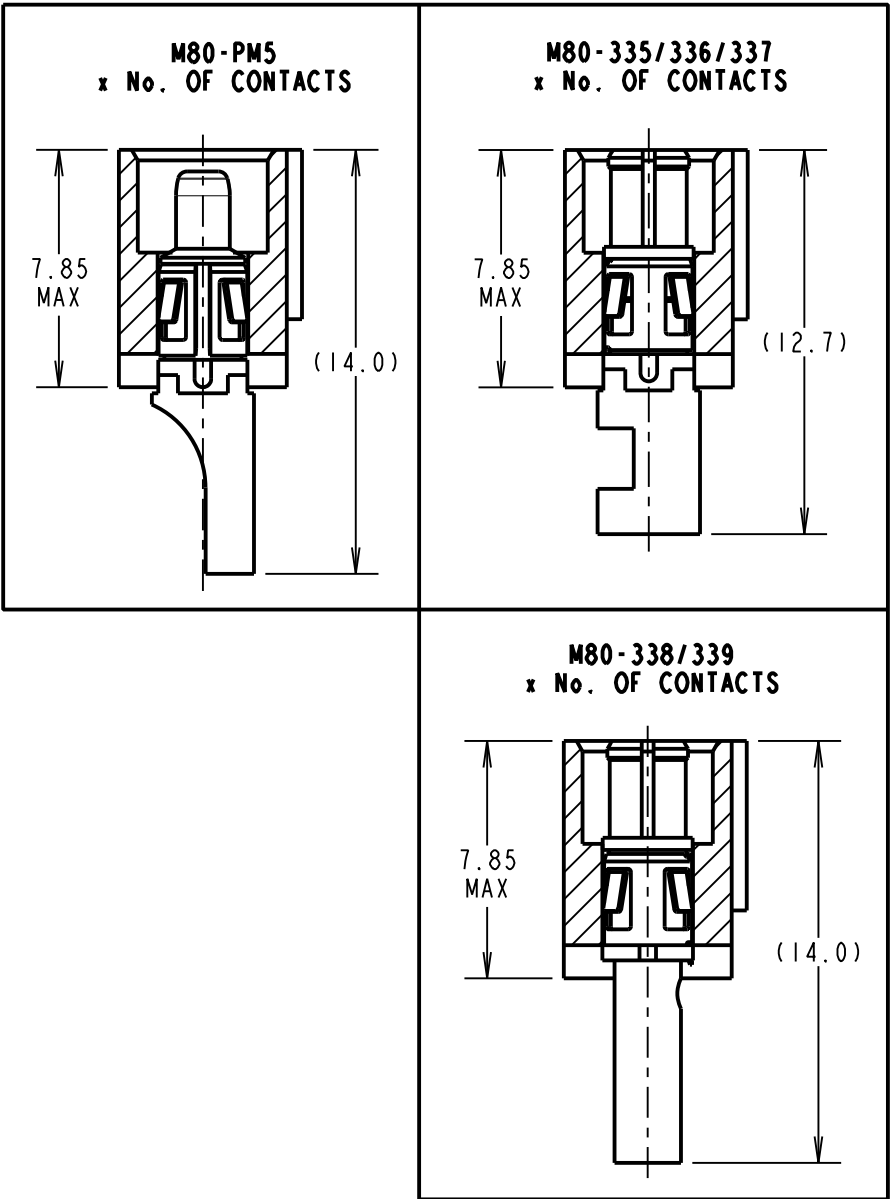
POWER CRIMP/SOLDER CONTACTS ONLY



SPECIAL CONTACTS HIDDEN FOR ILLUSTRATION ONLY
SEE ORDER CODE FOR PART No. TO BE ASSEMBLED.



POWER CABLE
STRIPPING DIMENSIONS



ORDER CODE: (POWER CRIMP/SOLDER CONTACTS)
M80-5000000MI-XX-XXX-00-000

TOTAL No. OF CONTACTS
02 TO 12

SPECIAL CONTACTS (CRIMP)
PM5 = POWER CONTACT 10AWG SOLDER M80-PM5
335 = POWER CONTACT 12AWG SOLDER M80-335
336 = POWER CONTACT 14AWG SOLDER M80-336
337 = POWER CONTACT 16AWG SOLDER M80-337
338 = POWER CONTACT 18AWG SOLDER/CRIMP M80-338
339 = POWER CONTACT 20AWG SOLDER/CRIMP M80-339

DIMENSION	CALCULATION
DIM 'A'	4 x No. OF CONTACTS - 4.00
DIM 'B'	4 x No. OF CONTACTS + 5.00
DIM 'C'	4 x No. OF CONTACTS + 10.00
EXAMPLE: CONNECTOR WITH 10 POWER CONTACTS, M80-5000000MI-10-335-00-000 DIM 'A' = 36.00mm, DIM 'B' = 45.00mm, DIM 'C' = 50.00mm	

- NOTES:
- CONNECTORS ARE SUPPLIED WITH CONTACTS LOOSE.
 - FOR EXTRA POWER CONTACTS USE PART NUMBERS:
M80-PF5/335/336/337/338/339.
 - CONTACT EXTRACTION TOOL = Z80-290.
 - RECOMMENDED HAND CRIMP TOOL FOR CONTACTS 338/339 = Z80-294 AND POSITIONER Z80-295.
 - INSTRUCTION SHEETS ARE AVAILABLE.

MGP	6	20.03.14	12429
NAME	ISS.	DATE	C/NOTE
APPROVED: MGP			
CHECKED: SB			
DRAWN: R.ADDE			
CUSTOMER REF.:			
ASSEMBLY DRG:			

HARWIN

www.harwin.com
technical@harwin.com

THIS DRAWING AND ANY INFORMATION OR DESCRIPTIVE MATTER SET OUT HEREON ARE CONFIDENTIAL AND COPYRIGHT PROPERTY OF THE HARWIN GROUP AND MUST NOT BE DISCLOSED, LOANED, COPIED OR USED FOR MANUFACTURING, TENDERING OR FOR ANY OTHER PURPOSE WITHOUT THEIR WRITTEN PERMISSION.

TOLERANCES
X. = ±1mm
X.X = ±0.25mm
X.XX = ±0.10mm
X.XXX = ±0.01mm
ANGLES = ±5°
UNLESS STATED

MATERIAL:

SEE ABOVE

FINISH:

SEE ABOVE

S/AREA:

mm²

TITLE:

DATAMATE MIX-TEK
MALE ASSEMBLY
WITH JACKSCREW

DRAWING NUMBER:

M80-5000000MI-XX-XXX-00-000

SHT
6 OF 8

Customer Information Sheet

DRAWING No.: M80-5000000MI-XX-XXX-00-000

IF IN DOUBT - ASK

©

NOT TO SCALE

THIRD ANGLE PROJECTION

ALL DIMENSIONS IN mm

SPECIFICATIONS:

MATERIAL:

MOULDING: GLASS FILLED PPS, UL94V-0, BLACK

COAX CONTACT:

BODY, INNER CONTACT, = COPPER ALLOY

INSULATOR = PTFE

JACKSCREW: STAINLESS STEEL

FINISH:

COAX CONTACT:

BODY, INNER CONTACT, = GOLD

ELECTRICAL:

INSULATION RESISTANCE = 100MΩ MIN

COAX CONTACT:

FREQUENCY RANGE = 6GHz

IMPEDANCE = 50 Ω

V.S.W.R = 1.05 + (0.04 x FREQUENCY) GHz MAX

CONTACT RESISTANCE 6 mΩ MAX

INSULATION RESISTANCE = 10⁶MΩ @250V AC

OPERATING VOLTAGE = 180V AC @ 500mA

MAXIMUM VOLTAGE = 1000V AC

MECHANICAL:

DURABILITY = 500 OPERATIONS

COAX CONTACT:

INSERTION FORCE = 8N MAX

WITHDRAWAL FORCE = 0.5N MIN

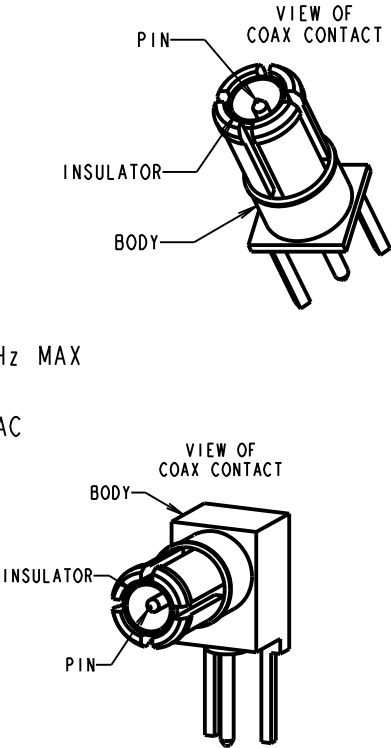
ENVIRONMENTAL:

TEMPERATURE RANGE = -55°C TO +125°C

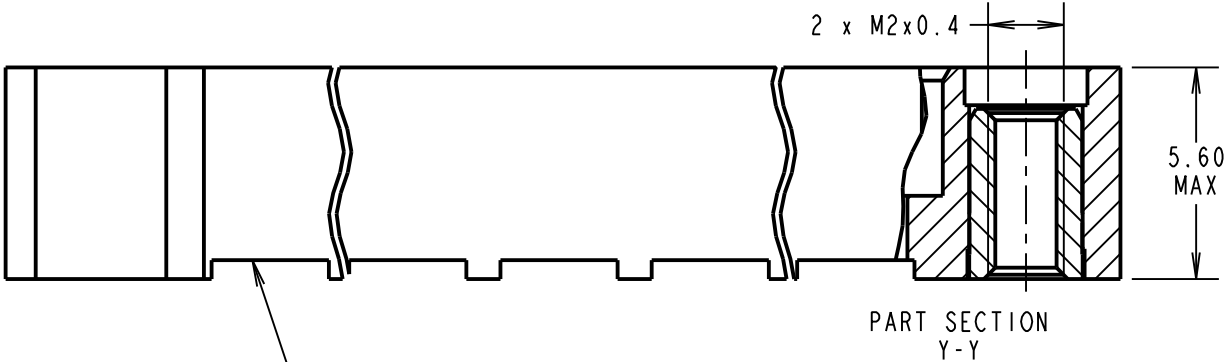
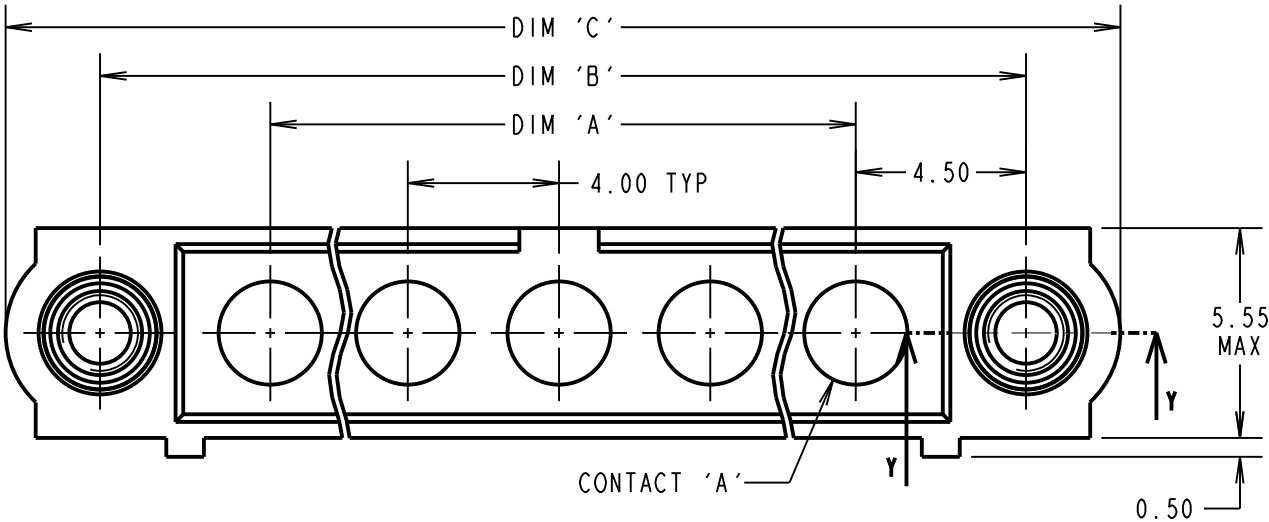
PACKING:

TUBE

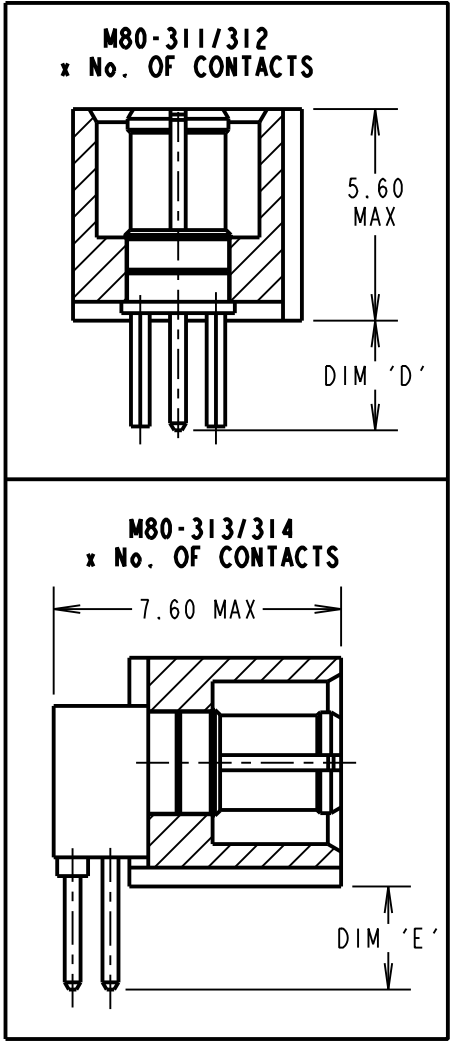
FOR COMPLETE SPECIFICATION SEE COMPONENT SPECIFICATION C005XX (LATEST ISSUE)



COAX PC TAIL CONTACTS ONLY



SPECIAL CONTACTS HIDDEN FOR ILLUSTRATION ONLY
SEE ORDER CODE FOR PART No. TO BE ASSEMBLED



ORDER CODE:
(COAX PC TAIL CONTACTS ONLY)
M80-5000000MI-XX-XXX-00-000

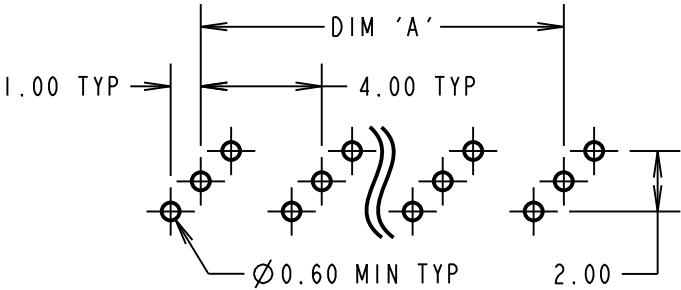
TOTAL No. OF CONTACTS
02 TO 12

SPECIAL CONTACTS (PC TAIL)

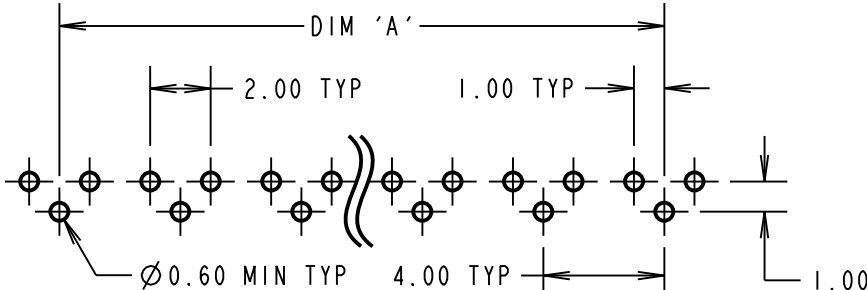
311 = COAX CONTACT 3.0mm PC TAIL M80-311
312 = COAX CONTACT 4.5mm PC TAIL M80-312
313 = COAX CONTACT 3.0mm HORZ' PC TAIL M80-313
314 = COAX CONTACT 4.5mm HORZ' PC TAIL M80-314

DIMENSION	CALCULATION
DIM 'A'	4 x No. OF CONTACTS - 4.00
DIM 'B'	4 x No. OF CONTACTS + 5.00
DIM 'C'	4 x No. OF CONTACTS + 10.00
DIM 'D'	M80-311 = 3.0mm, M80-312 = 4.5mm
DIM 'E'	M80-313 = 3.0mm, M80-314 = 4.5mm
EXAMPLE: CONNECTOR WITH 08 COAX CONTACTS, M80-5000000MI-08-313-00-000 DIM 'A' = 28.00mm, DIM 'B' = 37.00mm, DIM 'C' = 42.00mm DIM 'E' = 3.0mm	

RECOMMENDED PCB LAYOUTS FOR
COAX CONTACTS: M80-311/312



RECOMMENDED PCB LAYOUTS FOR
COAX CONTACTS: M80-313/314



HARWIN

www.harwin.com
technical@harwin.com

THIS DRAWING AND ANY
INFORMATION OR DESCRIPTIVE
MATTER SET OUT HEREON ARE
CONFIDENTIAL AND COPYRIGHT
PROPERTY OF THE HARWIN
GROUP AND MUST NOT BE
DISCLOSED, LOANED, COPIED
OR USED FOR MANUFACTURING,
TENDERING OR FOR ANY
OTHER PURPOSE WITHOUT
THEIR WRITTEN PERMISSION.

TOLERANCES
X. = ±1mm
X.X = ±0.25mm
X.XX = ±0.10mm
X.XXX = ±0.01mm
ANGLES = ±5°
UNLESS STATED

MATERIAL:

SEE ABOVE

FINISH:

SEE ABOVE

S/AREA:

mm²

TITLE:

DATAMATE MIX-TEK
MALE ASSEMBLY
WITH JACKSCREW

DRAWING NUMBER:

M80-5000000MI-XX-XXX-00-000

SHT

7 OF 8

MGP 6 20.03.14 12429

NAME ISS. DATE C/NOTE

APPROVED: MGP

CHECKED: SB

DRAWN: R.ADDE

CUSTOMER REF.:

ASSEMBLY DRG:

Customer Information Sheet

DRAWING No.: M80-5000000MI-XX-XXX-00-000

IF IN DOUBT - ASK

(C)

NOT TO SCALE

THIRD ANGLE PROJECTION

ALL DIMENSIONS IN mm

SPECIFICATIONS:

MATERIAL:
MOULDING: GLASS FILLED PPS, UL94V-0, BLACK
POWER CONTACT: COPPER ALLOY
JACKSCREW: STAINLESS STEEL

FINISH:
POWER CONTACT:
20A = 0.25µ MIN GOLD OVER NICKEL
40A = 0.76µ MIN GOLD OVER NICKEL

ELECTRICAL:
WORKING VOLTAGE = 800V AC/DC
VOLTAGE PROOF = 1200V AC/DC
INSULATION RESISTANCE = 100MΩ MIN

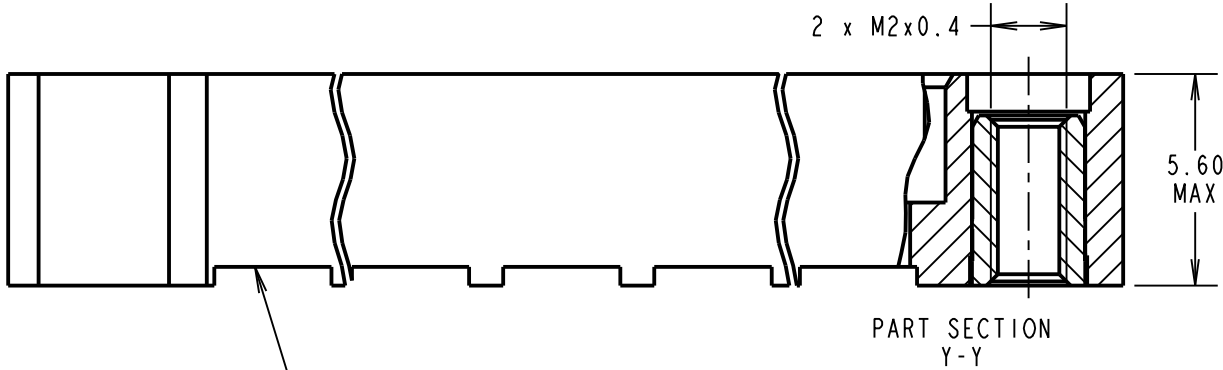
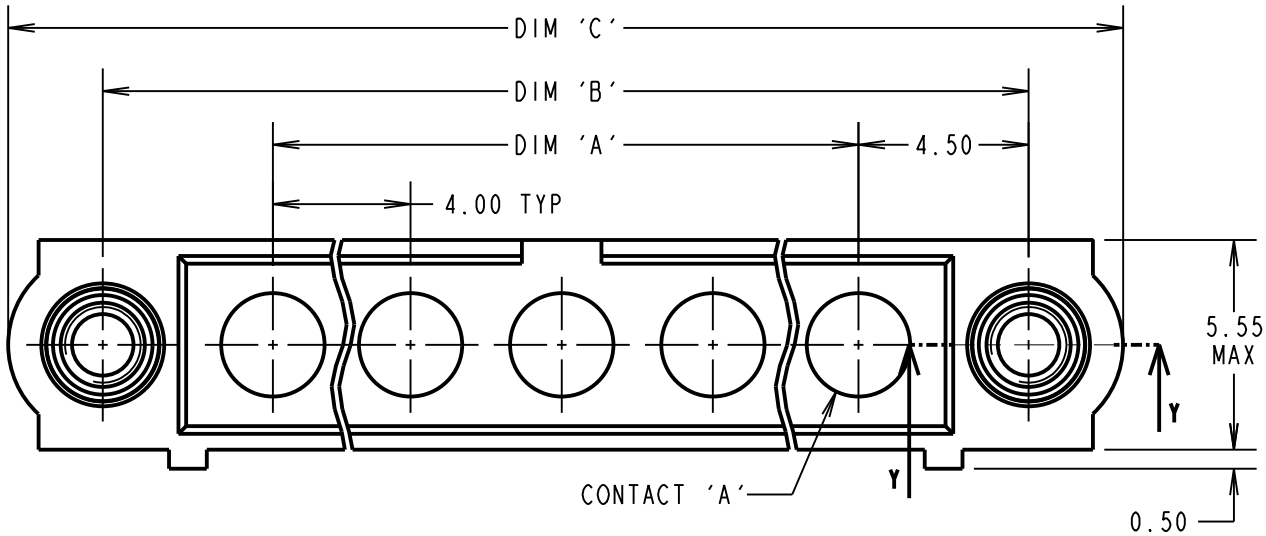
POWER CONTACT:
CONTACT RESISTANCE 6mΩ MAX
CURRENT RATING:
M80-331/332/333/334/33A = 20A MAX
M80-PM1/PM2/PM3/PM4 = 40A MAX

MECHANICAL:
DURABILITY = 500 OPERATIONS
POWER CONTACT:
INSERTION FORCE:
M80-331/332/323/324/33A = 8N MAX
M80-PM1/PM2/PM3/PM4 = 15N MAX
WITHDRAWAL FORCE = 0.5N MIN

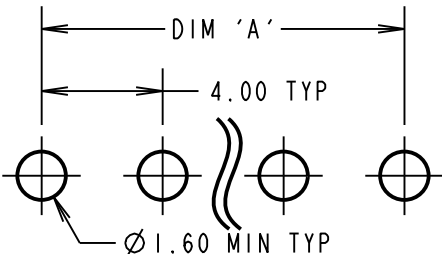
ENVIRONMENTAL:
TEMPERATURE RANGE = -55°C TO +150°C
PACKING:
TUBE

FOR COMPLETE SPECIFICATION SEE COMPONENT
SPECIFICATION C005XX (LATEST ISSUE)

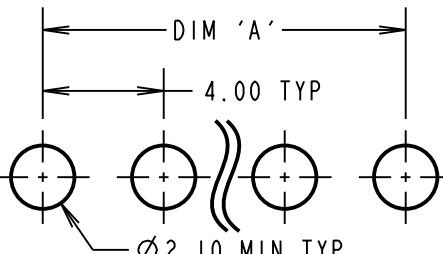
POWER PC TAIL AND SMT CONTACTS ONLY



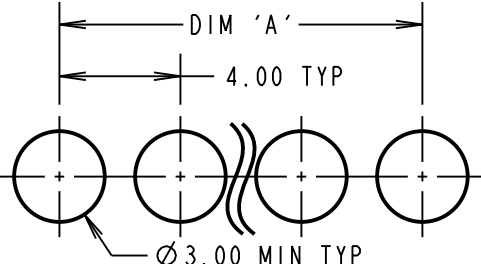
RECOMMENDED PCB LAYOUT FOR
M80-331/332/333/334
PC TAIL POWER CONTACTS



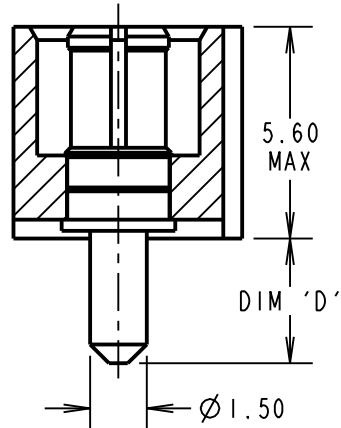
RECOMMENDED PCB LAYOUT FOR
M80-PM1/PM2/PM3/PM4
PC TAIL POWER CONTACTS



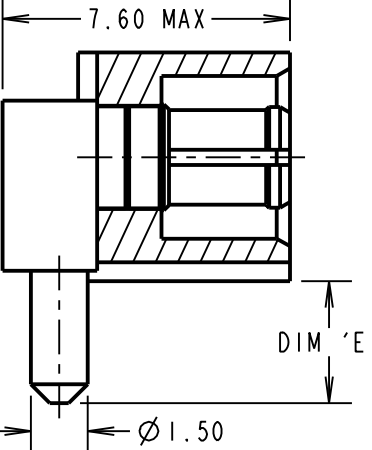
RECOMMENDED PCB LAYOUT FOR
M80-33A SMT POWER CONTACTS



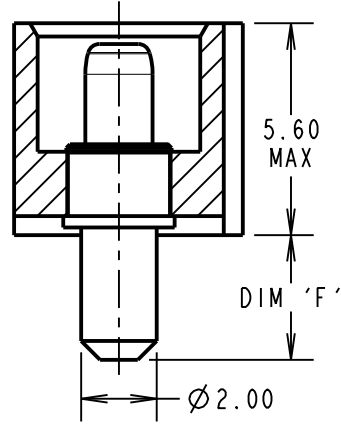
M80-331/332
x No. OF CONTACTS



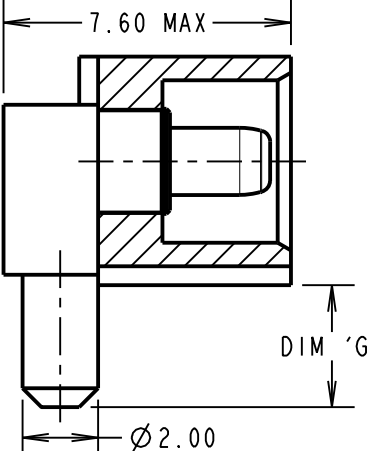
M80-333/334
x No. OF CONTACTS



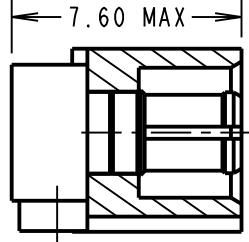
M80-PM1/PM2
x No. OF CONTACTS



M80-PM3/PM4
x No. OF CONTACTS



M80-33A
x No. OF CONTACTS



ORDER CODE:
(POWER PC TAIL AND SMT CONTACTS ONLY)
M80-5000000MI-XX-XXX-00-000

TOTAL No. OF CONTACTS
02 TO 12

SPECIAL CONTACTS (PC TAIL)
331 = 20A POWER CONTACT 3.0mm VERT' PC TAIL M80-331
332 = 20A POWER CONTACT 4.5mm VERT' PC TAIL M80-332
333 = 20A POWER CONTACT 3.0mm HORZ' PC TAIL M80-333
334 = 20A POWER CONTACT 4.5mm HORZ' PC TAIL M80-334
33A = 20A POWER CONTACT HORIZONTAL SMT M80-33A
PM1 = 40A POWER CONTACT 3.0mm VERT' PC TAIL M80-PM1
PM2 = 40A POWER CONTACT 4.5mm VERT' PC TAIL M80-PM2
PM3 = 40A POWER CONTACT 3.0mm HORZ' PC TAIL M80-PM3
PM4 = 40A POWER CONTACT 4.5mm HORZ' PC TAIL M80-PM4

DIMENSION	CALCULATION
DIM 'A'	4 x No. OF CONTACTS - 4.00
DIM 'B'	4 x No. OF CONTACTS + 5.00
DIM 'C'	4 x No. OF CONTACTS + 10.00
DIM 'D'	M80-331 = 3.5mm, M80-332 = 5.0mm
DIM 'E'	M80-333 = 3.5mm, M80-334 = 5.0mm
DIM 'F'	M80-PM1 = 3.5mm, M80-PM2 = 5.0mm
DIM 'G'	M80-PM3 = 3.5mm, M80-PM4 = 5.0mm

EXAMPLE: CONNECTOR WITH 10 POWER CONTACTS,
M80-5000000MI-10-334-00-000
DIM 'A' = 36.00mm, DIM 'B' = 45.00mm, DIM 'C' = 50.00mm
DIM 'E' = 4.5mm

HARWIN
www.harwin.com
technical@harwin.com

THIS DRAWING AND ANY
INFORMATION OR DESCRIPTIVE
MATTER SET OUT HEREON ARE
CONFIDENTIAL AND COPYRIGHT
PROPERTY OF THE HARWIN
GROUP AND MUST NOT BE
DISCLOSED, LOANED, COPIED
OR USED FOR MANUFACTURING,
TENDERING OR FOR ANY
OTHER PURPOSE WITHOUT
THEIR WRITTEN PERMISSION.

TOLERANCES
X. = ±1mm
X.X = ±0.25mm
X.XX = ±0.10mm
X.XXX = ±0.01mm
ANGLES = ±5°
UNLESS STATED

MATERIAL:
SEE ABOVE
FINISH: SEE ABOVE
S/AREA: mm²

TITLE: DATAMATE MIX-TEK
MALE ASSEMBLY
WITH JACKSCREW
DRAWING NUMBER:
M80-5000000MI-XX-XXX-00-000
SHT 8 OF 8

MGP 6 20.03.14 12429
NAME ISS. DATE C/NOTE
APPROVED: MGP
CHECKED: SB
DRAWN: R.ADDE
CUSTOMER REF.:
ASSEMBLY DRG: