



Chipsmall Limited consists of a professional team with an average of over 10 year of expertise in the distribution of electronic components. Based in Hongkong, we have already established firm and mutual-benefit business relationships with customers from,Europe,America and south Asia,supplying obsolete and hard-to-find components to meet their specific needs.

With the principle of “Quality Parts,Customers Priority,Honest Operation,and Considerate Service”,our business mainly focus on the distribution of electronic components. Line cards we deal with include Microchip,ALPS,ROHM,Xilinx,Pulse,ON,Everlight and Freescale. Main products comprise IC,Modules,Potentiometer,IC Socket,Relay,Connector.Our parts cover such applications as commercial,industrial, and automotives areas.

We are looking forward to setting up business relationship with you and hope to provide you with the best service and solution. Let us make a better world for our industry!



Contact us

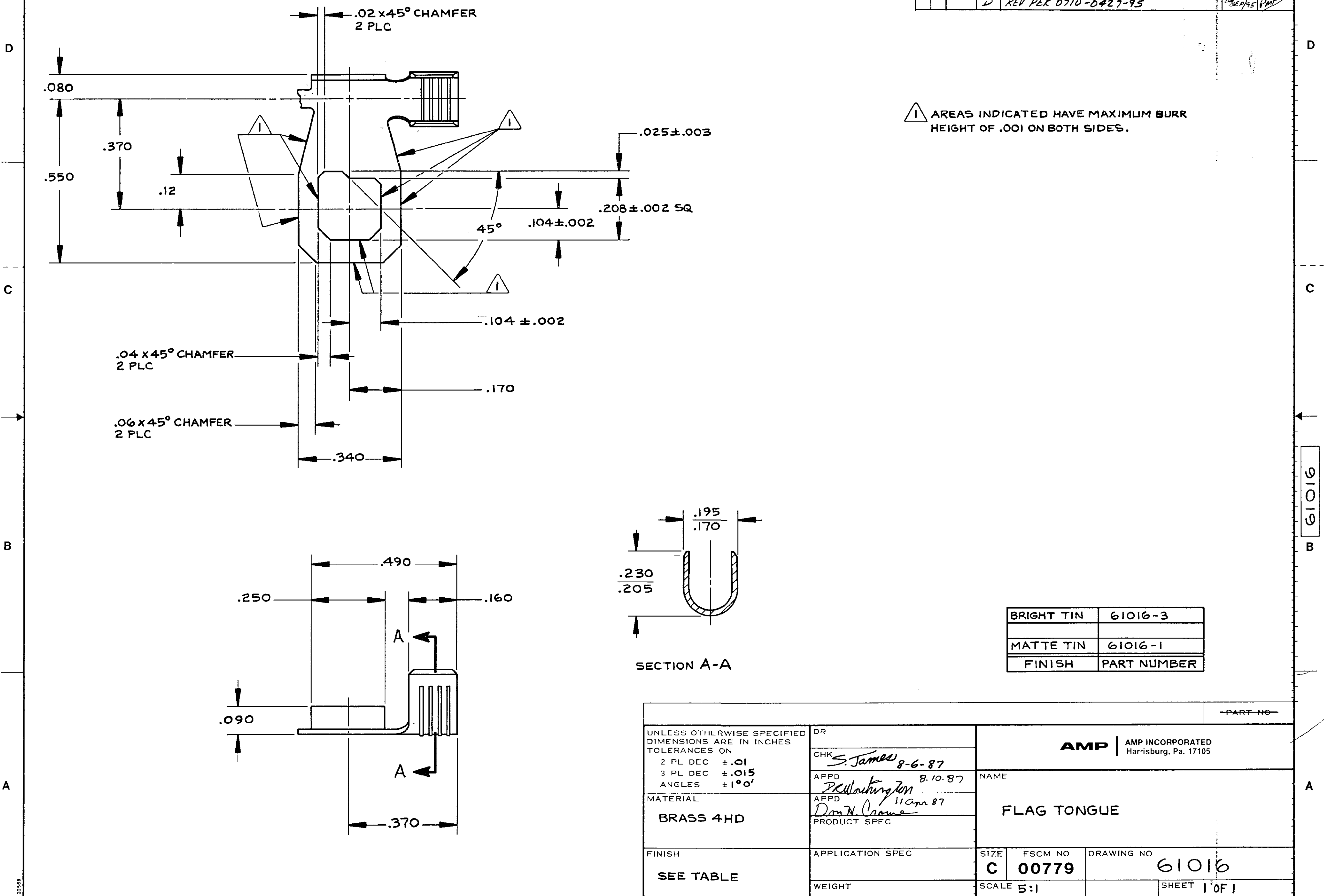
Tel: +86-755-8981 8866 Fax: +86-755-8427 6832

Email & Skype: info@chipsmall.com Web: www.chipsmall.com

Address: A1208, Overseas Decoration Building, #122 Zhenhua RD., Futian, Shenzhen, China



LOC	DIST	REVISIONS				DATE	APPD
AF	50	P	F	ZONE	LTR	DESCRIPTION	
					C	RELEASED - 3 PER PRGM 87-83 &	8-6 87 ST
					D	REDRAWN PER STANDARDS	2019/45 PNE
						REV PER 0710-0427-95	



BRIGHT TIN	61016-3
MATTE TIN	61016-1
FINISH	PART NUMBER

UNLESS OTHERWISE SPECIFIED DIMENSIONS ARE IN INCHES TOLERANCES ON		AMP AMP INCORPORATED Harrisburg, Pa. 17105	
2 PL DEC ± .01	CHK <i>S. James</i> 8-6-87	NAME	
3 PL DEC ± .015	APPD <i>Paula H. Johnson</i> 8.10.87	FLAG TONGUE	
ANGLES ± 1° 0'	APPD <i>Don N. Cramer</i> 11 Apr 87	DRAWING NO 61016	
MATERIAL BRASS 4HD	PRODUCT SPEC	SIZE C	FSCM NO 00779
FINISH SEE TABLE	APPLICATION SPEC	SCALE 5:1	SHEET 1 OF 1
WEIGHT		PART NO	