



Chipsmall Limited consists of a professional team with an average of over 10 year of expertise in the distribution of electronic components. Based in Hongkong, we have already established firm and mutual-benefit business relationships with customers from,Europe,America and south Asia,supplying obsolete and hard-to-find components to meet their specific needs.

With the principle of “Quality Parts,Customers Priority,Honest Operation,and Considerate Service”,our business mainly focus on the distribution of electronic components. Line cards we deal with include Microchip,ALPS,ROHM,Xilinx,Pulse,ON,Everlight and Freescale. Main products comprise IC,Modules,Potentiometer,IC Socket,Relay,Connector.Our parts cover such applications as commercial,industrial, and automotives areas.

We are looking forward to setting up business relationship with you and hope to provide you with the best service and solution. Let us make a better world for our industry!



Contact us

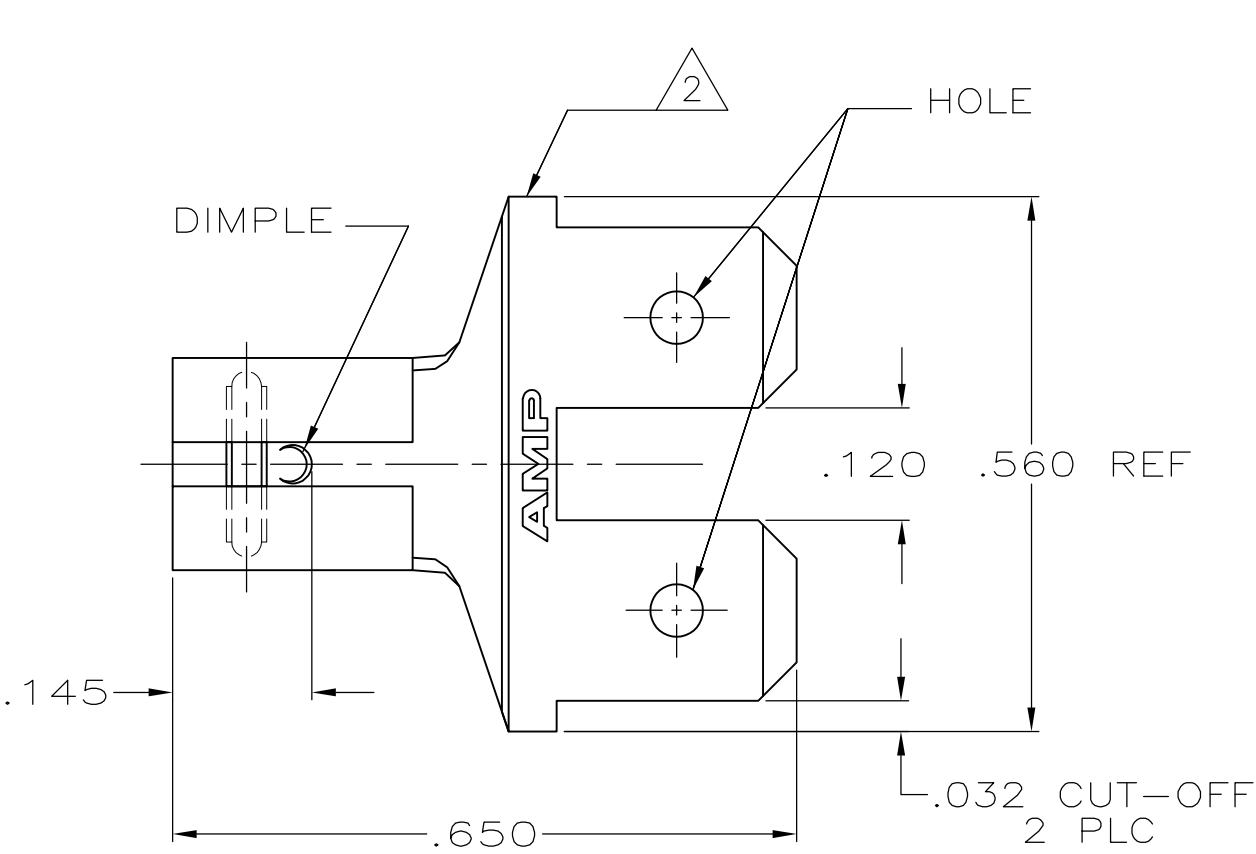
Tel: +86-755-8981 8866 Fax: +86-755-8427 6832

Email & Skype: info@chipsmall.com Web: www.chipsmall.com

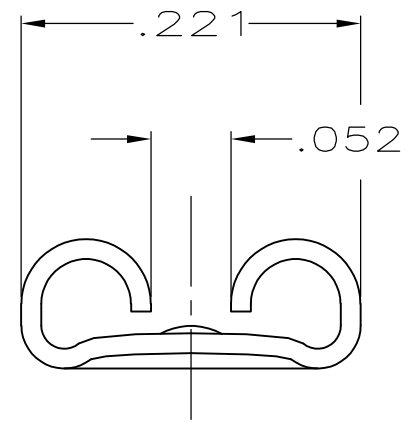
Address: A1208, Overseas Decoration Building, #122 Zhenhua RD., Futian, Shenzhen, China



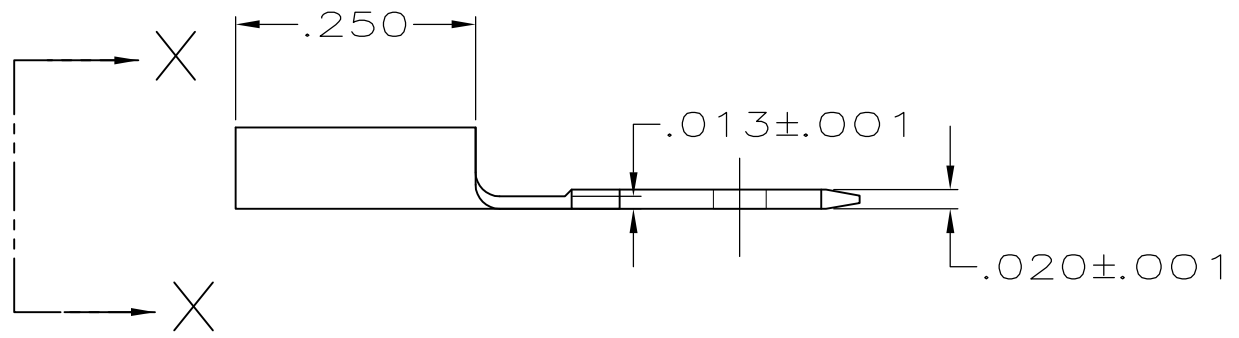
LOC	DIST	REVISIONS					
AF	50	P	LTR	DESCRIPTION	DATE	DWN	APVD
			H	REVISED PER ECR-12-013459	28NOV2012	KH	PD



1 SUPPLIED IN LOOSE PIECE.
2 BARE EDGES PERMITTED.



VIEW X-X
SCALE 8:1



OBSOLETE	.020	TIN	61045-2
		-	61045-1
	MATING TAB THK	FINISH	PART NUMBER

THIS DRAWING IS A CONTROLLED DOCUMENT.

DIMENSIONS:
INCHES

MATERIAL
BRASS

TOLERANCES UNLESS OTHERWISE SPECIFIED:

0 PLC	± -
1 PLC	± -
2 PLC	± -
3 PLC	± .015
4 PLC	± -
ANGLES	± -

FINISH
SEE TABLE

DWN
JR RUTH
9/15/92

CHK
MS FEHER
9/15/92

APVD
C MEYERS
9/15/92

PRODUCT SPEC
-

APPLICATION SPEC
-

WEIGHT
-

STE

TE Connectivity

ADAPTER, FASTON, .187 SERIES

SIZE
A3

CAGE CODE
00779

DRAWING NO
C-61045

RESTRICTED TO
-

CUSTOMER DRAWING

SCALE
5:1

SHEET
1 OF 1

REV
H