



Chipsmall Limited consists of a professional team with an average of over 10 year of expertise in the distribution of electronic components. Based in Hongkong, we have already established firm and mutual-benefit business relationships with customers from,Europe,America and south Asia,supplying obsolete and hard-to-find components to meet their specific needs.

With the principle of “Quality Parts,Customers Priority,Honest Operation,and Considerate Service”,our business mainly focus on the distribution of electronic components. Line cards we deal with include Microchip,ALPS,ROHM,Xilinx,Pulse,ON,Everlight and Freescale. Main products comprise IC,Modules,Potentiometer,IC Socket,Relay,Connector.Our parts cover such applications as commercial,industrial, and automotives areas.

We are looking forward to setting up business relationship with you and hope to provide you with the best service and solution. Let us make a better world for our industry!



## Contact us

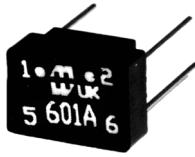
Tel: +86-755-8981 8866 Fax: +86-755-8427 6832

Email & Skype: info@chipsmall.com Web: www.chipsmall.com

Address: A1208, Overseas Decoration Building, #122 Zhenhua RD., Futian, Shenzhen, China



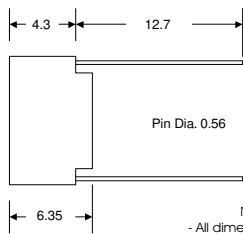
# P.C. Board Mount



## PULSE TRANSFORMERS

- These ferrite cored transformers are fully encapsulated in a high grade black molded case with a UL94V-O rating.
- Used in digital and data processing, line coupling, matching, isolation etc.
- Working voltage rating maximum of 500V D.C.
- ET values up to 50V uS.

Cat. No.	Turns Ratio +/- 2%	Primary Inductance uH (min)	Primary ET Constant V uS	Inter. W Capacity p.f. max.	Leakage Inductance uH max.	D.C. Resistance Ohms max.	Cir. Dia.
600AA	1:1	2060	17.5	35	0.6	1.5	A
600BA	1:1	492	8.5	20	0.3	0.8	A
600CA	1:1	219	5.5	12	0.25	0.5	A
600PA	1:1	323	7	12	0.3	0.6	B
602GA	2:1	2.7	3	3	0.9	0.2	B
601A	1:1	2060	17.5	45	0.6	1.5	B
601B	1:1	492	8.5	20	0.3	0.8	B
601C	1:1	219	5.5	12	0.25	0.5	B
601D	1:1	50	4	10	0.2	0.4	B
601E	1:1	23	2.5	8	0.2	0.3	B
601F	1:1	9.5	6	10	0.2	0.4	B
602A	1:1:1	2060	17.5	35	0.6	1.5	C
602B	1:1:1	492	8.5	20	0.3	0.8	C
602C	1:1:1	219	5.5	12	0.25	0.5	C



NOTES:  
- All dimensions in mm  
- Pins 3 & 4 are omitted on circuit diagram A & B units

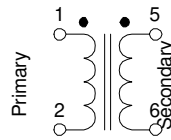
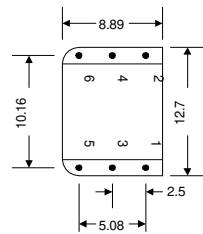


Diagram A

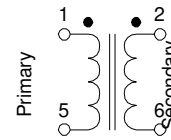


Diagram B

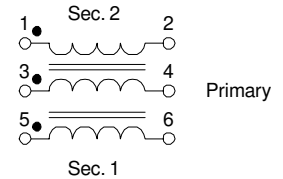
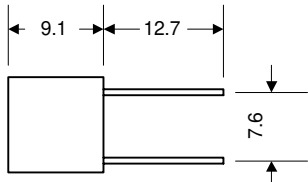
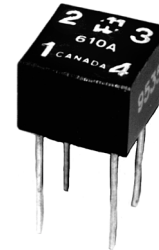
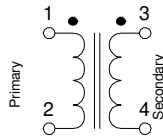
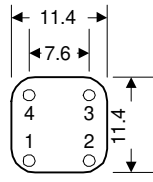


Diagram C

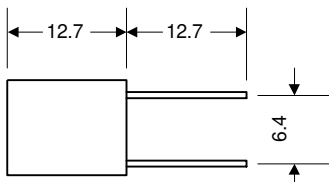
## 610A Dimensions & Schematic



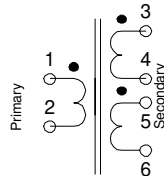
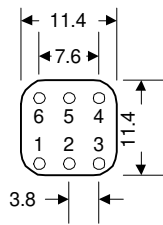
Note: All dimensions in mm



## 610B Dimensions & Schematic



Note: All dimensions in mm

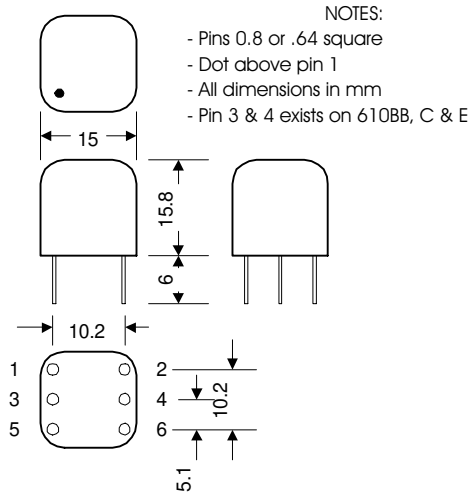


## PULSE TRANSFORMERS

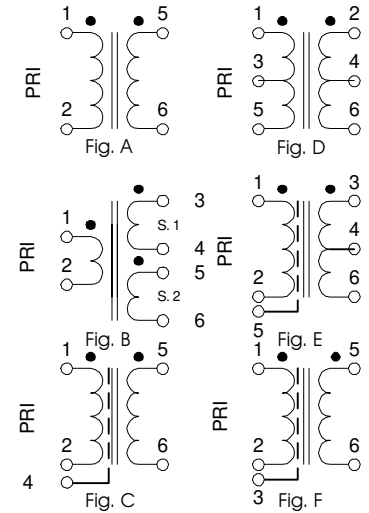
- These ferrite cored transformers are fully encapsulated in a high grade black molded case with a UL94V-O rating.
- Units are intended for wide band and pulse applications including thyristor / triac firing circuits.
- Peak pulse voltage rating maximum of 250V.
- Insulation tested to 1,000V RMS.

Cat. No.	Ratio	Primary		Secondary Resistance		Primary ET Constant V (uS).	Leakage Inductance uH (max.)	Max. Primary or Secondary Current	
		Inductance mH (min)	Resistance Ohms	Sec. 1 (Ohms)	Sec. 2 (Ohms)			@ 0.1% Duty	@ 0.01% Duty
610A	1:1	3.9	3.4	3.9	-	500	60	0.2A	0.6A
610B	1:1:1	2.7	2.1	2.1	2.3	500	50	0.2A	0.6A





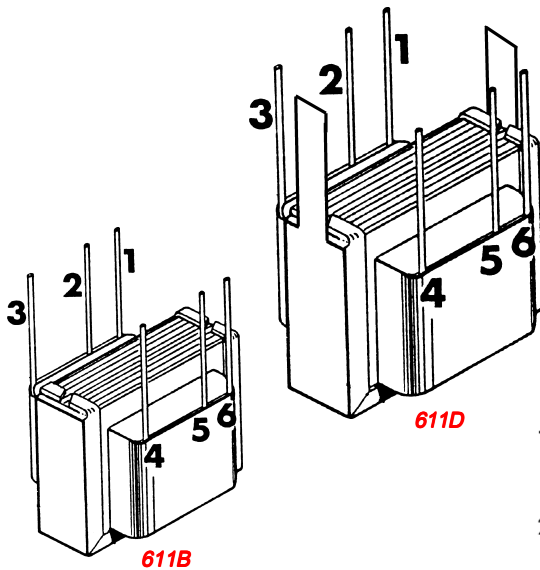
## PULSE TRANSFORMERS



- These ferrite cored transformers are fully encapsulated in a high grade black molded case with a UL94V-O rating.
- Units are intended for wide band and pulse applications including thyristor / triac firing circuits, signal isolation, line matching, low power switch mode power supplies, etc.
- Working voltage rating maximum of 500V RMS
- All units are voltage proof tested to 2.0KV peak 50 Hz.

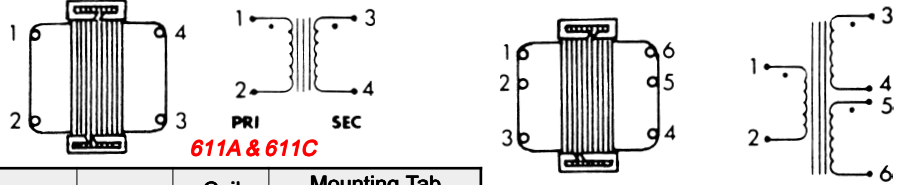
Cat. No.	Ratio	Primary		Leakage Inductance uH (max)	Capacity pf. (max)	D.C. Winding Resistance (ohms)			Sch. Fig. #	Remarks
		Inductance mH (min)	ET Constant V (uS)			Pri.	Sec. 1	Sec. 2		
610AA	1:1	3	200	22	23	1.2	1	-	A	-
610BB	1:1:1	3	200	9	28	1.4	1.3	1.7	B	-
610C	2:1:1	12	400	35	30	4	1.8	2.4	B	-
610D	1:1 & Shld	3	200	32	15	1.3	1	-	C	610AA plus electrostatic shield
610E	1:1:1	22	550	85	18	10.6	8.9	12.2	B	-
610F	1 ct: 1 ct	3	200	22	23	1.2	1	-	D	610AA with center taps
610G	1:1 ct & Shld	12	400	100	11	3.8	5.3	-	E	includes electrostatic shield
610H	1:2 ct & Shld	1.5	140	15	15	1.2	2.6	-	F	includes electrostatic shield

## PULSE TRANSFORMERS



- Economical, open style, P. C. board pin mount
- Units are intended for pulse applications including thyristor / triac firing circuits.

Cat. No.	Ratio	Circuit Max. Volts	Primary		D.C. Winding Resistance		Insulation RMS (Volts)	Wt. Oz.
			Inductance mH (min)	D.C. Res. (Ohms)	Sec. 1 (Ohms)	Sec. 2 (Ohms)		
611A	1:1	125	8.6	0.45	0.55	-	1000	0.7
611B	1:1:1	125	17.2	1.26	1.0	1.53	1000	0.7
611C	1:1	250	56	3.31	4.46	-	1500	1.2
611D	1:1:1	250	17	1.73	1.31	2.12	1500	1.2



Cat. No.	Pin Spacing	Height	Width	Coil Depth	Mounting Tab	
					Centers	Size
611A & 611B	0.2" x 0.6"	.69"	.82"	.57"	-	-
611C & 611D	0.2" x 0.6"	.82"	1.06"	.82"	1"	.12" x .25"

Pulse

CANADA

Phone: (519) 822-2960 Fax: (519) 822-0715

USA

Phone: (716) 651-0086 Fax: (716) 651-0726



© 2000

**HAMMOND MANUFACTURING™**  
www.hammondmfg.com