



Chipsmall Limited consists of a professional team with an average of over 10 year of expertise in the distribution of electronic components. Based in Hongkong, we have already established firm and mutual-benefit business relationships with customers from,Europe,America and south Asia,supplying obsolete and hard-to-find components to meet their specific needs.

With the principle of “Quality Parts,Customers Priority,Honest Operation,and Considerate Service”,our business mainly focus on the distribution of electronic components. Line cards we deal with include Microchip,ALPS,ROHM,Xilinx,Pulse,ON,Everlight and Freescale. Main products comprise IC,Modules,Potentiometer,IC Socket,Relay,Connector.Our parts cover such applications as commercial,industrial, and automotives areas.

We are looking forward to setting up business relationship with you and hope to provide you with the best service and solution. Let us make a better world for our industry!



## Contact us

Tel: +86-755-8981 8866 Fax: +86-755-8427 6832

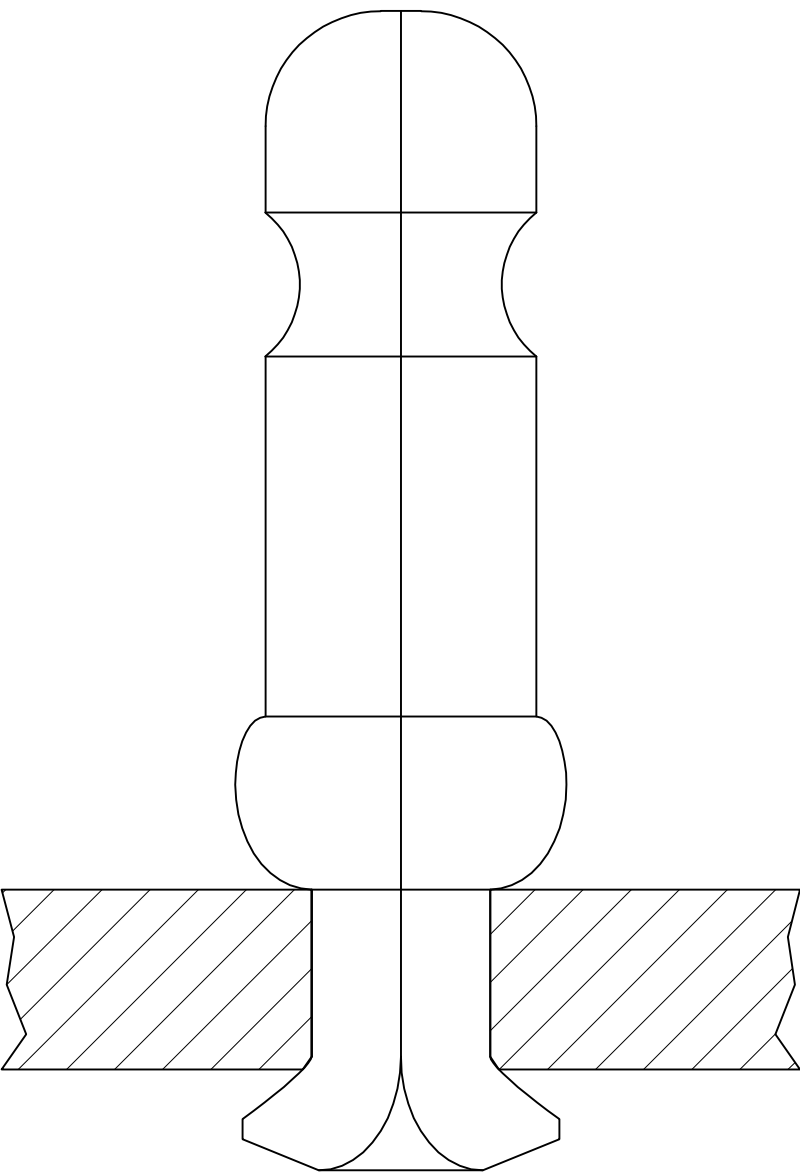
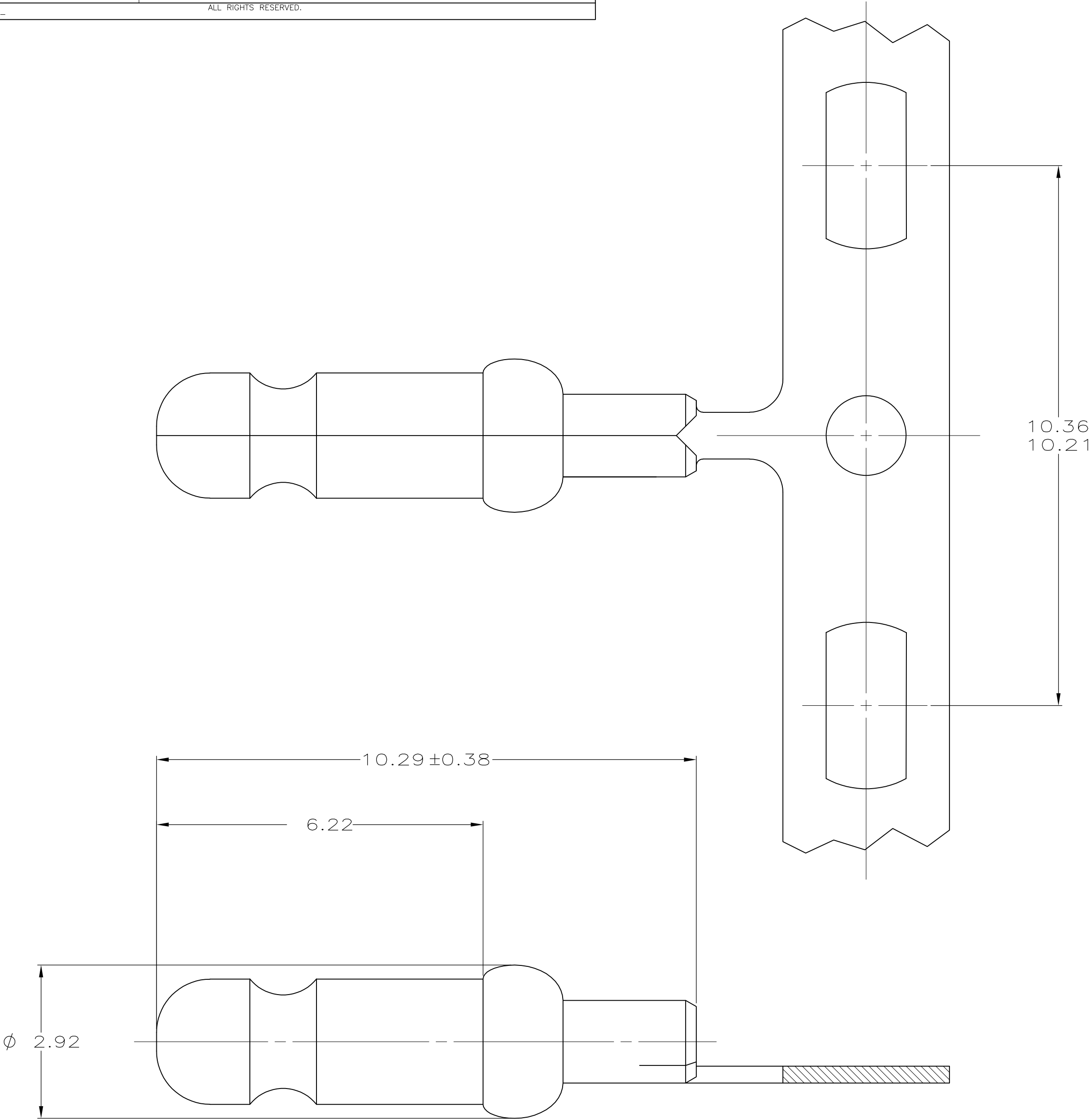
Email & Skype: [info@chipsmall.com](mailto:info@chipsmall.com) Web: [www.chipsmall.com](http://www.chipsmall.com)

Address: A1208, Overseas Decoration Building, #122 Zhenhua RD., Futian, Shenzhen, China



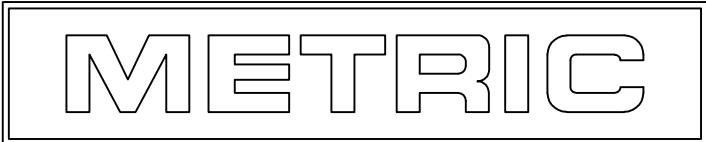
LOC	DIST	REVISIONS				
CM	52	P	LTR	DESCRIPTION	DATE	DWN
			M1	REVISED PER ECO-11-004820	11MAR11	RK
						APVD
						HMR

1. FITS 1.70 – 1.85 DIAMETER HOLE IN A 1.57 PRINTED CIRCUIT BOARD.
2. PARTS TO COMPLY WITH AMP SOLDERABILITY SPECIFICATION 109-11-1.



1.57	.062	2.36	.093	6.22	.245	—	—
0.38	.015	2.34	.092	3.18	.125	10.36	.408
0.32	.013	1.85	.073	2.92	.115	10.29	.405
0.13	.005	1.70	.067	2.44	.096	10.21	.402
MM	IN	MM	IN	MM	IN	MM	IN

CONVERSION TABLE



THIS DRAWING IS A CONTROLLED DOCUMENT.

DIMENSIONS:  
mm

MATERIAL  
0.32 PH BRZ

PRE TIN

DWN  
T. BECK  
8-27-97

CHK  
R. SWING  
8-27-97

APVD  
A. BEDDICK  
9-10-97

TOLERANCES UNLESS OTHERWISE SPECIFIED:

0 PLC ± -  
1 PLC ± -  
2 PLC ± 0.13  
3 PLC ± -  
4 PLC ± -  
ANGLES ± -  
FINISH

PRE TIN

PRODUCT SPEC  
108-1025

APPLICATION SPEC  
114-1008

WEIGHT  
—

CUSTOMER DRAWING

NAME  
PIN, .093 DIAMETER,  
PHOSPHER BRONZE, CLINCH FIT,  
LOOSE PIECE, P.C. CONTACT

SIZE  
A2

CAGE CODE  
00779

DRAWING NO  
C-61137

RESTRICTED TO  
—

SCALE  
15:1

SHEET  
1 OF 1

REV  
M1

TE Connectivity

61137-1  
PART NUMBER